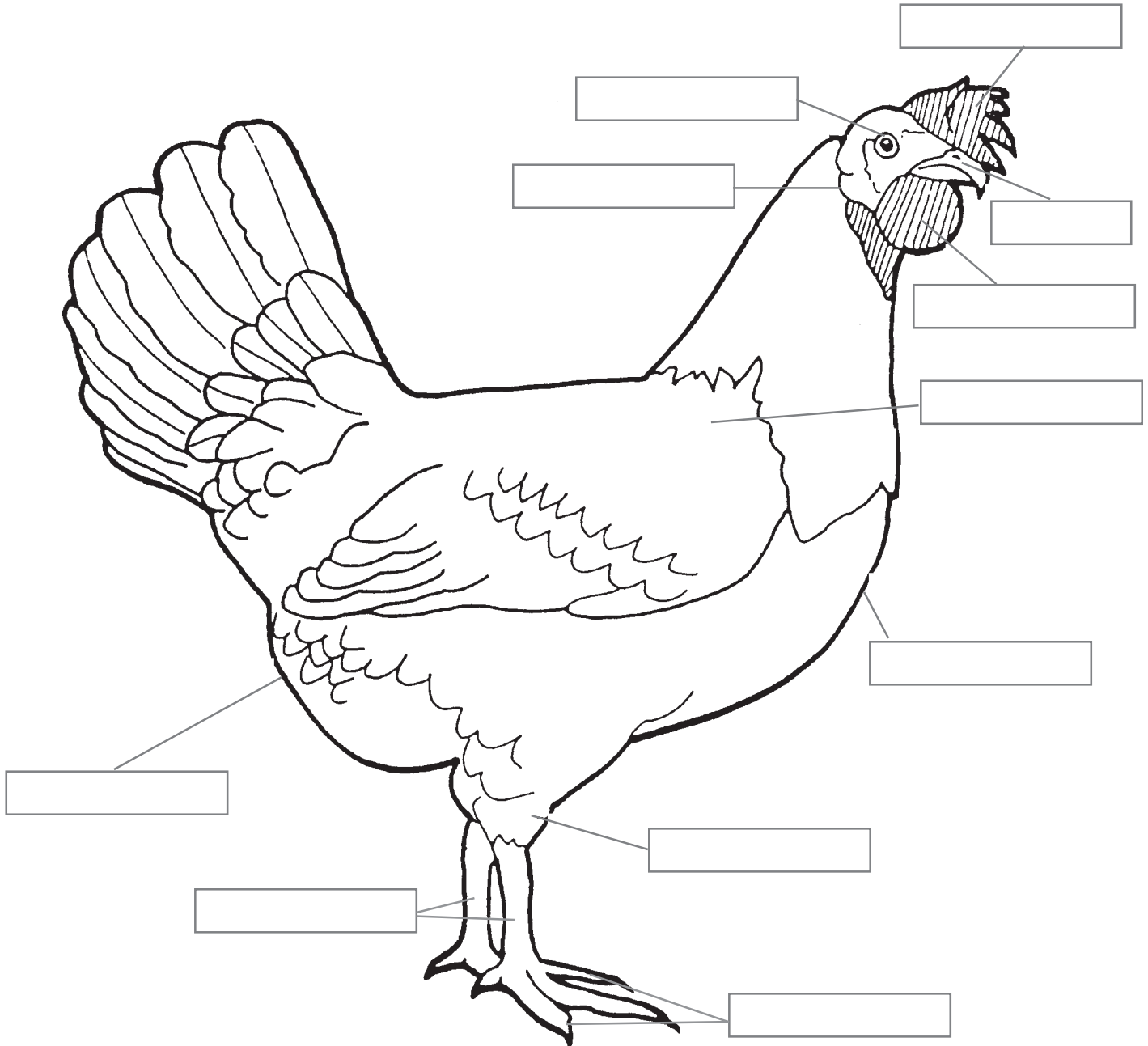


# Parts of a Chicken

Color and label the parts of a chicken.



Use each word only once:

beak  
eye  
toes

breast  
hock  
vent

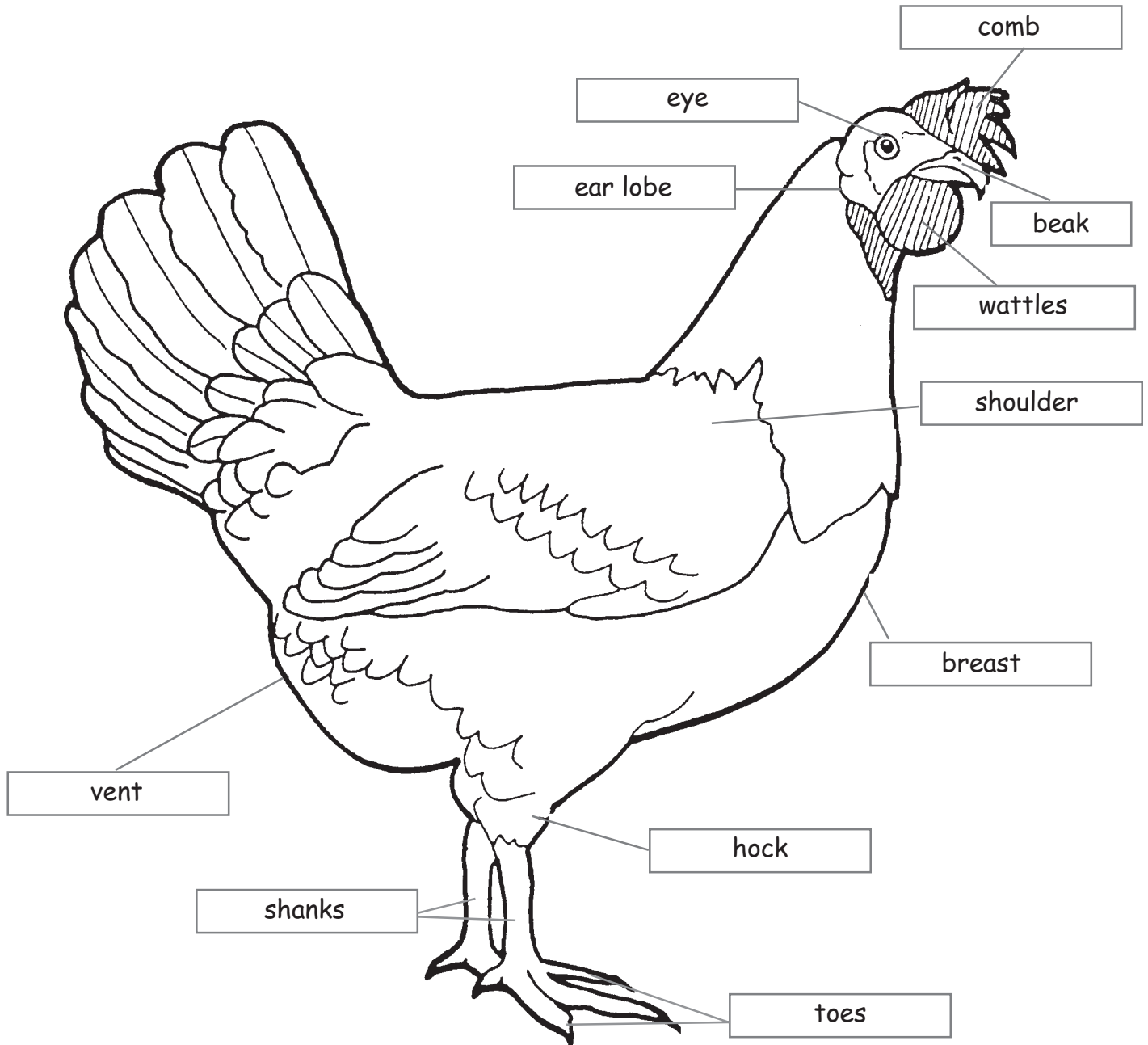
comb  
shanks  
wattles

ear lobe  
shoulder

KEY

# Parts of a Chicken

Color and label the parts of a chicken.



Use each word only once:

beak  
eye  
toes

breast  
hock  
vent

comb  
shanks  
wattles

ear lobe  
shoulder