

# The Quarterly Update

Edwards, Lawrence, Richland, Wabash & Wayne Counties

July 2022  
Volume 2 - Issue 2

## COUNTY DIRECTOR UPDATE

Summer is here and wow, have things been busy in our 5 County Unit! Between finally having a full staffed Unit and COVID restrictions being lifted, I'm finally starting to see what a normal year in Extension should be like, now that I have been in this roll over two years.

In the 4-H program area we have had several workshops and educational opportunities, community service events, and our summer show season has begun. I've watched kids learning about a variety of things including: conservation, gardening, cooking, farm safety, health, and the list goes on. Our shows have started and some of my favorite moments have been watching new 4-H members go through their conference judging for the first time.

In SNAP-Education we have been busy providing information booths and were able to get back into some schools for direct education. As I type this we are concluding our two weeks of Illinois Junior Chef Cooking School and it has been a fun learning opportunity for the kids who participated.

Finally, our Master Gardener program is growing! We currently have 2 full Master Gardeners, 5 Interns, and 3 in training.

I hope you enjoy this latest issue of the Quarterly Update that highlights just a few of the great things the staff in this Unit have been doing the last three months.

Thank you for your continued support of Illinois Extension.



Tara Buerster

County Director  
buerste2@illinois.edu

## CONNECT WITH US!



Email us at: [uie-elrww@illinois.edu](mailto:uie-elrww@illinois.edu)



Edwards: 618-445-2934  
Lawrence: 618-943-5018  
Richland: 618-395-2191  
Wabash: 618-262-5725  
Wayne: 618-842-3702



Find us on Facebook

University of Illinois Extension  
Edwards, Lawrence, Richland, Wabash,  
and Wayne Counties

\*Edwards County 4-H  
\*4-H Lawrence County Illinois  
\*Richland County Illinois 4-H  
\*4-H Wabash County, Illinois  
\*University of Illinois Extension -  
Wayne County 4-H



Illinois Extension  
UNIVERSITY OF ILLINOIS URBANA-CHAMPAIGN





## Wayne County Conservation Days

April 25th and 26th Wayne County 4-H hosted Conservation Days at Sam Dale Lake State Park.

This event is held each spring for the 6th graders in Wayne County schools. Kids rotated through several stations. Yvette Anderson, Wayne County 4-H Coordinator, planned a fun-filled day for the kids to learn more about conservation.



## Edwards County Green Trees Program

The Edwards County K-12 is now home to an Oak Tree Savanna thanks to local 4-H Youth and Community Members. The group of 25 oak trees, called a savanna, will bring new life to oak-hickory forests currently under threat in Illinois. The 4-H Green Tree Program focuses on tackling global issues at a local level. Fourteen youth took part in the planting along with Extension employees, Extension Master Gardeners, Extension Master Naturalists, and members from Edwards County Soil & Water Conservation District.







## 4-H State Award/Scholarship Winners

On Saturday, April 9th two of our Unit 4-H members were honored at the Illinois 4-H Awards Program at the I-Hotel in Champaign, IL. Lauren Luker of Edwards County and Victoria Zwilling of Richland County were both recipients of State 4-H Awards. Each winner receives a \$1,000 scholarship.

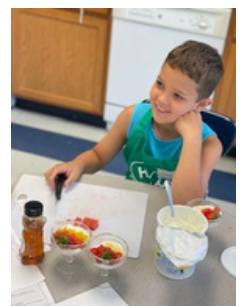
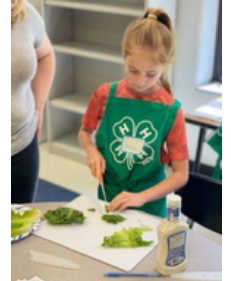
Lauren Luker was an award winner for STEM & Robotics. Victoria Zwilling was an award winner for Healthy Living & Nutrition. Along with their families, County Director Tara Buerster and 4-H Youth and Development Educator, Samantha Gaither attended the event to support Lauren and Victoria. We are very proud of these young ladies and can't wait to see what they do in the future!



L to R: Tara Buerster, County Director; Lauren Luker, Edwards County 4-H; Victoria Zwilling, Richland County 4-H; Samantha Gaither, 4-H & Youth Development Educator.

## Lawrence County - Chopped Summer Camp

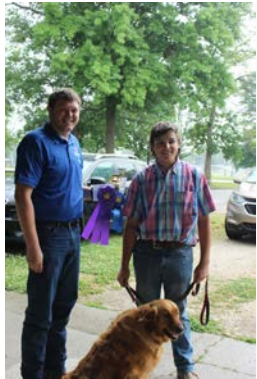
Chopped Summer Camp edition was held at the Bridgeport Jr/Sr School's Home Economics classroom. We had three teams of 3-4 kids that competed for five days straight. At the beginning of each day the teen teachers taught the kids competing new skills and nutrition lessons such as: knife safety, proper pan preparation skills, how to clean your food properly, types of vitamins we get from different kinds of food, proper heating temperatures, and many more. The kids were given a pantry full of ingredients they were allowed to use all five days. Each day we introduced new ingredients they were allowed to use specific to the dish they were making that day. The team presented their dish to the judges and explained what they made and how they made it. The judges scored them on a variety of things such as presentation, teamwork, taste and how clean their kitchen was at the end. The judges picked a winning team at the end of each day and they were awarded a small prize such as a cutting board, measuring spoons, and spatulas. On the final day we awarded each team with a certificate that we thought they deserved. Best teamwork, most unique dish, and most flavorful dish. The winning team on the final day was awarded a set of three mixing bowls. This was a huge success and all the kids told us they all wanted to participate again, and parents said how much they loved the experience and learned a lot. We appreciate Lawrence County Farm Bureau partnering with us on this event!







## Richland County Dog and Cat Shows



4-H Show season is starting in our area and on Friday, June 10th Richland County held their Dog Show in the morning at the Olney City Park and Cat Show in the afternoon at the Richland County Extension Office.

In the Dog Show, Gavin Williams and his dog, Molly won Grand Champion in Dog Obedience and Showmanship. Rusty Workman and Cooler won Reserve Champion. Trophies were presented by Richland County 4-H Program Coordinator, Ryan Littlejohn.



In the Cat Show Rachel Shilling won Grand Champion Cat. Reserve Grand Champion Cat was shown by Kaydn Cooley.



## Wabash County 2nd Annual Cloverbud Camp

On June 14th Wabash County 4-H held their 2nd Annual Cloverbud Camp. 4-H Coordinator, Megan Pierson, planned a fun day full of team-building activities, science experiments, crafts and lunch. Sixteen children ages 4 to 8 years were in attendance and spent the day together getting to know each other and building friendships. We are very excited to watch these kids grow in the 4-H program and look forward to many more memories they will make together!







## 4-H Members Providing Community Service

This past quarter several 4-H members and leaders have been providing service to their communities. A few examples include Edwards and Wabash County 4-H members planting flowers and helping prepare their county fairgrounds for fair season. Richland County 4-H members and leaders helped clean up the landscaping of the Extension Office and participated in the Rotary Club's clean up day around the community. Wayne County 4-H members helped with the Cisne Fire Departments Sausage and Pancake breakfast by cleaning tables.



## LOOKING AHEAD...

- July 5 - Lab Chefs - Richland County
- July 7-15 - Wayne County 4-H Shows and Wayne County Fair
- July 12 - General Show - Edwards County
- July 15-22 - Wabash County 4-H Shows and Wabash County Jr. Fair
- July 19 - Dog Show - Edwards County
- July 20-30 - Edwards County 4-H Shows and Edwards County Fair
- July 22-30 - Richland County 4-H Shows and Richland County Fair
- July 23 - General Projects Shows - Lawrence County
- July 29 - Horse Show - Lawrence County
- July 30 - August 5 - Lawrence County 4-H Shows and Lawrence County Fair
- August 12 - Day at State Fair for 4-H Members and Hall of Fame Induction for those from Edwards, Lawrence, Richland, Wabash, and Wayne Counties
- September 1 - Start of new 4-H year!



- July 9-16 - Wayne County Fair
- July 16 - 22 - Wabash County Fair
- July 20 - 30 - Edwards County Fair
- July 22 - 30 - Richland County Fair
- July 30 - August 5 - Lawrence County Fair





## Illinois Junior Chef's Cooking School

The last two weeks of June SNAP-Ed Community Workers Carol VanMatre, Kirby Hunt, and Jane Jones put on Illinois Junior Chef Cooking Schools in Allendale, IL. The kids learned about the 5 food groups, various cooking techniques and made several recipes during the week. Kids were grouped into teams to cook together. At the end of the week students invited their family members for a taste test party. Families were able to taste the different recipes made during the week by the children in the cooking school. Children participating not only learned about healthy cooking and eating but also left the cooking school with a cookbook full of healthy recipes and various cooking utensils. A great time was had by the kids, Extension staff and volunteers. Several kids stated they wanted to come back next year!





## SNAP-Ed Staff Providing Nutrition Education in our Communities

Becoming fully staffed again in SNAP-Ed and COVID restrictions lifting, SNAP-Education staff have been busy getting back in the communities, face-to-face, providing "Eat. Move. Save." booths and direct education in classroom settings. We recently assisted the Unit to the south of us and sent two of our Community Workers to do Organ Wise Guys classes in White County.



## Canner Lid Testing

Again this summer our Unit will provide Canner Lid Testing for pressure canners with dial gauges. The Edwards and Wayne County Offices will be available to test canner lids all summer.

To date we have tested 20 pressure canner lids this summer. This is a free service we provide to our communities.

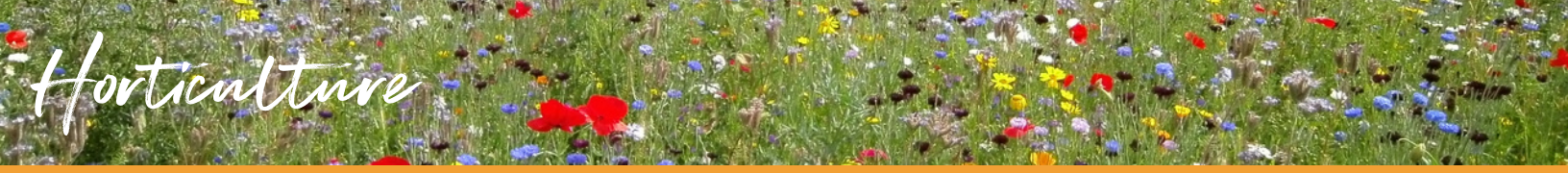


## Canning Workshop

Illinois Extension, Nutrition and Wellness Educator, Mary Liz Wright, came to Richland County on June 22nd to lead a basic canning workshop. Participants learned basic food preservation; received the latest, up-to-date home food safety guidelines; and learned the latest scientific methods for preserving food safely. Individuals from Richland and Edwards counties were in attendance and left with a lot of useful information about canning.







## Master Gardener Interns Seed Planting Booth at Richland County Elementary Pre-K Open House

Richland County Master Gardener Interns Sam and Elliot Brazil and Wayne County Master Gardener Intern Karley Dagg participated in the Richland County Elementary Pre-K Open House on April 6th and taught children about planting seeds and the parts of a plant.



## Flower Container Gardening Workshop in Edwards County

On Saturday, May 7th, the Edwards County Master Gardeners hosted their first workshop, Flower Container Gardening. Fourteen individuals attended and learned about choosing plants and planters, planting basics, plant maintenance, and tool maintenance. Participants left with a planted flower container garden.

The workshop was put on by Master Gardeners Debbie Fearn and Darla Bradham, and Master Gardener Intern Ashley Spray. Extension staff member Dana Hart also assisted.



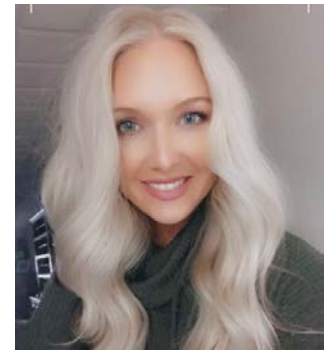


## Maisie McClure joins Illinois Extension as 4-H Coordinator for Lawrence County

Maisie McClure is the new 4-H Program Coordinator for Lawrence County. She has a bachelor's degree in Animal Science from Western Illinois University. McClure comes from an extensive background in agriculture, specifically the livestock industry. She grew up showing pigs and cattle at the county, state, and national level. She was a member of 4-H her entire show career and enjoyed showing both livestock and general projects.

McClure resides in Billett, IL with her husband Eric where they own and operate Four Corners Farms - an operation that raises and markets elite show heifers across the country. Maisie's hobbies include owning and operating her online clothing boutique, baking, and spending as much time as possible with friends and family.

Maisie is extremely excited to work with the youth in the community and hopes to bring a fresh perspective and new programs for the youth to participate in.



## Ryan Littlejohn is new 4-H Coordinator for Richland County



Ryan Littlejohn is the new 4-H Program Coordinator for Richland County. He is a 3rd generation 4-H member, and a Kansas 4-H Alumni. He has an extensive background in agriculture and working with volunteers. Born and raised in Kansas, Ryan was an active member of Harvey County 4-H in Large Animal Livestock, General Projects, and leadership. He was involved in programs and held roles at the local and state level of 4-H. Ryan has served as a Project Leader, Superintendent, Fair Board member, and Livestock Judging Team Coach.

Ryan lives in Olney, IL with his fiancée Hallie who is a native of Wayne County, IL. Together they help run Anderson Farms with Hallie's family. Ryan and Hallie met at Kansas State University while studying animal science and have both been heavily involved in Kansas and Illinois 4-H.

Ryan is ecstatic to be working with the youth and volunteers in Richland County and hopes to bring new ideas and programming to the county.





## Edwards-Lawrence-Richland-Wabash-Wayne-Counties

### County Director



**Tara Buerster**  
County Director  
Unit 25

### Office Support



**Theresa Reid**  
Office Support Associate  
(Fiscal) Edwards County



**Debbie Buchanan**  
Office Support Assistant  
Lawrence County



**Dana Hart**  
Office Support Assistant  
Wabash / Edwards County



**Sheri Pitts**  
Office Support Assistant  
Richland County



**Jessica Simpson**  
Office Support Assistant  
Wayne County

### 4-H Youth Development



**Sam Gaither**  
4-H Youth Development  
Educator



**Yvette Anderson**  
4-H Youth Development  
Program Coordinator-Wayne



**Debra Collier**  
4-H Youth Development  
Program Coordinator-Edwards



**Maisie McClure**  
4-H Youth Development  
Program Coordinator-Lawrence



**Ryan Littlejohn**  
4-H Youth Development  
Program Coordinator-Richland



**Megan Pierson**  
4-H Youth Development  
Program Coordinator-Wabash

### SNAP-Ed



**Kirby Hunt**  
SNAP-Ed Community Worker  
Richland County



**Jane Jones**  
SNAP-Ed Community Worker  
Wayne/Edwards Counties



**Carol VanMatre**  
SNAP-Ed Community Worker  
Wabash/Lawrence Counties

**Edwards County**  
350 North Seventh St.  
Albion, IL. 62806  
(618)-445-2934

**Lawrence County**  
10722 Cherry Blvd.  
Lawrenceville, IL. 62439  
(618)-943-5018

**Richland County**  
306 South Fair St.  
Olney, IL. 62450  
(618)395-2191

**Wabash County**  
738 North Market St.  
Mt. Carmel, IL. 62863  
(618)262-5725

**Wayne County**  
#2B Frontier Dr.  
Fairfield, IL. 62837  
(618)842-3702