

# 2025 OGLE COUNTY FARM STROLL PARTICIPATING FARMS



## BerryView Orchard

7504 W Midtown Rd, Mt Morris, IL 61054  
Jeff and Julie Warren are growing the superfruit, Aronia Berries, using organic practices. Taste aronia berries, learn about the benefits, and find ways to add them to your cooking, baking, and juicing. Pick your own berries and apples, or purchase pre-picked. Sample jams, jellies and cookies. Walk the orchards and see what's growing.

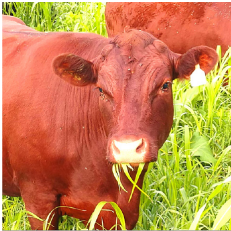
## Hough's Maple Lane Farm

3788 N Mt Morris Rd, Mt Morris, IL 61054  
The Hough family collects maple sap in the spring and boils it down into maple goodness in their Sugar House. Each year, up to 50 gallons of pure maple syrup is made and sold, including smoked and bourbon maple syrup. Other maple treats are also created including candy, pecans, cinnamon rolls, applesauce, cookies, and pickles.



## Dietrich Ranch

4575 N Leaf River Rd, Mt Morris, IL 61054  
Animals at Dietrich Ranch are 100% grass-fed using intensive rotational grazing and holistic management. They raise 100% Grass-Fed / Grass Finished Beef, Lamb, Free Range Pastured Chicken & Pork. All of the products the farm offers are raised without use of chemicals, antibiotics, or hormones.



## Barnhart's Stone Corner

2169 E Honey Creek Rd, Oregon, IL 61061  
John and Cindy Barnhart collect and display antique farm equipment and a miscellany of historical oddities. In addition, they maintain a unique collection of stones - hundreds of tons of them - many marked with dates and point of origin, all arranged in stone fences and sculptures on their property.



## Jen's Sunshine Farm

1774 S Columbian Rd, Oregon, IL 61061  
Jen and Scott Immel and their two children, Wesley and Bryan, care for the soil at their farm with cover crops like hairy vetch and tillage radishes. They grow seasonal favorites including sweet corn, birdhouse gourds, and pumpkins. Homemade cookies, coiled fabric baskets, and memory bears are Jen's specialties.



## Hinrichs Farm

1675 S Columbian Rd, Oregon, IL 61061  
Home of AJ's Garden Tractor Jamboree. Join us for interactive events such as Corn Shelling, Corn Grinding, and Rope Making. See hit & miss engines, John Deere 2-cylinder tractors, vintage garden tractors, huge tool collection, and other iron collectibles on display in four buildings. Stop by for free popcorn!

## Happily Homegrown

4938 S Scout Rd, Oregon, IL 61061  
The Bruns family lives on a 12-acre homestead where they grow and raise most of their food. This includes pigs, cows, rabbits, chickens, and all kinds of fruits and vegetables. How do they get through the winter? A greenhouse, of course!



## Triple Creek Bison

1236 N Blind Rd, Chana, IL 61015  
Jim Rogers runs a zero-emissions eco agricultural facility. This is a holistic approach to farming that aims to minimize environmental impact. Regenerative and sustainable practices rooted in a native habitat. A variety of fruit, honey, and bison products coming soon.

## Ponto Ranch

1188 N Blind Rd, Chana, IL 61015  
Tim and Dede Ponto live on a 15-acre homestead where they raise registered Nigerian Dwarf dairy goats and grow Christmas trees for their up-and-coming, "Choose and Cut Christmas Tree Farm". Their goats are raised for pets, milk production, and breed improvement with an emphasis on competitive showing.



## Orion Organics

885 W Stone Barn Rd, Franklin Grove, IL 61031  
Tim Benedict's apiary and garlic farm is surrounded by thousands of acres of native prairie and woodlands. He adheres to strict organic farming methods to produce artisan raw honey from the native prairie wildflowers among the Nachusa Grasslands.

## John Deere Historic Site

8334 S Clinton St, Grand Detour Dixon, IL 61021  
**Join their Fall Fest Oct 11-12.** Blacksmith demos, wagon rides, petting zoo, and kid-friendly activities.

**ALSO VISIT:**





# THANK YOU FOR SUPPORTING THE OGLE COUNTY FARM STROLL!



If you have questions, or if you need a reasonable accommodation to participate in this event, please contact the Ogle County Extension office, 815-732-2191.



## OGLE COUNTY FARM STROLL

**Sunday, October 12, 2025, 11 am–4 pm**

**Welcome to the Farm Stroll**, a self-guided tour of Ogle County's diversified family farms. There is no beginning or end, just choose which farms to see and hit the road! Rain or shine, come out to satisfy your local food cravings and curiosity about the farms that grow your food.

- The Farm Stroll is free, but bring cash for farm products when available.
- Dress for a farm visit in all-weather clothing and close-toed shoes.
- Pick up a "passport" at your first stop, fill in the farms you visit, then turn it in at your last stop for a chance to win prizes!
- Get info and share your pictures at [facebook.com/northernfarmstroll](https://facebook.com/northernfarmstroll).

### For your safety:

- Drive carefully on rural roads
- Follow farmers' instructions
- Wash your hands regularly
- Keep children under control
- PLEASE, NO PETS!

### COLLEGE OF AGRICULTURAL, CONSUMER & ENVIRONMENTAL SCIENCES

University of Illinois | U.S. Department of Agriculture | Local Extension Councils Cooperating  
University of Illinois Extension provides equal opportunities in programs and employment.