

# Illinois Extension

## **I** Boone County FARM STROLL

Sunday, October 5, 2025, 10am-5pm

**Welcome to the Farm Stroll**, a self-guided tour of Boone County's diversified family farms. There's no beginning or end, just choose which farms to see and hit the road. Satisfy your local food cravings and curiosities on farms that grow your food!

- The Stroll is free, but bring cash for food and activities at the farms.
- Dress for a farm visit in all-weather clothes and closed-toe shoes.
- Turn in a completed **Farm Stroll Passport** for a chance to win prizes!
- Get info and share your pictures at [facebook.com/northernfarmstroll](https://facebook.com/northernfarmstroll).

### For your safety:

- Drive carefully on rural roads
- Follow farmers' instructions
- Wash your hands regularly
- Keep children under control
- PLEASE NO PETS!



## I 2025 Boone County FARM STROLL



### Alpaca Pines Farm and Fiber Mill

21756 Beaverton Road, Poplar Grove, IL 61065

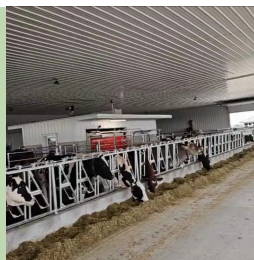
Alpaca Pines is home to both suri and huacaya alpacas, plus a llama. The mill processes a variety of fibers into yarn, socks, sweaters and other alpaca and wool items. Stop by the farm with the family to interact with the animals, tour the mill, enter a coloring contest, drawings and see demos of hand spinning. A variety of alpaca products available for sale.



### DieHard Dairy

4915 Genoa Road, Belvidere, IL 61008

Our dairy farm is home to 120 cows. We have just installed two Lely robotic milking units. The cows have free access to milk 24-hours a day on their own with the robots. Farm tours will be offered at 11:00 a.m., 1:00 and 3:00 p.m.



DieHard Dairy is home to T-J's Farm Market...

Stop by **T-J's Farm Market (4915 Genoa Rd)** where we offer a variety of seasonal produce. Our biggest offering is our Homegrown Sweet Corn. You'll also find fall goodies including Amish grown mums, a u-pick pumpkin patch, fall decor and of course pumpkins of all shapes, sizes and colors. (No passport sticker given)



### Illinois Wool and Fiber Mill

10828 Caledonia Road, Belvidere, IL 61008

Visit Illinois' first full-service fiber mill. Learn how wool and other fibers are made into yarn for knitting. Demonstrations all day. Make a needle felted small pumpkin decoration for Halloween. Visit the sheep and shop for warm wool mittens, boots and slippers at the Complete Sheep Shoppe.



### Nature's Best Christmas Trees and Honey

13001 Illinois Route 76, Poplar Grove, IL 61065

Nature's Best Trees (and Bees!) is a small family Christmas tree farm and apiary (known as a bee yard) where we have been selling cut-your-own Christmas trees for more than 30 years. We also tend to dozens of productive beehives and sell our 100% raw, natural honey through a self-serve honey barn. Nature's Best is one of the few beekeeping operations to offer honeycomb which becomes available beginning in July and August until it sells out in mid- to late Fall.



Beekeepers will discuss the importance of honeybees as pollinators, bee life cycles, beekeeping processes and honey production, and many honeybee-related topics throughout the day of the Farm Stroll. Please drive slowly down our half-mile long drive as it is narrow! A roadside sign on Route 76 located directly across from Dawson Lake Road will guide the attendees to the honey barn. Please note that there is no direct access to our farm through the Countryside/Pacemaker Mall.



Public Restroom



Food Nearby



Farm Fresh produce for sale

## Enjoy your time on the farm!

### Paulson's Ag Museum of Argyle

6950 Belvidere Road, Caledonia, IL 61011

Welcome to PAMA! The home of the largest and best collection of farm equipment and antiques of yesteryear! Warren and Helen Paulson began this amazing collection that has grown into a museum. The museum displays local, regional, national and worldwide artifacts. Here you will find a large display of farm toys, cast iron implement seats, gas engines, antique tractors and more. Tours of the museum take about two hours. We recommend arriving before 3 p.m. so you have a chance to see everything. Board members will be available to answer questions about the collection. A free will donation to help support operations of the museum is appreciated.



### S & J Farm Kirkland LLC

1745 Cherry Valley Rd. Kirkland, IL 60146

Come by and visit our always expanding regenerative farm! The cattle are out on pasture but you can see our chickens, ducks, turkeys and our amazing horse, Tornado. You may also take a tour of the greenhouse (the never ending work in progress). Grab some eggs and fresh veggies. We use natural fertilizer that we course right from the farm.



S&J FARM KIRKLAND LLC



### Susie's Garden Patch

10258 US Highway 20, Garden Prairie, IL 61038

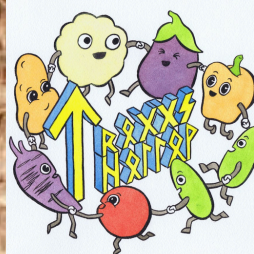
Susie's Garden Patch is a second-generation family-owned farm that has been operating since 1985. Growing lots of amazing vegetables, picked at the peak of ripeness, and extending the growing seasons with high tunnels. Stop by for a tour, check out our market store, and pick up some fresh produce, pies, pumpkins and more.



### Trogg's Hollow CSA and Market Farm

11577 Poplar Grove Road, Poplar Grove, IL 61065

Chemical-free, regenerative agriculture, local microfarm. Growing produce you would normally get on your trip to the grocery store, year-round through CSA, farmers markets and an on-farm stand. Wagon rides and farm tours at 1:00, 2:00, 3:00 and 4:00pm. Don't forget to say hi to the furry and feathered friends!



Fresh

### NEW...Winding Path Farms is with Branching Out, Inc.

6538 IL 173 Poplar Grove, IL 61065

It's all about Ewe, Yew, You! Our days revolve around sheep, plants, and people. Our Dorper Sheep will be visiting us at Branching Out, Inc. so you should too. Come learn about the history of this amazing breed of South African hair-sheep and their contributions to the world of agriculture. Then walk through our plant nursery where you will see both common and unusual varieties of trees and shrubs.

Take time to relax in our "Secret Garden" while the kids play in our activity area. The garden center will be open for plant, statue, and gift purchases. Come out and support the Manchester Maverick's 4-H club who will have refreshments for purchase.



Illinois Extension  
UNIVERSITY OF ILLINOIS URBANA-CHAMPAIGN

University of Illinois College of ACES / USDA / Local Extension Councils Cooperating  
University of Illinois Extension provides equal opportunities in programs and employment.