

MADISON COUNTY 4-H FAMILY JUNE 2026 NEWS



Hello 4-H Families and Friends,



We are getting excited for all the upcoming 4-H shows!

FairEntry registration is now closed. If any youth decide they no longer want to show a project they signed up for, please let us know as soon as possible so we can maintain accurate numbers and secure the appropriate number of judges.

Throughout this newsletter, you will find information on upcoming workshops and events we will be offering. Please take a look and be sure to register for anything that interests you!

I, Meghan Cope, would like to inform all 4-H members, families, and supporters that I will begin maternity leave in mid-June. I expect to be out for approximately 12 to 14 weeks. During my absence, please direct any questions to our unit email at uie-mms@illinois.edu.

Our summer Extra Help staff member and intern have started working with us! You may begin seeing emails from Erin Nemsky as I transition into maternity leave. At our upcoming workshops and shows, you will also see Alyssa Elliott, Savannah Hellon, and Kylie Ketcham assisting with programs and events. We are very excited to have them on board and helping make this summer a huge success for our 4-H program!

Have a great 4-H show season! I cannot wait to hear all about the amazing projects and experiences when I return from maternity leave.

Thank you,
Meghan Cope
4-H Educator serving Madison and St. Clair Counties;
mawolff@illinois.edu

TABLE OF CONTENTS

Page 1-27: County information
Page 28: Calendar of events

Office Hours:

Monday- Friday: 8:00 a.m. – 4:30 p.m.
Closed Noon to 1:00 p.m. for lunch

Madison-St. Clair County Branch Office

900 Hillsboro Ave.
Edwardsville, IL 62025
618-344-4230, 618-344-5602 Fax

Monroe County Office

901 Illinois Ave., PO Box 117
Waterloo, IL 62298
618-939-3434, 618-939-7708 Fax

University of IL Extension at the JJK FAN Innovation Center

2051 Lynch Ave
East St. Louis, IL 62204
618-875-8939, 618-875-8786 Fax



Extension County Director

William Catalano

4-H Youth Educator

Meghan Cope

Office Manager

Nicole Hellon

Office Support Assistant

Emily Wolff

Visit our website:

extension.illinois.edu/mms

Like us on Facebook:

Madison County 4-H

University of Illinois Extension-
Madison, Monroe and St. Clair Unit

2026 Madison County 4-H Showbook

The 4-H Showbook is ready to view, including show dates and project guidelines:

go.illinois.edu/2026MadisonCounty4-HShowbook

*Hard copies of the showbook have been given to your club leader.

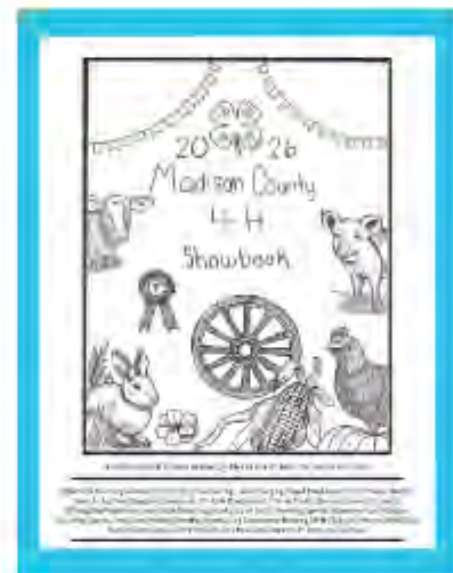
Madison County 4-H



4-H 2026 Showbook Available

The Madison County 4-H Showbook contains all the information you need for showing a project at the 4-H shows.

- The show schedule can be found at the front of the showbook.
- Some projects may require a publication—please review your project requirements carefully.
- Be aware that some project requirements may have changed from previous years.
- Superintendent contact information is located in the back of the showbook under each livestock category.



Contact your club leader or view online at:
go.illinois.edu/2026MadisonCounty4-HShowbook

Illinois Extension



LOOKING FOR DONATIONS FOR THE ANNUAL BASKET FUNDRAISER

We are asking individuals, groups of individuals or clubs to donate a basket to help raise these funds for our Extension Programs.

Please email Megan Martinson if you will be donating a basket
megan.biggs@yahoo.com

**DEADLINE TO DONATE IS
Monday, July 20th at noon**





If a youth is no longer participating in a project that they signed up in on **Fair Entry** after June 1, they need to contact 4-H Staff (vie-mms@mx.uillinois.edu) as **soon as possible**.

This is necessary for accurate counts in each project category to accommodate youth appropriately.

Thank you





Amelia Reding attended the Speak for Illinois event in mid-April, representing Madison County. She had the opportunity to speak with legislators and advocate for Illinois 4-H, sharing the program's impact and importance with leaders from across the state.

"I was put into a group with other 4-H'ers where we were tasked with the job of calling our group's representatives and legislators to schedule a meeting with them either that day or the next day. We were then lucky enough to meet with the legislator who helped pass the 4-H absence law and his assistant throughout the days we had meetings. The next day, my group and I were able to go onto the floor, and the 4-H organization was recognized later that day as well. Throughout all of this, not only did I bond with my group members, but the kids at the hotel also bonded. We did this by having a game night and playing cards on Wednesday after a group supper, where everyone talked and joked. In total, the event was an amazing event to help learn how to self-network, set up meetings, and have those meetings, all while learning and figuring out how to deal with a new situation and how to make strong friendships fast with peers that value the same thing, 4-H."

We are proud to see our local youth representing our community so well!



2026 4-H General Project Show Club Schedule

Project drop and judging are during your club's timeslot.

Big projects that need to come early, please notify 4-H Staff ahead of time by emailing uie-mms@illinois.edu. If you need accommodations, please email us at uie-mms@illinois.edu.

Cloverbud times are set for the same time as their regular club (unless otherwise noted).

Drop-Off & Judging Time	Clubs
5:30 pm	4-H Members who are Superintendents
6:00 pm	Willoughby Wanderers, Good Producers, Fosterburg Ag
6:25 pm	Pin Oak Progressors, Marine Stars Jr. Ag, Quercus Grove
6:45 pm	St. Jacob, Brier Bank, Grant Prairie, New Douglas Cloverbuds,
7:15 pm	Alhambra Morning Glories, Prairie Youth, Cloverleaf Ag.

Please do NOT come 10 or 15 minutes early.

When you arrive, your club will have a table labeled where you will check in with your leader this year. Your leader will give you your exhibit tag. Please tape the tag to your projects before entering the judging area.

Parents are **prohibited** from entering the judging area. 4-H Teens as Teachers and 4-H Staff will help assist 4-H members to the judging area with their projects.



4-H Club Watch Schedule for General Projects

Make sure to mark down when your club project watch is. Club leaders will have more information for you.

Club	Date	Time
Extension	Monday, July 20	3 pm-8 pm
Fosterburg Ag	Tuesday, July 21	11 am-2 pm
Alhambra Morning Glories	Tuesday, July 21	2 pm-5 pm
Marine Stars Jr. AG	Tuesday, July 21	5 pm-8 pm
Grant Prairie	Wednesday, July 22	11 am-2 pm
Grant Prairie	Wednesday, July 22	2 pm-5 pm
New Douglas Cloverbuds	Wednesday, July 22	5 pm-8 pm
Brier Bank	Thursday, July 23	11 am-2 pm
Good Producers	Thursday, July 23	2 pm-5 pm
Good Producers	Thursday, July 23	5 pm-8 pm
Pin Oak Progressors	Friday, July 24	11 am-2 pm
Quercus Grove	Friday, July 24	2 pm-5 pm
St. Jacob	Friday, July 24	5 pm-8 pm
Cloverleaf Ag	Saturday, July 25	11 am-2 pm
Prairie Youth	Saturday, July 25	2 pm-5 pm
Prairie Youth	Saturday, July 25	5 pm-8 pm
Willoughby Wanderers	Sunday, July 26	11 am – 1 pm



Explore. Discover. Honor. Grow.

ROCK QUEST 2026

A MADISON COUNTY OUTDOOR ADVENTURE

Choose Your Path. Create Your Story.

JUNE 1 – JUNE 30, 2026
ACROSS MADISON COUNTY, ILLINOIS

Grab your friends. Bring your family. Or hit the trails solo.
This year, Rock Quest returns bigger than ever with 4 unique ways to explore Madison County!

HONOR

DISCOVER

GROW

EXPLORE

ADVENTURE AWAITS

ROCK QUEST 2026

PATH 1

FREEDOM TRAIL

Honor those who served.

Visit veteran memorials throughout Madison County.

- ★ Complete a simple patriotic challenge
- ★ Upload a photo for proof
- ★ Earn points and raffle entries

PATH 2

ROCK QUEST

The rocks are back!

Visit Master Gardener and Master Naturalist-supported gardens, habitats, and nature preserves.

- ★ Find hidden painted rocks
- ★ Painted by Madison County 4-H youth
- ★ Earn points for every rock found

PATH 3

GARDENS, PARKS & PRESERVES

Explore Madison County's hidden gems.

- ★ Complete fun mini challenges
- ★ Take a selfie with your favorite bloom
- ★ Find a butterfly or bee
- ★ Capture your favorite view
- ★ Earn points and raffle entries

PATH 4

HIKES & BIKES

Need more adventure?

Explore scenic biking trails, hiking routes, and outdoor recreation areas throughout Madison County.

No points. No pressure. Just fresh air, movement, and adventure.

REGISTER TODAY!

Individual: **\$10**
Family: **\$20**
(Family registration includes 4 raffle entries!)

COMPLETE CHALLENGES. EARN POINTS. WIN PRIZES!

Share your journey on Facebook: @MCEEF

ROCK QUEST PASSPORT

Register online by scanning the QR code or visiting www.givebutter.com/MCEEF2026RockQuest

MADISON COUNTY
EXTENSION EDUCATION FOUNDATION

Proudly supporting 4-H, Master Gardeners, Master Naturalists, and other programs offered through the University of Illinois Extension

501c3 ORGANIZATION | EIN 37-1207789 | WWW.FACEBOOK.COM/MCEEF | WWW.LINKTR.EE/MCEEF





MADISON COUNTY YOUNG LEADERS
GOLF
 SCRAMBLE

Madison County Farm Bureau
YOUNG LEADERS

SATURDAY
JUNE 27

OAK BROOK GOLF COURSE
 9157 FRUIT RD, EDWARDSVILLE, IL 62025

18-Hole Golf Scramble

- \$100/player (Teams of 4)
Includes lunch + drink ticket, giveaways, and more.
- A & B Flight Payouts
- Shot Gun Start at 8 AM
- Sponsorship Opportunities Available

SIGN UP HERE!

TEAM SIGN UP

SPONSORSHIP SIGN UP

REGISTER BY JUNE 17






Scan a QR or call 618-656-5191 for more information.

Proceeds help fund ag philanthropy through Madison County Farm Bureau Young Leaders!



Sign up for one or four!

4-H Summer Wellness at the Park

Come join us for a fun and healthy outdoor series at Alhambra Park! Youth can enjoy fresh air, physical activity, and a delicious healthy snack while spending time with friends.



Alhambra Township Park
610 W Main St.
10 AM - 11 AM



Register at

June 8	go.illinois.edu/4-HWellnessDayJune8
June 22	go.illinois.edu/4-HWellnessDayJune22
June 29	go.illinois.edu/4-HWellnessDayJune29
July 6	go.illinois.edu/4-HWellnessDayJuly6

Open to youth ages 5- 18 years old! You do not have to be a 4-H member to attend.



Illinois Extension
UNIVERSITY OF ILLINOIS URBANA-CHAMPAIGN

College of Agricultural, Consumer and Environmental Sciences
University of Illinois, U.S. Department of Agriculture, and Local
Extension Councils Cooperating.
University of Illinois Extension provides equal opportunities in
programs and employment. If you need a reasonable accommodation
to attend contact the registration office at 618- 344-4230.



4-H NATURE WALK

Join the SIUE Master Gardeners and Naturalists for a guided nature walk around The Gardens!

**Meet at the gardening shed
(6 Arboretum Ln,
Edwardsville, IL 62025)**

**SCAN QR CODE TO
REGISTER BY JUNE 8**



Participants will explore a variety of habitats, including prairie, woodland, and pond areas, while learning about the unique ecosystems each one supports. Along the way, they'll highlight Illinois state symbols found throughout the gardens.

The walk will also cover topics such as pollination, basic tree identification, and even a look at how maple syrup is produced from the trees during the winter months.

Come ready to learn, explore, and enjoy the beauty of nature!



**June 11
9 AM - 10 AM**

Open to ages 5-18 years old (you do not have to be a 4-H member to sign up)

AT THE SIUE GARDENS



Illinois Extension
UNIVERSITY OF ILLINOIS URBANA-CHAMPAIGN

College of Agricultural, Consumer and Environmental Sciences
University of Illinois, U.S. Department of Agriculture, and Local Extension Councils Cooperating.
University of Illinois Extension provides equal opportunities in programs and employment. If you need a reasonable accommodation to attend contact the registration office at 618- 344-4230.



4-H Cloverbuds Gardening with Little Roots Kit

Madison County Farm Bureau

Join us for a fun, hands-on gardening experience designed especially for our youngest 4-H members! In this Cloverbuds program, youth will explore the basics of gardening and learn how plants grow from seed to harvest.

Thursday, June 11
1 pm - 3 pm

Only for 4-H
Cloverbuds ages
5-7 years old

No cost

20 limited spots

Each participant will receive their own **Little Roots Kit** to take home, which includes:

- A gardening calendar to track growth and activities
- A packet of seeds to plant and care for
- 1 live tomato plant
- 1 live pepper plant

Kids will get the chance to dig in, observe plant growth, and build responsibility while caring for their own mini garden at home.



SCAN QR CODE TO REGISTER BY JUNE 8



Illinois Extension

UNIVERSITY OF ILLINOIS URBANA-CHAMPAIGN

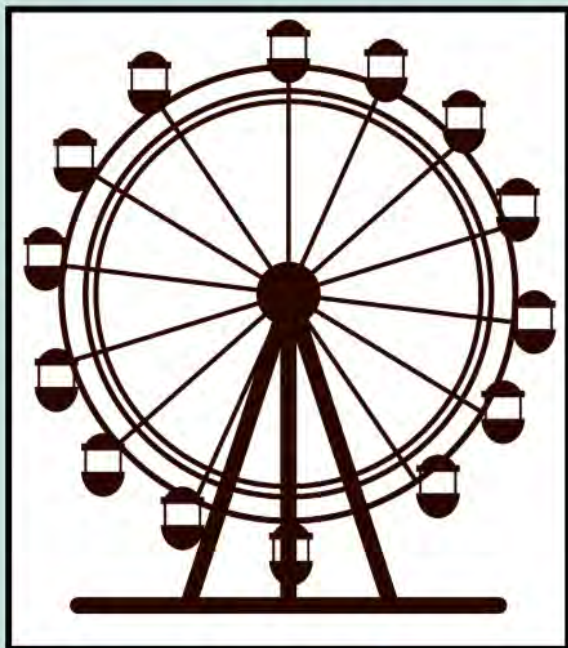
College of Agricultural, Consumer and Environmental Sciences
University of Illinois, U.S. Department of Agriculture, and Local
Extension Councils Cooperating.
University of Illinois Extension provides equal opportunities in
programs and employment. If you need a reasonable accommodation
to attend contact the registration office at 618- 344-4230.



Explore the Fairgrounds with 4-H



Open to Cloverbuds and 4-H members ages 5-18!



Join us for a guided tour of the **Madison County Fairgrounds** to help you feel prepared and confident for 4-H fair week! During the tour, you'll get a better understanding of where general show judging and exhibits will take place, as well as the locations of livestock barns and show rings.

At each stop, experienced 4-H members will be available to share helpful tips and walk you through what to expect from arrival and unloading to setting up and showing your project.

We Highly encourage first and second-year members to attend. We also encourage parents to stay and participate.

All 4-H youth ages **5-18** are welcome to attend!

SCAN QR CODE TO REGISTER BY JUNE 8



JUNE 24 | 5:30 PM - 7:00 PM
MADISON COUNTY FAIRGROUNDS
2025 PARK HILL DR, HIGHLAND, IL 62249



Illinois Extension
UNIVERSITY OF ILLINOIS URBANA-CHAMPAIGN

College of Agricultural, Consumer and Environmental Sciences
University of Illinois, U.S. Department of Agriculture, and Local
Extension Councils Cooperating.
University of Illinois Extension provides equal opportunities in
programs and employment. If you need a reasonable accommodation
to attend contact the registration office at 618- 344-4230.



2026 MADISON COUNTY ROE AGRICULTURE CAMP

Open to all Fall 3rd, 4th & 5th Graders - \$85
July 6-10, 2026 - 9:00AM to 2:00PM

Directed by the Madison County ROE
Rachel Lewis - rllewis@madisoncountyil.gov
office 618-296-4535 cell 618-979-1843



Register your fall 3rd - 5th grader at
<https://www.roe41.org/o/mcroe41/page/student-events>

Look for registration to open in March



* Camp includes daily farm visits & hands-on activities organized by the Madison County ROE

* Camp Location - Miner Park
194 S. Main St., Glen Carbon, IL 62034
(park is tucked in behind the library next to the covered bridge)



Illinois Extension
UNIVERSITY OF ILLINOIS URBANA-CHAMPAIGN



Madison County Farm Bureau

SEE YOU SOON



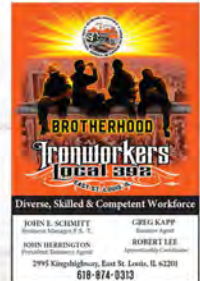


2026 MADISON COUNTY ROE CONSTRUCTION CAMP



Location - 201 Staunton Road, Troy, IL 62294
Directed by the Madison County ROE

Questions: Rachel Lewis - rlewis@madisoncountyiil.gov
618-296-4535 cell-618-979-1843
Brad Bevis - bbevis@roe41.org



June 8-12, 2026 - \$85 per camper
from 9:00AM to 3:00PM

Register your 7th-12th grade student at
<https://www.roe41.org/omcroe41/page/student-events>

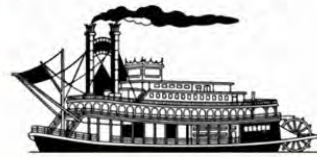


SUMMER HISTORY CAMP

JULY 13-16, 2026

TRANSPORTATION ADVENTURES

EXPLORING RIVERS, ROUTES, & RAILS



FOUR DAYS OF FIELD TRIPS AND EDUCATIONAL ACTIVITIES

AGES 9-12

9 A.M. - 3 P.M. DAILY

\$200 online registration at:

<https://www.roe41.org/o/mcroe41/page/student-events>

Information at madcohistory.org or call 618-656-7569.

MCHS Summer History Camp is staffed by professional teachers and educators.

Transportation is on school buses with experienced bus drivers.

Fee includes snacks, entry fees, and educational materials.

Campers should bring a daily lunch.



MADISON COUNTY
REGIONAL OFFICE
OF EDUCATION #41



MCHS: PRESERVING THE HISTORY OF MADISON COUNTY SINCE 1921





4-H Livestock Record Book Common Questions

Who has to turn in a livestock record book?

It is mandatory for any 4-H member who is participating in a livestock market class to complete a livestock record book.

What are the market animal classes that require a livestock record book?

- Rabbits: class RA 5: meat pen and class RA 6: single fryer
- Goats: class DG 7: dairy wether, class PG 6: pygmy wether, and class MG 7: meat goat wether
- Swine: SW 4: Barrow #1, SW 5: Barrow #2, and SW 6: Barrow #3
- Beef: BE 8: Steer and BE 9: Rate of Gain Steer
- Sheep: SH 5: wether

Where do I find the livestock record book?

You can get the livestock record book on the Madison, Monroe and St. Clair Counties web-page at https://extension.illinois.edu/sites/default/files/livestock_record_writable.pdf.

Is there a tip sheet on how to fill out the livestock record book?

Yes, the tip sheet can be found here:

https://extension.illinois.edu/sites/default/files/2020_livestock_record_book_instruction_guide.pdf

If I show in multiple livestock species for a market class, do I have to have one per each species?

If a 4-H member is showing multiple species in a market class, they must fill out a separate livestock record book for each species.

If I have more than one market animal in same species, can they be put on the same livestock record book?

If a 4-H member is showing multiple animals within the same species for a market class, they can choose to fill out the livestock record book for just one market animal, both market animals, or for the entire herd. For example, if a youth is showing two market wethers in the goat category, they can choose to fill out the record book for only one of them or include both animals in the same book. They can even add in their whole herd to the livestock record book if they want to.

When are livestock record books due?

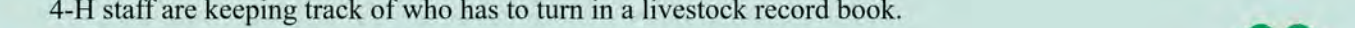
4-H members must submit their record books to the Extension Office by September 15, 2026.

What happens if I do not submit my livestock record book?

4-H members who do not submit a livestock record book by Sept. 15, 2026, will not be able to show in that livestock market class for the 2027 4-H Show.

Who is keeping track of who has to turn in a livestock record book?

4-H staff are keeping track of who has to turn in a livestock record book.



LIVESTOCK & HORSE RECORD BOOKS

All members are highly encouraged to fill out a 4-H Record Book for livestock and/or horse projects exhibiting at a 4-H Show.

It is REQUIRED to fill out 4-H Record Books for any livestock that members are showing in a market class.

Members must complete a livestock record book for the current year to be eligible to show in a market class for the preceding year.

The PDF versions of the books are found here: <https://go.illinois.edu/LivestockRecord>. They may be filled in on your computer, or you may print them off and fill them in by hand (neatly).

The Instruction Guide is found here: https://go.illinois.edu/LivestockRecord_Guide. It will help you through the process of filling out the book.

Books are due at the Extension office by
September 15.



840 TAGS IN BEEF, DAIRY CATTLE, AND SWINE

All swine, beef, and dairy cattle are required to have a USDA official animal identification number ear tag (840 tag). The tag must be both visually and electronically readable. We know that there will be many questions, so here are a few answers to some basic questions:

Who must have the 840 tag?

Beef – all heifers, all cows, and all steers being exhibited at the fair

Dairy Cattle – all heifers, all cows, all steers, and all calves being exhibited at the fair

Swine – all gilts and all barrows being exhibited at the fair

Where do I get the 840 tag?

Breeder in which you purchased your animal from (up to breeder)

Purchase tag from a farm supply store (Valley Vet, Nasco)

Purchase from Department of Agriculture:

<https://agr.illinois.gov/animals/animalhealth/premises-registration.html>

How do I purchase my own tags?

The location where the animal is being kept will have to have a registered Premise ID from the state of Illinois. With the Premise ID, you can purchase tags from a farm supply store such as Valley Vet, Nasco, or the Department of Agriculture.

We don't have a Premise ID, which hasn't been updated. What do we do?

You can obtain an application from the Illinois Department of Agriculture and send it in. The turnaround time is very quick.

If you have a Premise ID but need it updated, contact agr.premises@illinois.gov, and she will help you!

If you need a new Premise ID, you can log onto <https://agr.illinois.gov> and search for "Fillable Premise Form," then fill it out and email it to the address listed on the form.

Will tags be checked when we arrive at the show?

Yes, superintendents will be checking that all beef, dairy cattle, and swine have the tag.

If an animal does not have a tag, they are not allowed to be on the fairgrounds.

There is a chance that a State employee will be at the show monitoring that tags are checked, and if they are not, then 4-H and the fairgrounds can be fined.



Check out the Madison County Foundation's 4-H Event Scholarship!

Interested in trying a new 4-H experience but not sure about the cost? Think about applying for a 4-H Event Scholarship! The Madison County Extension Education Foundation is offering up to five half-fee scholarships for this 4-H program year to help members cover costs to attend 4-H events such as the 4-H camp, the Illini Summer Academies, Outdoor Adventures Camp, or the Jr. Leadership Conference. Maximum scholarship amounts are \$100.

This is a “post-event” scholarship, meaning you must register, attend the event, and complete the requirements before receiving the funds for the scholarship. Applications are due 2 weeks before an event’s registration deadline, along with a separate reference letter from your 4-H leader. (Restrictions on who can serve as a reference are noted on the application.) If a member is selected for a scholarship, they must attend the event and, within 2 weeks after the event, provide a follow-up report on what they learned and how they plan to share the information.

Registrations for Memorial 4-H Camp will open January 13. If you are interested in applying for the camp scholarship, the new application should be available shortly on the Madison County 4-H webpage: [4-H in Madison County | Serving Madison, Monroe, and St. Clair Counties | Illinois Extension | UIUC](#). Scroll down to Scholarships and click on the Madison County Foundation 4-H Event Scholarship link.

4-H members may only be accepted for one scholarship per program year. Should a member be selected for a scholarship but not complete the requirements, that member will not be eligible for future scholarships. Please remember that a limited number of scholarships are available each 4-H program year.



MADISON COUNTY 4-H SHOWS



- 4-H Public Speaking – **March 23 at 6 pm** Madison County Farm Bureau
- Unit 4-H Horse Show - **May 9 at 9 am** Monroe County Fairgrounds
- 4-H Mini Fair (dogs, cats, and small pets)– **June 20 Dog starts at 8 am, Cat starts at 10 am, and Small pets at 11 am** Madison County Farm Bureau
- 4-H Food Show – **June 23 at 6 pm** Madison County Farm Bureau
- Set Up- **July 15 at 6 pm** Madison County Fair Grounds
- 4-H General Project Show - **July 20 at 5:30 pm** Madison County Fair Grounds
- 4-H Bottle Bucket/Calf - **July 21 at 10 am** Madison County Fair Grounds
- 4-H Dairy Show - **July 21 immediately following Bottle Bucket/Calf** Madison County Fair Grounds
- 4-H Rabbit Show - **July 22 at 6 pm** Madison County Fair Grounds
- 4-H Poultry Show - **July 23 at 9 am** Madison County Fair Grounds
- 4-H Master Showmanship - **July 23 at 3:30 pm** Madison County Fair Grounds
- 4-H Goat Show - **July 23 at 5:30 pm** Madison County Fair Grounds
- 4-H Swine Show - **July 24 at 8 am** Madison County Fair Grounds
- 4-H Beef Show - **July 24 at 12 pm** Madison County Fair Grounds
- 4-H Sheep Show - **July 25 at 9:30 am** Madison County Fair Grounds
- 4-H Project Pick Up - **July 26 at 11 am** Madison County Fair Grounds

Illinois
Extension **I**



2025-2026 4-H HANDBOOK

Here is this year's 4-H handbook for all 4-H members and families.

<https://go.illinois.edu/MadisonCounty4-HHandbook>.

The handbook covers what 4-H is, its policies, what clubs do, the event calendar, and so much more. If you have any questions, please contact Meghan Cope via email at mawolff@illinois.edu

2025-2026 4-H MEMBERSHIP POLICIES

Youth **five through seven years of age, on or before September 1** of the current 4-H year, may enroll in 4-H Cloverbud groups.

Youth who are **eight years of age and have not reached their nineteenth birthday on or before September 1** may enroll in 4-H clubs.

A youth who enrolls in a Madison County 4-H club must:

- **Attend at least four meetings** to be called a 4-H member. Youth who do not comply are not eligible to participate in 4-H exhibitions, receive 4-H premiums, or receive other 4-H awards and recognitions available to 4-H members. **(College students can be enrolled when they live away from home and must attend at least one meeting when they are home on breaks or virtually.)**
- **Present a talk or demonstration at a club meeting during the project year.**
- **Youth enrolled in a livestock market class must turn in a livestock record book by September 15. If not completed by September 15, the youth will not be able to participate in a livestock market class the following year.**
- Complete enrollment by **January 15 to exhibit projects at 4-H shows.** Youth may enroll after this date, but are not eligible to exhibit projects at shows. Projects can be added up to this deadline, but the addition of projects is not accepted online after this date (except for SPIN Clubs).



4-H General Show Projects Public Viewing

LOCATION:

**Expo Hall Basement at the Madison County Fairgrounds
2025 Park Hill Dr,
Highland, IL 62249**



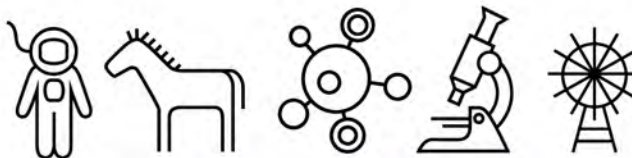
**Tuesday, July 21, 2026 to Sunday,
July 26, 2026 from 11 am to 8 pm**

Come explore the amazing projects created by our Madison County 4-H members!

- Judging: July 20 (closed to the public)
- Open to View: July 21 to July 26 at 11 am to 8 pm, stop by to see the projects and awards!

Discover the creativity of youth across a variety of areas, including:

- Aerospace
- Cooking
- Visual Arts
- Welding
- ...and much more!



Celebrate the talent and hard work of our 4-H members, there's something for everyone to enjoy!



College of Agricultural, Consumer and Environmental Sciences
University of Illinois, U.S. Department of Agriculture, and Local Extension Councils Cooperating.
University of Illinois Extension provides equal opportunities in programs and employment. If you need a reasonable accommodation to attend contact the registration office at 618- 344-4230.



4-H Livestock Shows Public Viewing

OPEN TO THE PUBLIC!

**Madison County Fairgrounds
2025 Park Hill Dr,
Highland, IL 62249**



Show Times

July 21

10:00 AM- 4-H Bucket/Bottle Calf Show in the Show Barn
Immediately Following the 4-H Bucket/Bottle Calf Show - 4-H Dairy Show in the Show Barn

July 22

6:00 PM- 4-H Rabbit Show in the Show Barn

July 23

9:00 AM- 4-H Poultry Show
3:30 PM- 4-H Master Showmanship in the Show Barn
5:30 PM 4-H Goat Show

July 24

8:00 AM- 4-H Swine Show
12:00 PM - 4-H Beef Show

July 25

9:30 AM- 4-H Sheep Show



Come out and experience the excitement of the Madison County 4-H Livestock Shows!

Watch local youth showcase their hard work and dedication as they present their animals in a variety of shows. It's a great opportunity to support the community, learn more about agriculture, and see the skills 4-H members have developed throughout the year.



Fun for all ages!

Created by University of Illinois Extension Staff!



Illinois Extension
UNIVERSITY OF ILLINOIS URBANA-CHAMPAIGN

College of Agricultural, Consumer and Environmental Sciences
University of Illinois, U.S. Department of Agriculture, and Local
Extension Councils Cooperating.
University of Illinois Extension provides equal opportunities in
programs and employment. If you need a reasonable accommodation
to attend contact the registration office at 618- 344-4230.



BOARD MEMBERS WANTED



Join the Madison County Extension Education Foundation Board of Directors. We are looking to fill current vacancies and positions of Board Members that will soon reach the end of their term..



HELP SUPPORT THE MADISON COUNTY EXTENSION COMMUNITY

Our Purpose and Mission: MCEEF was created solely for charitable purposes to provide the necessary assistance for the promotion and implementation of University of Illinois Extension education programs in the areas of enhancing youth, family, and community well-being; environmental stewardship; sustainable and profitable food production and marketing systems; and healthy society in and around Madison County, Illinois.

We Need Help For:

- Driving the mission forward
- Committee Involvement: member and committee chair
- Fundraising brainstorming
- Fundraising and event support

Meetings:

- Quarterly and As Needed

Address:

- 900 Hillsboro Ave
Edwardsville, IL 62025

Benefits:

- Helping make the community of Madison County better
- Emotional fulfillment
- Earning volunteer hours for annual MG and MN certification

Commitment: 3-year term



Madison County Shooting Sports 4-H Clubs



Are you interested in joining a Madison County 4-H Shooting Sports Club? Below are our clubs that you can join. If you have any questions, contact Meghan Cope via email at mawolff@illinois.edu.

▼ Grant Prairie Shooting Sports

Meeting: Seasonal
Discipline- Shotgun
Location: New Douglas
Leader: Jennifer Mucklow
(j.mucklow07@yahoo.com)

▼ Open Sight Shooting Sports Club

Meeting: Seasonal
Description: Archery
Meeting Date: Every other Friday
at 2:30 pm in Dorsey
Leader: Mindy Cory
(mindy.j.cory@gmail.com)

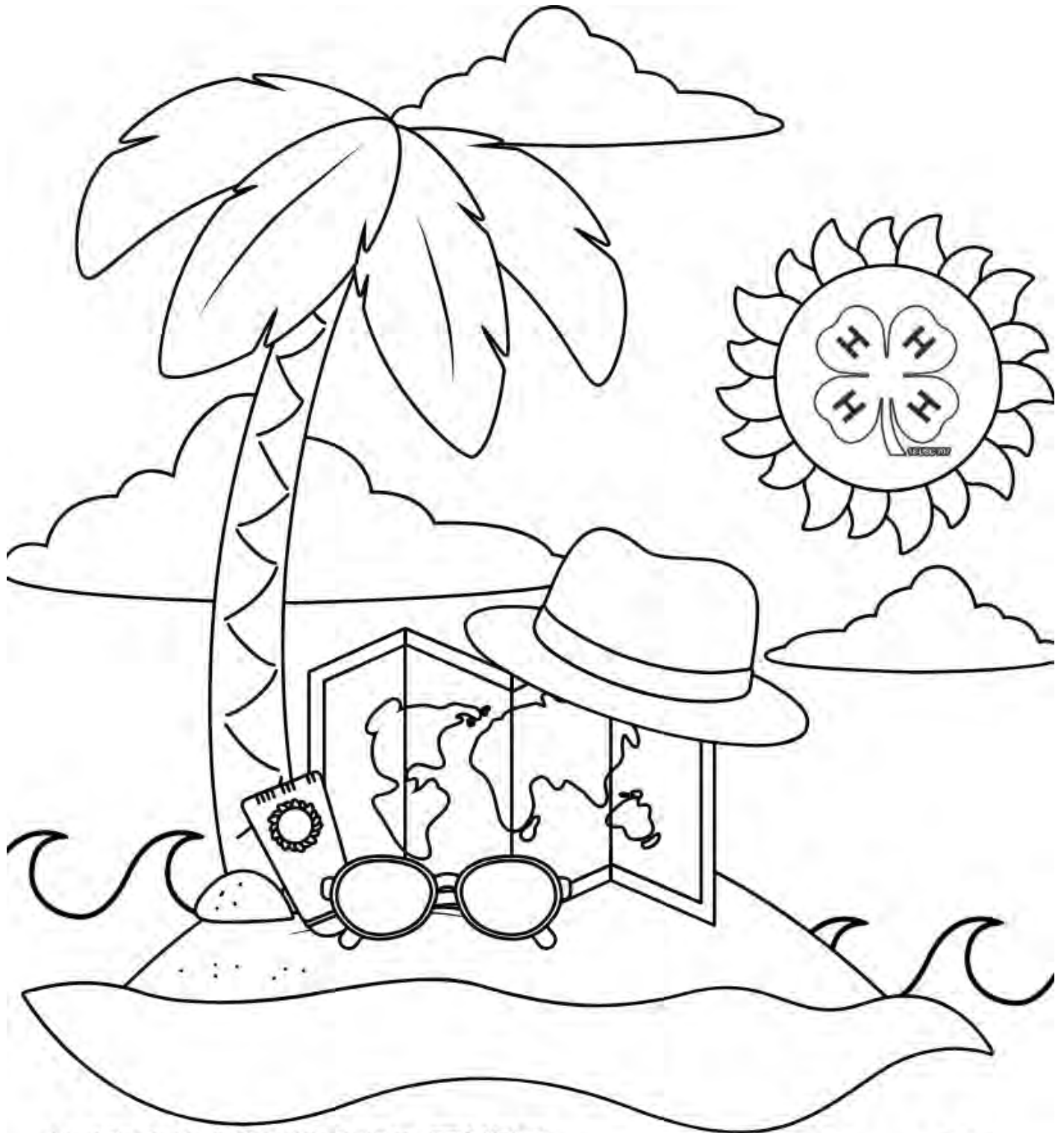
▼ Iron Sight Shooting Sports Club

Meeting Date: Seasonal
Discipline- Rifle
Location: Alton
Leader: Darrell Chrisenberry
(darrell.chrisenberry59@gmail.com)

▼ Staunton Road Rangers Shooting Sports Club

Meeting Date: Seasonal
Discipline- Pistol, Rifle, and
Shotgun
Location: Edwardsville
Leader: Max and Tamsey Bremer
(maxandtams@gmail.com)





**4-H IS THE PLACE ILLINOIS YOUTH AGES
5-18 CAN MAKE NEW FRIENDS, LEARN,
AND LEAD! SCAN THE CODE OR CONTACT
XYZ TO LEARN MORE!**



Author Credit: Lindsay McGuire University of Illinois
Extension, Office Support Assistant

COLLEGE OF AGRICULTURAL, CONSUMER & ENVIRONMENTAL SCIENCES University of Illinois | U.S. Department of Agriculture | Local
Extension Councils Cooperating University of Illinois Extension provides equal opportunities in programs and employment.



CALENDAR OF EVENTS

June

- June 1 - Fair Entry Deadline
- June 11 - 4-H Nature Walk
- June 11 - 4-H Cloverbuds Gardening with Little Roots
- June 15 - 18 - Youth Cooking School
- June 20 - Mini Fair
- June 23 - Food Show
- June 24 - Explore the Fairgrounds with 4-H

July

- July 15 - Fair Set Up Night
- July 20 - 4-H General Project Show at 5:30 pm Madison County Fair Grounds
- July 21 - 4-H Bottle Bucket/Calf at 10 am Madison County Fair Grounds
- July 21 4-H Dairy Show - immediately following Bottle Bucket/Calf Madison County Fair Grounds
- July 22 - 4-H Rabbit Show at 6 pm Madison County Fair Grounds
- July 23 - 4-H Poultry Show at 9 am Madison County Fair Grounds
- July 23 - 4-H Master Showmanship at 3:30 pm Madison County Fair Grounds
- July 23 - 4-H Goat Show at 5:30 pm Madison County Fair Grounds
- July 24 - 4-H Swine Show at 8 am Madison County Fair Grounds
- July 24 - 4-H Beef Show at 12 pm Madison County Fair Grounds
- July 25 - 4-H Sheep Show at 9:30 am Madison County Fair Grounds
- July 26 - 4-H Project Pick Up at 11 am Madison County Fair Grounds

August

August 15 - Madison County State Fair Day

September

September 15 - Livestock Record Book and Awards Applications Due

September 15 - Club Treasure and Club Secretary Book Due



What's going on with Illinois 4-H?

Find out here:

<https://emails.illinois.edu/newsletter/42/1495356942.html>



Illinois Extension
UNIVERSITY OF ILLINOIS URBANA-CHAMPAIGN

