

# CLOVERBUD

## SHOW BOOK



**Illinois Extension**

UNIVERSITY OF ILLINOIS URBANA-CHAMPAIGN



College of Agricultural, Consumer and  
Environmental Sciences

## 4-H Club Emblem



The four-leaf clover with the letter "H" on each leaf, which stands for Head, Heart, Hands, and Health.

The colors of the emblem are green and white.

### 4-H Motto

"To make the best better."

*(This motto challenges everyone involved in 4-H to do the very best job they can.)*

### 4-H Slogan

"Learn by doing."

# 4-H Pledge

I pledge

## MY HEAD

to clearer thinking,  
*(Right hand points to forehead)*



## MY HEART

to greater loyalty,  
*(Right hand over heart)*

MY HANDS  
to larger service, and  
*(Arms slightly bent, palms up)*



## MY HEALTH

to better living,  
*(Arms at side)*

for MY CLUB,  
MY COMMUNITY,  
MY COUNTRY,  
and MY WORLD.

# Table of Contents

4-H Emblem, Slogan, Motto & Pledge .....	2
Policies and Procedures .....	5
What To Expect .....	6



<b>CLUB EXHIBITS.....</b>	<b>8</b>
Cloverbud Club or Group Display .....	8
<b>INDIVIDUAL EXHIBITS .....</b>	<b>9</b>
<b>Animal Sciences</b>	
Embryology .....	9
Farm Animals .....	10
Veterinary Science .....	11
<b>Career/Leadership</b>	
Life Skill Development.....	12
Personal Development.....	13
<b>Civic Engagement</b>	
Exploring 4-H.....	14
Latino Cultural Arts .....	15
Welcome to 4-H .....	16
<b>Creative Arts</b>	
Communicative & Expressive Arts.....	17
Craft Beading.....	18
<b>Food Systems</b>	
Vegetable Gardening .....	19
<b>STEM</b>	
Aerospace .....	20
Bicycle .....	21
Science & Technology .....	22

# Policies and Procedures for Cloverbud Exhibits

1. The Cloverbud 4-H year is from September 1 to August 31.
2. Any youth who is at least 5 and not yet 8 years of age as of September 1 of the current program year can enroll in the 4-H Cloverbud program.
3. To be able to exhibit a Cloverbud project, members must be enrolled in zSuite with the Cloverbud Project selected. All entries need to be submitted to Becky by the registration deadline set by your county's 4-H program.
4. Family members and leaders are encouraged to assist Cloverbud members with their projects, but not do the projects for them.
5. All participants will receive a ribbon; however, Cloverbud exhibits are not eligible for premiums.
6. Exhibits should be made during the current 4-H year (between September 1 and the Cloverbud Show date).
7. All Cloverbuds will be given the opportunity to participate in conference interaction (telling a "judge" about their project and answering questions).
8. If a Cloverbud needs a reasonable accommodation to participate, call the local Extension office.
9. University of Illinois Extension personnel or their assigned agents do not assume liability for loss, theft or damage to any exhibit.
10. Check with your local Extension office for entry deadlines and show dates/times.
11. Please see the 4-H Show Book at <https://extension.illinois.edu/fjprw/4-h-jackson-county> for additional guidelines not listed here. Illinois 4-H Code of Conduct and Safety Requirements for In-Person Events of the Show Book must be followed.

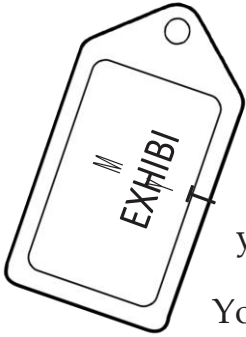
# 4-H Cloverbud Show What to Expect on Show Day

You've been learning lots of new things about your 4-H project, either on your own, with a group, or with your family. At the Cloverbud Show, you'll get the chance to show off something you've created this year and tell an adult all about it. It might be a little scary at first, but here is what to expect on Show Day...



## WHAT HAPPENS AT THE SHOW?

When you arrive at the 4-H Cloverbud Show, check in at the registration table. You will tell the volunteer which exhibits you've brought.



Then, you will be given your exhibit tag and directed to your judging area(s). The tag will need to be attached to or placed near your exhibit.

Your exhibit will be "judged" by an adult who will meet with each Cloverbud individually to talk about their exhibit.

## WHAT WILL THE JUDGE ASK?

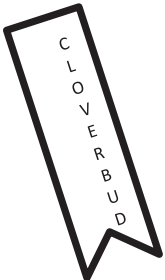
The judge will probably ask how you made the exhibit, what steps you used, and what materials you used. They may ask you what you learned. They may ask what areas you had trouble with. They may ask if you had fun!

The most important thing is to tell the truth. If you don't know an answer, simply say, "I don't know." If you got help from your family, tell the judge that, too. You are encouraged to work with your club or family on your project.



## GETTING A RIBBON

You will be spending time working on your exhibit, so 4-H rewards you for all you've learned by giving you a special Cloverbud ribbon.



# Club or Group Exhibits

## Cloverbud Series

Cloverbud Clubs of five or more youth have the opportunity for a group display. The display should include photos or finished pieces from activities within ONE of the listed sections in "The Big Book of 4-H Cloverbud Activities." Examples are listed below, but your group is welcome to do any age-appropriate activity within one of these categories. In order to participate, the club leader should enroll in "Cloverbud - Cloverbud Project" in 4-H Online and identify as a Project Leader prior to May 1, 2021.

### SCIENCE/TECHNOLOGY

example: Make Your Own Bubble Blower

*Page 36, Big Book of 4-H Cloverbud Activities*

### COMMUNITY AND EXPRESSIVE ARTS

example: Make A Cloverbud Poster

*Page 41, Big Book of 4-H Cloverbud Activities*

### HEALTHY LIFESTYLE

example: Making Butter

*Page 74, Big Book of 4-H Cloverbud Activities*

### ENVIRONMENTAL AND EARTH SCIENCE

example: Environmental Diorama

*Page 94, Big Book of 4-H Cloverbud Activities*

### PERSONAL DEVELOPMENT

example: The People I Can Trust

*Page 146, Big Book of 4-H Cloverbud Activities*

### CITIZENSHIP AND CIVIC EDUCATION

example: Collecting Food Donations

*Page 153, Big Book of 4-H Cloverbud Activities*

### CONSUMERISM AND FAMILY SCIENCE

example: How Do You Spend Time

*Page 176, Big Book of 4-H Cloverbud Activities*

### PLANTS AND ANIMALS

example: Vegetable Benefit Collage

*Page 235, Big Book of 4-H Cloverbud Activities*



# Animal Sciences

## Embryology



**NOTE TO PARENTS:** These are suggestions for appropriate exhibits related to Embryology within the Cloverbud project. Instructions for these activities are available from the Extension office to get your child started. Your child is also welcome to come up with their own age-appropriate exhibit about Embryology (no live animals will be allowed).

### EMBRYONIC DEVELOPMENT

*Pages 12-13, Hatching Helper's Guide*

Create a poster or write a report on the incubation of chicken eggs using the information in the "Daily Embryonic Development" activity. Be prepared to discuss what happens during each day of incubation.

– OR –

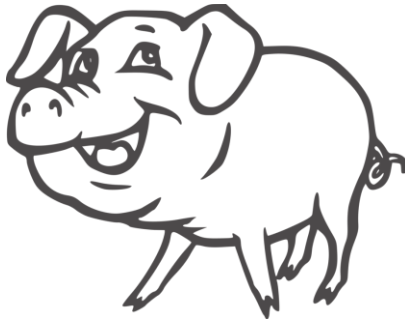
### PARTS OF AN EGG

*Page 15, Hatching Helper's Guide*

Create a poster labeling the parts of an egg using the information in the "Daily Embryonic Development" activity. Be prepared to discuss your poster and answer questions about the parts of the egg and why they are important.

# Animal Sciences

## Farm Animals



**NOTE TO PARENTS:** These are suggestions for appropriate exhibits related to Farm Animals within the Cloverbud project. Instructions for these activities are available from the Extension office to get your child started. Your child is also welcome to come up with their own age-appropriate exhibit about farm animals (no live animals will be allowed).

### ANIMAL-PRODUCT MOBILE

*Page 8, Exploring Farm Animals Helper's Guide*

Construct an animal-product mobile using the instructions found in the first activity of the Challenges section. Be prepared to exhibit your mobile, explain the steps you took to complete the activity and discuss what you learned.

– OR –

### ANIMAL COLLAGE

*Page 16, Exploring Farm Animals Helper's Guide*

Complete an "Animal Collage" and include information on a specific farm animal and how to care for that animal, using the instructions in the Experience (Doing) activity. Be prepared to exhibit your collage and discuss what you learned.

# Animal Sciences

## Veterinary Science



**NOTE TO PARENTS:** These are suggestions for appropriate exhibits related to Veterinary Science within the Cloverbud project. Instructions for these activities are available from the Extension office to get your child started. Your child is also welcome to come up with their own age-appropriate exhibit about Veterinary Science (no live animals will be allowed).

### **PET SAFETY PATROL**

*Page 20, From Airedales to Zebras*

Complete and exhibit the Pet Safety Patrol activity. Be prepared to discuss ways to keep your pets safe in your home and yard.

– OR –

### **COOL TOOLS**

*Page 28, From Airedales to Zebras*

Complete and exhibit the Cool Tools activity. Be prepared to discuss veterinarian's tools and what they do.

# Career/Leadership

## Life Skill Development

NOTE TO PARENTS: These are suggestions for appropriate exhibits related to Life Skill Development within the Cloverbud project. Instructions for these activities are available from the Extension office to get your child started. Your child is also welcome to come up with their own age-appropriate exhibit within ONE of the categories listed below.

### SCIENCE/TECHNOLOGY

example: Rainbow and Sunset Art

*Page 9, Big Book of 4-H Cloverbud Activities*

### COMMUNITY AND EXPRESSIVE ARTS

example: Digging Deeper

*Pages 49-50, Big Book of 4-H Cloverbud Activities*

### HEALTHY LIFESTYLE

example: I Know My Address

*Page 74, Big Book of 4-H Cloverbud Activities*

### ENVIRONMENTAL AND EARTH SCIENCE

example: Recycling Mobile

*Pages 99 & 101, Big Book of 4-H Cloverbud Activities*

### PERSONAL DEVELOPMENT

example: Olympic Flag Garland

*Page 137, Big Book of 4-H Cloverbud Activities*

### CITIZENSHIP AND CIVIC EDUCATION

example: Campaigning: "Why Elect Me?"

*Page 171, Big Book of 4-H Cloverbud Activities*

### CONSUMERISM AND FAMILY SCIENCE

example: Product Comparisons: Taste Test

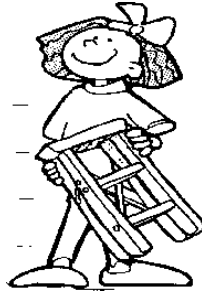
*Page 181, Big Book of 4-H Cloverbud Activities*

### PLANTS AND ANIMALS

example: Create a Pet

*Page 210, Big Book of 4-H Cloverbud Activities*

# Career/Leadership Personal Development



NOTE TO PARENTS: These are suggestions for appropriate exhibits related to Personal Development within the Cloverbud project. Instructions for these activities are available from the Extension office to get your child started. Your child is also welcome to come up with their own age-appropriate exhibit about Personal Development & Leadership.

**CHOICES, CHOICES** *Page 36, Step Up to Leadership Mentor Guide*

Create a two-color masterpiece using the instructions in the "Choices, Choices" activity. Be prepared to exhibit your artwork, explain how you made it, and discuss what you learned.

— OR —

**GATHERING UP LOOSE ENDS** *Page 52, Step Up to Leadership Mentor Guide*

Complete the "Gathering Up Loose Ends" activity using the instructions in the Step Out section. Be prepared to exhibit your floor plan and discuss what you learned.

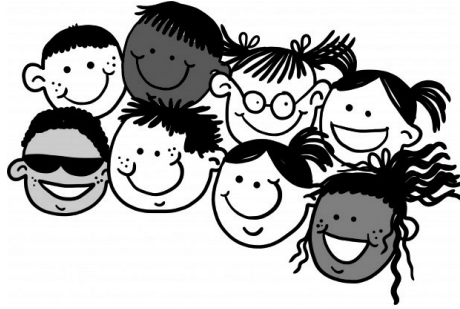
— OR —

**VISUALIZE IT** *Page 11, Discover 4-H Cloverbud Personal Development & Leadership Clubs*

Complete the "Visualize It" activity using the instructions in the "Setting Goals" section. Be prepared to exhibit your goal book and discuss what you learned.

# Civic Engagement

## Exploring 4-H



NOTE TO PARENTS: These are suggestions for appropriate exhibits related to Exploring 4-H within the Cloverbud project. Instructions for these activities are available from the Extension office to get your child started. Your child is also welcome to come up with their own age-appropriate exhibit about Exploring 4-H Group Activities.

### WONDERFUL DAY IN THE NEIGHBORHOOD

*Page 16, Exploring the Treasures of 4-H*

Complete and exhibit the "Wonderful Day in the Neighborhood" activity using the instructions in the Exploring My Community section. Be prepared to explain the steps you took to complete the activity and discuss what you learned.

— OR —

### PROJECTS, PROJECTS, GALORE!

*Pages 28-29 & 32, Exploring the Treasures of 4-H*

Complete a project collage using the instructions found in the "Project Collage" activity. Find a list of 4-H projects in the "Illinois Clover" book, and use the "Projects, Projects Galore!" activity to pick 1-3 "happy" projects for your collage. Be prepared to exhibit your collage and discuss what you learned.

# Civic Engagement

## Latino Cultural Arts



NOTE TO PARENTS: These are suggestions for appropriate exhibits related to Latino Cultural Arts within the Cloverbud project. Instructions for these activities are available from the Extension office to get your child started. Your child is also welcome to come up with their own age-appropriate exhibit about Latino Cultural Arts.

### RAINING INDOORS *Page 26, Latino Cultural Arts*

Complete a magic rain stick using the instructions found in the "It's Raining Indoors!" activity. Be prepared to exhibit your rain stick, explain how you made it, and discuss what you learned.

— OR —

### WHAT'S A HUICHOL? *Page 92, Latino Cultural Arts*

Complete a Huichol picture using the instructions in the "What's a Huichol?" activity. Be prepared to exhibit your picture, explain how you made it and discuss what you learned.

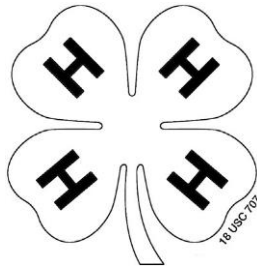
— OR —

### STORIES IN CLOTH *Page 104, Latino Cultural Arts*

Complete a paper mola using the instructions in the "Stories in Cloth" activity. Be prepared to exhibit your mola, explain how you made it and discuss what you learned.

# Civic Engagement

## Welcome to 4-H



**NOTE TO PARENTS:** This is one suggestion for an appropriate exhibit related to Welcome to 4-H within the Cloverbud project. Instructions for these activities are available from the Extension office to get your child started. Your child is also welcome to come up with their own age-appropriate exhibit about 4-H.

### **MY 4-H CLUB** *Page 4 & 23, Welcome to 4-H*

Complete the "My 4-H Club" and "4-H Family" activities. Be prepared to exhibit your "My 4-H Club" worksheet and discuss what you've learned about your club, its members and leaders.

— OR —

### **4-H PLEDGE** *Page 28, Welcome to 4-H*

Learn the 4-H Pledge and draw a picture of someone doing the hand gestures using the information in the "4-H Pledge" section. Be prepared to exhibit your picture and recite the 4-H Pledge.

— OR —

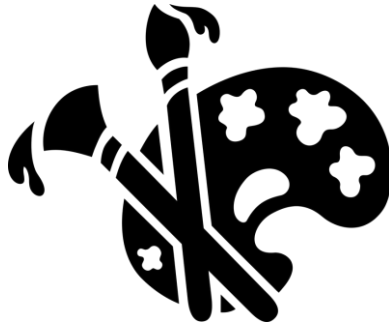
### **4-H BUSINESS MEETING** *Page 30-32, Welcome to 4-H*

Complete the worksheet in the "4-H Business Meetings" section using the information in "Five Steps of a Motion." Be prepared to exhibit your worksheet and explain the five steps of a motion.



# Creative Arts

## Communicative & Expressive Arts



**NOTE TO PARENTS:** These are suggestions for appropriate exhibits related to Communicative & Expressive Arts within the Cloverbud project. Instructions for these activities are available from the Extension office to get your child started. Your child is also welcome to come up with their own age-appropriate exhibit about Communicative & Expressive Arts.

### EXPRESSING YOU

*Page 8, Discover 4-H Cloverbud Communicative & Expressive Arts Clubs*

Complete Activity 2-Expressing You using the instructions in the "Picture This" activity. Be prepared to exhibit your artwork and explain what it means to you.

– OR –

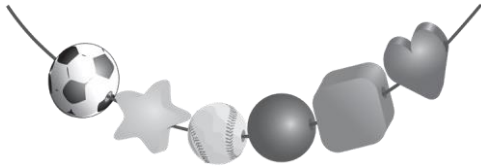
### MAKE SOME NOISE

*Page 10, Discover 4-H Cloverbud Communicative & Expressive Arts Clubs*

Make a musical instrument using the instructions in Activity 3-Make Some Noise of the "Can You Feel the Rhythm?" activity. Be prepared to exhibit your instrument, discuss the steps you took to make it, and explain what you learned.

# Creative Arts

## Craft Beading



**NOTE TO PARENTS:** These are suggestions for appropriate exhibits related to Craft Beading within the Cloverbud project. Instructions for these activities are available from the Extension office to get your child started. Your child is also welcome to come up with their own age-appropriate exhibit about Beading Crafts.

### **BUBBLE BEAD WANDS**

*Page 2, Discover 4-H Craft Beading Clubs*

Make a bubble bead wand using the instructions in the "Bubble Bead Wands" activity. Be prepared to exhibit the bubble wand, discuss the steps you took to make it, and explain what you learned. *(Do not include the homemade bubble mixture with your exhibit.)*

– OR –

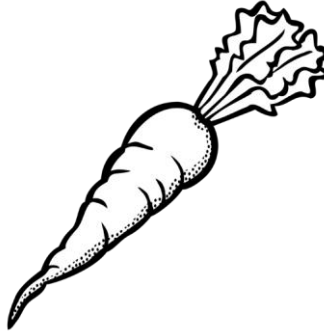
### **BEADED AMERICAN FLAG**

*Page 16, Discover 4-H Craft Beading Clubs*

Make a beaded American flag using the instructions in the "Beaded American Flag" activity. Be prepared to exhibit the craft, discuss the steps you took to make it, and explain what you learned.

# Food Systems

## Vegetable Gardening



**NOTE TO PARENTS:** These are suggestions for appropriate exhibits related to Vegetable Gardening within the Cloverbud project. Instructions for these activities are available from the Extension office to get your child started. Your child is also welcome to come up with their own age-appropriate exhibit about Vegetable Gardening.

### CONTAINER GARDEN

*Page 12, See Them Sprout*

Grow your own container garden using the information in the "What about a container garden" activity. Be prepared to exhibit your garden, explain the steps you took to plant your garden, and discuss what you learned.

– OR –

### PARTS OF A PLANT

*Page 19, See Them Sprout*

Make a creative diagram of the parts of a plant using the information in the "What's It For?" activity. Be prepared to exhibit your diagram and discuss what you learned.

# STEM

## Aerospace



NOTE TO PARENTS: These are suggestions for appropriate exhibits related to Aerospace within the Cloverbud project. Instructions for these activities are available from the Extension office to get your child started. Your child is also welcome to come up with their own age-appropriate exhibit about Aerospace (no rocket engines will be allowed).

### MARSHMALLOW ROCKET

*Page 4, Pre-Flight*

Make a marshmallow rocket using the instructions in the "5...4...3...2...1..." activity. Be prepared to exhibit the rocket, discuss the steps you took to make it, and explain what you learned.

– OR –

### SPACE BUGGY

*Page 12, Pre-Flight*

Make a space buggy using the instructions in the "Space Buggy" activity. Be prepared to exhibit your space buggy, discuss the steps you took to make it, and explain what you learned.

# STEM Bicycle



**NOTE TO PARENTS:** These are suggestions for appropriate exhibits related to Bicycle within the Cloverbud project. Instructions for these activities are available from the Extension office to get your child started. Your child is also welcome to come up with their own age-appropriate exhibit about Bicycles (due to space restrictions, physically riding a bicycle will not be allowed\*).

## **PROTECT YOUR NOGGIN** *Pages 8-9, Bicycling For Fun*

Display your bicycle helmet and be prepared to discuss how to select the right helmet using the information in the "Protect Your Noggin" activity.

— **OR** —

## **GETTING TO KNOW YOUR BIKE** *Pages 10-11, Bicycling For Fun*

Label the parts of a bicycle on a photo or drawing using the information in the "Getting to Know Your Bike" activity. Be prepared to discuss the parts and their purposes.

— **OR** —

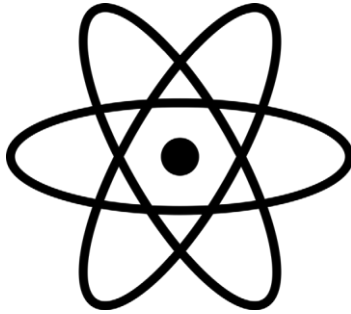
## **SIGN LANGUAGE** *Pages 26-27, Bicycling For Fun*

Draw and label common traffic signs you might see while riding your bicycle using the information in the "Sign Language" activity. Be prepared to discuss the signs and what they mean.

**\*BICYCLE RODEO (Open to Washington County Cloverbuds Only)**  
*See Class W5001 – Bicycle Rodeo on page 22 in the Unit 4-H Show Book for full details.*

# STEM

## Science & Technology



NOTE TO PARENTS: These are suggestions for appropriate exhibits related to Science & Technology within the Cloverbud project. Instructions for these activities are available from the Extension office to get your child started. Your child is also welcome to come up with their own age-appropriate exhibit about Science & Technology.

### LAWS OF MOTION

*Page 9, Discover 4-H Cloverbuds Science & Technology Clubs*

Complete the "Newton's First Law of Motion" activity using the instructions in the Laws of Motion section. Be prepared to exhibit your chart, explain the steps you took to complete the activity and discuss what you learned.

– OR –

### COMPUTER SCIENCE

*Page 15, Discover 4-H Cloverbuds Science & Technology Clubs*

Complete the "Using a Computer" activity using the instructions found in the "Computer Science" section. Be prepared to exhibit a drawing or photo of a computer with the components labeled and discuss what you learned.



**Jackson County**  
402 Ava Rd  
Murphysboro, IL 62966  
(618)-687-1727

**[extension.illinois.edu/fjprw/4-h-youth-development](http://extension.illinois.edu/fjprw/4-h-youth-development)**

University of Illinois College of Agricultural, Consumer and Environmental Sciences ·  
United States Department of Agriculture · Local Extension Councils Cooperating

University of Illinois Extension provides equal opportunities in programs and employment.

If you need a reasonable accommodation to participate in this program, please contact 618-687-1727.

Early requests are strongly encouraged to allow sufficient time to meet your needs.