

Scan here for
Google Maps.



Illinois Extension

Boone County FARM STROLL

Sunday, October 6, 2024, 10am-5pm

Welcome to the Farm Stroll, a self-guided tour of Boone County's diversified family farms. There's no beginning or end, just choose which farms to see and hit the road. Satisfy your local food cravings and curiosities on farms that grow your food!

- The Stroll is free, but bring cash for food and activities at the farms.
- Dress for a farm visit in all-weather clothes and closed-toe shoes.
- Turn in a completed **Farm Stroll Passport** for a chance to win prizes!
- Get info and share your pictures at facebook.com/northernfarmstroll.

For your safety:

- Drive carefully on rural roads
- Follow farmers' instructions
- Wash your hands regularly
- Keep children under control
- PLEASE NO PETS!

I 2024 Boone County FARM STROLL



Alpaca Pines Farm and Fiber Mill

21756 Beaverton Road, Poplar Grove, IL 61065

Alpaca Pines is home to both suri and huacaya alpacas, plus a llama. The mill processes a variety of fibers into yarn and more. Stop by the farm with the family to interact with the animals, tour the mill, enter a coloring contest, drawings and see demos of hand spinning. A variety of alpaca products available for sale.

Claretta Farm

10636 Orth Road, Garden Prairie, IL 61038

Claretta Farm began in the late 1960's and is home to 200 Holstein cows, along with another 200 young animals. They are housed in a free stall (or open-access) barn and can move around, eat, and drink or lay on mattresses in stalls at any time. Milking happens twice a day in the barn. Stop by our family farm to see how comfortable we make our cows so that they can be more productive. Producing high-quality milk for consumers is something we constantly strive to achieve.



DieHard Dairy

4915 Genoa Road, Belvidere, IL 61008

Our dairy farm is home to 120 cows. We have just installed two Lely robotic milking units. The cows have free access to milk 24-hours a day on their own with the robots. Farm tours will be offered at 11:00 a.m., 1:00 and 3:00 p.m.

Right around the corner...



Stop by **T-J's Farm Market (4919 Genoa Rd)** where we offer a variety of seasonal produce. Our biggest offering is our Homegrown Sweet Corn. You'll also find fall goodies including Amish grown mums, a u-pick pumpkin patch, fall decor and of course pumpkins of all shapes, sizes and colors.



Freedom Farms

34314 Wheeler Road, Kirkland, IL 60146

Freedom Farms is a family farm, owned and operated by a Navy Veteran. We provide beef, lamb, eggs, wool, hay and fresh fruits and vegetables.

At Freedom Farm you'll have an opportunity to tour the property, see tractors and other farm equipment up close, meet our animals (cattle, sheep, chickens, turkeys, ducks, dogs and cats) and learn about caring for a diverse barnyard! We will have samples and products available for purchase (cash only).

Homestead Farm

9222 Huber Road, Belvidere, IL 61008

Come see an assortment of farm animals! We will have farm raised meat and eggs for sale, so please bring a cooler.



Enjoy your time on the farm!

Illinois Wool and Fiber Mill

10828 Caledonia Road, Belvidere, IL 61008

Visit Illinois' first full-service fiber mill. Learn how wool and other fibers are made into yarn for knitting. Demonstrations all day. Make a needle felted small pumpkin decoration for Halloween. Visit the sheep and shop for warm wool mittens, boots and slippers at the Complete Sheep Shoppe.



Nature's Best Christmas Trees and Honey

13001 Illinois Route 76, Poplar Grove, IL 61065

Nature's Best Trees (and Bees!) is a small family Christmas tree farm where we have been selling cut-your-own Christmas trees for more than 30 years. We also tend to dozens of productive beehives and sell our 100% raw, natural honey through a self-serve honey barn. Nature's Best is one of the few beekeeping operations to offer honeycomb which becomes available every July and August.



Beekeepers will discuss the importance of honeybees as pollinators, bee life cycles, beekeeping processes and honey production, and many honeybee-related topics throughout the day of the Farm Stroll. Please drive slowly down our half-mile long drive as it is narrow! A roadside sign on Route 76 located directly across from Dawson Lake Road will guide the attendees to the honey barn. Please note that there is no direct access to our farm through the Countryside/Pacemaker Mall.

S & J Farm Kirkland LLC

1745 Cherry Valley Rd. Kirkland, IL 60146

Our six baby chicks have escalated very quickly. Over the last four years, we have expanded with over 150 chickens, 14 ducks, 4 cows and 2 horses! While the cattle graze on another pasture, you can always catch the horses, ducks and chickens when you come to pick up fresh eggs and veggies! Our greenhouse is still a work in progress but hoping to be running this fall. We try to be as regenerative as we can, from using our home-made fertilizer to heating our house and green house with wood only and cooling our house with a home-made cooling system using the well inside our house!



Susie's Garden Patch

10258 US Highway 20, Garden Prairie, IL 61038

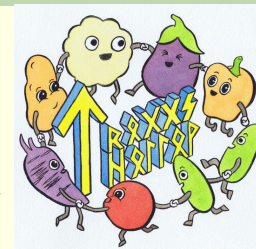
Susie's Garden Patch is a second-generation family-owned farm that has been operating since 1985. Growing lots of amazing vegetables, picked at the peak of ripeness, and extending the growing seasons with high tunnels. Stop by for a tour, check out our market store, and pick up some fresh produce, pies, pumpkins and more.



Trogg's Hollow CSA and Market Farm

11577 Poplar Grove Road, Poplar Grove, IL 61065

Chemical-free, regenerative agriculture, local microfarm. Growing produce you would normally get on your trip to the grocery store, year-round through CSA, farmers markets and an on-farm stand. Wagon rides and farm tours at 1:00, 2:00, 3:00 and 4:00pm. Don't forget to say hi to the furry and feathered friends!



Thank you for participating in this year's Boone County Farm Stroll! Questions? Call 815-544-3710
If you need a reasonable accommodation to participate in this event, please contact the Boone County Extension office.



Illinois Extension
UNIVERSITY OF ILLINOIS URBANA-CHAMPAIGN

University of Illinois College of ACES / USDA / Local Extension Councils Cooperating
University of Illinois Extension provides equal opportunities in programs and employment.