

YOUR GARDENING STORY STARTS HERE!

# NURSERY SCHOOL

LESSONS IN GARDENING

SATURDAY  
FEBRUARY 22  
8 AM – 2:30 PM  
VIBRANT ARENA  
MOLINE, IL



Illinois Extension

UNIVERSITY OF ILLINOIS URBANA-CHAMPAIGN

Support provided by  
The Melvin L McKay Charitable Trust

STEP INTO THE PAGES OF A  
BLOOMING TALE AT  
**NURSERY SCHOOL**  
**LESSONS IN GARDENING**  
**FEBRUARY 22, 2025**

Whether you're cultivating your first chapter or adding a new volume to your gardening journey, this event is the perfect opportunity to grow your knowledge and fuel your passion for the garden.

**Plot Summary: Connect with Horticulture Experts**

Join us on Saturday, February 22 at the Vibrant Arena in Moline, IL to dive into a day of gardening inspiration! Experts are ready to help you author your garden's next chapter. From practical advice to creative ideas, you'll gain the knowledge to grow your gardening story to new heights.

**Opening Chapter: 8:45 AM**

**Keynote: Perfectly Paired: Plants, Pollinators, & You**

Start your day with a captivating story of plants and pollinators, and learn how to create a pollinator-friendly garden.

**Choose Your Adventure**

Write your own plot by selecting two additional sessions that spark your curiosity. Explore topics that enrich your gardening tale and expand your knowledge.

**Workshops, Lunch, Shopping, and More!**

Sip coffee as you peruse garden vendors, gain wisdom from experts, and enjoy a delicious taco bar buffet (included). Connect with fellow enthusiasts during this engaging day.

**Closing Chapter: 1:15–2:30 PM**

**Keynote: Landscape Design**

End your adventure unlocking the key to designing stunning landscapes! Learn foundational principles and explore case studies to inspire your next masterpiece.



**Call for Vendors!**

Are you a vendor with garden-related items or services? Join us at Nursery School to connect with gardeners! Sign up at [go.illinois.edu/NSvendor](http://go.illinois.edu/NSvendor)

Registration due by Mon Feb 17.

Registration fee is \$70 per person.

[go.illinois.edu/NurserySchool2025](http://go.illinois.edu/NurserySchool2025)



# Nursery School Table of Contents



**Chapter 1 Keynote:**  
**8:45 – 9:45 AM**



## **Perfectly Paired: Plants, Pollinators, & You**

Presented by Emily Swihart, Illinois  
Extension Horticulture Educator



Dive into the fascinating world of plants and their crucial pollinator partners. In this session, you'll learn the importance of creating a thriving, pollinator-friendly garden that supports local wildlife. Emily Swihart, Horticulture Educator, will guide you through practical steps to attract and sustain bees, butterflies, and other pollinators in your own backyard. Leave with actionable tips and inspiration to design a garden that not only flourishes but helps nurture the ecosystem around you.

### **Meet Emily Swihart, Horticulture Educator**

With over 11 years of experience in community education, Emily holds a Bachelor's in Horticulture from Iowa State University and a Master's in Landscape Architecture from Kansas State University. She specializes in community forests, native ecosystems, and home fruit and vegetable production. Emily's engaging programs connect people with plants, providing valuable insights for all ages and experience levels.



**Doors open at 8AM. Keynote Session is at 8:45, followed by two morning session. Lunch is 12:15 – 1:15 with Taco bar (included) and time to visit vendors before your last Keynote session at 1:30. The event ends at 2:30.**



## **Chapter 2: 10 – 11 AM**

Select one from the following:

### **Plan to Plant your 2025 Garden: NEW Plants for Current Trends**

Kate Terrell, President  
Wallace's Garden Center

Join Kate Terrell of Wallace's—one of the largest and most respected garden centers in our area—as she shares her expertise in gardening trends for 2025. With her deep knowledge of the industry and years of experience, Kate will showcase must-have plants that align with current gardening trends, including heat- and drought-tolerant (water-wise) varieties, natives and natives, and plants perfect for cutting gardens. Discover the latest breeder introductions and get inspired to design a garden that thrives and delights in the year ahead!



**Ornamental Horticulture**

### **Honey and Health: Nature's Sweet Treat**

Kristin Bogdonas, Illinois Extension  
Nutrition and Wellness Educator

Honey is a true superfood with unique characteristics and nutritional value.

There are over 300 varieties of honey each with unique flavor, color, and aroma profiles. The popularity of honey has continued to grow over the past decade due, in part, to its nutritional and therapeutic uses. After this session, you will walk away with a better understand of honey varieties, health benefits, and therapeutic uses. You will also receive recipes and food samples highlighting the different honey types.

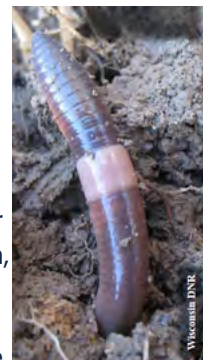


**Edible Plants**

### **Jumping Worms: Identification, Impact, and Prevention in Illinois**

Chris Evans, Illinois Extension Forester

Jumping worms are an invasive earthworm species spreading across Illinois. They can alter soil properties, affecting fertility, water retention, and plant growth. This session will cover how to identify jumping worms, their ecological impact, and preventive measures one can take to stop their spread.



**Nature and Environment**

# Nursery School Table of Contents



## Chapter 3: 11:15 am-12:15 pm

Select one from the following:

### Elevate Expectations with Raised Bed Gardening

Ken Johnson, Illinois Extension Horticulture Educator



Whether for convenience or accessibility, raised beds are a popular option for growing vegetable, fruits, and ornamental plants. Raised bed structures elevate the soil, and with it comes a variety of advantages for growing plants.

Ornamental Horticulture

### Tapestry Farms: An Urban Farm System in the QC

Ann McGlynn, Executive Director Tapestry Farms

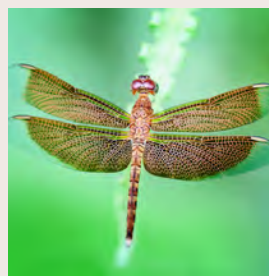


Explore Tapestry Farms, a nonprofit empowering refugees in the Quad Cities through urban farming. With 11 garden sites, they provide job training and grow over 10,000 pounds of fresh food annually using in-ground and hydroponic methods. Learn how their produce is cultivated and distributed to benefit the community.

Edible Plants

### The Enchanting World of Dragonflies and Damselflies

Amy Loving, Director of Education at Nahant Marsh



Have you ever wondered why dragonflies and damselflies are often found near water? The answer lies in their fascinating life cycle, which begins and develops in aquatic environments. This session will explore the unique biology of these remarkable insects, their vital role in ecosystems, and the stages of their life journey. You'll also discover the most common species in our region, their behaviors, and how to spot them in the wild. Perfect for nature enthusiasts and curious minds alike!

Nature and Environment

Lunch Buffet 12:15-1:15 pm:  
Taco bar on the vestibule

### Visit the vendors to win a Prize Basket!

Plan to visit the vendors at lunch. Fill out your "library card" as you "check out" the vendors and earn entry to the vendors' giveaway drawing held during the last session.



### Final Chapter: Keynote 1:15 PM Landscape Design

Presented by Nancy Kreith, Illinois Extension horticulture educator



If you're unsure where to begin with landscape design, this session will provide the foundation you need to create stunning and functional outdoor spaces. Learn essential design principles, including hardscape planning, layout techniques, and selecting the right plant combinations to bring your vision to life. The session will also cover practical installation recommendations to ensure long-lasting results. Real-world case studies will inspire and guide you in designing beautiful and sustainable home or community landscapes.

#### Meet Nancy Kreith, Horticulture Educator

Nancy brings extensive expertise in horticulture and landscape architecture, with a focus on community impact. She trains Master Gardeners in subjects like soils, ornamental plants, vegetables, and landscaping while overseeing volunteer projects in Cook County. Nancy earned her Bachelor's in Landscape Architecture and Master's in Natural Resources and Environmental Science from the University of Illinois, where she researched sustainable school gardens as teaching tools.



Epilogue: Prizes & Conclusion 2:30 PM



# Close the Chapter on Winter Open the Book on Gardening!



Turn the page on winter and start a new gardening chapter at Nursery School, the Quad Cities' premier gardening symposium! Presented by University of Illinois Extension and the Master Gardeners from Henry, Mercer, Rock Island, and Stark counties, this event is crafted for gardeners of all skill levels. From novice tips to advanced techniques, you'll discover ideas to bring your garden story to life.

## New This Year: Bookend Keynotes

Begin your day with inspiration and conclude with expert advice, creating a complete narrative of growth and learning. Be sure to visit our vendor booths and complete your "Nursery School library card" for a chance to be entered into a drawing to win exciting prizes!

## REGISTER NOW TO JOIN US!

Registration fees are \$70

[go.illinois.edu/NurserySchool2025](http://go.illinois.edu/NurserySchool2025)



Connect with experts and grow in your gardening knowledge!



Network with fellow gardeners over lunch and between sessions.



Morning coffee and rolls and a taco bar lunch are included.



Shop unique items from a variety of garden vendors.



## Illinois Extension

The College of Agricultural, Consumer and Environmental Sciences

Visit our website: [extension.illinois.edu/hmrs](http://extension.illinois.edu/hmrs)



### Henry/Stark Counties

358 Front St. Galva, IL  
(309) 932-3447

### Mercer County

910 13th St. Viola, IL  
309-513-3100

### Rock Island County

321 W 2nd Ave. Milan, IL  
(309) 756-9978