

FRANKLIN COUNTY 4-H



*4-H provides youth with the skills
to lead for a lifetime!*

Through 4-H, young people complete hands-on projects in areas like health, science, agriculture and citizenship in a positive environment when they receive guidance from adult mentors and are encouraged to take on proactive leadership roles.

Franklin County Clubs

20X Shooting Sports

Mudrunners

Equestrian Club

Mulkeytown Panthers

Hilltoppers

Puddle Jumpers*

Heartland Pathfinders

Thompsonville Patriots

Independent 4-Hers

Clubs are open to youth ages 8-18.

*Puddle jumpers is for children ages 5-7.

For more information or to join, contact Cindy Bauman at
(618) 439-3178 or bauman1@illinois.edu.



Illinois Extension

UNIVERSITY OF ILLINOIS URBANA-CHAMPAIGN

College of Agriculture, Consumer & Environmental Sciences
University of Illinois | U.S. Department of Agriculture |
Local Extension Councils Cooperating
University of Illinois Extension provides equal opportunities
in programs and employment. If you need a reasonable
accommodation to attend, please call (618) 439-3178.
Early requests are strongly encouraged to allow sufficient
time for meeting your needs.



18 U.S.C. 707

Jackson County 4-H Clubs



4-H empowers young people with the skills to lead for a lifetime. It's a research-based experience that includes a mentor, a hands-on project, and a meaningful leadership opportunity.

I Pledge My:



HEAD to clearer thinking,



HEART to greater loyalty,

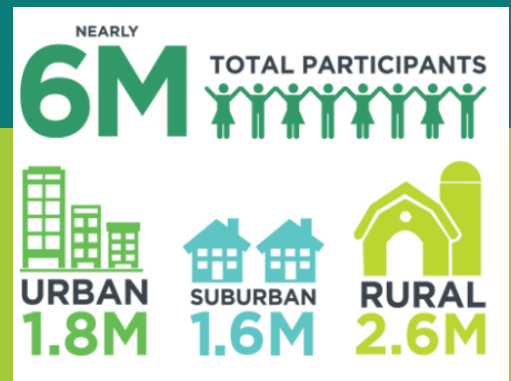


HANDS to larger service,



HEALTH to better living

for my club, my community,
my country and my world.



Campbell Hill Clubs

Campbell Hill Cherokees

Trico Pioneer Village (ages 5-14)

Carbondale Clubs

Brehm Preparatory

Carbondale Clovers (ages 8-18)

Python Computing Club*

Unity Point

**Summer only*

Murphysboro Clubs

Big Muddy Buddies

Chicken Club

Jackson County Wranglers

Shooting Sports (ages 8-18)

Somerset Clovers (ages 8-18)

Unless otherwise noted, clubs are open to youth ages 5-18.
To join 4-H, contact Becky Needham at (618) 687-1727.



Illinois Extension

UNIVERSITY OF ILLINOIS URBANA-CHAMPAIGN

University of Illinois • U.S. Department of Agriculture •
Local Extension Councils Cooperating
University of Illinois Extension provides equal
opportunities in programs and Employment. If you need a
reasonable accommodation to participate in programming,
contact (618) 687-1727. Early requests are strongly
encouraged to allow time to meet your access needs.

4-H provides youth with the skills to lead for a lifetime!

PERRY COUNTY

4-H



Perry County Clubs

Area 51

Blue Ribbon Go-Getters

Buckeyes

Clover Kids

Clover Leaf Journalism

Go Getter Buddies

Indians

Itsy Bitsy Spikers

Jr. Panthers Science

Kids in the Park

Lucky Clovers

Perry County Federation

Perry County Panthers

Sew Much Fun

Through 4-H, young people complete hands-on projects in areas like health, science, agriculture and citizenship in a positive environment when they receive guidance from adult mentors and are encouraged to take on proactive leadership roles.

Clubs are open to youth ages 5-18.

To join a club or to learn more about 4-H, call (618) 357-2126



Illinois Extension

UNIVERSITY OF ILLINOIS URBANA-CHAMPAIGN

College of Agriculture, Consumer & Environmental Sciences
University of Illinois | U.S. Department of Agriculture |
Local Extension Councils Cooperating
University of Illinois Extension provides equal opportunities in programs and employment. If you need a reasonable accommodation to attend, please call (618) 357-2126. Early requests are strongly encouraged to allow sufficient time for meeting your needs.

RANDOLPH COUNTY 4-H



4-H provides youth with the skills to lead for a lifetime!

We believe children can grow when they are surrounded by people who are cheering for their success. We encourage children to be themselves by exploring what's interesting to them and choosing a path that leads to happiness. Through 4-H, young people complete hands-on projects in areas like health, science, agriculture and citizenship in a positive environment when they receive guidance from adult mentors and are encouraged to take on proactive leadership roles.

Randolph County Clubs

- Country Crusaders (*Sparta*)
- Prairie Schooners (*Red Bud*)
- Ruma Roadrunners (*Red Bud*)
- Scotland Raiders (*Tilden*)
- Randolph County 4-H Federation (*Sparta*)
- Critter Club SPIN Club (*Sparta*)
- Canvas Kids SPIN Club (*Sparta*)

Clubs are open to youth ages 8-18 with special Cloverbud clubs available to youth ages 5-7.

Begin your 4-H adventure today! To join a club or to learn more about 4-H, contact Michaela Castens at mes379@illinois.edu or (618) 443-4364.



Illinois Extension
UNIVERSITY OF ILLINOIS URBANA-CHAMPAIGN

College of Agriculture, Consumer & Environmental Sciences
University of Illinois | U.S. Department of Agriculture |
Local Extension Councils Cooperating
University of Illinois Extension provides equal opportunities in programs and employment. If you need a reasonable accommodation to attend, please call (618) 443-4364. Early requests are strongly encouraged to allow sufficient time for meeting your needs.

Williamson County 4-H Clubs



4-H empowers young people with the skills to lead for a lifetime!

It's a research-based experience that includes mentors, *hands-on* projects and a meaningful *leadership opportunity* for youth ages 8-18 or cloverbuds ages 5-7.

I Pledge My:



HEAD to clearer thinking,



HEART to greater loyalty,



HANDS to larger service,



HEALTH to better living,

for my club, my community, my country and my world.

Club Opportunities:

Clover Hunters

Explorers

Herrin Hands of Help

Little Egypt Homesteaders

Little Roots

Shooting Sports

To join 4-H, contact
Ramona Girtman at
girtman@illinois.edu
or
(618) 993-3304.



Illinois Extension

UNIVERSITY OF ILLINOIS URBANA-CHAMPAIGN

College of Agricultural, Consumer and Environmental Sciences
University of Illinois • U.S. Department of Agriculture •
Local Extension Councils Cooperating
University of Illinois Extension provides equal opportunities
in programs and employment. If you need a reasonable
accommodation to participate, please contact your local
Extension office. Early requests are strongly encouraged to
allow sufficient time for meeting access needs.