



AUGUST 2020

Henry, Mercer, Rock Island & Stark

Deadlines:

- Aug. 10 - State Expo Entries for Weekend 1
- Aug. 17 - State Expo Entries for Weekend 2
- Sept. 25 - Club Awards
- Nov. 1 - State Awards
- Dec. 1 - Reenrollments

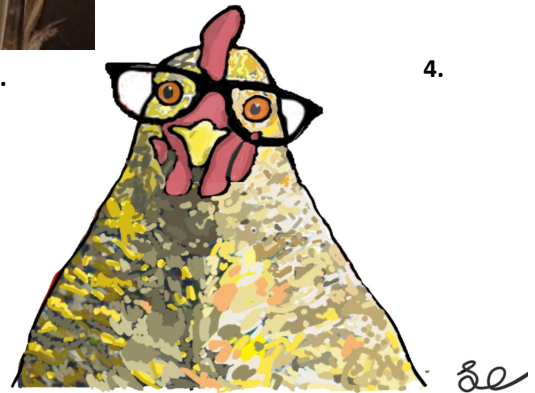
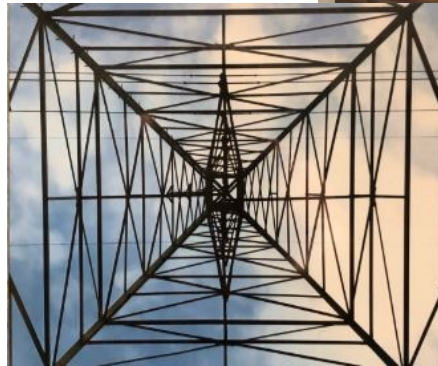
Events:

- Aug. 20 - Volunteer Café Conversation
- Aug 29-30- State Horse Show
- Sept. 5-6 - State Horse Show
- Sept. 11-3 - State Livestock
- Sept. 18-20 - State Livestock

Virtual Fair Wrap-Up

Thanks to everyone who participated in the virtual fair. We appreciate your effort and loved seeing all the creative projects such as those shown here:

1. Heather Heuermann, Stark County, Visual Arts Nature
2. Reagan Shike, Mercer, Floriculture
3. Breanne Adamson, Rock Island, Photography
4. Livvy Edmund, Henry, Visual Arts Computer Generated



Inside Insight:

- Member Updates 2
- Other news 3
- Fair Result Links 4
- Message from Staff 5

4-H Online 2.0

4-H Online is getting a makeover. It will look a little different when it opens for enrollment. The site will be down for at least the first two weeks of September. It may be a bit longer this year. Look for trainings on the changes to enrollment and instruction documents prior to attempting to enroll. Info to come.

Contact Us

We will be back in the offices sporadically after August 17. You can try calling the offices after that time. However, feel free to still use our direct lines until we resume full business hours.

Tracy - (217) 300-9116
 McCala - (217) 300-8321
 Teresa - (217) 300-9260
 Jennifer - (217) 300-7348

Club News and Notes



State Livestock Judging Contest

Congratulations!

Sheridan Hank, Mercer - 5th Overall in SR Division

Junior Division:

Kolby Causemaker, Henry - 1st Overall Individual

Knox Causemaker, Henry - 2nd Overall Individual

Stark County Team - 3rd Overall Team

-Team members included Kolby Causemaker, Chet Gillespie, Tyson Gillespie, and Tucker Taber.



Junior Livestock Expo

September 11-13 = beef, sheep, dairy & pygmy goats, rabbits & poultry. Entries for these shows must be postmarked by **August 10**.

September 18-20 = swine, dairy cattle & meat goats. Entries for these shows must be postmarked by **August 17**.

Open to ages 8-21. Held at the Illinois State Fairgrounds.

Entry Fees are:

\$20 - Beef

\$15 - Swine, Dairy, Sheep & Goats

\$1 - Rabbits & Poultry

Entry forms, schedules and instructions are now available at:

<https://www2.illinois.gov/sites/agr/Pages/JuniorShows.aspx>

Junior Horse Show

August 29-30 - English Show

September 5-6 - Western Show

All entries must be postmarked by **August 10**.

Open to ages 8-21

Held at Du Quion State Fairgrounds in Du Quion, IL

\$10 entry fee for all events

AWARDS

Now is the time to start looking at award applications. Several of the state level awards are different this year, so read the options and instructions carefully.

Due September 25 - Club Award

Club awards often go unclaimed due to lack of entries. This could be your club's time to get recognized for all the work you put in throughout the year. Applications at link below. If you need help filling out the app: <https://www.youtube.com/watch?v=eIGd7Y759-E>

Due November 1:

Experience Award - Same application as previous years with minor tweaks. Open to all 4-H youth 8+. Let us know if you want a tip sheet or a link to a tutorial video.

IL 4-H Scholarships - New this year. Open to youth ages 15-18. 5 \$1,000 scholarships available in each of 9 different categories. Tutorial video:

<https://www.youtube.com/watch?v=h0NVQVZ5oBQ>

Sustaining the Future Award - Former LCP award. Sponsored by Farm Bureau. Open to youth 17-19. Winners get to attend the Farm Bureau Premier 20 Conference.

National 4-H Conference has been cancelled for 2020.

All award applications and descriptions can be found on the Illinois State 4-H page here:

<https://4h.extension.illinois.edu/members/awards>



NEWS & notes

Miscellaneous



SHOOTING SPORTS UPDATE

The state shoots will be held a little differently this fall. Instead of a state-wide in-person shoot, there will be smaller, local competitions supervised by certified Level I instructors who will report youth scores centrally through an online system.

This format will run from September to December 2020. Registration is free and there will still be junior (11-13) and senior (14-18) age divisions. Registration opens **September 1**.

Disciplines will include compound archery, recurve archery, shotgun, and air rifle.

For full rules and the registration link, visit <https://4h.extension.illinois.edu/events/illinois-4-h-virtual-shoot-fall-2020>

New Year Club Planning Resources:

The IL 4-H Website has numerous resources and forms to help guide clubs as they prepare for the new year. We may not know what the structure of clubs will be this fall, but that doesn't mean clubs can't organize. Visit go.illinois.edu/IL4H and click on Clubs for forms like:

- Fillable club meeting agenda forms
- Club committee planning sheets
- Club yearly program plan
- Fillable secretary & treasurer books
- Club activity ideas



State 4-H General Project Show

Projects promoted to the virtual State Fair will be judged over the first three weeks of August. Each county's projects were assigned a week to be judged. Henry and Mercer are both judged in week 1, Rock Island during week 2, and Stark in week 3. Full results and judges comments will not be available until all projects have been judged. We will send those out as soon as we are able.



Even though we are ending the 2019-2020 year in a very odd fashion, the normal end of year requirements still apply. Secretary and Treasurer books will still need to be submitted this Fall. As always,

the first two pages of the Treasurer book are most important. If you need copies of those documents, let your county program coordinator know. Look for deadlines soon.

Volunteer Café Conversations

Register to participate in the first 4-H Volunteer Café Conversation to be held on **Thursday, August 20 at 7 p.m.** We are excited to launch this new opportunity for 4-H volunteers to meet virtually to discuss topics of interest as well as share ideas and challenges. The first chat will include:



- Welcome
- Successful Member Recruitment Strategies
- Club Programming to Energize Meetings
- Wrap-up

To register your intent to participate, visit this link: <https://web.extension.illinois.edu/registration/default.cfm?RegistrationID=22481>

NEWS & notes

VIRTUAL FAIRS

Fair Results

For more project highlights, visit individual county Facebook pages. For a full listing of county results and projects, see these sites:

Henry: <https://faireentry.com/Fair/Results/13972>

Mercer: <https://faireentry.com/Fair/Results/14010>

Rock Island: <https://faireentry.com/Fair/Results/14023>

Stark: <https://faireentry.com/Fair/Results/14029>



HENRY, MERCER, ROCK ISLAND, & STARK UNIT
email: uie-hmrs@illinois.edu
web.extension.illinois.edu/hmrs/

Rock Island County Office
321 W 2nd Ave
Milan, IL 61264
Phone: 309-756-9978; FAX: 309-756-9987

Henry/Stark Office
358 Front Street
Galva, IL 61434
Phone: 309-932-3447; FAX 309-932-3454

Mercer County Office
910 13th Street
Viola, IL 61486
Phone: 309-871-5032; FAX: 309-871-5034

Jenny Garner
County Director
jsgarnr@illinois.edu

Kristin Bogdonas
Extension Educator
Nutrition & Wellness
kmbogdo@illinois.edu

Russell Medley
Extension Educator
Community & Economic Development
rmedley@illinois.edu

Jennifer Peterson
Extension Educator
4-H Youth Development
jpetersn@illinois.edu

Martha Smith
Extension Educator
Horticulture
smithma@illinois.edu

Tracy Fowler-Pestle
Program Coordinator
Mercer 4-H
fowlerpe@illinois.edu

Teresa Kirwan
Program Coordinator
Ag-in-the-Classroom & 4-H
tkirwan@illinois.edu

Teresa Kirwan
Program Coordinator
Ag-in-the-Classroom & 4-H
tkirwan@illinois.edu

McCala Crawford
Program Coordinator
Rock Island 4-H
mcmille@illinois.edu

Office Hours
Monday – Wednesday – Friday
8 a.m. – 4:00 p.m.
closed for lunch 12–12:30 p.m.



Scribbles and Scrawl

Greetings,

For your patience through the complete upheaval of the traditional 4-H summer. For making the best of an unprecedented situation. For learning new things quickly. For stepping up when asked. For exemplifying the very best of 4-H.

We say:



Have a great August. Be looking for information about wrapping up this year and beginning the next.

We will all hope for a better 2020-2021 year.

Jennifer, Teresa, Tracy, & McCala



Find us on Facebook:

<https://www.facebook.com/4HHenryCounty?ref=hl>

<https://www.facebook.com/StarkCounty4H?ref=hl>

Find us on Twitter:

https://twitter.com/HMRS_Counties4H

HMRS Counties 4-H

State · County · Local Groups · United States Department of Agriculture Cooperating University of Illinois provides equal opportunities in programs and employment.

Programs and activities sponsored by University of Illinois Extension are open to anyone. If a special accommodation must be addressed in order for any individual to participate, please contact Jenny Garner at 309-932-3447 in advance of the event.