



Lesson Objectives:

Club members and parents will learn:

What a seed needs to make it sprout.

Time: 10-20 minutes

Each activity varies

Equipment and supplies:

- Clean jar or glass
- Paper towels
- Larger sized seeds such as peas, beans or squash

Preparations:

- Review Lesson
- Gather equipment and supplies

**Illinois
Extension**

4-H Club GO TO Resources



April 2021

Gardening - Seeds

When conditions are right-air, water, and warm temperatures - a seed sprouts or germinates. This happens in steps:

1. The seed takes in water through the seed coat.
2. It enlarges.
3. A root emerges first and grows down.
4. Then the shoot appears and grows up.

Directions

1. Roll several sheets of paper towels and insert them in a glass or jar.
2. Wedge 10 seeds between the paper towels and the jar.
3. Add about an inch of water to the bottom of the jar. The water will wick up the paper towel and the seeds will begin to germinate. Keep the paper towels moist.
4. Check the seedlings progress every day.
5. Once you can see the first true leaves plant the seedlings in the garden.



Before your seeds sprout make some predictions:

What day will the first root appear? _____

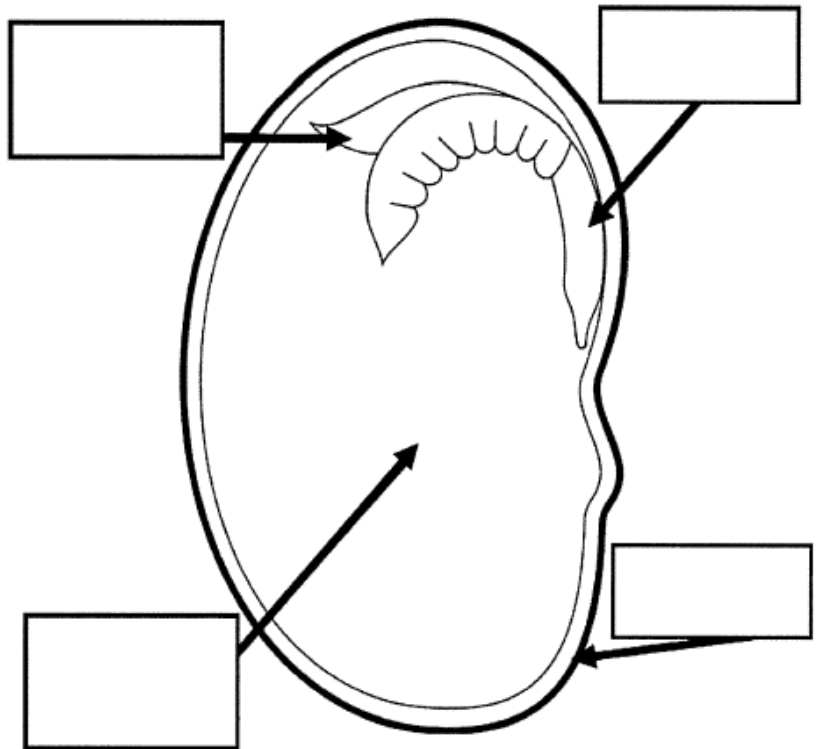
What day will the green shoot appear? _____

What day will leaves appear? _____

How many seeds will germinate? _____

How did different parts of the seeds change? _____

Checkout the different parts of the seed and research what each of them does to help a plant grow.



Word Bank

seed coat root leaves food



University of Illinois Extension — Unit 2 — Boone, DeKalb, Ogle Counties

Boone County Extension Office

205 Cadillac Court, Suite 3

Belvidere, IL 61008-1733

Phone: 815-544-3710

Program Coordinator: Melissa Irwin

Email: mmirwin@illinois.edu

Ogle County Extension Office

421 W Pines Rd, Ste 10

Oregon, IL 61061

Phone: 815-732-2191

Program Coordinator: Jodi Baumgartner

Email: jbmgtrnr@illinois.edu

DeKalb County Extension Office

1350 West Prairie Drive

Sycamore, IL 60178-3166

Phone: 815-758-8194

Program Coordinator: Nicole Groezinger

Email: groezing@illinois.edu

Unit 2 Educator: Johnna Jennings

Email: bjennin@illinois.edu

Sources & Additional Lesson info:

4-H Club GO TO Resources is being offered to 4-H clubs in Boone, DeKalb and Ogle Counties as a way to enrich and enhance 4-H experiences and programming at the club level. It is the goal of the Extension staff to assist 4-H leaders and officers in providing simple hands-on activities on a monthly basis that can broaden the 4-H club experience and as a result heighten positive youth development.

Resources: Little Roots Gardening Calendar for Cloverbuds 2021 developed by University of Illinois Extension - Livingston, McLean & Woodford County educators.

Prepared by: Nicole Groezinger, 4-H Youth Development Program Coordinator

COLLEGE OF AGRICULTURAL, CONSUMER & ENVIRONMENTAL SCIENCES

University of Illinois | U.S. Department of Agriculture | Local Extension Councils Cooperating

University of Illinois Extension provides equal opportunities in programs and employment.