

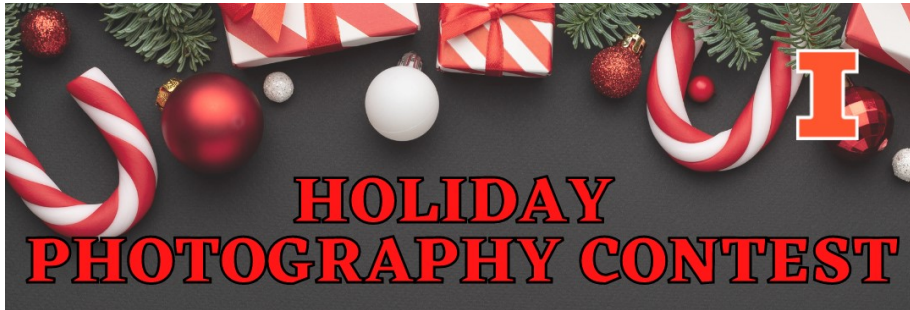


4-H FAST FACTS



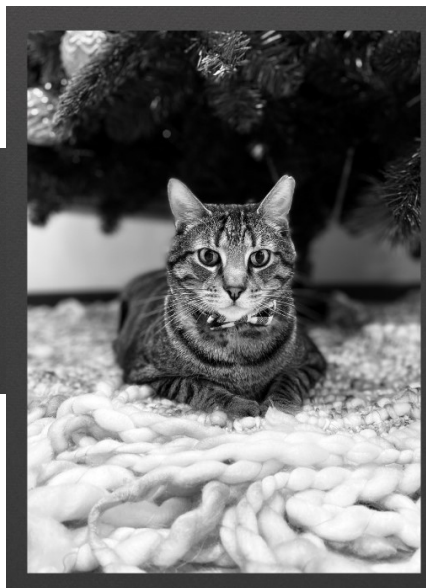
A Newsletter for **Montgomery County** 4-H Families

January 2022



UNIT 18 - Serving:
*Christian, Jersey,
Macoupin &
Montgomery Counties*

1ST PLACE
HAZEL HOLSHOUSER
AGE 9
MONTGOMERY CO.
WILD ROOTS



4TH PLACE
LANDON HILGENDORF
AGE 12
MONTGOMERY CO.
STARR SHOOTERS

OFFICES

Christian County Extension
1120 N. Webster Street
Taylorville, IL 62568
Ph.: 217-287-7246 Fax: 217-287-7248

Jersey County Extension
201 West Exchange, Suite A
Jerseyville, IL 62052
Ph.: 618-498-2913 Fax: 618-498-5913

Macoupin County Extension
#60 Carlinville Plaza
Carlinville, IL 62626
Ph.: 217-854-9604 Fax: 217-854-7804

Montgomery County Extension
#1 Industrial Park Drive
Hillsboro, IL 62049
Ph.: 217-532-3941 Fax: 217-532-3944

STAFF

Lisa Peterson, Acting County Director
lap5981@illinois.edu

Sara Marten,
4-H Youth Development Educator
marten1@illinois.edu

Jessica Jaffry, Jersey County
4-H Program Coordinator
jjaffry@illinois.edu

Kate Harding, Macoupin County
4-H Program Coordinator
harding@illinois.edu

Elisha Hughes, Montgomery County
4-H Program Coordinator
ehugh2@illinois.edu

Alexis McDowell, Christian County
4-H Program Coordinator
amcd06@illinois.edu

To keep up with 4-H happenings in Montgomery County, including workshops, check us out on Facebook at <https://www.facebook.com/montgomery4h>



Illinois Extension
UNIVERSITY OF ILLINOIS URBANA-CHAMPAIGN

extension.illinois.edu/cjmm/4-h-montgomery-county

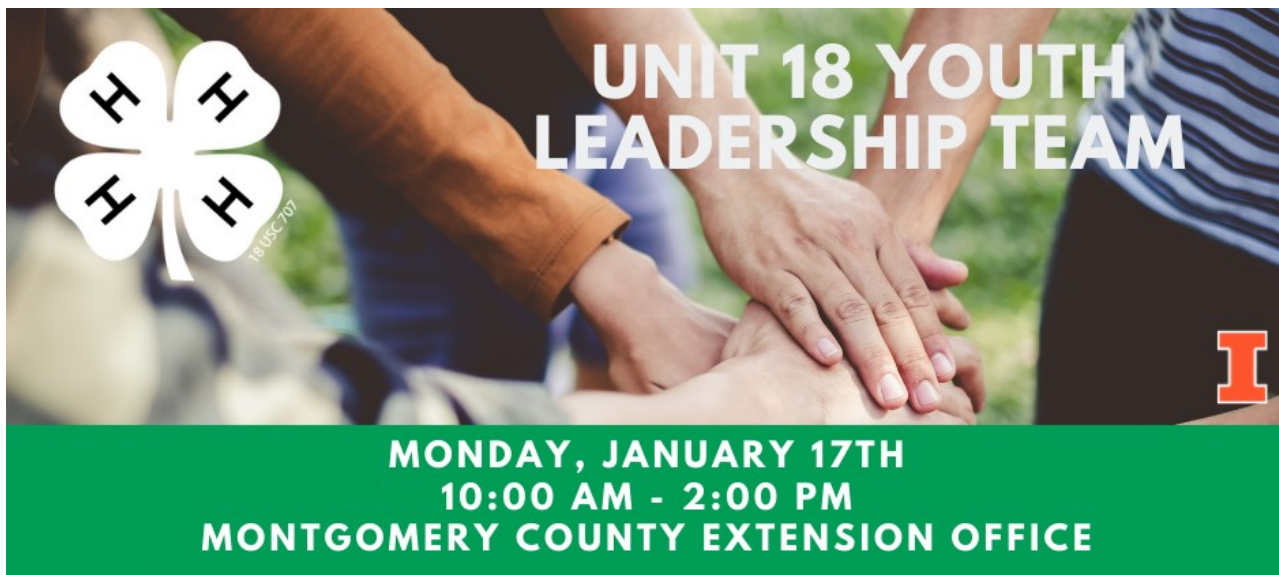


Register by Jan. 10 for Astro Explorers SPIN Club!

Astronomy is the study of everything in the universe beyond Earth's atmosphere! Astro Explorers will guide you through many online resources and activities to study the sun, moon, planets, stars, asteroids, comets & meteors, and space exploration.

You will receive a weekly guide listing the links to explore and suggestions for related activities. This will be a great opportunity for 4-H'ers to show their projects from this program at their county fair this summer!

Register at go.illinois.edu/cjmmastro



As a member of the Unit 18 Youth Leadership Team, you can...

Open to all 4-H members (**age 13 and up**) of Christian, Jersey, Macoupin, and Montgomery County

- Practice leadership in a variety of ways across Christian, Jersey, Macoupin, and Montgomery Counties
 - Help plan unit-wide events for yourself and fellow 4-H members
 - Advocate and promote 4-H locally and across the unit
 - Be a teacher and mentor to younger youth
 - Meet new 4-H members from other counties
 - HAVE FUN!

MULTICOUNTY Served on a committee to plan a multi-county 4-H event or program

To join, sign up online:

go.illinois.edu/cjmmteenteachertraining



COLLEGE OF AGRICULTURAL, CONSUMER, AND ENVIRONMENTAL SCIENCES
University of Illinois - US Department of Agriculture - Local Extension Councils Cooperating
University of Illinois Extension provides equal opportunities in programs and employment.

If you need reasonable accommodation to participate in this program, please contact Montgomery County Extension at 217-532-3941. Early requests are strongly encouraged to allow sufficient time for meeting your access needs.



The National Youth Summit Series are immersive, three-day experiences where you dive into the issues, expand your career horizons and grow as a leader while working with and learning from other teens and experts with shared passions.

2022 Agri Science Summit

We are seeking applications for our IL Delegation that will be attending the **2022 Youth Agri-Science Summit in DC, March 10-13th**. You can learn more about the summit and see a detailed agenda here: <https://4-h.org/parents/national-youth-summits/>

The Illinois 4-H Foundation will support the travel and registration of **six Illinois 4-H youth**.

Application Link for IL Delegation: Due Feb. 1st, 2022 <https://form.jotform.com/213485241850151>

We will be asking youth delegate participants to participate in all aspects of the summit as well as put what they learn into action in their home county. Details are provided in the application and I will be helping to coordinate as well once we have a delegation established. We are also requiring a \$100 registration fee from delegates which will be refunded upon completion of post-summit action steps.



2022 Healthy Living Summit

February 10-13, 2022 at the Hyatt Regency Bethesda, MD
Register by the January 10, 2022 priority deadline to save \$50!
Final Deadline to Register: January 24, 2022

You can learn more about the summit and see a detailed agenda here: <https://4-h.org/parents/national-youth-summits/>

At the National Youth Summit on Healthy Living, high school students develop the knowledge and skills to address issues surrounding nutrition, physical fitness, wellness, and emotional well-being. Working alongside professionals in family consumer science and healthy living, students will create action plans they can implement in their communities to teach other youth about what they have learned

<https://shop4-h.org/products/2022-national-4-h-youth-healthy-living-summit-february-10-13-2022>



4-H INTERNATIONAL

Join the U of I Global Club to have FUN and CHANGE the WORLD



Join the IGlobal team from the University of Illinois College of Education in meeting with students from around the world!

- * Work with peers from other countries virtually to solve global challenges
- * Learn about global markets, global climate change, UN Sustainable Development Goals
- * Make friends from around the world
- * Build your precollege expertise and Intercultural experience
- * Learn from University of Illinois professors and college students.

Guided by the University of Illinois professors and college students, each meeting will consist of group challenges to solve global problems. You do not have to be in 4-H to take part in this FREE opportunity. Enrollment is open to individuals and

groups/classrooms in 6-8th grade.

The club meets once a week, January through March and there are three time options to choose what works best for any schedule: Saturdays at 8AM, Mondays at 8AM also Tuesday at 9AM or 4PM.

*No language or previous experience required. Please have the registration submitted by Friday, January 7th 2022. go.illinois.edu/globalclub Send questions to ehugh2@illinois.edu

Host an international youth this summer

International students come to IL each summer and stay with a host family for about 4 weeks. Host a Japanese or South Korean youth this summer through States' 4-H International! Expand your family's cultural understanding, learn about new foods and customs, and possibly learn a new language, all while sharing your own. Your children will build lifelong friendships and will gain new perspectives on their own country, too! Families are needed for July 23 through August 18 (tentative dates). Applications are accepted until all placements are made. There is no cost for this program.

Students are matched with a host sibling by age gender and interests. So families hosting, must have a child the between 12-18.

Host family selection is dependent on completion of an application and screening process, as well as student availability and personality compatibility.

For more information or to apply, visit: <http://www.states4hexchange.org>.

Find us on Facebook @ [facebook.com/illinois4hexchange](https://www.facebook.com/illinois4hexchange) or contact Illinois S4-H Coordinators:

Miriam Rosenbohm @ rosenbohm07@comcast.net or Elisha Hughes @ ehugh2@illinois.edu.



January 2022

extension.illinois.edu/cjmm/4-h-montgomery-county

Tell Your 4-H Story –

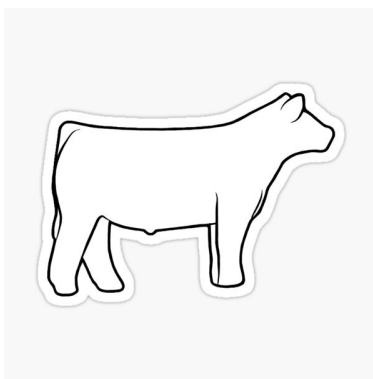
Join the *Speaking for Illinois 4-H* Team

We're looking for 4-H members interested in spreading the great news about 4-H. 4-H members 14 years of age or older can join the *Speaking for Illinois 4-H* team. There will be a virtual training offered on **Saturday, January 16 from 9-11 a.m.**



This virtual training, provided by the Illinois State 4-H Youth Leadership Team, gives you the chance to explore your own 4-H history and why you are involved, put that story into words, and learn the best ways to approach donors, civic groups, elected officials, and others to talk about 4-H. Learn why 4-H believes in Positive Youth Development and how we emphasize the essential elements of Belonging, Independence, Generosity and Mastery. All of this – and more – is a part of *Speaking for Illinois 4-H*! Once you're trained, you'll receive an invitation to be a part of our Legislative Connection events. Members of this team will meet a minimum of four times throughout the year virtually as a team to remain on the team.

Registration is open NOW @: <https://4h.extension.illinois.edu/events/speaking-illinois-4-h-training>. **Registration will close January 13.**



Livestock

WEIGH AND TATTOO– FEB 12 . All Rate of Gain class steers will need to be weighed and tattooed on this date. More details in the livestock letter COMING SOON

LIVESTOCK FAIR INFO IS COMING SOON– Details on what you need to do to prepare for show, requirements and deadlines will be included.

4-H VOLUNTEER CAFÉ CONVERSATIONS! – SAVE THE DATES!

Mark your calendars now so you can participate in the Spring 2022 *4-H Volunteer Café Conversations*.

If you are new to the Illinois 4-H program, the Café Conversations is a platform for 4-H Volunteers and 4-H members serving in leadership roles from across Illinois to meet virtually and discuss topics of interest, share both ideas and challenges. We will identify the topics for the next two Conversations in January!

Thursday, February 17, 2022; 7 PM
Thursday, May 19, 2022; 7 PM

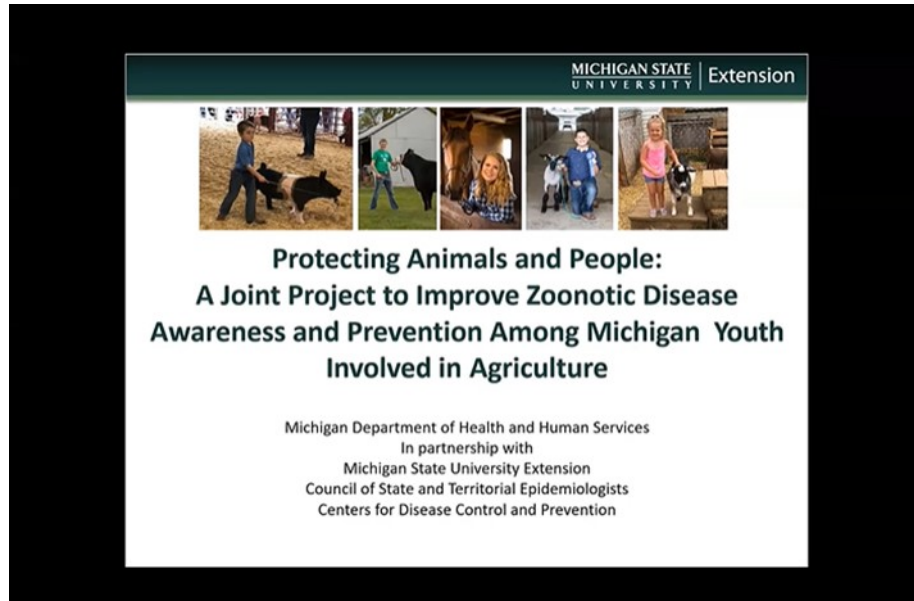
Watch for future registration details!



Join us for 4-H Volunteer

Café Conversations

ANIMAL SCIENCES



We are excited to share this closed-captioned webinar from our partners at Michigan State University Extension: [Zoonotic Disease Resource Webinar, Protecting People and Animals.](#)

Additionally, Michigan State University Extension has partnered with the Michigan Department of Health and Human Services to create multiple other resources designed to help prevent the spread of zoonotic diseases. These resources are highlighted on the [informational webinar hosted by MSU Extension](#) and also include educational resources available to promote healthy interaction between animals and people, strategies to bring awareness to the issue of the spread of zoonotic diseases and planning materials to keep animals and the public safe and healthy.

Additional resources can also be found highlighted on MSU Extension's [Fair and Animal Health webpage](#), and the [zoonotic disease webpage](#).

The webinar opportunity and development of these resources has been supported by a Cooperative Agreement from The Centers for Disease Control and Prevention (CDC) and Council of State & Territorial Epidemiologists (CSTE).

Save the date!

The 4-H State Horse Judging will be February 19th at Black Hawk East in Galva, IL (Registration at 11 AM, judging starts at noon)

And save the date for the State Horse Bowl, Hippology & Horse Speaking Contests that will be April 23 & 24 on UIUC campus!



4-H CAMP– MONTICELLO IL



Are you ready to get back to camping at 4-H Memorial Camp? We are! We are planning on having four (4) Summer Youth Camps in the summer of 2022. New this year, we will have an early registration period for 4-H Members only. Watch for additional information to be shared on the 4-H Memorial Camp [website](#) and on our Facebook [page](#).

Registration Dates:

Jan. 24-Feb. 6, 2022 4-H Members Only

Feb. 7, 2022- until full 4-H Members and non-members

Camp Dates:

June 5-9, 2022

June 12-16, 2022

July 5-9, 2022

July 17-21, 2022



Summer camp employees wanted!

If leading activities for youth campers, being a role model, working outdoors and interacting with your peers sounds like your kind of job, then you may be one of the people we are looking for. Apply to work with us this summer as we get back to Summer Youth Camping. We start accepting applications for the following positions January 1, 2022.

Summer Program Staff (18 years old minimum)

Summer/Seasonal Assistant Camp Director

Lead Male/Female Counselors

Lifeguards

Outdoor Education Director

Arts & Crafts Director

Creation Station (S.T.E.M.) Director

Recreation Director

Climbing Tower Director

Cabin Counselors (16 years old minimum)

Additional details and application materials can be found on the 4-H

Memorial Camp [website](#) towards the bottom of the page under *4-H Resources*.

Contact Andy Davis ardavis1@illinois.edu, (217) 762-2741 with any questions.



SHOOTING SPORTS



Special Workshop - Intro to 4-H Air Rifle Competitions

February 19, 2022 - Take your existing 4-H air rifle club to a new level! Competition training for 4-H Rifle Club leaders and up to three 4-H Club members. 9am-5pm at Central Illinois Precision Shooters in Bloomington, IL.

Contact Curt Sinclair at sinclair@illinois.edu for flyer and/or register at: go.illinois.edu/4HAirRifleTraining

4-H SHOOTING SPORTS ADULT VOLUNTEER CERTIFICATION TRAININGS

Registration details coming soon, but save these dates:

Sat., March 26, 2022

Tombstone Range, Marion, IL
(southern Illinois)

Sat., May 7, 2022

4-H Memorial Camp, Monticello, IL
(central Illinois)

Sat., July 16, 2022

Bi-State Sportsman's Club, Colona, IL
(N.W. Illinois)

Montgomery County 4-H Archery Club

Meets
Sundays from 1:30-3pm

Youth ages 8-18
Annual Club fee - \$10

Sign up at
go.illinois.edu/montgomeryarchery

Contact the Extension Office
217-532-3941 or ehugh2@illinois.edu

Follow Facebook page for updates
Montgomery County Straightshooters,



VIRTUAL FISHING TOURNAMENT



GET YOUR TACKLE READY - 2022 4-H Sport Fishing Virtual Monthly Challenges

Open to all current year 4-H members, but sweet prizes **only** for 4-H members registered in the 4-H Sport Fishing project for the 2021-2022 year. Tournament details coming soon!

April – Crappie State 4-H Tournament

May – Largemouth Bass 4-H State Tournament

June – Channel Catfish 4-H State Tournament

2022 4-H Show Dates

Public Presentations Saturday, March 26, 6 p.m.
Montgomery County Extension office

Visual Arts, Food and Clothing Show Friday, June 10
Montgomery County Extension office

General Show Saturday, June 11
Montgomery County Extension office
**We will try to accommodate members who are also exhibiting at the horse show*

Horse Show Saturday, June 11, 10 a.m.
Gillespie Lake Horse Arena

Cat Show Monday, June 20, 3:30 p.m.
Montgomery County Extension office

Dog Show Monday, June 20, 6 p.m.
Butler 4-H Park

Poultry Show Tuesday, June 21, 8:30 a.m.
Butler 4-H Park

Rabbit Show Tuesday, June 21, 10:30 a.m.
Butler 4-H Park

Dairy & Beef Shows Tuesday, June 21, 12:15
Butler 4-H Park

Sheep Show Wednesday, June 22, 9a.m
Butler 4-H Park

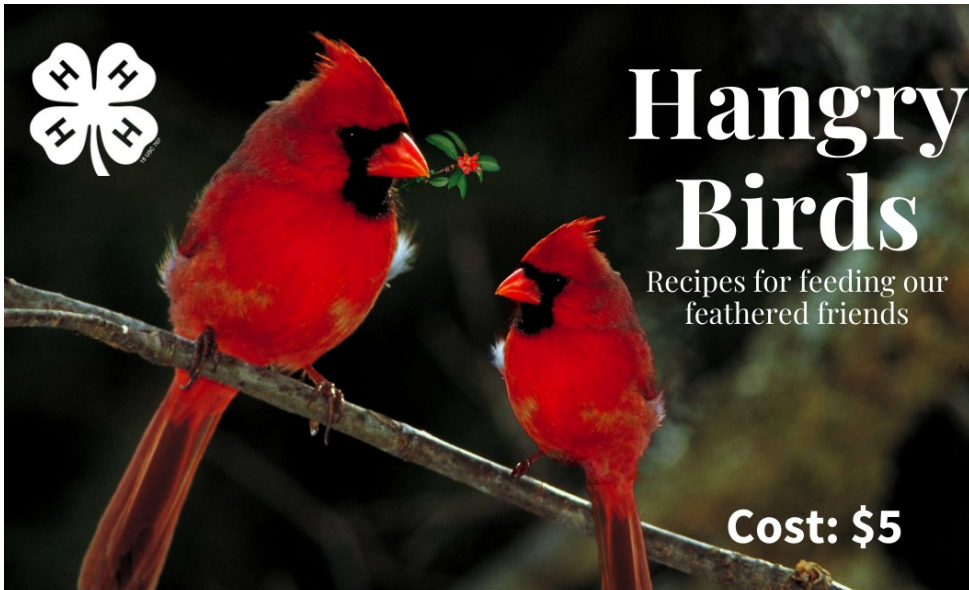
Goat Show Wednesday, June 22, Noon
Butler 4-H Park

Swine Show Friday, June 24, 8:30 a.m.
Butler 4-H Park



January 2022

extension.illinois.edu/cjmm/4-h-montgomery-county



IDENTIFY NATIVE BIRDS
LEARN WHAT THEY EAT
WHERE THEY LIVE
MAKE BIRD FEEDERS TO HANG AT BREMER

SATURDAY, FEB. 5
10 AM
MONTGOMERY COUNTY EXTENSION OFFICE
(#1 INDUSTRIAL PARK DRIVE, HILLSBORO)

After the workshop, attendees are invited to Bremer Sanctuary to hang their bird feeders.

Open to youth ages 5-18
(An adult will need to stay with youth ages 5-7)



Illinois Extension
UNIVERSITY OF ILLINOIS URBANA-CHAMPAIGN

Register at:
go.illinois.edu/4hbirdsofIL

FAIRY GARDENS

MAKE A FAIRY GARDEN TO DISPLAY IN A LOCAL NURSING HOME



SPRING COMMUNITY SERVICE PROJECT

- Pick up a kit between Feb 7-11, to make your garden at home. Directions will walk you through set up and making fairy sized decorations.
- Once finished, drop it off to the Extension office (by Feb 14) and it will go to a local nursing home for residents to enjoy.



REGISTRATION **GO.ILLINOIS.EDU/MONTFAIRYGARDEN**

No cost for the kit, but you may choose to purchase decorations.

Ehugh2@illinois.edu

Montgomery County 4-H Public Speaking Contest



Saturday, March 26
6pm

Montgomery County Extension Office

Divisions include:

- Formal Speech
- Illustrated Speech
- Original Works
- Oral Interpretation

Register online:

extension.illinois.edu/4-h-montgomery-county

Must be a current 4-H member to participate.



COLLEGE OF AGRICULTURAL, CONSUMER & ENVIRONMENTAL SCIENCES
University of Illinois | U.S. Department of Agriculture | Local Extension Councils Cooperating
If you need reasonable accommodation to participate in this program, please contact 618-498-2913.
Early requests are strongly encouraged to allow sufficient time for meeting your access needs.

Helpful Website links

Enroll online

il.4h.online.com

Order publications

go.illinois.edu/cjmm4hshop

County Website

extension.illinois.edu/cjmm/4-h-montgomery-county

County Facebook

www.facebook.com/montgomery4h

Illinois 4-H Website

4h.extension.illinois.edu/

January 2022

extension.illinois.edu/cjmm/4-h-montgomery-county

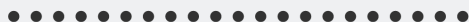


BECOME A 4-H TEEN TEACHER

Grow your leadership potential · Learn something new · Teach others · Give back

CORE TRAINING

(choose one to attend)



Saturday, January 29th

Montgomery County Extension Office
9:00 AM - 3:00 PM

Saturday, March 12th

Macoupin County Extension Office
9:00 AM - 3:00 PM

This training is required in order to attend future curriculum training. You only have to attend this training once in your 4-H career.

CORE Training Includes:

- Ages & Stages of Youth Development
- Experiential Learning Model
- Teaching Techniques
- Teambuilding (using Real Colors)
- Communication Skills



REGISTER


go.illinois.edu/cjmmteenteachertraining

QUESTIONS?

Email marten1@illinois.edu

OPEN TO
AGES 14+

FREE OF COST
Lunch Provided



SHOW BOOK COVER CONTEST

Help us design a cover for the 2022 4-H shows!

Submit your entry to the Extension Office by February 4

Entry Requirements

- "Montgomery county 4-H Show Book" and the year "2022" must be shown somewhere in the design.
- Use any fair or project theme.
- Must be a 4-H member.
- Your artwork must be drawn or printed in black ink only.
- Your entry must be on white paper.
- No entries with trademarked characters/symbols other than the 4-H clover accepted.
- Put your name and club on the BACK of your design in PENCIL.



Montgomery County
2021 Show Book
Learning to Make the Best Culture
One Project at a Time!



Illinois Extension
UNIVERSITY OF ILLINOIS URBANA-CHAMPAIGN

Workshop Series Public Speaking

March: 4, 11, 18, 25 & 26
6 - 7 PM

Final Public Presentation: March 26

REGISTER NOW

go.illinois.edu/montpublicspeaking

Questions: Contact Elisha Hughes at ehugh2@illinois.edu



Illinois Extension
UNIVERSITY OF ILLINOIS URBANA-CHAMPAIGN