



4-H FAST FACTS



A Newsletter for **Jersey County** 4-H Families

April 2021



**Congratulations Ava P. of All American Clovers
for winning the show book cover contest!**

UNIT 18 - *Serving:*

***Christian, Jersey,
Macoupin &
Montgomery Counties***

OFFICES

Christian County Extension

1120 N. Webster Street
Taylorville, IL 62568
Ph.: 217-287-7246 Fax: 217-287-7248

Jersey County Extension

201 West Exchange, Suite A
Jerseyville, IL 62052
Ph.: 618-498-2913 Fax: 618-498-5913

Macoupin County Extension

#60 Carlinville Plaza
Carlinville, IL 62626
Ph.: 217-854-9604 Fax: 217-854-7804

Montgomery County Extension

#1 Industrial Park Drive
Hillsboro, IL 62049
Ph.: 217-532-3941 Fax: 217-532-3944

STAFF

Amanda Cole, County Director
amandac@illinois.edu

Sara Marten,
4-H Youth Development Educator
marten1@illinois.edu

Jessica Jaffry, Jersey County
4-H Program Coordinator
jjaffry@illinois.edu

Kate Harding, Macoupin County
4-H Program Coordinator
harding@illinois.edu

Elisha Hughes, Montgomery County
4-H Program Coordinator
ehugh2@illinois.edu

To keep up with 4-H happenings in Jersey County, including workshops, check us out on Facebook at
<https://www.facebook.com/jersey4h>



Like us on
Facebook



Illinois Extension
UNIVERSITY OF ILLINOIS URBANA-CHAMPAIGN

extension.illinois.edu/cjmm/4-h-jersey-county



April 2021

extension.illinois.edu/cjmm/4-h-jersey-county

Need help remembering important dates?

Go to go.illinois.edu/cjmmcalendar to see events & deadlines for all activities within Christian, Jersey, Macoupin, & Montgomery Counties!



JERSEY COUNTY 4-H SWINE WEIGH-IN

MONDAY, APRIL 12, 2021

5:30 P.M.

31056 OLD FIDELITY ROAD
JERSEYVILLE, IL 62052

RSVP TO JESSICA AT JJAFFRY@ILLINOIS.EDU



Important Deadlines:

April 15—Deadline to enroll/
add/change projects to exhibit
at the 4-H shows

May 1—Deadline for YQCA and
QAEC



Illinois Extension
UNIVERSITY OF ILLINOIS URBANA-CHAMPAIGN



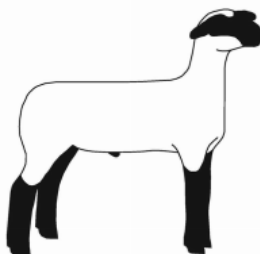
JERSEY COUNTY 4-H SHEEP WEIGH-IN

SATURDAY, MAY 1, 2021

9 A.M.

31056 OLD FIDELITY ROAD
JERSEYVILLE, IL 62052

RSVP TO JESSICA AT JJAFFRY@ILLINOIS.EDU



Illinois Extension
UNIVERSITY OF ILLINOIS URBANA-CHAMPAIGN





4-H MEMBERS EXHIBITING A LIVE ANIMAL AT THE 2021 4-H SHOWS IN ONE OF THE FOLLOWING PROJECT AREAS ARE REQUIRED TO COMPLETE THIS TRAINING EVERY YEAR:
-BEEF-DAIRY-GOAT-SHEEP-SWINE-

MEMBERS CAN ATTEND ANY SESSION. ALL SESSIONS WILL COVER THE SAME TOPICS AND MATERIAL.

Christian County Extension Office

Thursday, April 8th 6-7:30 pm
Saturday, April 24th 9-10:30 am

1120 N. Webster St.
Taylorville, IL
LOCATION PENDING

Macoupin County Extension Office

Monday, March 8th 6-7:30 pm
Thursday, April 29th 6-7:30 pm

#60 Carlinville Plaza
Carlinville, IL 62626

**CLASS SIZES LIMITED.
MASKS REQUIRED WHILE
INDOORS.**

Jersey County Extension Office

Tuesday, March 23rd 3-4:30 pm & 5-6:30 pm
Friday, April 9th 3-4:30 pm
Tuesday, April 27th 3-4:30 pm & 5-6:30 pm

201 W. Exchange St. - Suite A
Jerseyville, IL

Montgomery County Extension Office

Saturday, March 27th 9-10:30 am
Monday, April 12th 6-7:30 pm

#1 Industrial Park Drive
Hillsboro, IL 62049

**Register online at:
<https://yqca.learngrow.io>**

Cost - \$3

**Instructor - Sara Marten, 4-H
Youth Development Educator**





County-Wide Community Service

TO BENEFIT RIVERBEND HUMANE SOCIETY

Join fellow 4-H members and donate to
benefit the local Jersey county
animal shelter Riverbend Humane Society

Donations can be dropped off at the Jersey County
Extension Office April 1 - April 30

ITEMS NEEDED:

Scoopable cat litter
Purina Cat Chow (green or blue bag)
Long-lasting dog chew treats
Dog toys for strong chewers
Cleaning items (bleach, PinsoL, Pinalen, Fabulosa)
Dawn dishwashing liquid
Liquid laundry soap
Gifts cards to Tractor Supply (to purchase kennels)

**Illinois
Extension**

University of Illinois - US Dept. of Ag. - Local Extension Councils Cooperating
University of Illinois Extension provides equal opportunities in programming
and employment. If you need a reasonable accommodation to participate,
please contact 618-498-2913. Early requests are strongly encouraged.

April 2021

extension.illinois.edu/cjmm/4-h-jersey-county

CHRISTIAN, JERSEY, MACOUPIN, AND MONTGOMERY 4-H

PLANT LIFE



ALL ABOUT SOYBEANS

APRIL 15 7PM

VIA ZOOM

AGES 10-18

Join Corteva Sr. Agronomist Andy Harding live via Zoom and learn all about soybeans and plant life. Participants will learn about plant science, agronomy as a profession, and learn about the the production of soybeans.

Register by Tuesday, April 13 at:

go.illinois.edu/plantlife

For questions or reasonable accommodations, please call 217-854-9604.

Illinois Extension



CORTEVA
agriscience



CHRISTIAN, JERSEY, MACOUPIN,
& MONTGOMERY COUNTY 4-H

PHOTOGRAPHY BASICS

JOIN US VIA ZOOM
TUESDAY, MAY 4 AT 7PM

Learn about:

- History of Cameras
- Mechanics of a Digital Camera
- Photography as a Career or Hobby
- Tips for taking Better Pictures

Local photographer Rebekah Cloninger will help lead this session!

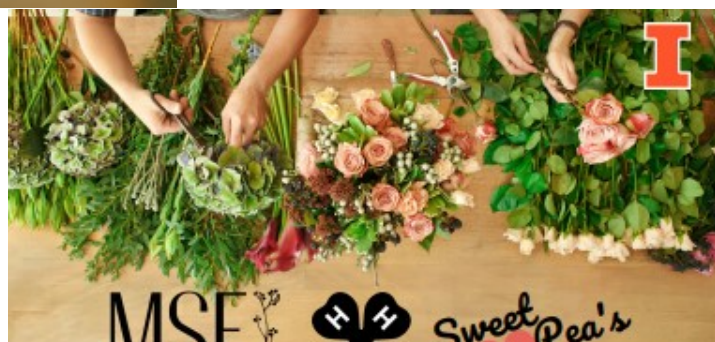
Register by Tuesday, April 27 at the following link:
go.illinois.edu/photobasics

A Zoom Link will be e-mailed to you after registration is complete.

Illinois Extension



COLLEGE OF AGRICULTURAL, CONSUMER AND ENVIRONMENTAL SCIENCES
University of Illinois at Urbana-Champaign - US Dept. of Ag - Local Extension Councils Cooperating
University of Illinois Extension provides equal opportunities in programs and employment.
If you need a reasonable accommodation to participate, please contact 217-854-9604.



MSF
main street florist



Sweet Pea's

Flower Arranging

Thursday, April 22, 2021 6:30pm

Join Sarah LoBue of Main Street Florist via Zoom
to create a floral arrangement at home.

\$10

Kits can be picked up April 21
9am-4:30pm from Sweet Pea's
100 E. Arch St. Jerseyville

**Youth
Ages 8-18**

Kits will include:

Supplies needed for arrangement
Care Tips

4-H Floriculture

REGISTER BY APRIL 15 AT THE LINK BELOW:

[HTTPS://GO.ILLINOIS.EDU/FLOWERCLASS](https://go.illinois.edu/flowerclass)

All Payments will go to your local florist for supplies.
Zoom link will be e-mailed closer to the program date.

Illinois Extension

COLLEGE OF AGRICULTURAL, CONSUMER AND ENVIRONMENTAL SCIENCES
University of Illinois at Urbana-Champaign - US Dept. of Ag - Local Extension Councils Cooperating
University of Illinois Extension provides equal opportunities in programs and employment.
If you need a reasonable accommodation to participate, please contact 217-854-9604.

April 2021

extension.illinois.edu/cjmm/4-h-jersey-county

Jersey County 4-H Public Speaking Contest



Thursday, April 29, 2021

Jersey County Extension Office
201 W. Exchange Jerseyville, IL

Speeches will be scheduled in 15 minute increments beginning at 6 p.m.

Each participant is limited to 10 people in attendance and masks are required.

Divisions include:

- Formal Speech
- Illustrated Speech
- Original Works
- Oral Interpretation

Register online: extension.illinois.edu/4-h-jersey-county

See Jersey County 4-H Show Book for complete guidelines.

Must be a current 4-H member, enrolled in public presentations to participate.



April 2021

extension.illinois.edu/cjmm/4-h-jersey-county

NATURE EXPLORERS SPIN CLUB

Get ready to go outside and learn about our natural world using easy lessons and activities to explore the great outdoors!

TOPICS:

Outdoor Adventures
Forests
Wildlife
Weather
Geology
Pollinators

REGISTER AT
GO.ILLINOIS.EDU/NATURESPIN

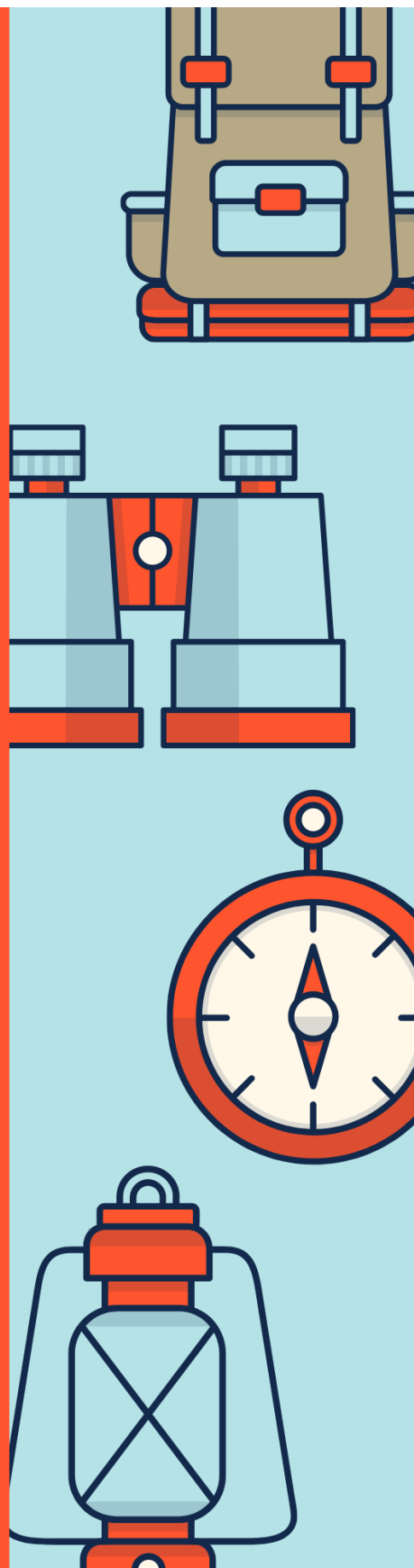
Once you sign up, a packet with activities & supplies will be available to pick-up at the Extension Office. This club will be self-paced for participants to complete on their own.

If you have any questions, please contact
Beth Groves at egroves@illinois.edu.

**Illinois
Extension**



COLLEGE OF AGRICULTURAL, CONSUMER & ENVIRONMENTAL SCIENCES
University of Illinois | U.S. Department of Agriculture | Local Extension Councils Cooperating
If you need reasonable accommodation to participate in this program, please contact 217-532-3941.
Early requests are strongly encouraged to allow sufficient time for meeting your access needs.



Jersey County 4-H 2021 Show Dates

TENATIVE DATES

All 2021 show dates are subject to change

Public Speaking Contest

April 29 at 6 p.m. - Extension Office

Unit 18 Horse Show

June 12 at 9 a.m. - Gillespie Lake Horse Arena

Cat and Dog Show

July 9 at 6 p.m. - Fairgrounds Pavilion

Rabbit Show

July 10 at 8 a.m. - Fairgrounds Show Arena

Poultry Show

July 10 at 10 a.m. - Fairgrounds Show Arena

General Show

July 10 at 4 p.m. - Exhibition Building

Livestock Weigh-In

July 11 at 1 p.m. - Fairgrounds Show Arena

Master Showmanship

July 11 at 5 p.m. - Fairgrounds Show Arena

Swine Show

July 12 at 8 a.m. - Fairgrounds Show Arena

Sheep Show

July 12 Immediately following Swine Show - Fairgrounds Show Arena

Goat Show

July 12 Immediately following Sheep Show - Fairgrounds Show Arena

Beef Show

July 12 at 12:30 p.m. - Fairgrounds Show Arena

Livestock Auction

July 12 at 7 p.m. - Fairgrounds Show Arena



April 2021

extension.illinois.edu/cjmm/4-h-jersey-county



Use robotics to tell your story in the 2021 Illinois 4-H State Robotics Challenge!

This year's team-based challenge will be virtual, and each submission will be evaluated on Story, Table Performance, and Technical/Design during summer judging sessions with winners announced at a Virtual Awards Ceremony on July 2nd.

Register now through April 30: <https://go.illinois.edu/4HR2021>

For details about the challenge, and other FAQs head here: <https://go.illinois.edu/2021CHALLENGE>

Host an international student: Host a Japanese youth this summer through States' 4-H International! Expand your family's cultural understanding, learn about new foods and customs, and possibly learn a new language all while sharing your own. Your children will build lifelong friendships and will gain new perspectives on their own country, too!

SCHEDULE: Hosting takes place mid-July through mid-August.

REQUIREMENTS:

- Families hosting a youth must have a child the same gender and approximate age (12-18) as the incoming youth.
- Youth must have a separate bed; a separate room is not required.
- Host family selection is dependent on completion of an application and screening process, as well as student availability and personality compatibility.

RECRUITMENT PERIOD: January- May or until all placements are made

Apply Today <https://www.states4hexchange.org/apply/host/>



Illinois 4-H Special Offer: Become an Illinois RiverWatch citizen scientist!

With one paid adult, two 4-H youth may attend one of 14 different statewide workshops free of charge. During this 6-8 hour training, volunteers are taught to identify over 30 different organisms using a stereoscope. During the field training session, participants visit a local stream, where the Trainer demonstrates proper monitoring techniques and explains how to complete the data sheets. Additional information about RiverWatch is available at: <http://www.ngrrec.org/Riverwatch/>.



April 2021

extension.illinois.edu/cjmm/4-h-jersey-county

NEW 4-H Bass Fishing SPIN Club curriculum ready to go!

To the first 20 adult volunteer 4-H leaders that respond.....start up a new 4-H Bass Fishing SPIN Club and I'll mail you a kit of supplies that will allow you to complete all six of the fun activity lessons in this new curriculum! Each kit will supply up to ten 4-H youth with the learning supplies they need.

Want to look at the curriculum first? Find it on the Illinois 4-H Project page website at: <https://4h.extension.illinois.edu/members/projects/nature-fishing-and-wildlife>

Contact Curt Sinclair at sinclair@illinois.edu to submit a request!

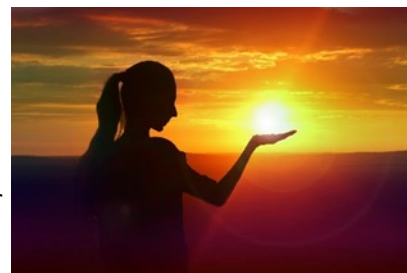


Solar Activity Kits

Free: Six **SOLAR ACTIVITY KITS from Recharge Labs** available on first come/first served basis. 2 per Region.

Funded by the **Energy Education Council**, six kits are available for your club or classroom programs on renewable energy. Youth build solar a powered fountain; model solar homes; and play scavenger hunt games experimenting with solar energy. Did you struggle with the Junior Solar Sprint solar car building activity but like the subject? Start here instead. Kits are valued at \$275 each and serve up to 20 youth. Reusable supplies!

Contact Curt Sinclair at sinclair@illinois.edu to request a kit.



March starts Barred Owl nesting season!

Remind your 4-H families to be checking on their nest boxes! Reporting can be made back directly to Curt Sinclair at sinclair@illinois.edu.

We will be using the NestWatch check data sheet developed by The Cornell Lab of Ornithology https://nestwatch.org/wp-content/uploads/2017/11/DataSheet_20171103.pdf to record our Barred Owl citizen science data.

Registration Open: 4-H Shooting Sports Adult Certification Field Day Trainings

Two 4-H leader certification trainings are scheduled for June and July. Shotgun, Rifle, Archery, Pistol, Hunting/Outdoor Skills, and Coordinator disciplines offered. These are one-day only!

- June 5, 2021 at 4-H Memorial Camp, Monticello, IL (central IL)
- July 24, 2021 at Gardner Camp, Hull, IL (western IL)

Contact your local Extension Office for registration information. <https://4h.extension.illinois.edu/programs/shooting-sports/4-h-shooting-sports-volunteers>

Questions? Contact Curt Sinclair at sinclair@illinois.edu



April 2021

extension.illinois.edu/cjmm/4-h-jersey-county

Volunteer Opportunities



Illinois 4-H Making a difference

Inviting 4-H members and clubs to be part of the 2021 True Leaders in Service: National 4-H Day of Service event on April 24th as they support the people around them and the communities they live in! Use the link below to find out about two opportunities to join statewide efforts to advocate for others, making a difference in your community!

Registration opens 3/18:

<https://web.extension.illinois.edu/registration/default.cfm?RegistrationID=23183>

4-H Volunteer Training Opportunity – Thursday, April 22; 7 PM

Join this training on the Illinois 4-H Cloverbud program to learn how to support 4-H learning experiences for youth in the 5-7 year age group. Cloverbuds is an exciting entry point to 4-H for youth you don't want to miss! Use this link to find out more about this training and to register:

Registration opens 3/17:

<https://web.extension.illinois.edu/registration/default.cfm?RegistrationID=23352>

ILLINOIS 4-H



VOLUNTEER DEVELOPMENT



Join us for 4-H Volunteer
Café Conversations
Thursday, May 20, 7 PM

4-H Volunteer Café Conversation - Thursday, May 20; 7 PM

Use the link below to register (registration opens 3/18):

<https://web.extension.illinois.edu/registration/default.cfm?RegistrationID=22738>

Remember – 4-H volunteers and members in leadership roles who participate in 75% (3 of the 4) Volunteer Café Conversations will receive their very own limited edition 4-H Volunteer Café Conversations Ceramic mug!