



# 4-H FAST FACTS



A Newsletter for **Jersey County 4-H Families**

June 2020

## Virtual 4-H Show Announcement & Registration Process



On June 1st, all 4-H members and families received communication from Dr. Lisa Diaz, Illinois State 4-H Program Leader, announcing that all in-person events sponsored by Illinois Extension through July 5 will be canceled or moved to an online format. This includes all 4-H club meetings, events, and summer exhibit opportunities. Both the Christian and Jersey County 4-H programs and their summer shows are affected by this announcement and are adapting their judging experiences accordingly.

### 2020 Virtual 4-H Show Information

For this year's 4-H shows, we will be using the online Fair Entry system – which has been used to register for the 4-H shows for the past few years. Members will still register for the proper classes as usual. For the virtual show, each entry will also include pictures, videos or documents of your project for the judge to review. These MUST be uploaded during the registration/entry process. Instructions are included to guide you through entering your projects and uploading the proper documents for each. Also included is a list of picture requirements for uploading during registration.

An overview of the proposed timeline for entry and judging is included below:

- July 3 - 8 – Fair Entry will open for members to enter the projects AND supporting documents (pictures, videos, etc.)
- July 13 - 17 – Judges will review and give feedback to projects within the Fair Entry system.
- By July 24 – Results will be released and state fair delegates and alternates will be notified.

### Livestock-Specific Show Information

All June 2020 4-H livestock and other live animal exhibits are also being moved to a virtual format. Livestock entries will still register for the appropriate classes and shows as outlined in the show book through the Fair Entry system. In order to capture the animal and its movements, we hope that members can 'show' their animals at home, capture it on video, and submit these videos along with their online entries. More details surrounding specifics for livestock shows, requirements, and updated deadlines will be shared separately in the near future.

**Please reach out if you have any additional comments or questions.**

*Sara Marten*

Extension Educator, 4-H Youth Development

## UNIT 18 - Serving:

**Christian, Jersey,  
Macoupin &  
Montgomery Counties**

### OFFICES

#### **Christian County Extension**

1120 N. Webster Street  
Taylorville, IL 62568

Ph.: 217-287-7246 Fax: 217-287-7248

#### **Jersey County Extension**

201 West Exchange, Suite A  
Jerseyville, IL 62052

Ph.: 618-498-2913 Fax: 618-498-5913

#### **Macoupin County Extension**

#60 Carlinville Plaza  
Carlinville, IL 62626

Ph.: 217-854-9604 Fax: 217-854-7804

#### **Montgomery County Extension**

#1 Industrial Park Drive  
Hillsboro, IL 62049

Ph.: 217-532-3941 Fax: 217-532-3944

### STAFF

Amanda Cole, County Director  
amandac@illinois.edu

Sara Marten,  
4-H Youth Development Educator  
marten1@illinois.edu

Jessica Jaffry, Jersey County  
4-H Program Coordinator  
jjaffry@illinois.edu

Kate Harding, Macoupin County  
4-H Program Coordinator  
harding@illinois.edu

Elisha Hughes, Montgomery County  
4-H Program Coordinator  
ehugh2@illinois.edu

To keep up with 4-H happenings in Jersey County, including workshops, check us out on Facebook at

<https://www.facebook.com/jersey4h>



**I ILLINOIS**  
Extension



COLLEGE OF AGRICULTURAL, CONSUMER  
& ENVIRONMENTAL SCIENCES

[extension.illinois.edu/cjmm/4-h-jersey-county](https://extension.illinois.edu/cjmm/4-h-jersey-county)



## VIRTUAL SHOW BOOK NOW AVAILABLE!

An updated show book is available on the Jersey County 4-H website. A copy of the virtual show book will also be sent to each 4-H family in their show packet.

Virtual Show book: <https://extension.illinois.edu/sites/default/files/cimmjerseyvirtualshowbook.pdf>



## MEMBER RESOURCES

Check the Jersey County 4-H website for tip sheets, directions for uploads and more helpful tools.



## PUBLIC SPEAKING CONTEST

The 2020 Jersey County 4-H public speaking contest has been moved virtually. Information for speech guidelines, rules and tips can be found in the updated Virtual Show Book.



## MEMBER AND FAMILY TRAINING

Fair Entry training for members and families will be provided via Zoom on Wednesday, June 23 at 7 p.m. Families will be given a walk through of the Fair Entry program and be able to ask questions. If you are unable to attend the live training, the session will be recorded for future viewing. A zoom invitation will be sent to families using the family email in 4honline.



Please update your member's t-shirt size in 4honline. Members who exhibit virtually this year will receive a t-shirt!

# 4-H FAST FACTS

June 2020

**I** ILLINOIS

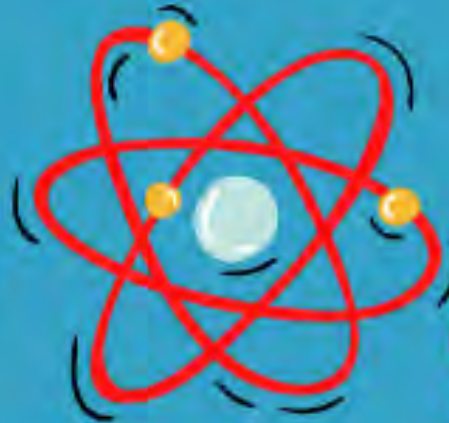
Extension

COLLEGE OF AGRICULTURAL, CONSUMER  
& ENVIRONMENTAL SCIENCES



*extension.illinois.edu/cjmm/4-h-jersey-county*

## 4-H SCIENCE CAMP



### VIRUS SCIENCE

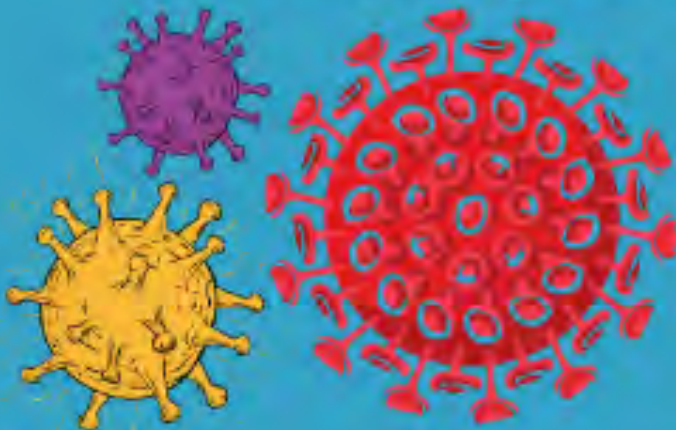
Tuesday, July 14

10:00 - 11:00 AM

Held online via Zoom

For ages 13-18

**Learn about what a virus is and how we can keep ourselves healthy!**



Register online at  
[go.illinois.edu/cjmm](http://go.illinois.edu/cjmm) or call  
Montgomery County Extension  
Office at 217-532-3941.

Can't attend the live session?  
You can still register and we will  
email you a packet!

**I** ILLINOIS

Extension

COLLEGE OF AGRICULTURAL, CONSUMER  
& ENVIRONMENTAL SCIENCES



COLLEGE OF AGRICULTURAL, CONSUMER & ENVIRONMENTAL SCIENCES  
University of Illinois | U.S. Department of Agriculture | Local Extension Council's Cooperating  
If you need reasonable accommodation to participate in this program, please contact 217-532-3941.  
Early requests are strongly encouraged to allow sufficient time for meeting your access needs.

# 4-H FAST FACTS

June 2020

**I** ILLINOIS

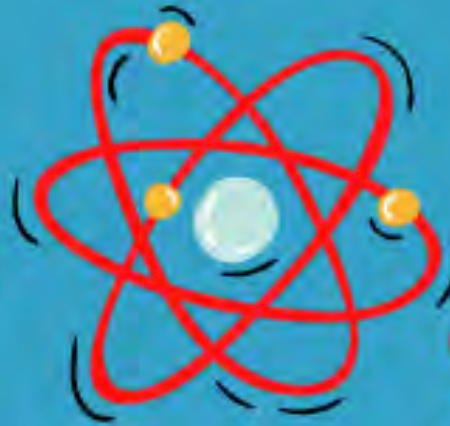
Extension

COLLEGE OF AGRICULTURAL, CONSUMER  
& ENVIRONMENTAL SCIENCES



*extension.illinois.edu/cjmm/4-h-jersey-county*

## 4-H SCIENCE CAMP



### **SIMPLE KITCHEN SCIENCE**

**Wednesday, July 15**

**10:00 - 11:00 AM**

**Held online via Zoom**

**For ages 8-12**

**Use some everyday kitchen items to  
learn about chemistry and  
simple science!**



**Register online at  
[go.illinois.edu/cjmm](http://go.illinois.edu/cjmm) or call  
Montgomery County Extension  
Office at 217-532-3941.**

**Can't attend the live session?  
You can still register and we will  
email you a packet!**

**I** ILLINOIS

Extension

COLLEGE OF AGRICULTURAL, CONSUMER  
& ENVIRONMENTAL SCIENCES



COLLEGE OF AGRICULTURAL, CONSUMER & ENVIRONMENTAL SCIENCES  
University of Illinois | U.S. Department of Agriculture | Local Extension Council's Cooperator  
If you need reasonable accommodation to participate in this program, please contact 217-532-3941.  
Early requests are strongly encouraged to allow sufficient time for meeting your access needs.

# 4-H FAST FACTS

June 2020

**I** ILLINOIS  
Extension  
COLLEGE OF AGRICULTURAL, CONSUMER  
& ENVIRONMENTAL SCIENCES



*extension.illinois.edu/cjmm/4-h-jersey-county*



## Illinois 4-H Making a Difference in Local Communities!

The *True Leaders in Service*, designated day of service may have passed however we are asking Illinois 4-H Clubs to keep the momentum going as they continue to focus on the 4<sup>th</sup> “H” and pledge their HANDS to larger service! Even though Illinois has moved into the Phase 3, the *Recovery* stage of the COVID-19 response, communities are still in need of support. **To meet this need we are extending the timeline for 4-H Clubs to go through July 31, 2020!**

Illinois 4-H’ers have been collaborating virtually as they collected and donated food to stock the shelves at local food pantries experiencing greater needs; making cards, videos, and encouraging yard signs to support vulnerable populations including shut-ins and senior center residents; and they have put their sewing skills to work as they made face masks which were distributed at medical facilities; local businesses; and in communities.

Find resources and the link to register your plan for service outreach at <https://4h.extension.illinois.edu/clubs>. The goal of the 4-H True Leaders in Service outreach is to encourage 4-H members in every county to make a positive difference. Service projects can be done by individuals, by 4-H clubs, or as a countywide service project. No matter what the project is, this is your time to make a difference!

**The 4-H Everyday Sportsman’s Skills Challenge** is currently underway and runs continuously until July 15, 2020. Interested 4-H Members are presented with three sportsman’s skills at a time which they learn by viewing suggested videos. Once they’ve mastered the skills, they contact their 4-H leader or 4-H staff person to communicate what they’ve learned. Each skill level mastered gets the 4-H member entered into a drawing for a high quality multi-tool sponsored by Illinois Pheasants Forever. Click here for details: <https://4h.extension.illinois.edu/events/4-h-everyday-sportsmans-skills-challenge>



**ONLINE**  
LEARNING FOR ILLINOIS

**I** ILLINOIS  
Extension

COLLEGE OF AGRICULTURAL, CONSUMER, AND ENVIRONMENTAL SCIENCES

## Extension webinars being offered

University of Illinois Extension helps individuals, families, farmers, businesses, and communities solve local problems to improve lives of Illinois residents. Check out the list of online webinars and trainings at <https://extension.illinois.edu/global/webinars>.

# 4-H FAST FACTS

June 2020

*extension.illinois.edu/cjmm/4-h-jersey-county*

**I ILLINOIS**  
Extension  
COLLEGE OF AGRICULTURAL, CONSUMER  
& ENVIRONMENTAL SCIENCES



## Are you a 4-H Senior?

We are proud of your accomplishments! While this year may not have been how you planned to end your Senior year, you have persevered! We want to celebrate your accomplishments with you!

We are seeking 4-H Seniors to complete the **4-H Senior Survey** ([https://illinoisaces.co1.qualtrics.com/jfe/form/SV\\_5itG50fd6fLrZQx](https://illinoisaces.co1.qualtrics.com/jfe/form/SV_5itG50fd6fLrZQx)) This survey is designed for graduating seniors to share about your experiences in 4-H, tell us about your career path and if 4-H influenced your school or career decisions.

Seniors participating in the 4-H Senior Survey will receive a 4-H graduation tassel as a memorabilia item to remember your time in the Illinois 4-H program. This 4-H tassel will be a special gift from Illinois 4-H as a token to celebrate your successes.

As you complete your 4-H career, you will also have an opportunity to join the Illinois 4-H Alumni Association. The Illinois 4-H Alumni Association is launching to stay connected to you! We want to see where your go, what successes continue to unfold and to create a lifelong connection between **YOU** and **Illinois 4-H**. We hope one day you will return as a volunteer or even as a 4-H parent.



## Collecting Food Access Stories

The Illinois 4-H State Office is putting a call out for stories that highlight the creative, innovative, and inspiring work that 4-H youth are doing to respond to the COVID-19 crisis. If you have a young person or a club in your area that is going out of their way to create greater food security and food access through service learning projects, advocacy, social media campaigns, or community service, we want to hear about them and help their work get highlighted by the U of I College of ACES Extension communication team. Please send a brief description of their project, a contact, and a photograph (where possible) of their work to [mbbecker@illinois.edu](mailto:mbbecker@illinois.edu). Thank you for all the important work you're doing to support our young people.

## 4-H Maker Monday Series



Maker Mondays is a YouTube Segment featuring the Illinois 4-H STEM Team, that guides youth through the process of designing, fabricating, and finishing anything we can think of, from co-splay inspired outfits, to custom themed drones and gadgets. These videos are designed to inspire and encourage youth to expand their imaginations, and build/make whatever they can think of. Our videos are not meant to transform youth into content experts, but rather into process experts with the tools and skills needed to find the answers to questions they have. Every video lists the materials and tools needed, and many videos will have accompanying downloads. In our first video, we make Mandalorian Armor from scratch using basic tools and a 3D printer!

Click the link below to view: <https://www.youtube.com/watch?v=P7hhXcl-6fQ&feature=youtu.be>

# 4-H FAST FACTS

June 2020



*extension.illinois.edu/cjmm/4-h-jersey-county*



Are you a 4-H Alumni? We want to stay connected to you!

The Illinois 4-H Alumni Association is building a network of 4-H alumni to join the alumni association.

Sign up today for your free membership: <https://go.illinois.edu/4halum>

(use logo Join 4-H Alumni)

Follow the Illinois 4-H Alumni Association on Social Media.

We want to stay connected to you !

**Linked In:** <https://go.illinois.edu/LinkedIn4HALumni>

**Facebook:** <https://www.facebook.com/groups/il4halumni/>

**Twitter:** <https://twitter.com/IL4halumni>

**Instagram:** <https://www.instagram.com/il4halumni/>



Do you have news or life changes to share?

We want to hear from you! Do you have news to share with the Illinois 4-H Alumni Association?

Moved - New Address? Did you get a new job? Married?

Promotion? New Baby? A recent death of a 4-H alum?

We would love to hear your updates and stay connected!

<https://go.illinois.edu/4HALumniNews>