



# 4-H FAST FACTS



A Newsletter for **Jersey County** 4-H Families

May 2021

## 2021 Public Speaking Contest

Congratulations to our participants and a special thank you to our judge Kaci Geisler!

Christian Johnson— Illustrated Speech—State Fair Delegate

Dinah Slusser—Formal Speech—State Fair Alternate

Lola Reed and Daphne Slusser—Team Oral Interpretation—State Fair Delegates

Lydia Reed—Oral Interpretation—State Fair Delegate



### UNIT 18 - Serving:

*Christian, Jersey,  
Macoupin &  
Montgomery Counties*

#### OFFICES

##### **Christian County Extension**

1120 N. Webster Street  
Taylorville, IL 62568  
Ph.: 217-287-7246 Fax: 217-287-7248

##### **Jersey County Extension**

201 West Exchange, Suite A  
Jerseyville, IL 62052  
Ph.: 618-498-2913 Fax: 618-498-5913

##### **Macoupin County Extension**

#60 Carlinville Plaza  
Carlinville, IL 62626  
Ph.: 217-854-9604 Fax: 217-854-7804

##### **Montgomery County Extension**

#1 Industrial Park Drive  
Hillsboro, IL 62049  
Ph.: 217-532-3941 Fax: 217-532-3944

#### STAFF

Amanda Cole, County Director  
amandac@illinois.edu

Sara Marten,  
4-H Youth Development Educator  
marten1@illinois.edu

Jessica Jaffry, Jersey County  
4-H Program Coordinator  
jjaffry@illinois.edu

Kate Harding, Macoupin County  
4-H Program Coordinator  
harding@illinois.edu

Elisha Hughes, Montgomery County  
4-H Program Coordinator  
ehugh2@illinois.edu

To keep up with 4-H happenings in Jersey County, including workshops, check us out on Facebook at <https://www.facebook.com/jersey4h>



Like us on  
**Facebook**



**Illinois Extension**  
UNIVERSITY OF ILLINOIS URBANA-CHAMPAIGN

[extension.illinois.edu/cjmm/4-h-jersey-county](https://extension.illinois.edu/cjmm/4-h-jersey-county)



May 2021

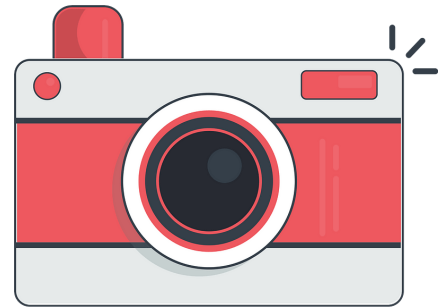
*extension.illinois.edu/cjmm/4-h-jesrey-county*

## **DON'T FORGET!!**

To submit program pictures and fill out surveys for program feedback!

Pictures: [go.illinois.edu/cjmmphotos](http://go.illinois.edu/cjmmphotos)

Survey: [go.illinois.edu/4-Hevals](http://go.illinois.edu/4-Hevals)



4-Hers that showed at 2020 Virtual 4-H Shows - you will be receiving your 4-H premium check in the mail! Please work to get them cashed as soon as possible!

Fair Entry opens May 17. Register the projects you will be exhibiting at the 4-H shows using Fair Entry. Instructions for registering projects in Fair Entry will be sent via email the week before. Project registration will close on June 18.

[www.fairentry.com](http://www.fairentry.com)



Fair Clean Up will be on Thursday, July 8 at 8:30 a.m.

Help us clean and set up prior to the 4-H shows!



**May 2021**

***extension.illinois.edu/cjmm/4-h-jersey-county***

## May Member Meeting

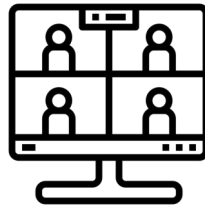
Have you been unable to make it to a club meeting? Do you still need to attend a club meeting and complete your club talk/demonstration? Join us for a May club meeting.

Register online:

<https://web.extension.illinois.edu/registration/>

RegistrationID=23508

Email Jessica at [jjaffry@illinois.edu](mailto:jjaffry@illinois.edu) for questions.



## 4-H GRAB AND GO ARTKITS



Christian, Jersey, Macoupin, and Montgomery 4-H

Reserve One:  
<https://extension.illinois.edu/cjmm>



- Beadwork
- Duct Tape Art
- Recycled Art
- Paper Craft
- Fiber
- Painting

Kits available from local Extension office starting May 24

**Illinois Extension**

## NATURE EXPLORERS SPIN CLUB

Get ready to go outside and learn about our natural world using easy lessons and activities to explore the great outdoors!

Best suited for ages 7-14

### \*UPDATE\*

We have run out of fully-supplied kits but will be offering packets with all printed activity instructions and list of supplies for you to purchase on your own.

**REGISTER AT**  
**GO.ILLINOIS.EDU/NATURESPIN**

Packets will be mailed to you at the address you give on or after May 15. Limited number of packets available. Please limit one per family.

**Illinois  
Extension**



COLLEGE OF AGRICULTURAL, CONSUMER & ENVIRONMENTAL SCIENCES  
University of Illinois | U.S. Department of Agriculture | Local Extension Councils Cooperating  
If you need reasonable accommodation to participate in this program, please contact 217-243-3841.  
Early requests are strongly encouraged to allow sufficient time for meeting your access needs.



## Rabbit Workshop



JERSEY COUNTY 4-H



**SATURDAY, MAY 8, 2021**

**2 P.M.**

**JERSEY COUNTY FAIRGROUNDS**

Learn grooming tips and practice showmanship techniques for the upcoming 4-H shows

Register online:  
[extension.illinois.edu/cjmm](https://extension.illinois.edu/cjmm)



**Illinois  
Extension**

COLLEGE OF AGRICULTURAL, CONSUMER & ENVIRONMENTAL SCIENCES  
University of Illinois | U.S. Department of Agriculture | Local Extension Councils Cooperating  
If you need reasonable accommodation to participate in this program, please contact 618-498-2913.  
Early requests are strongly encouraged to allow sufficient time for meeting your access needs.

May 2021

*[extension.illinois.edu/cjmm/4-h-jersey-county](https://extension.illinois.edu/cjmm/4-h-jersey-county)*



## Candy Company

LEARN HOW TO DEVELOP AND RUN A  
SUCCESSFUL COMPANY

COST  
\$10

SESSIONS WILL BE HELD ON  
TUESDAYS, JUNE 1 - JUNE 22  
2 - 3 P.M.

AGES  
8-18

SESSIONS 1-3 WILL TAKE PLACE VIA ZOOM. THE  
FINAL SESSION WILL BE IN PERSON AT THE  
MACOUPIN COUNTY EXTENSION OFFICE

REGISTER ONLINE AT:  
[HTTPS://EXTENSION.ILLINOIS.EDU/CJMM](https://extension.illinois.edu/cjmm)



**Illinois  
Extension**

COLLEGE OF AGRICULTURAL, CONSUMER & ENVIRONMENTAL SCIENCES  
University of Illinois | U.S. Department of Agriculture | Local Extension Councils Cooperating  
If you need reasonable accommodation to participate in this program, please contact 618-498-2913.  
Early requests are strongly encouraged to allow sufficient time for meeting your access needs.

## 4-H JUNIOR SCIENCE CAMP



### FORENSIC SCIENCE

**Wednesday, June 30**

**9:30 – 11 AM**

**LOCATION: TBA**

**For ages 8-11**

**Cost \$5** (fee waivers available)



**Learn about finger printing, blood typing, and more forensic science principles as you discover clues and solve a mystery!**



**Register online at [go.illinois.edu/cjmmjrscience](http://go.illinois.edu/cjmmjrscience) or call Jersey County Extension Office at 618-498-2913.**



**Illinois Extension**  
UNIVERSITY OF ILLINOIS URBANA-CHAMPAIGN

COLLEGE OF AGRICULTURAL, CONSUMER & ENVIRONMENTAL SCIENCES  
University of Illinois | U.S. Department of Agriculture | Local Extension Councils Cooperating  
If you need reasonable accommodation to participate in this program, please contact 217-498-2913.  
Early requests are strongly encouraged to allow sufficient time for meeting your access needs.



May 2021

*[extension.illinois.edu/cjmm/4-h-jersey-county](http://extension.illinois.edu/cjmm/4-h-jersey-county)*

# 4-H SENIOR SCIENCE CAMP



## FORENSIC SCIENCE

**Wednesday, June 30**

**1 - 3 PM**

**LOCATION: TBA**

**For ages 12-14**

**Cost \$5 (fee waivers available)**

**Learn about finger printing, blood typing, and more  
forensic science principles as you discover clues  
and solve a mystery!**

.....  
**Register online at [go.illinois.edu/cjmmsrscience](http://go.illinois.edu/cjmmsrscience) or call  
Jersey County Extension Office at 618-498-2913.**



**Illinois Extension**  
UNIVERSITY OF ILLINOIS URBANA-CHAMPAIGN

COLLEGE OF AGRICULTURAL, CONSUMER & ENVIRONMENTAL SCIENCES  
University of Illinois | U.S. Department of Agriculture | Local Extension Councils Cooperating  
If you need reasonable accommodation to participate in this program, please contact 618-498-2913.  
Early requests are strongly encouraged to allow sufficient time for meeting your access needs.

May 2021

*[extension.illinois.edu/cjmm/4-h-jersey-county](https://extension.illinois.edu/cjmm/4-h-jersey-county)*



We would love to hear how 4-H has impacted your life!

Complete the 4-H Senior Survey by May 1 to receive a 4-H memorabilia tassel.

Complete the survey online: <https://go.illinois.edu/4hgradsurvey>

**Host an international student:** Host a Japanese youth this summer through States' 4-H International! Expand your family's cultural understanding, learn about new foods and customs, and possibly learn a new language all while sharing your own. Your children will build lifelong friendships and will gain new perspectives on their own country, too!

**SCHEDULE:** Hosting takes place mid-July through mid-August.

**REQUIREMENTS:**

- Families hosting a youth must have a child the same gender and approximate age (12-18) as the incoming youth.
- Youth must have a separate bed; a separate room is not required.
- Host family selection is dependent on completion of an application and screening process, as well as student availability and personality compatibility.

**RECRUITMENT PERIOD:** January- May or until all placements are made

**Apply Today** <https://www.states4hexchange.org/apply/host/>



**Registration Open: 4-H Shooting Sports Adult Certification Field Day Trainings**

Two 4-H leader certification trainings are scheduled for June and July. Shotgun, Rifle, Archery, Pistol, Hunting/Outdoor Skills, and Coordinator disciplines offered. These are one-day only!

- June 5, 2021 at 4-H Memorial Camp, Monticello, IL (central IL)
- July 24, 2021 at Gardner Camp, Hull, IL (western IL)

Contact your local U of I Extension Office for registration information.

<https://4h.extension.illinois.edu/programs/shooting-sports/4-h-shooting-sports-volunteers>

Questions? Contact Curt Sinclair at [sinclair@illinois.edu](mailto:sinclair@illinois.edu)



May 2021

*[extension.illinois.edu/cjmm/4-h-jersey-county](https://extension.illinois.edu/cjmm/4-h-jersey-county)*

## NEW 4-H Bass Fishing SPIN Club curriculum ready to go!

To the first 20 adult volunteer 4-H leaders that respond.....start up a new 4-H Bass Fishing SPIN Club and I'll mail you a kit of supplies that will allow you to complete all six of the fun activity lessons in this new curriculum! Each kit will supply up to ten 4-H youth with the learning supplies they need.

Want to look at the curriculum first? Find it on the Illinois 4-H Project page website at: <https://4h.extension.illinois.edu/members/projects/nature-fishing-and-wildlife>

Contact Curt Sinclair at [sinclair@illinois.edu](mailto:sinclair@illinois.edu) to submit a request!



## Barred Owl NestWatch 2021

Remind your 4-H families to be checking on their nest boxes! Reporting can be made back directly to Curt Sinclair at [sinclair@illinois.edu](mailto:sinclair@illinois.edu).

We will be using the NestWatch check data sheet developed by The Cornell Lab of Ornithology [https://nestwatch.org/wp-content/uploads/2017/11/DataSheet\\_20171103.pdf](https://nestwatch.org/wp-content/uploads/2017/11/DataSheet_20171103.pdf) to record our Barred Owl citizen science data.

## 4-H Family Camp | Experience the fun of summer camp right along with your kids!

Enjoy your own family cabin for a three-day, two-night retreat right in central Illinois. While at camp your family can swim, boat, shoot archery, climb the rock wall, make arts & crafts, fish, take hayrack rides, participate in S.T.E.M. activities, hike, make s'mores over a campfire, and so much more!

Ready to camp? Sign up for the June 6-8, June 18-20 or July 9-11 sessions at 4-H Memorial Camp in Monticello, IL here: <https://go.illinois.edu/4Hcamp21>



## 4-H Volunteer Café Conversation - Thursday, May 20 @ 7 PM



Register to participate in the **4-H Volunteer Café Conversations** Thursday, May 20 at 7pm. Volunteers meet to discuss topics of interest, share both ideas and challenges. Volunteers will gain access to tools & techniques to support their volunteer efforts, strengthening 4-H club and member learning experiences. Bring your ideas, questions, and since this is a Café Conversation, feel free to bring a snack!

Register at:

<https://web.extension.illinois.edu/registration/default.cfm?RegistrationID=22738>



May 2021

*[extension.illinois.edu/cjmm/4-h-jersey-county](http://extension.illinois.edu/cjmm/4-h-jersey-county)*



## Illinois 4-H is being asked for help with an important research project!

I-Pollinate is a citizen science initiative and will be offering \$100 to each of 54 small “study” gardens established by Illinois 4-H members this spring if they agree to report back on-line their observations of which annual, ornamental flowers pollinators prefer on their gardens. The task at hand though is to spread these gardens out statewide – so only one garden per county will be allowed until all 54 are registered. Leaders can apply for funding by completing a training and registering their garden. These are small garden plots with specific plants – literally only 4’ x 6’ in size.

A detailed training will open April 26<sup>th</sup>, and data collection won’t start until National Pollinator Week June 21<sup>st</sup> but I wanted to give you a teaser now! Be thinking of who to invite from your local areas! Along with the \$100 reimbursement for supplies and materials, 4-H members completing the reporting observations will receive an I-Pollinator Certificate; permanent sign for their garden; and an honorary pin! Good stuff for a future entomology project display!

This project is designed by Dr. Alex Harmon-Threatt of the UofI with the support of the Illinois Farm Bureau and Illinois extension. More information can be found at [ipollinate.illinois.edu](http://ipollinate.illinois.edu)

## Travel abroad with 4-H- Start planning now for a trip in 2022

Are you curious about daily life, culture, and youth programs in other countries? Travel abroad with 4-H and experience foreign countries for a month-long cultural immersion experience. Delegates live with volunteer host families and engage in experiential learning about a new way of life.

**TRAVEL PERIOD:** 4 –8 weeks

(dates vary by program June-August 2022)

**REQUIREMENTS:** Youth ages 12-18 (some programs 15-18)

**Cost:** \$2700-5000\* Based on previous years  
(price varies by year, program and length of stay)

**RECRUITMENT PERIOD:** September-November

<https://www.states4hexchange.org/apply/go-abroad/>



Costa Rica · Japan · Korea · Norway · Finland · Romania · Taiwan · Argentina

Costa Rica · Japan · Korea · Norway · Finland · Romania · Taiwan · Argentina (Country availability changes each year)

For more information, visit <http://www.states4hexchange.org> or contact us by email:

Miriam Rosenbohm at [rosenbohm07@comcast.net](mailto:rosenbohm07@comcast.net) or Elisha Hughes at [ehugh2@illinois.edu](mailto:ehugh2@illinois.edu)

<https://www.facebook.com/illinoisstates4hexchange/> Instagram [@states4hinternational](https://www.instagram.com/states4hinternational)

## mark your calendar!

### Jersey County 4-H 2021 Show Dates

---

#### TENTATIVE DATES

All 2021 show dates are subject to change

Public Speaking Contest

April 29 at 6 p.m. - Extension Office

Unit 18 Horse Show

June 12 at 9 a.m. - Gillespie Lake Horse Arena

Cat and Dog Show

July 9 at 6 p.m. - Fairgrounds Pavilion

Rabbit Show

July 10 at 8 a.m. - Fairgrounds Show Arena

Poultry Show

July 10 at 10 a.m. - Fairgrounds Show Arena

General Show

July 10 at 4 p.m. - Exhibition Building

Livestock Weigh-In

July 11 at 1 p.m. - Fairgrounds Show Arena

Master Showmanship

July 11 at 5 p.m. - Fairgrounds Show Arena

Swine Show

July 12 at 8 a.m. - Fairgrounds Show Arena

Sheep Show

July 12 Immediately following Swine Show - Fairgrounds Show Arena

Goat Show

July 12 Immediately following Sheep Show - Fairgrounds Show Arena

Beef Show

July 12 at 12:30 p.m. - Fairgrounds Show Arena

Livestock Auction

July 12 at 7 p.m. - Fairgrounds Show Arena