



# 4-H FAST FACTS



A Newsletter for **Jersey County** 4-H Families

**November 2021**

**UNIT 18 - Serving:**

**Christian, Jersey,  
Macoupin &  
Montgomery Counties**

## Calling all 4-H'ers



**Don't forget to submit your 4-H enrollment online at: [il.4honline.com](http://il.4honline.com)**

**For questions, email Jessica at [jjaffry@illinois.edu](mailto:jjaffry@illinois.edu)**

### OFFICES

**Christian County Extension**  
1120 N. Webster Street  
Taylorville, IL 62568  
Ph.: 217-287-7246 Fax: 217-287-7248

**Jersey County Extension**  
201 West Exchange, Suite A  
Jerseyville, IL 62052  
Ph.: 618-498-2913 Fax: 618-498-5913

**Macoupin County Extension**  
#60 Carlinville Plaza  
Carlinville, IL 62626  
Ph.: 217-854-9604 Fax: 217-854-7804

**Montgomery County Extension**  
#1 Industrial Park Drive  
Hillsboro, IL 62049  
Ph.: 217-532-3941 Fax: 217-532-3944

### STAFF

Lisa Peterson, Acting County Director  
[lap5981@illinois.edu](mailto:lap5981@illinois.edu)

Sara Marten,  
4-H Youth Development Educator  
[marten1@illinois.edu](mailto:marten1@illinois.edu)

Jessica Jaffry, Jersey County  
4-H Program Coordinator  
[jjaffry@illinois.edu](mailto:jjaffry@illinois.edu)

Kate Harding, Macoupin County  
4-H Program Coordinator  
[harding@illinois.edu](mailto:harding@illinois.edu)

Elisha Hughes, Montgomery County  
4-H Program Coordinator  
[ehugh2@illinois.edu](mailto:ehugh2@illinois.edu)

Alexis McDowell, Christian County  
4-H Program Coordinator  
[amcd06@illinois.edu](mailto:amcd06@illinois.edu)

To keep up with 4-H happenings in Jersey County, including workshops, check us out on Facebook at <https://www.facebook.com/jersey4h>



**Illinois Extension**  
UNIVERSITY OF ILLINOIS URBANA-CHAMPAIGN

[extension.illinois.edu/cjmm/4-h-jersey-county](http://extension.illinois.edu/cjmm/4-h-jersey-county)

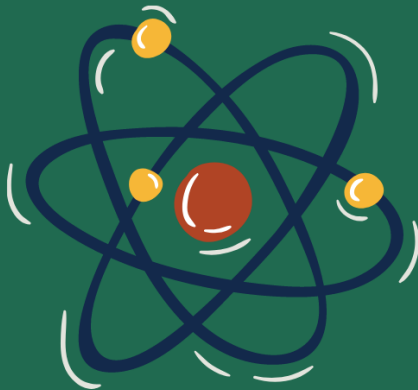
Jersey County 4-H Presents



# KITCHEN SCIENCE



**Illinois Extension**  
UNIVERSITY OF ILLINOIS URBANA-CHAMPAIGN



Thursday, November 11, 2021  
10 a.m. - 12 p.m.  
Jersey County Extension Office

Open to all youth ages 8 - 18  
FREE to attend!

For more information and to register visit:  
[go.illinois.edu/jerseykitchenscience](http://go.illinois.edu/jerseykitchenscience)

University of Illinois Extension provides equal opportunities in programming and employment.  
If you need reasonable accommodations to participate, please contact 618-498-2913.



## Volunteer Training

For 4-H volunteers serving Christian, Jersey, Macoupin & Montgomery Counties  
Each topic will be offered **IN PERSON** and **VIRTUALLY** - Can attend in any county or format



- Monday, October 25, 6:30-8:30 pm, Macoupin County Extension Office
- Tuesday, October 26, 6:30-8:30 pm, VIRTUAL
- Saturday, November 6, 10:00 am - noon, Christian County Extension Office

- Tuesday, November 9, 6:30-8:30 pm, Christian County Extension Office
- Wednesday, November 10, 6:30-8:30 pm, VIRTUAL
- Thursday, November 11, 6:30-8:30 pm, Jersey County Extension Office

- Tuesday, November 30, 6:30-8:30 pm, Montgomery County Extension Office
- Wednesday, December 1, 6:30-8:30 pm, VIRTUAL
- Thursday, December 2, 6:30-8:30 pm, Macoupin County Extension Office

Register online:  
[go.illinois.edu/cjmmvolunteertraining](http://go.illinois.edu/cjmmvolunteertraining)

Illinois Extension

# 4-H THANKFUL BASKETS



UNIT-WIDE COMMUNITY SERVICE

**THANKFUL 4 TEACHERS**

REGISTER TO BRING GREEN ITEMS FROM THE PROVIDED LIST TO YOUR LOCAL EXTENSION OFFICE NOV 1-17. ITEMS COLLECTED WILL BE GIVEN TO AREA TEACHERS AND SCHOOL STAFF!

Hosted by: Christian, Jersey, Macoupin, and Montgomery 4-H

Unit-Wide

Community Service

Activity



Illinois Extension  
UNIVERSITY OF ILLINOIS URBANA-CHAMPAIGN

# CANDY FUDGE

Take-Home Kit

-----  
Create holiday fudge with this simple take-home kit!



## Fudge Options

Pick One:  
Double Chocolate  
Vanilla



Cost: \$5

Ages 5-18

\*youth may require adult assistance\*

One kit per family

Register online by November 26 and pick up the week of December 6.

**Register at: [go.illinois.edu/cjmmcandykit](http://go.illinois.edu/cjmmcandykit)**



**Illinois Extension**  
UNIVERSITY OF ILLINOIS URBANA-CHAMPAIGN

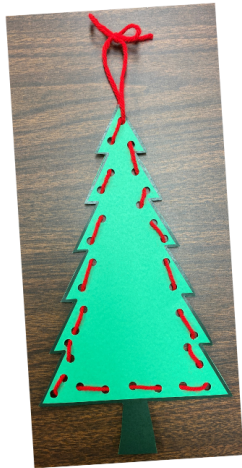
University of Illinois Extension provides equal opportunities in programming and employment. If you need reasonable accommodations to participate, please contact 618-498-2913.



## HOLIDAY ORNAMENT KIT



CHRISTIAN, JERSEY, MACOUPIN, MONTGOMERY 4-H



# Practice your sewing skills!

Reserve a kit at: [go.illinois.edu/HolidayOrnaments](http://go.illinois.edu/HolidayOrnaments)

Kits will be available at the Extension Office beginning Dec. 6.  
Please contact your Extension Office to arrange pick-up!



**Illinois Extension**  
UNIVERSITY OF ILLINOIS URBANA-CHAMPAIGN

University of Illinois Extension provides equal opportunities in programming and employment.  
If you need reasonable accommodations to participate, please contact 217-287-7246.



### Need Publications??

Publications are optional, but a great educational resource to continue project learning all year long. Request publications for your 4-H project at the link below. Members are responsible for purchasing requested publications.

JERSEY COUNTY 4-H  
PRESENTS

# Holiday Craft Workshop

Create crafts for the upcoming  
holiday season



JUNIOR WORKSHOP (ALL YOUTH AGES 5-7)

DEC. 21, 2021 • 10-11:30 A.M.

SENIOR WORKSHOP (ALL YOUTH AGES 8-18)

DEC. 21, 2021 • 1-2:30 P.M.

**JERSEY COUNTY EXTENSION OFFICE**  
**REGISTER ONLINE: [EXTENSION.ILLINOIS.EDU/CJMM](http://EXTENSION.ILLINOIS.EDU/CJMM)**  
**COST: \$5**



## HOLIDAY BAKING

LEARN TO BAKE DELICIOUS CINNAMON ROLLS!

**DECEMBER 11**  
**10-11 A.M.**

**In-person session:** Held at the Extension office in Hillsboro

- Supplies will be provided.
- Everyone will go home with their bread dough to rise, roll out, and bake.
- Cost \$5.00

**Virtual session:**

- A list of supplies will be provided ahead of time so you can follow along.
- Cost: free

Register at: [go.illinois.edu/montgomeryco4h](http://go.illinois.edu/montgomeryco4h)  
Call for questions: 217-532-3941

**Illinois Extension**

University of Illinois Extension provides equal opportunities in programming and employment. If you need reasonable accommodations to participate, please contact 217-532-3941.



Christian, Jersey, Macoupin, and Montgomery County 4-H



## 4-H B&W HOLIDAY PHOTOGRAPHY CONTEST

Submit your digital black and white holiday photograph  
by Dec. 17 to [harding@illinois.edu](mailto:harding@illinois.edu).

### RULES:

Take a picture with a holiday theme. Must be in black and white!

Photograph must be taken by 4-H member.

2 Age Groups - Cloverbuds Age 5-7 & Age 8-18

Prizes for 1st, 2nd, and 3rd place for both age groups!

If taking 4-H Photography, use skills from the 4-H Photography Manual.

Questions should be directed to Kate at [harding@illinois.edu](mailto:harding@illinois.edu).

Winners announced and pictures displayed on county 4-H Facebook pages



**Illinois Extension**

November 2021

[extension.illinois.edu/cjmm/4-h-jersey-county](http://extension.illinois.edu/cjmm/4-h-jersey-county)



**"PLEDGE YOUR HEALTH TO BETTER LIVING"**

# 4-H VIRTUAL YOGA FOR KIDS



**TUESDAY, DEC. 14**

**4:00 - 4:30 P.M.**

**AGES 8-18**

**NO COST**



Register at: [go.illinois.edu/cjmmmyoga](http://go.illinois.edu/cjmmmyoga) or call 217-854-9604

**JOIN LISA KLAUS ON ZOOM FOR AN INTERACTIVE YOGA SESSION**

**Illinois  
Extension**

Open to 4-H members in Christian, Jersey, Macoupin and Montgomery Counties! If you would like to become a member and participate in this program, please contact us at [harding@illinois.edu](mailto:harding@illinois.edu).





Every November we celebrate the history, heritage, traditions, and culture of Native Americans, Alaska Natives, and Native Hawaiians. Stay tuned for ideas on how you and your club can help celebrate this month!

The State 4-H Office is offering in coordination with the Global 4-H Youth Committee for all 4-H'ers in Illinois.

We will be hosting a series of SPIN club meetings along with Brazil 4-H members and the Instituto Federal de Mato Grosso do Sul. Our club is called "Clube Solo Fértil" or Fertile Soil Club and will be an opportunity for young people in Brazil and the US to build cross cultural friendships while working together on issues related to Food Insecurity.

We have a limited number of spaces available, and so the application will ask for a reference to help us in our decision-making process. Many details of the club are addressed within the application itself.

Application link: <https://form.jotform.com/212786589776176>

- **Application Deadline: November 22nd**
- **2021 Dates: December 2nd and December 16th**
- **2022 Dates: TBD**
- **Hosted over Zoom**



Save the date! The State Public Speaking Contest will be held on April 30, 2022 with registrations due by April 8, 2022. More details to come and please contact Cindy Ogwal [cowusu@illinois.edu](mailto:cowusu@illinois.edu) for event questions.