

Macoupin County **Agricultural Literacy Newsletter**

Fall 2020

Teacher Training, Lesson Plans, Virtual Field Trips, and more

Illinois Agriculture in the Classroom continues to provide teacher training, lesson plans, virtual field trips, author visits and more at <https://beyondthebarndoor.wordpress.com>.

Pumpkins is the theme for October with pumpkin lessons, a virtual visit to a pumpkin farm, and Pick a Pumpkin author visit. Last month's apple themed activities, lessons, and field trips are available too.

Follow them on Facebook for all the latest releases including pumpkin scale family engagement challenge and pumpkin bread

family cooking challenge. A daily ag-cyclopedia post helps people learn about the meaning of agricultural terms. Each week they also share a Did Deeper book.

This site contains virtual field trips from the summer, Everyday Agriculture activities from the Spring, Scrambled States, and more.



Hands-on Resources & Virtual Classroom Programs Available

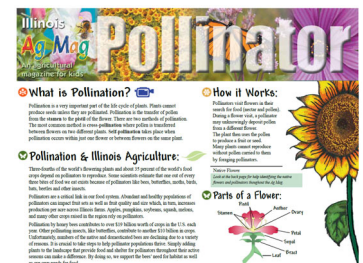
Our program continues to provide hands-on learning resources available on a free loan basis. Kit topics include apples, pumpkins, insects, plants, soils, dairy, poultry, pork, wheat, pizza, fibers, Illinois, farm fun, and machines. We also have the following kits from IDNR available Birds, Insects & Spiders, Pollinators, and Trees. Visit our web site to see descriptions of these resources.

Our program has virtual classroom visits with hands-on activities available on various topics. To learn more and schedule a visit, please contact Connie at cniemann@illinois.edu.

Ag Mags for Your Class: To assist you in exploring many topics, request a free classroom set of Ag Mags which are a 4-page, colorful

newspaper for students containing information, pictures, classroom activities, and agricultural careers. Interactive versions which provide links to other web sites to learn more, interviews, and lessons to further explore each topic are available at www.agintheclassroom.org. Contact Connie to request copies for your classroom.

Ag Mags currently available cover the following topics: apples, beef, careers, corn, dairy, horse, Illinois history, nutrition, pizza, pollinator, pork, poultry, pumpkins, renewable energy, seasons, soil, soybeans, urban, water, and wheat. Other Ag Mags available online but not currently in print include: horticulture, livestock, specialty crops, and tree at www.agintheclassroom.org.



Macoupin County **Agricultural Literacy Program**

#60 Carlinville Plaza • Carlinville, IL 62626

217-854-9604 • extension.illinois.edu/cjmm/agricultural-literacy

Connie Niemann
Agricultural Literacy Coordinator
cniemann@illinois.edu

Calendar Provides Reminder

The new Illinois Agriculture in the Classroom calendar provides a reminder that agriculture is everyday! Along with this newsletter you should have received a new classroom calendar featuring agricultural photos, facts, and recommended readings. Please be sure to save this calendar as it is part of a three year series to have the complete life cycle of these agricultural commodities.

Here are some ways educators have used this resource:

- Read fact as a part of daily routine.
- Use for writing or journaling ideas.
- Display in areas that students line up or visit daily so they can read it.
- Share along with daily school announcements.
- Use for bulletin boards - collect series and use both pictures and facts.
- Learn some new terminology each month.
- Utilize monthly topics to spur further exploration and activities.



Ag Readers

To assist you in exploring a variety of topics, these 4-page student readers contain information about each commodity, pictures, and agricultural careers. The following commodity readers are available: apples, beef, cooperatives, corn, cotton, dairy, horses, invasive species, pizza, pollinator, pork, poultry, pumpkins, renewable energy, sheep, soil, soybeans, specialty animals, water, and wheat.



To examine agriculture as it relates to Math, Science, Social Studies, Language and Writing these commodity readers and sample student questions have been developed and made available for teachers to print and implement. Designed to mirror the Terra Nova Test, these readers are a way to expose students to more non-fiction based texts. The questions can be answered using the text and are designed to take about 10 minutes per area.

The Readers can be downloaded in black & white or color from www.agintheclassroom.org. They can also be viewed on electronic devices.

Thank you, Program Sponsors!

Platinum Level (\$1,500 and up)

University of IL Extension - Macoupin County
Macoupin County Farm Bureau
Illinois Agriculture in the Classroom
M & M Service Company
Corteva Agriscience

Gold Level (\$500 - \$1,499)

Brandt Consolidated, Inc.
CHS - Shipman
Litchfield National Bank
Macoupin Co. Soil & Water Conservation Dist.
Sievers Equipment Company

Silver Level (\$250 - \$499)

CNB Bank & Trust
Prairie Farms Dairy, Inc.
Tina Olroyd-COUNTRY Financial® Representative
United Community Bank
Bank & Trust Company
Dan Metz-COUNTRY Financial® Representative
First National Bank of Litchfield
First National Bank of Raymond
JR Earley -COUNTRY Financial® Agency Mgr.
Plaza Truck Service & Equipment
Smoky Jennings Chevrolet, Inc.
Soil-Right Consulting Services, Inc.
Steven O'Dell-COUNTRY Financial® Representative
Warren Boynton State Bank

Bronze Level (\$100 - \$249)

Macoupin County Pork Producers
Duda Ace Hardware
First National Bank in Staunton
Mennel Milling Company of Illinois
Area Diesel Service, Inc.
Backwoods Berry Farm
Bill's IGA
Carlinville Rotary Club
Farm Credit Illinois - Jerseyville
Farmers State Bank of Medora
Holzwarth Flying Service
Karmak, Inc.
Linda Worlow, State Farm Insurance Agent
McKay NAPA Auto Parts
Prairie State Bank & Trust
The Scouler Company
Sloan Implement Company
Sonneborn Brothers
Sorrells Farm Supply, Inc.