



4-H FAST FACTS



A Newsletter for **Montgomery County 4-H Families**

November 2019

2019 4-H Week

UNIT 18 - Serving:
*Christian, Jersey,
Macoupin &
Montgomery Counties*



OFFICES

Christian County Extension
1120 N. Webster Street
Taylorville, IL 62568
Ph.: 217-287-7246 Fax: 217-287-7248

Jersey County Extension
201 West Exchange, Suite A
Jerseyville, IL 62052
Ph.: 618-498-2913 Fax: 618-498-5913

Macoupin County Extension
#60 Carlinville Plaza
Carlinville, IL 62626
Ph.: 217-854-9604 Fax: 217-854-7804

Montgomery County Extension
#1 Industrial Park Drive
Hillsboro, IL 62049
Ph.: 217-532-3941 Fax: 217-532-3944

STAFF

Amanda Cole, County Director
amandac@illinois.edu

Sara Marten,
4-H Youth Development Educator
marten1@illinois.edu

Jessica Jaffry, Jersey County
4-H Program Coordinator
jjaffry@illinois.edu

Kate Harding, Macoupin County
4-H Program Coordinator
harding@illinois.edu

Elisha Hughes, Montgomery County
4-H Program Coordinator
ehugh2@illinois.edu

To keep up with 4-H happenings in Montgomery County, including workshops, check us out on Facebook at
<https://www.facebook.com/montgomery4h>



I ILLINOIS
Extension



COLLEGE OF AGRICULTURAL, CONSUMER
& ENVIRONMENTAL SCIENCES

extension.illinois.edu/cjmm/4-hmontgomerycounty

4-H FAST FACTS

November 2019

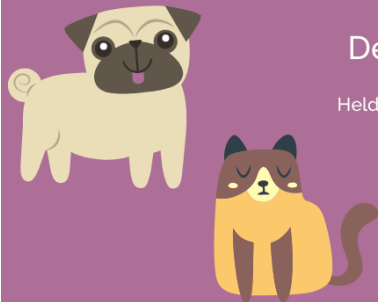
I ILLINOIS
Extension
COLLEGE OF AGRICULTURAL, CONSUMER
& ENVIRONMENTAL SCIENCES



extension.illinois.edu/cjmm/4-h-montgomery-county

Pet Treat Workshop

Bake for your own furry friends and those spending the holidays in a shelter.



December 7, 9-10am

Held at the Extension office in Hillsboro

Ages 5-10

Cost \$5

Registration:
<https://extension.illinois.edu/cjmm/4-h-montgomery-county>



4-H Card Making

Cost \$3



At the Montgomery County Extension

December 14

10 am- 11am

Ages 8-18

Register online

<https://extension.illinois.edu/cjmm/events>

Or Call 532-3941



CUP CAKE DECORATING

December 14, 9-10 am

Ages 8-18

Cost \$5

Learn piping techniques,
decorate your own holiday
cupcakes.

Registration:
<https://extension.illinois.edu/cjmm/4-h-montgomery-county>
or call 532-3941

RSVP Only!



2019

4-H ACHIEVEMENT PROGRAM

ACHIEVEMENT EVENT NOVEMBER 8, 2019



4-H FAST FACTS

November 2019



extension.illinois.edu/cjmm/4-h-montgomery-county



New certification required for youth exhibiting livestock

4-H members exhibiting animals entering the food production system will be required to complete the **Youth for the Quality Care of Animal certification (YQCA)**. It will replace former trainings: PQA and QAEC. This program is the industry-standard certification. Check with local offices about completing the training. **The training must be completed each year.**



Horses, dogs, and cats will still be required to take **the Quality Assurance and Ethics (QAEC)** training. This training is only required once in the member's career.



Change lives, be a 4-H camp counselor

It may be cooling off now, but summer will return, and we need you to help mentor the campers at 4-H Memorial Camp near Monticello. Applications will be available in January. We're looking for certified lifeguards and young adults interested in fishing, shelter building, tree and wildlife identification, and other outdoor adventures. We also need counselors interested in STEM programming. For information, contact Andy Davis @ ardavis1@illinois.edu or call 217-762-2741.

Take a trip across the globe

4-H is not only the largest youth development program in the United States. It is also in 60 countries around the world! Through this network, Illinois 4-H offers youth and their families an opportunity to think globally, grow in their cultural awareness, and gain knowledge about the world through international exchange programs that include both hosting and travelling abroad. These are coordinated in partnership with the States' 4-H International Exchange Program which works with Cooperative Extension programs across the nation. <https://www.states4hexchange.org/>.

Visit exciting new places as part of the 2020 States' 4-H International Exchange program. Check out this line-up:

Costa Rica: June 18 – July 17. Cost \$1,775 (plus airfare \$800 to \$1,300). Ages: 15 – 18.

Japan: July 8 – August 6. Cost \$2,725 (plus airfare \$1,700 to \$2,600). Ages: 12 – 18.

Japan: June 18 – August 6. Cost \$3,875 (plus airfare \$1,700 to \$2,600). Ages: 12 – 18.

Norway: June 24 – July 24. Cost \$2,200 (plus airfare \$1,300 to \$2,000). Ages 15 – 18.

South Korea: July 15 – August 13. Cost \$2,430 (plus airfare \$1,300 to \$2,300). Ages 12 – 18.

Taiwan: June 28 – July 28. Cost \$2,200 (plus airfare \$1,300 to \$2,300). Ages 12 – 18.

Romania: June 24 – July 24. Cost \$1,775 (plus airfare \$1,300 to \$2,000). Ages 15 – 18.



Applications are due in-state NOVEMBER 1. For information or to get an application, email Miriam Rosenbohm at rosenbohm07@comcast.net Late apps may be accepted until November 7

The first deposit and application are due December 1. Second deposit is due February 1. For more information, check out their website @ [states4hexchange.org/](https://www.states4hexchange.org/).

If you are interested in going abroad with 4-H in 2020 or 2021, contact Elisha Hughes to learn about scholarship and fundraising opportunities.

4-H FAST FACTS



November 2019

extension.illinois.edu/cjmm/4-h-montgomery-county

Get cash to help improve your community

Looking for funding support to conduct community service outreach in your community? Farm Credit Illinois is ready to help Illinois 4-H clubs and FFA chapters bring positive and visible change to Illinois communities! Fifty \$500 Community Improvement Grants are available. Clubs must be located in one of the 60 central and southern Illinois counties served by Farm Credit Illinois. Check if your club is eligible and apply after November 1 at farmcreditIL.com. **Be sure to contact your LOCAL EXTENSION OFFICE BEFORE applying for this grant to ensure you follow all fiscal requirements!**



Take the next step in your leadership journey

February 22 & 23 | Effingham, IL

You'll laugh. You'll make new friends. You'll even learn cool ideas to take back to your own 4-H Club at this year's Illinois 4-H Junior Leadership Conference. The conference is open to 4-H members in 7th and 8th grade. Registration will open in November at go.illinois.edu/4Hjlc. This year's conference will be held at the Holiday Inn in Effingham!

Here's help to pay for college

• FARM CREDIT ILLINOIS SCHOLARSHIPS

High school seniors planning careers in agriculture may apply for a \$2,000 scholarship. Farm Credit Illinois will provide 30 scholarships to youth who live or farm in one of the 60 counties in their service area. The first \$1,000 will be distributed for the Fall 2019 semester, and the second \$1,000 will be applied during the Fall 2021 semester. Apply online at farmcreditIL.com before March 1. Are going to University of Illinois College of Agricultural, Consumer, and Environmental Sciences? The college is MATCHING this scholarship, dollar for dollar! Double your money while getting a great ag education!



• TEACH OUTDOOR SCHOLARSHIP

A \$500 Scholarship will be awarded to a student who will be a freshman or sophomore in college or trade school during the 2020-2021 school year. Applicants must be a current high school or home school student. Applications are due January 1 and can be downloaded @ <http://www.teachoutdoors.org/scholarship.html>.

• JOYCE BETZ MEMORIAL SCHOLARSHIP

A \$1,000 Scholarship will be awarded to a 4-H member who will be a freshman or sophomore in college or trade school during the 2020-2021 school year. Applicants must be a current high school or home school student. Applications are due January 1 and can be downloaded @ <http://www.teachoutdoors.org/scholarship.html>. Joyce was a 4-H club leader in Will County.

4-H FAST FACTS

November 2019

I ILLINOIS
Extension
COLLEGE OF AGRICULTURAL, CONSUMER
& ENVIRONMENTAL SCIENCES



extension.illinois.edu/cjmm/4-h-montgomery-county



Find help for your projects

We have dozens of projects you can choose to take, and ways to help you learn! Check out the resources available @ <https://4h.extension.illinois.edu/project-resources>. Some are available from the county Extension office. Others you can order directly from Shop 4-H or other state Extension programs.

Give us a call if you have questions.

Create a winning video

The World of 7 Billion video contest challenges you to think critically about some of the planet's most pressing issues and to come up with solutions. Share what you've learned in a 60-second video. The contest is currently open for the 2019-2020 school year! The contest is open to all middle and high school students worldwide, and the deadline for submissions is February 27, 2020. Up to \$1,000 in cash prizes will be awarded to 80 student winners.



Understanding copyright and trademark laws

When an author, musician, designer, or artist creates something, it is immediately protected by copyright or trademark laws and other people can't use it or create something similar. Original works such as stories, music, pictures, plays, dances, sculpture, movies, and architecture are protected. 4-H members should use caution when working on a speech, display, or exhibit so you don't use something that doesn't belong to you.

4-H members can't draw or copy someone else's design, logo, words, or music without the permission of the original owner. That means, you can't draw a logo (such as Ford or John Deere) and use it on your exhibit. You can't create Mickey Mouse ears on your cake. You can't draw a Disney princess. You can't put a SpongeBob image on your natural resource project exhibit board.

Think of it like this. You wouldn't take your neighbor's bike and ride it around to make your life easier without getting permission first. That would be stealing. When you take words, art, graphics, or photographs that aren't yours but use them like they are, that's stealing, too. Copying them from the internet is the same as stealing them unless you are using a site specifically created for free use of images. For more information on what's allowed, contact Judy at illinois4H@illinois.edu and ensure you're respecting the rights of others.



Montgomery County 4-H Foundation supports members participating in 4-H events.

State Level and Beyond Rebate- Did you know that our 4-H Foundation offers a \$40 rebate each year to 4-H members attending state level 4-H events and beyond. To receive your rebate, you will need to fill out the rebate form located on our website under Awards/Scholarships. You may apply once a year for the rebate if you attended a state level or beyond 4-H event in which you had to pay a registration fee.

State Level and Beyond scholarship- For members with financial hardships that would hinder their participation in events with registration fees. To apply you must fill out the form which includes a small essay. After committee review, Scholarships will be awarded based on need and available funds.

Fee waivers for local events- It is our intention that all youth have the same opportunities in 4-H locally. If you are not able to pay for a local 4-H event, please fill out the fee waiver located on our website under awards/scholarship. We can waive the fee in most cases. When using a waiver, you must cancel 24 hours in advance if you are not able to attend.

4-H FAST FACTS

November 2019

I ILLINOIS
Extension
COLLEGE OF AGRICULTURAL, CONSUMER
& ENVIRONMENTAL SCIENCES



extension.illinois.edu/cjmm/4-h-montgomery-county



mark your calendar!



- November 8 Montgomery County Achievement Night RSVP only
- November 9 Speaking for Illinois 4-H Training, Adams County, Quincy
- November 14 4H Committee Meeting
- December 6 YLT meeting 6pm
- December 7 Pet treat workshop
- December 14 Cup Cake Decorating & Card Making workshops
- February 22-23 Junior Leadership Conference, Effingham
- March 14 2020 Awards Banquet by invitation
- June 18 – July 17 Outbound to Costa Rica
- July 8 – August 6 Outbound to Japan
- June 18 – August 6 Outbound to Japan
- June 21 – June 27 Illini Summer Academies
- June 24 – July 24 Outbound to Norway
- July 15 – August 13 Outbound to South Korea



SATURDAY, NOVEMBER 9 – Adams County Extension Office
9:30 A.M. Registration; 10:00 A.M. - 3:00 P.M. Training



The Illinois State 4-H Youth Leadership Team has designed *SFI4-H* to train 4-H members in advanced presentation skills and business etiquette to effectively promote the University of Illinois Extension 4-H Youth Development Program. The ultimate goal is to create a team of polished teen speakers across the state that can speak to civic groups, potential donors, and elected officials on the local, state, and federal level. Whether the topic is recruitment of potential 4-H volunteers, fund-raising, or budgets, we need 4-H members who are trained and qualified to share the 4-H vision and get the job done!



Current 4-H members, ages 14-18, *should let their local Extension office know* that they wish to register for the training. Training will focus on building a variety of presentation skills and help the member tell their 4-H Story in the most effective way possible to share with elected officials, donors, civic groups and similar audiences.



Youth must register on-line for training by November 1 for the November 9 training. Applications must be completed and forwarded to the State 4-H Office at that time. Registration for the training is \$12.00. (Any adults attending training for youth support are asked to register also and pay the fee to help cover the cost of lunch.)

Registration is now open!
Registration must be completed on-line: go.illinois.edu/sfi4H.

Help Your Local and State 4-H Program
Join the *SFI4-H* Team!



COLLEGE OF AGRICULTURAL, CONSUMER & ENVIRONMENTAL SCIENCES
University of Illinois | U.S. Department of Agriculture | Local Extension Councils Cooperating
University of Illinois Extension provides equal opportunities in programs and employment



BE PART OF THE CHANGE

4-H Committee

NOVEMBER 14

LIVESTOCK 6-6:30 P.M.
MAIN TOPICS 6:30-8:30 P.M.

Adults and 4-H Youth are invited to attend

This meeting will cover some very important topics, such as:

- 2020 Fair dates and locations
- 2020 Achievement awards
- Changes to the 4-H park Hog Barn

Meal will be provided
You must RSVP to ehugh2@illinois.edu

