



Workshop includes refreshments and handouts.

Fee: \$10

Register by March 13, 2023.
Advanced registration is required.
Space is limited.

Call 939-3434 or register online at <http://web.extension.illinois.edu/mms/>



***Interested in becoming a
Master Gardener or Master Naturalist?***

Master Gardeners are adult members of the local community who are interested in lawns, trees, shrubs, flowers, gardens, and the environment. Classroom training takes place January to April. Cost of the program is \$250 and includes training materials. Online training is offered throughout the year. Online training costs \$350 and includes training materials.

Master Naturalists are adult members of the local community who are interested in Illinois' natural history, environment, and conservation issues. Master Naturalist programs promote nature-based community service by citizen volunteers and provide continuing education opportunities. Training takes place from late August through November. Cost of the program is \$250 and includes training materials.

Contact the Extension Office for more info.
618-939-3434
ruth1@illinois.edu



Illinois Extension
UNIVERSITY OF ILLINOIS URBANA-CHAMPAIGN

University of Illinois ~ U.S. Department of Agriculture ~
Local Extension Councils Cooperating

University of Illinois Extension provides equal opportunities in
programs and employment.

If you need a reasonable accommodation to participate in this
program, please contact the Madison-Monroe-St. Clair Unit.
Early requests are strongly encouraged to allow sufficient time
for meeting your access needs.

Color of Spring Workshop



*Saturday,
March 18, 2023
8 a.m.—12 p.m.*

*University of Illinois Extension
901 Illinois Ave
Waterloo, IL*



Illinois Extension
UNIVERSITY OF ILLINOIS URBANA-CHAMPAIGN

939-3434

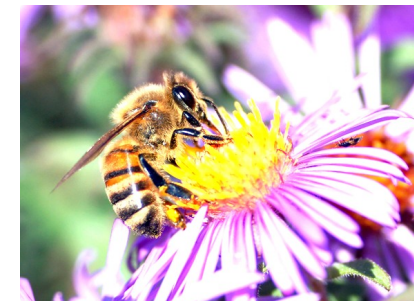
Program Schedule

8-8:30 a.m. Registration and Refreshments

8:30-9:30 a.m. “Gardening for Good”

Landon Brooks, Master Gardener

Imagine nature as a giant quilt, your garden as an important patch of habitat, and your shovel as a tool for change. The plants we choose for our own backyards can have a major impact on the biodiversity of our local environments. Learn how to attract and support wildlife by using native plants to garden for good.



9:30-9:40 a.m. Break and Refreshments

Please select one session per time slot

<p>9:40—10:10 a.m.</p>	<p>“Companion Planting 101” <i>Kim Atkins, Master Gardener & Master Naturalist</i> Learn about the well-known tradition of planting known as the “Three Sisters” method. There are many tips and techniques to successfully implement companion planting. We will also discuss polyculture planting which takes companion planting one step further.</p>	<p>“Nature Photography 101” <i>Paul Feldker</i> Capturing pictures of nature takes a lot of patience and some basic skills. Learn more about camera equipment and settings to help you get the right picture. Plus we will discuss some do’s and don’ts to get better pictures. Cameras are optional. (Max. 15 participants)</p>
<p>10:20– 10:50 a.m.</p>	<p>“Thinking Beyond Flowers for Color in the Garden” <i>Elizabeth Wahle, Extension Educator</i> Flowers are a great choice for adding color to the garden, but what about after the blooms have faded. Join Elizabeth as she discusses how to take advantage of and integrate other plant characteristics to maintain visual eye appeal throughout the year.</p>	<p>“Nature Remedy” <i>Lisa Dean, Master Gardener & Master Naturalist</i> You don't have to spend money to find a place of wellness or to de-stress from a busy life. A walk in the woods, an evening on a porch swing, or just opening a window provides simple ways to refresh your mental and physical health. There is a secret language of nature. You probably have a couple favorite ways to unwind and have never thought about what you are actually doing. Granted, there will be new information shared, but this will also be an interactive session to share what means most to you. (Max. 15 participants)</p>

10:55 a.m.– Noon

“Identifying Horticulture Pests and Problems in the Home Garden”

Elizabeth Wahle, Extension Educator

Part of managing a garden pest or problem begins with proper identification. Join Elizabeth as she discusses some of the more interesting pests and problems encountered by gardeners in the Midwest.