

Breaking SySTEMic Barriers



SCIENCE | TECHNOLOGY | ENGINEERING | MATHEMATICS

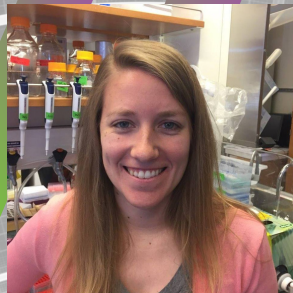


April 10 | 10 am - noon

Calling all youth interested in learning about STEM careers!

Join accomplished STEM professionals for a fun-filled Saturday.

- Breakout Rooms
- Activities
- Q & A



Stephanie Gates
(she/her/hers)
Biological Mechanisms
Postdoctoral Researcher



Sam Smalley
(she/her/hers)
Board-Certified
Behavior Analyst



Rosana Buchanan
(she/her/hers)
Doctorate student in
Business Administration



Anshita Lalwani
(she/her/hers)
Financial Planner &
Analysis Manager



Erika Berhardt
(she/her/hers)
Reliability Engineer



Annaka Stoeckel
(she/her/hers)
Process Engineer



Register by
April 2 with kits
April 8 without
go.illinois.edu/dmpevents

Attend for Free!
\$7 with supply kit
Free kit for 4-Hers!!!



Contact Olivia (she/her/hers) at
owarren@illinois.edu or 217.877.6042
with questions.



Brooke Troxell
(she/her/hers)
Science Teacher



Kadriye Hieronymi
(she/her/hers)
Scientist, Regulatory &
Scientific Affairs



Shawn Shiffer
(she/her/hers)
Environmental Engineer

Safe space for all!



Illinois Extension
UNIVERSITY OF ILLINOIS URBANA-CHAMPAIGN

College of Agricultural, Consumer and Environmental Sciences
University of Illinois * U.S. Department of Agriculture * Local Extension Councils Cooperating
University of Illinois Extension provides equal opportunities in programs and employment.
If you need a reasonable accommodation to participate in this program, please contact 217.877.6042.
Early requests are strongly encouraged to allow sufficient time for meeting access needs.