

# I ILLINOIS

## Extension



### 4-H Newsletter

June 2021

S  
U  
N  
S  
H  
I  
N  
E



P  
A  
L  
S  
4-H  
C  
L  
U  
B



#### Unit 21 Extension Offices:

- Clay.....618-662-3124
- Effingham.....217-347-7773
- Fayette.....618-283-2753
- Jasper.....618-783-2521

<http://web.extension.illinois.edu/cefj/>

#### COLLEGE OF AGRICULTURAL, CONSUMER & ENVIRONMENTAL SCIENCES

University of Illinois | U.S. Department of Agriculture | Local Extension Councils Cooperating  
University of Illinois Extension provides equal opportunities in programs and employment.

# Effingham County 4-H



## ILLINOIS

Extension

University of Illinois  
Extension Staff in



### EFFINGHAM COUNTY

1209 Wenthe Drive  
Effingham, IL 62401  
Phone: 217-347-7773  
FAX: 217-347-7775

#### Office Hours:

Monday-Friday  
8 a.m. to 4:30 p.m.

#### Carl Baker

County Extension Director

#### Patti Logan

Extension Program Coordinator, 4-H

#### Dana Homann

Extension Educator, 4-H Youth  
Development

#### Mary Fischer

Extension Educator, Horticulture

#### Michelle Fombelle

Extension Educator, SNAP-Ed

#### Jennifer Jones

Extension Watershed Outreach

#### Jackie Hahn

Office Support Associate



Effingham County 4-H Illinois

## Calendar of events

(Dates are tentative and subject to change)

### June

5..... Boer / Dairy Goat Weigh In

12..... YQCA Training

26..... Food & Clothing Show

### July

14..... YQCA Training

**Effingham County Exhibits at State Fair  
Saturday, August 14**



**Follow us on Facebook  
for the latest news and updates!**

**<https://go.illinois.edu/EFFCO4HFACEBOOK>**

## Publications

If you are needing to order publications,  
you will do it directly at this web site:

[https://illinoisaces.co1.qualtrics.com/jfe/form/SV\\_bKHndI7TOo9tS1T](https://illinoisaces.co1.qualtrics.com/jfe/form/SV_bKHndI7TOo9tS1T)

**Do you have questions about 4-H show dates?  
Project guidelines, or Animal Health requirements?**

A good first resource to look at is your 4-H Handbook. Each family should take the time to read the Effingham County 4-H Handbook. You can download your copy at [https://extension.illinois.edu/sites/default/files/3eff20214-hhand\\_book.pdf](https://extension.illinois.edu/sites/default/files/3eff20214-hhand_book.pdf)

If you still have questions, feel free to contact the [logan1@illinois.edu](mailto:logan1@illinois.edu) for more information.

COLLEGE OF AGRICULTURAL, CONSUMER  
& ENVIRONMENTAL SCIENCES

## Effingham County 4-H

Below is a list of important links to add to your bookmarks. Be sure to check out the 2021 Effingham County 4-H Handbook, along with your monthly newsletters, and much more.

2021 Effingham County 4-H Handbook & livestock ownership papers: <https://extension.illinois.edu/cefi/4-h-effingham-county>

Monthly newsletters: <https://extension.illinois.edu/cefi/4-h-effingham-county>

Illinois 4-H projects: <https://4h.extension.illinois.edu/members/projects>

Enroll in 4-H visit <https://v2.4honline.com/#/user/sign-in>

Order publications visit [https://illinoisaces.co1.qualtrics.com/jfe/form/SV\\_bKHndI7TOo9tS1T](https://illinoisaces.co1.qualtrics.com/jfe/form/SV_bKHndI7TOo9tS1T)

Spark Sheets: <https://4h.extension.illinois.edu/project-spark-sheets>

Fair Entry: <https://fairentry.com/>

**4-H Fair Schedule:** <https://go.illinois.edu/EFFCO2021FAIRSCHEDULE>

---

If you DID NOT enroll in a project on 4Honline, you will not be able to enter it on FairEntry. You will need to contact Patti at the Extension office to get your project added. The following link will take you to the 4-H FairEntry: <https://fairentry.com/Public/FindYourFair> . If you have difficulty opening it, copy the link and paste in Google Chrome or Firefox.

Use your login & password from the 4-HOnline. If you forgot your password on 4-HOnline, you will notice it reads: "I have a profile", "I need to set up a profile", or "I forgot my password". You can watch a video another unit made on how to use the FairEntry at <https://www.youtube.com/watch?v=ZU4m7vLv63o&feature=youtu.be> or refer to the attachments on how to enter your classes for 4-H Exhibition Days. For those new to 4-H, when you first enrolled in 4-H on the 4HOnline, you enrolled in 4-H projects you want to explore.

Now we are ready for the second step. This is called FairEntry. You are entering in the classes you wish to exhibit at the 4-H Exhibition Days. If you are not sure what you are to exhibit at the 4-H Exhibition Days, please see the attached 2021 Effingham County 4-H Fair Book. Here is an example: You enrolled in Photography 1. Open the 2021 Effingham County 4-H Fair Book, turn to page 56. There you will find the exhibit requirements for Photography 1. In 4-H you are only allowed 2 exhibits per class. The FairEntry program will not allow you to enter more than 2.

---

**University of Illinois Extension office in Effingham County is opened to the public**

**Hours:**

**Monday—Friday**

**8 AM—4:30 PM**

**217-347-7773**

# Effingham County 4-H

## Exhibiting Livestock Policy Procedures:

- \* Horses, Llamas and Canine are the only three species allowed to be leased. All other livestock are exempt from the lease provision.
- \* Exhibitors wishing to show Goats and Sheep will be required to submit photos of their market animals. Required photos must include: full view of left side, full view of right side, and any other identifiable or distinguishing marks or scars. Failure to comply will result in that market animal being ineligible for exhibition.
- \* Beef steers will need to be tagged and weighed in at February weigh in.
- \* Sheep will be required to have scrapie tag numbers and a photo of the tag in the lamb's ear.
- \* Swine exhibitors will need to produce ear notches and tag #'s.

Click on the link to print of your ownership forms <https://extension.illinois.edu/cefi/4-h-effingham-county>

## Youth for the Quality of Care of Animals



The Youth for the Quality of Care of Animals YQCA is a new livestock quality assurance program that is replacing PQA which no longer exists. It also replaces the Quality Assurance & Ethics (QAEC) program for youth in the following species; dairy cattle, beef cattle, swine, sheep, and goats. All 4-H exhibitors of these animals will be required to certify in the YQCA program for the show season.

Youth must **ANNUALLY** either attend a face to face class or certify on-line via the website <http://yqca.org>

There are three ways to earn YQCA certification – web-based training, instructor-led training, or test-out.

The YQCA program is for youth ages 8-21. The online version is broken into age divisions as follows: juniors 8-11, intermediate 12-14, senior 15-18, and young adults 19-21.

Youth exhibiting swine at the Illinois State Fair and 4-H fairs are no longer required to be PQA plus certified.

The estimated cost for the face to face training will be \$3 and \$12 for the online version. The Effingham County Extension office has purchased \$3 coupon codes for all Effingham County 4-H members. Be sure to contact the Extension office to get your code before registering for an in person face to face training.

**Effingham County Extension office will be hosting two YQCA certifications at our office on:**

**June 12, 10 a.m.**

**July 14, 6 p.m.**

## Effingham County 4-H

June 12, 2021

Program starts at 10 a.m.

University of Illinois Extension Effingham County

1209 N Wenthe Drive, Effingham, IL 62401



# Youth for the Quality Care of Animals (YQCA)

## Todd & Julie Kemme, Course Facilitators

**Coupon codes are being offered by the Effingham County Extension office  
for in person training for Effingham County 4-H members only**

- The YQCA is a new livestock quality assurance program that is replacing PQA which no longer exists. It also replaces the Quality Assurance & Ethics (QAEC) program for youth in the following species; dairy cattle, beef cattle, swine, sheep, and goats. All 4-H exhibitors of these animals will be required to certify in the YQCA program for the show season.
- Youth must either attend a face to face class or certify on-line via the website <http://yqca.org>
- There are three ways to earn YQCA certification – web-based training, instructor-led training, or test-out.
- The YQCA program is for youth ages 8-21. The online version is broken into age divisions as follows: juniors 8-11, intermediate 12-14, senior 15-18, and young adults 19-21.
- Youth exhibiting swine at the Illinois State Fair and 4-H fairs are no longer required to be PQA plus certified.
- The estimated cost for the face to face training will be \$3 and \$12 for the online version.

**Register by  
June 9, 2021**

**Register online at  
<https://yqca.learnrow.io/Account/Login>**



**Illinois Extension**  
UNIVERSITY OF ILLINOIS URBANA-CHAMPAIGN

UNIVERSITY OF ILLINOIS • U.S. DEPARTMENT OF AGRICULTURE • LOCAL EXTENSION COUNCILS COOPERATING  
UNIVERSITY OF ILLINOIS EXTENSION PROVIDES EQUAL OPPORTUNITIES IN PROGRAMS AND EMPLOYMENT. If you need a reasonable accommodation to participate in this program, please contact the Effingham County Extension office at 217-347-7773. Early requests are strongly encouraged to allow sufficient time for meeting your access needs.

## Effingham County 4-H

**July 14, 2021**

Program starts at 6 p.m.

University of Illinois Extension Effingham County

1209 N Wenthe Drive, Effingham, IL 62401



# Youth for the Quality Care of Animals (YQCA)

## Lynn Wolff, Course Facilitators

**Coupon codes are being offered by the Effingham County Extension office  
for in person training for Effingham County 4-H members only**

- The YQCA is a new livestock quality assurance program that is replacing PQA which no longer exists. It also replaces the Quality Assurance & Ethics (QAEC) program for youth in the following species; dairy cattle, beef cattle, swine, sheep, and goats. All 4-H exhibitors of these animals will be required to certify in the YQCA program for the show season.
- Youth must either attend a face to face class or certify on-line via the website <http://yqca.org>
- There are three ways to earn YQCA certification – web-based training, instructor-led training, or test-out.
- The YQCA program is for youth ages 8-21. The online version is broken into age divisions as follows: juniors 8-11, intermediate 12-14, senior 15-18, and young adults 19-21.
- Youth exhibiting swine at the Illinois State Fair and 4-H fairs are no longer required to be PQA plus certified.
- The estimated cost for the face to face training will be \$3 and \$12 for the online version.

**Register by  
July 12, 2021**

**Register online at  
<https://yqca.learnrow.io/Account/Login>**



**Illinois Extension**  
UNIVERSITY OF ILLINOIS URBANA-CHAMPAIGN

UNIVERSITY OF ILLINOIS • U.S. DEPARTMENT OF AGRICULTURE • LOCAL EXTENSION COUNCILS COOPERATING  
UNIVERSITY OF ILLINOIS EXTENSION PROVIDES EQUAL OPPORTUNITIES IN PROGRAMS AND EMPLOYMENT. If you need a reasonable accommodation to participate in this program, please contact the Effingham County Extension office at 217-347-7773. Early requests are strongly encouraged to allow sufficient time for meeting your access needs.

# Effingham County 4-H

## Are you READY for FAIR?

Where have the months gone? June is here and July is fast approaching. The main question on your mind may be: ARE YOU READY FOR EXHIBITION DAYS? If you are unsure of your answer, see if you can check all of these off of your ready for fair list:

- \_\_\_ Do you have your project book and have you looked it over?
- \_\_\_ Do you have your Fair Handbook and know the requirements for your project?
- \_\_\_ Do you have your project complete and ready for judging?
- \_\_\_ Have you received, filled out, and returned to the office your ownership forms?
- \_\_\_ Horse Exhibitors, did you turn in your ownership/lease papers at the beginning of May?
- \_\_\_ If it's your first year in cat, dog, horse, llama or poultry have you completed the QAEC online?
- \_\_\_ Beef, Dairy, Goat, Sheep, or Swine have you completed the annual YQCA certification?
- \_\_\_ Have you checked that you are enrolled in every project you signed up for in May?
- \_\_\_ Have you attended 1 club meeting?

If you can check all of these off your list then you are in excellent shape and ready for exhibition days. If you feel like you are unsure about what you need to bring to exhibit or you need help on your project, please email Patti at [logan1@illinois.edu](mailto:logan1@illinois.edu). We will be glad to help you.

---

## Tips for Livestock Exhibitors

You should be prepared to answer the following as it applies to your project:

- When was the animal born/hatched?
- What breed, sex and variety is the animal?
- Who are the dam/sire?
- When did it freshen? How long has it been milking? How much is it milking?
- How do you care for your animal?
- What are some diseases it may get?
- Are there any required vaccinations for your project animal?
- What do you feed your animal?

The questions above may be asked during judging or showmanship, so a 4-H member should always be ready to answer them.

# Community-Wide Birthday Party Drive by the Effingham County 4-H Federation



The Effingham County 4-H Federation needs your help! We are asking all local businesses, churches, youth & adult organizations, and community members to donate items to help make memorable birthday bags for local food pantries!

## Items to collect:

- Party Plates, Cups
- Bags
- Party Napkins
- Plastic Utensils
- Party Favors
- Party Hats
- Cake Mixes
- Canned Icing
- Birthday Candles
- Streamers
- Ice Cream Coupons
- Fast Food Coupons



**Pizza Party for the 4-H  
Club that collects the  
most items!**

Donations will be accepted from  
June 1 - July 16  
Effingham Extension Office  
1209 N Wentz Drive,  
Effingham, Illinois  
217-347-7773  
<https://extension.illinois.edu/cefj>

Contact: Ely VanDyke  
at  
[kavandyke@wabash.net](mailto:kavandyke@wabash.net)  
for more information  
or to pick up supplies



UNIVERSITY OF ILLINOIS • U.S. DEPARTMENT OF AGRICULTURE • LOCAL EXTENSION COUNCILS COOPERATING  
UNIVERSITY OF ILLINOIS EXTENSION PROVIDES EQUAL OPPORTUNITIES IN PROGRAMS AND EMPLOYMENT.  
If you need a reasonable accommodation to participate in this program, please contact the Effingham County Extension office at 217-347-7773.  
Early requests are strongly encouraged to allow sufficient time for meeting your access needs.



# Clay County 4-H



**I ILLINOIS**

Extension

**University of Illinois  
Extension Staff in**



## CLAY COUNTY

223 W Railroad St, Suite C  
Flora, IL 62839  
Phone: 618-662-3124  
FAX: 618-662-3191

### Office Hours:

Monday-Friday  
8 a.m. to 4:30 p.m.  
Closed 11:30 a.m. to 12:30 p.m.

### Carl Baker

County Extension Director

### Sarah Luce

Extension Program Coordinator, 4-H

### Dana Homann

Extension Educator, 4-H Youth  
Development

### Mary Fischer

Extension Educator, Horticulture

### Michelle Fombelle

Extension Educator, SNAP-Ed

### Jennifer Jones

Extension Watershed Outreach

### Erin Maxwell

Community Worker, SNAP-Ed



Clay County Illinois 4-H

COLLEGE OF AGRICULTURAL, CONSUMER  
& ENVIRONMENTAL SCIENCES

## Calendar of events

*(Dates are tentative and subject to change)*

### June

17..... YQCA Training

24..... Livestock & Foundation meeting, REA Building

## Fair Entry—opens June 1st

To register as a 4-H exhibitor at the Clay County 4-H Fair, each member must enroll in exhibits/classes **by July 15th**. Select the classes within the project areas you have previously signed up for. Details for each class and the requirements for the exhibits can be found in the 2021 Clay County 4-H Handbook.

Fair Entry Website: [fairentry.com](http://fairentry.com)

## Follow us on Facebook:

<https://www.facebook.com/ClayCountyIL4H>

News and updates posted there!



The impact of the COVID-19 (novel coronavirus) continues to create uncertainty and concern both globally and here in our community. Following Centers for Disease Control and Prevention (CDC) guidelines, campus leadership has implemented social-distancing protocols that impact all university events. Illinois Extension, as the outreach program of the university, aligns with all policies related to public health and safety.

University of Illinois Extension office in Clay County is open to the public.

Hours:

Monday-Friday

8-4:30, closed 11:30-12:30 for lunch

618-662-3124

## Clay County 4-H



**Clay County Fair: July 24-31, 2021**

**State Fair General Project show day: Saturday, August 14**

**4-H BBQ: Friday, July 23** Serving BBQ, Hot dogs, chips, dessert, & drinks from 4-7 PM

**Fairgrounds Clean Up July 17—8 AM to 12 PM**

Please bring rakes, shovels, brooms, blowers, wheel barrels, etc.

**Fairground Trash Can contest**

Trash cans will be painted by each club and judged for a chance to win a pizza party! 1st, 2nd, and 3rd places

Youth for the Quality Care of Animals (YQCA) is a national multi-species quality assurance program for youth ages 8 to 21 with a focus on three core pillars: food safety, animal well-being, and character development.

YQCA is currently required for those showing: **Beef, Goats, Sheep, or Swine**

The YQCA training can be done either online or in person. The cost for the face to face training will be \$3 and \$12 for the online version.

Face to face training in Clay County:

**Dates: June 17, 6 PM**



**QAEC requirement (new livestock members)**

All 4-H members enrolled in an animal project area are required to complete the online **Quality Assurance and Ethics course** one time in order to stay enrolled in an animal project area.

The certification must be done if you are enrolled in one of the following projects: beef, dairy, cats, dogs, goats, horses, poultry, rabbits, sheep, and swine. Members who don't complete the certification before the show will be removed from the project and not be allowed to show. *Anyone who has already taken the certification does not need to retake the test.*

The website is located online at: <http://web.extension.illinois.edu/qaec/>

**Clay County 4-H Handbook and 4-H Fair Schedule**

Handbooks will soon be available online: <https://extension.illinois.edu/cefi/4-h-clay-county> under Fairs & Show. Printed copies will be distributed through leaders to the 4-H families.

# Clay County 4-H



Tentative



## 2021 Clay County 4-H Show Schedule

### May 10

*Location-Clay County Extension Office*

5:30 PM Public Presentations Contest

### Saturday, July 17

#### **Fairgrounds Clean Up**

8:00 AM—12:00 PM

### Thursday, July 22

#### **Food & Clothing Show**

*Location – REA Building*

4:30-5:30 PM Check-In

5:30 PM Judging Begins

Projects: Clothing & Textiles, Foods & Nutrition, Visual Arts-Food/Cake Decorating

### Friday, July 23

*Location – REA Building*

4-7 PM 4-H BBQ

### Saturday, July 24

#### **General Project Show**

*Location – REA Building*

8:30 AM Check-in

9 AM Judging Begins

Projects: Aerospace, Animal Science, Bicycle, Civic Engagement, Cloverbud, College & Career Readiness, Communications, Computer Science, Consumer Education, Crops, Do Your Own Thing, Electricity, Entomology, Entomology Beekeeping, Exploratory, Forestry, Geology, Geospatial, Health, Horticulture: Floriculture, Horticulture: Vegetable Gardening, Intercultural, Interior Design, Leadership, Natural Resources, Photography, Plants & Soils, Robotics, Small Engines, Small Pets, Technologies, Theatre Arts, Tractor, Vet Science, Video/Filmmaking, Visual Arts, Weather, Welding, Woodworking

#### **General & Food/Clothing Project Pickup**

4-H Projects must be picked up Tuesday evening

1 PM Rabbit & Poultry Check-In

2 PM 4-H Poultry Show

*Location – Show Ring*

To follow 4-H Rabbit Show

### Sunday, July 25

12 PM Livestock must be on the fairgrounds

*Location – Show Ring*

12-1 Veterinary Paper Check

Check of livestock health papers for 4-H livestock shows

12-3 PM Livestock Weigh-In

*Location – REA Building*

4 PM Awards Recognition, Livestock Exhibitors Mandatory Meeting, Check of livestock records & entries, & Master Showmanship Sign-Up

### Monday, July 26

8 AM 4-H Beef Show

2 PM 4-H Sheep Show

### Tuesday, July 27

8 AM 4-H Swine Show

2 PM 4-H Goat Show

5 PM Master Showmanship Contest

(Hosted by Clay County Farm Bureau Young Leaders)

### Wednesday, July 28

1 PM 4-H Tractor Driving Competition

6:30 PM Livestock Auction

### Thursday, July 29

*Location-REA Building*

9:30 AM Check-in for dogs

10 AM 4-H Dog Show

12 PM 4-H Cat Show

6 PM 4-H Horse Show

*Location – Arena*

**BBQ Tickets available at  
the Extension Office!**





## Clay County Farm Bureau Food Stand Schedule

Prepared by: CCFB Women's Committee

**@ the 2021  
Clay County Fair**

**SUNDAY, JULY 25TH**  
10:30AM-4PM  
LUNCH & DRINKS/SNACKS

**MONDAY, JULY 26TH**  
6:30AM-4:00PM  
BREAKFAST, LUNCH, & DRINKS/SNACKS

**TUESDAY, JULY 27TH**  
6:30AM-4:00PM  
BREAKFAST, LUNCH, & DRINKS/SNACKS

**WEDNESDAY, JULY 28TH**  
6:30AM-10:00AM  
BREAKFAST & DRINKS/SNACKS

*Prepaid \$5 Punch Cards  
Can Be Purchased Ahead of  
Time @ Clay County Farm  
Bureau or at the Fair.*



Farm Bureau Schedule of Events

Friday, July 23rd- Ag Olympics @ 6:30pm

Saturday, July 24th- Rafter 7P Rodeo @ 7pm- Gates Open @ 5pm- Sign Up for Mutton Bustin' @ 5-6:45pm

Sunday, July 25th- Pedal Tractor Pull @ 2pm

Sunday, July 25th- Master Showman Sign Up @ 4H Exhibitor's Meeting

Monday, July 26th- Mini Livestock Show (Ages 4-8) @ 5pm

# Fayette County 4-H



**I ILLINOIS**

Extension

**University of Illinois  
Extension Staff in**



## FAYETTE COUNTY

118 N. Sixth St.  
Vandalia, IL 62471  
Phone: 618-283-2753  
FAX: 618-283-4932

### Office Hours:

Monday-Friday  
8 a.m. to 4:30 p.m.  
Closed 11:30 a.m. to 12:30 p.m.

**Carl Baker**

*County Extension Director*

**Sarah Luce**

*Extension Program Coordinator, 4-H*

**Dana Homann**

*Extension Educator, 4-H Youth  
Development*

**Mary Fischer**

*Extension Educator, Horticulture*

**Michelle Fombelle**

*Extension Educator, SNAP-Ed*

**Jennifer Jones**

*Extension Watershed Outreach*

**Jo Stine**

*Community Worker, SNAP-Ed*

**Debbie Boley**

*Office Support Assistant*



Fayette County 4-H

COLLEGE OF AGRICULTURAL, CONSUMER  
& ENVIRONMENTAL SCIENCES

## Calendar of events

*(Dates are tentative and subject to change)*

### June

- 9..... YQCA Training, Fayette County Farm Bureau
- 10..... Livestock Committee Meeting, 8pm
- 12..... Fairgrounds Clean Up
- 21..... YQCA Training, Fayette County Farm Bureau
- 26..... Food & Clothing Show

## Follow us on Facebook:

<https://fb.me/FayetteCountyIL4H>

News and updates posted there!



The impact of the COVID-19 (novel coronavirus) continues to create uncertainty and concern both globally and here in our community. Following [Centers for Disease Control and Prevention \(CDC\) guidelines](#), campus leadership has implemented social-distancing protocols that impact all university events. Illinois Extension, as the outreach program of the university, aligns with all policies related to public health and safety.

University of Illinois Extension office in Fayette County is opened to the public.

**Hours:**

**Monday-Friday**

**8-4:30, closed 11:30-12:30 for lunch**

**618-283-2753**

# Fairgrounds Clean Up

Help us get the fairgrounds  
ready for the fair!

**Saturday, June 12**

**9-11 AM**

Please bring brooms, rakes, shovels, blowers  
and other cleaning tools

### **Food & Clothing Show: Saturday, June 26<sup>th</sup>**

Brownstown Elementary School

Check In: 12 PM

Judging: 1 PM

Projects: Clothing & Textiles, Fashion Revue, Foods & Nutrition, Table Decorating, Visual Arts-Food/Cake Decorating

### **General Project Show: Wednesday, July 14<sup>th</sup> (\*Please note day change\*)**

Club Check In:

8:30 AM Shafter Friends & Loudon Bunch

9:30 AM Ramsey S&S

10:00 AM Golden Harvestors

10:30 AM Caprine Kids & Sefton Clovers

11:00 AM St. James Hornets

Projects: Aerospace, Animal Science, Bicycle, Child Development, Civic Engagement, Cloverbud, College & Career Readiness, Communications, Computer Science, Consumer Education, Crops, Do Your Own Thing, Drone, Electricity, Entomology, ESports, Exploratory, Family Heritage, Forestry, Geology, Health, Horticulture, Intercultural, Interior Design, Leadership, Maker, Natural Resources, Photography, Plants & Soils, Robotics, Small Engines, Small Pets, Technologies, Theatre Arts, Tractor, Vet Science, Video/Filmmaking, Visual Arts, Weather, Welding Woodworking

Project requirements can be found in the Fayette County 4-H Handbook: [https://extension.illinois.edu/sites/default/files/fayette\\_county\\_4-h\\_handbook\\_2021.pdf](https://extension.illinois.edu/sites/default/files/fayette_county_4-h_handbook_2021.pdf)

## Master Showmanship

We have partnered with the Fayette County Farm Bureau Young Leaders, who have generously agreed to host a Master Showmanship contest. The Master Showmanship Contest tests individual's skills and knowledge of showing beef, swine and sheep. Contestants are judged on their visual showmanship skills and are also asked questions about each of the species. We are planning to have two age divisions: Senior: 14-18 and Junior: 8-13. Animals will not be provided, therefore participants will have to secure their own/ask to borrow.

**Sunday, July 11, 6:30 PM**

Return Participation Form by **July 2nd** to the office!



## Fayette County 4-H



**Fayette County Fair: July 10-14, 2021**

General Project show day: Saturday, August 14

Youth for the Quality Care of Animals (YQCA) is a national multi-species quality assurance program for youth ages 8 to 21 with a focus on three core pillars: food safety, animal well-being, and character development.

YQCA is currently required for those showing: **Beef, Goats, Sheep, or Swine**

The YQCA training can be done either online or in person. The cost for the face to face training will be \$3 and \$12 for the online version.

Face to face training in Fayette County:

**Dates:** June 9, Fayette County Farm Bureau, 7pm

June 21, Fayette County Farm Bureau, 7pm



### QAEC requirement (new livestock members)

All 4-H members enrolled in an animal project area are required to complete the online **Quality Assurance and Ethics course** one time in order to stay enrolled in an animal project area.

The certification must be done if you are enrolled in one of the following projects: beef, dairy, cats, dogs, goats, horses, poultry, rabbits, sheep, and swine. Members who don't complete the certification before the show will be removed from the project and not be allowed to show. *Anyone who has already taken the certification does not need to retake the test.*

The website is located online at: <http://web.extension.illinois.edu/qaec/>

### Fayette County 4-H Handbook and 4-H Fair Schedule

Handbooks will soon be available online: <https://extension.illinois.edu/cefi/4-h-fayette-county> under Fairs & Show. Printed copies will be distributed through leaders to the 4-H families.

### Fair Entry—opens June 1st

To register as a 4-H exhibitor at the Fayette County 4-H Fair, each member must enroll in exhibits/classes **by July 1st**. Select the classes within the project areas you have previously signed up for. Details for each class and the requirements for the exhibits can be found in the 2021 Fayette County 4-H Handbook.

Fair Entry Website: [fairentry.com](http://fairentry.com)

### Publications & Manuals

Members select their projects within 4-H Online and may purchase resources available to help them learn about the project. If books are needed please select the books you wish to receive in the online order form.

<https://go.illinois.edu/pubsrequest>

# Fayette County 4-H



Tentative



## 2021 Fayette County 4-H Show Schedule

### Saturday, June 11

9 AM – 11 AM Fayette County Fairgrounds Clean Up

### Saturday, June 26

Food & Clothing Show

12 – 1 PM Check- In

1 PM Judging Begins

1:30 PM Table Decorating & Foods Demonstration

2:00 PM Fashion Revue

\*Awards presentation will be held Wednesday, July 14

\*Visual Arts-Food Decorating is judged on this day

\*\*Times are approximate\*\*

**Brownstown Elementary School**

### Saturday, July 10

8 AM Horse Show Check-In

9 AM 4-H Horse Show

2:30 PM 4-H Rabbit Show Check-In

3:00 PM 4-H Rabbit Show

5:00 PM 4-H Goat Wethers Check-In/Weigh-In

6:00 PM 4-H Livestock Exhibitors Mandatory Meeting

All 4-H livestock must be on the fairgrounds by 5 p.m.

### Sunday, July 11

11 AM Check of livestock health papers, live stock records, and entries for 4-H livestock shows

11:30 AM 4-H Poultry Show Check-In

12:00 PM 4-H Poultry Show

1:00 PM Weigh In of Market Swine, Sheep, Beef and Dairy Steers

4:00 PM 4-H Goat Show

6:30 PM Master Showmanship

### Monday, July 12

8 AM 4-H Sheep Show

11 AM 4-H Beef Show/Dairy Steer Show

5 PM 4-H Swine Show

### Tuesday, July 13

2 PM 4-H Dairy Show

6 PM 4-H Auction

### Wednesday, July 14

9 AM 4-H General Project Show

8:30 AM Check-In

Opens for assigned clubs

1:30 PM 4-H Dog Show Check-In

2:00 PM 4-H Dog Show

3:30 PM 4-H Cat Show Check-In

4:00 PM 4-H Cat Show

6 PM Awards Presentation

\*\* Projects Released following awards\*\*

**Fayette County 4-H**  
Making a difference for life



# Jasper County 4-H



**I ILLINOIS**  
Extension



**University of Illinois  
Extension Staff in**

## **JASPER COUNTY**

1401 Clayton Ave.  
Newton, IL 62448  
Phone: 618-783-2521  
FAX: 618-783-2232

### **Office Hours:**

Monday-Friday  
8:00 a.m. to 4:30 p.m.  
Closed 12 to 1:00 p.m.

### **Carl Baker**

*County Extension Director*

### **Katie Turkal**

*Extension Program Coordinator, 4-H*

### **Dana Homann**

*Extension Educator, 4-H Youth  
Development*

### **Mary Fischer**

*Extension Educator, Horticulture*

### **Michelle Fombelle**

*Extension Educator, SNAP-Ed*

### **Jennifer Jones**

*Extension Watershed Outreach*

### **Sarah Clayton**

*Office Support Assistant*



Jasper County Illinois 4-H

## **Calendar of events**

*(Dates are tentative and subject to change)*

### June

- 5 Fair Clean-up Day
- 9 Camp Cloverbud
- 10 Superintendent Meeting
- 16 Deliver Barrows To Hartrich's
- 18-24 Jasper Co. 4-H Shows
- 20-26 \*Jasper County Fair\*

### August

- 14 .....Jasper Co. Day At Illinois State Fair

## **Online ethics certification required for everyone taking 4-H animal projects**

All 4-H members enrolled in an animal project area are required to complete either the online **Quality Assurance and Ethics course** OR the **YQCA training** in order to stay enrolled in an animal project area.

The **QAEC** certification must be completed if you are enrolled in one of the following projects: cats, dogs, horses, poultry, and rabbits. This is a one-time certification for your entire 4-H career. The website for the certification is <http://web.extension.illinois.edu/qaec/>.

The **YQCA** training must be completed if you are enrolled in one of the following projects: beef, dairy, goats, sheep, and swine. All 4-H exhibitors of these animals will be required to certify in the YQCA program yearly. The website for the training is [yqca.org](http://yqca.org).

## **Jasper County Day at State Fair**

**Mark your calendars. This year's general project day for Jasper County at the Illinois State Fair is Saturday, August 14.**

## Let's protect that beautiful head of yours

### Equine Headgear:

All 4-H members are **required** to wear a properly fitted ASTM or SEI standard F1163 (or above) certified equestrian helmet whenever mounted or driving at all 4-H horse and pony events, shows, activities, or practices. Original tags must be present in all approved helmets. The 4-H member is responsible to see that this specified head-gear is properly fitted with the approved harness fastened snugly in place whenever mounted. Helmet policies apply to all county, area, and state 4-H horse and pony events, shows, and activities. Protective helmets are recommended for all riders and drivers at all times. It is recommended that all adults working with 4-H members model the desired youth behavior by also wearing protective helmets whenever mounted or driving.

A few helmets will be provided, but please bring one if you have it. Also, all horses 12 months of age or older must have a copy of a negative Coggins test. Exhibitors need to have a copy with them at the show.



## Tips for Livestock Exhibitors

You should be prepared to answer the following as it applies to your project:

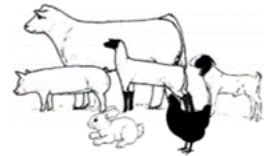
- When was the animal born/hatched?
- What breed, sex and variety is the animal?
- Who are the dam/sire?
- When did it freshen? How long has it been milking? How much is it milking?
- How do you care for your animal?
- What are some diseases it may get?
- Are there any required vaccinations for your project animal?
- What do you feed your animal?

The questions above may be asked during judging or showmanship, so a 4-H member should always be ready to answer them.

ALL 4-H Members taking a livestock project are **REQUIRED** to complete a 4-H Livestock record for the following species:

beef, dairy, swine, sheep, poultry, rabbit, goat, and horse.

**These records are inspected, along with other health documents at county 4-H fair check-in.**



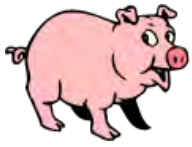
## Fair Clean-up Day

Fair time is upon us! Are you ready? Fair Clean Up Day is scheduled for June 5 starting at 9 a.m. Bring your rake, shovel, and wheel barrow to help get the 4-H building, barn, and surrounding grounds ready for our shows!

## Check your 4-H Handbook!

Do you have questions about 4-H Show dates, Project guidelines, or Animal Health requirements? A good first resources to look at is your 4-H Handbook. Each family should receive a handbook at your club meeting. If you still have questions, contact your club leader or the Extension Office.

# Jasper County 4-H



## 4-H Carcass Show

Members participating in the swine carcass show should deliver their animals to Hartrich's Meats in Ste. Marie on Wednesday, June 16 by 8 AM.

The carcasses will be judged by Friday, June 18 and results will be given at the Auction on Thursday, June 24.

We appreciate Hartrich Meats for working with the Jasper County 4-H to provide this opportunity for members!

## Federation Meeting

Thursday, June 17 @ 6 p.m.

4-H Building at the Fairgrounds

The Jasper County 4-H Federation is for all Jasper County 4-H Members of high school age and older.

## 4-H Superintendents

Thursday, June 10 @ 7:30 p.m.

4-H Building at the Fairgrounds

## Jasper County 4-H Shows June 18-24

### CALLING ALL VOLUNTEERS:

We are looking for Judge's Helpers for the General Project Show.

Judge's Helpers Duties:

- Assist judges with book
- Organize participants to judging area
- Give ribbons to exhibitors
- Help with check-in table registrations
- Organize exhibits

If you can help, call the Jasper County Extension Office at 618-783-2521.



## 4-H Federation Spotlights

### Virgil Jansen

4-H Club:

Harmon 4-H

Years in 4-H: 8

4-H Projects:

Goats & Welding

Work:

Jansen Grain Farm

Plans for college:

Lake Land College

Dream job: Lineman

Favorite hobby: Hunting & fishing

Favorite food: Deer steak

Virgil's favorite season of the year: Fall, because it's deer season



# Jasper County 4-H

## Shawn Crutcher

4-H Club: Harmon 4-H

Years in 4-H: 7

4-H Projects:

Beef & Swine

Activities/clubs: FFA

Plans for college:

Clarendon College

Dream job:

Ranch owner

Favorite hobby: Showing cattle

Favorite food: Steak

Shawn's favorite season of the year: Fall, because of the good weather



## Taylor Slough

4-H Club:

Grandville Gang

Years in 4-H: 8

4-H Projects:

Horses, Poultry,  
& Photography

Activities/clubs:

Horse judging team,  
XC, FFA

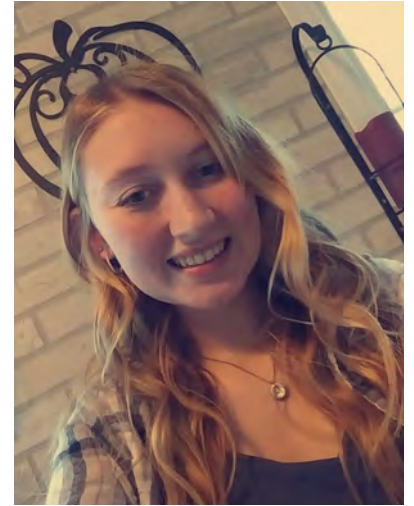
Dream job:

Therapeutic horse riding

Favorite hobby: Horseback riding, running, & cooking

Favorite food: Chicken sandwich

Taylor's favorite season of the year: Fall, because the leaves are pretty



## Jenna Goebel

4-H Club: Harmon 4-H

Years in 4-H: 9

4-H Projects:

Rabbits & Goats

Activities/clubs:

Beta club & Spanish club

Work:

Island Grove Pet

Kennels

Dream job:

Something animal related

Favorite hobby: Raising dogs

Favorite food: Bacon Pizza or Chicken on the beach

Jenna's favorite season of the year: Fall, because it is cool/warm and the leaves change colors



## Grady Bergbower

4-H Club: Reisner

Sunny Pioneers

Years in 4-H: 8

4-H Projects: Swine

Activities/clubs: FFA

Work: Napa Auto Parts

Dream job:

working at Napa

Favorite hobby: Fishing

Grady's favorite season of the year: Fall



# JASPER COUNTY 4-H FOUNDATION

## Pork Chop Fundraiser!



Friday, July 9  
4 - 7 p.m.  
Jasper Co.  
Fairgrounds

Pork Chop Meal \$10

Pork Burger Meal \$9

Meal includes sandwich, baked  
beans, coleslaw, chips, drink,  
AND

Farm Bureau Ice Cream!

Come help support the Jasper County 4-H  
program! Tickets can be purchased ahead from  
4-H club member, or call the Extension office.



**Illinois Extension**

UNIVERSITY OF ILLINOIS URBANA-CHAMPAIGN

1401 Clayton Ave., Newton, IL 62448 (618) 783-2521 <http://web.extension.illinois.edu/cejf/>  
University of Illinois \* U.S. Department of Agriculture \* Local Extension Councils Cooperating  
University of Illinois Extension provides equal opportunities in programs and employment.

Come join us for

# Grandparents Day/4-H Showcase

Grandparents, parents, family friends, and 4-H supporters are all welcome to join us for dinner at 5 p.m. and a short Awards Show at 7 p.m. 4-H General Show projects and the Wall of Champions will be in the 4-H Building for viewing. Please let us know how many family members and friends that will be coming to celebrate this fun day with you. There will be a sign-up sheet at the 4-H food stand, or you can contact us at the Jasper County Extension Office.

**June 23 • 5 PM**

**4-H Show Arena**

**Jasper County Fairgrounds**



Phone: 217/232-0887  
e-mail: [turkal@illinois.edu](mailto:turkal@illinois.edu)

University of Illinois \* U.S. Department of Agriculture \* Local Extension Councils Cooperating  
University of Illinois Extension provides equal opportunities in programs and employment.  
If you need a reasonable accommodation to participate in this program, please contact our office.

# Jasper County 4-H

## 2021 4-H Food Stand Schedule

Date	Show	Shift Time	Club
Friday, June 18	General Show	3 – 7 p.m.	Vanderhoof Producers
Saturday, June 19	Section 20 FFA Show	8 a.m. – Noon	Fox's Southern Farm Kids
Saturday, June 19	Horse Show	4 – 7 p.m.	4-H Ambassadors/Federation
Sunday, June 20	Poultry & Rabbit Show	1 – 5 p.m.	Vanderhoof Producers
Sunday, June 20	Family Fun Night	5 – 8 p.m.	Fox's Southern Farm Kids
Monday, June 21	Weigh-In 8 a.m.	7 – 10:30 a.m.	Grandville Gang
Monday, June 21	Lunch Prep	10:30 a.m. – 2 p.m.	Young Achievers
Monday, June 21	Sheep & Goat Show	2 - 4:30 p.m.	Harmon 4-H
Monday, June 21	Sheep & Goat Show cont.	4:30 – 7 p.m.	Aces
Tuesday, June 22	Swine Show 8 a.m.	7 – 11 a.m.	Reisner Sunny Pioneers
Tuesday, June 22	Lunch Prep	10 – 2 p.m.	Helpful Little HAnds
Tuesday, June 22	Beef Show 5 p.m.	2 – 5 p.m.	The Futures
Tuesday, June 22	Beef Show cont.	5 – 8 p.m.	Harmon 4-H
Wednesday, June 23	Open Show/Swine	7 – 11 a.m.	Helpful Little Hands
Wednesday, June 23	Lunch Prep	10 – 2 p.m.	Young Achievers
Wednesday, June 23	Open Show/Beef	2 – 5 p.m.	Buck Grove Kids
Wednesday, June 23	4-H Showcase/Grandparents Day	5 – 7 p.m.	Futures
Thursday, June 24	Master Showmanship 8 a.m. Dairy Show 10 a.m.	7:30 – 11:30 a.m.	Grandville Gang
Thursday, June 24	Auction Set Up	Noon-4 p.m.	Aces
Thursday, June 24	Auction	4 – 8 p.m.	4-H Alumni

# Jasper County 4-H



<b>Date</b>	<b>Show/Event</b>	<b>Time</b>	<b>Location</b>
<b>Monday, April 12</b>	Public Speaking Contest	<b>7:00 p.m.</b>	Extension Office
<b>Saturday, June 5</b>	Clean-up Day	<b>8:00 a.m.</b>	Fairgrounds
<b>TBD</b>	*Horse Show	<b>TBD</b>	Jasper Co. Fairgrounds
<b>Wednesday, June 16</b>	Deliver Barrows to Hartrich's	<b>8:00 a.m.</b>	Hartrich's Meats, Ste. Marie
<b>Thursday, June 17</b>	General Building Set-Up	<b>4-6 p.m.</b>	4-H Building
<b>Friday, June 18</b>	General Show Registration	<b>4-6 p.m.</b>	4-H Building
<b>Saturday, June 19</b>	Section 20 FFA Shows		4-H Show Ring
<b>Saturday, June 19</b>	Dog Show	<b>9:00 a.m.</b>	TBD
<b>Saturday, June 19</b>	Cat Show	<b>1:00 p.m.</b>	TBD
<b>Saturday, June 19</b>	Move In	<b>After 4 p.m.</b>	
<b>Saturday, June 19</b>	Records & Health Paper	<b>3-6 p.m.</b>	4-H Building
<b>Sunday, June 20</b>	Poultry Show	<b>2:00 p.m.</b>	4-H Show Ring
<b>Sunday, June 20</b>	Rabbit Show	<b>5:00 p.m.</b>	4-H Show Ring
<b>Monday, June 21</b>	Weigh-In	<b>8:00 a.m.</b>	Beef and Swine Barns
<b>Monday, June 21</b>	Sheep & Goat Shows	<b>4:00 p.m.</b>	4-H Show Ring
<b>Tuesday, June 22</b>	Swine Show	<b>8:00 a.m.</b>	4-H Show Ring
<b>Tuesday, June 22</b>	Beef Show	<b>5:00 p.m.</b>	4-H Show Ring
<b>Wednesday, June 23</b>	Open Shows		4-H Show Ring
<b>Wednesday, June 23</b>	4-H Showcase/ Grandparents Day	<b>5:00 p.m.</b>	4-H Building
<b>Thursday, June 24</b>	Master Showmanship	<b>8:00 a.m.</b>	4-H Show Ring
<b>Thursday, June 24</b>	Dairy Show	<b>9:30 a.m.</b>	4-H Show Ring
<b>Thursday, June 24</b>	Set Up Show Ring Auction	<b>2:00 p.m.</b>	4-H Show Ring
<b>Thursday, June 24</b>	Auction	<b>5:00 p.m.</b>	4-H Show Ring
<b>Friday, June 25</b>	Clean Up / Move Out		
<b>Saturday, August 14</b>	Illinois State Fair		Springfield, IL





# Illinois 4-H



## 4-H Shooting Sports Leader Certification Training

A summer 4-H Shooting Sports leader certification training is scheduled for **Saturday, July 24, 2021** in Pike County, IL. Shotgun, Rifle, Archery, Pistol, Hunting/Outdoor Skills, and Coordinator disciplines offered.

Contact your local U of I Extension Office for registration information.

<https://4h.extension.illinois.edu/programs/shooting-sports/4-h-shooting-sports-volunteers>

Questions? Contact Curt Sinclair at [sinclair@illinois.edu](mailto:sinclair@illinois.edu)

## 4-H National Opportunities

From September 10-12 and on October 9, 2021 the True Leaders in Equity Institute will prepare up to 20 teams to be change agents to create more welcoming and inclusive environments in 4-H.

At the Institute, your team will gain a deeper understanding of equity and inclusion, choose an issue to focus on, develop new skills, create an action plan for when you return home!

Head [here to apply](#) by June 30<sup>th</sup>. Download the [FAQs here](#).



## Illinois 4-H Special Offer: Become an Illinois RiverWatch citizen scientist!

With one paid adult, two 4-H youth may attend one of 14 different statewide workshops free of charge. During this 6-8 hour training, volunteers are taught to identify over 30 different organisms using a stereoscope. During the field training session, participants visit a local stream, where the Trainer demonstrates proper monitoring techniques and explains how to complete the data sheets. Additional information about RiverWatch is available at: <http://www.ngrrec.org/Riverwatch/>.



## New 4-H Bass Fishing SPIN Club curriculum

The new Bass Fishing SPIN Club curriculum, or Special Interest club, takes place over the course of 6 weeks and will focus on aquatic ecosystems, fish biology, and include STEM activities relating to fishing gear. Kids learn and take part in the sport, but they also gain a variety of skills and knowledge as they master fishing.

Find it on the Illinois 4-H Project page website at: <https://4h.extension.illinois.edu/members/projects/nature-fishing-and-wildlife>

# Illinois 4-H

## Illinois 4-H is being asked for help with an important research project!

Are you ready to catch the buzz? Youth can take the role of citizen scientists through the I-Pollinate program run through the University of Illinois at Urbana-Champaign. Youth volunteers can join up to three research projects and help collect critical data on monarch butterfly eggs and caterpillars, pollinator visits to ornamental flowers, and statewide bee distribution. Your efforts will help inform conservation plans and how to plant gardens for pollinator habitat!

Ready to learn more? Head here: <https://ipollinate.illinois.edu/how-to-participate/>



## Host an international student for the Academic year August-June

Host a student from Japan or South Korea this summer through States' 4-H International! Expand your family's cultural understanding, learn about new foods and customs, and possibly learn a new language all while sharing your own.

### PROGRAM DETAILS:

Students are enrolled in public high school and arrive in the USA in August.

Your family and exchange student will be supported by local and state coordinators.

**STUDENT DETAILS:** Visit the Illinois states 4-H International Exchange for details about the student coming this summer. <https://www.facebook.com/Illinois4hexchange>

**SCHEDULE:** Hosting takes place mid-July through mid-August.

**WHO CAN APPLY:** Anyone who wants to welcome a high school student into their family and is able to provide the student meals and a bed.

Contact the State Coordinator for more information:

Miriam Rosenbohm, [rosenbohm07@comcast.net](mailto:rosenbohm07@comcast.net) or 309-339-8282



# Illinois 4-H

## Schleich Toys Story Contest



What do you think would happen if the toy company Schleich got together with 4-H to create the most fantastic animal tale of all time?

Find out with the “Create Your Story” contest, launching NOW! Join in the fun by creating a story only YOU can imagine.

The top 10 stories will go to a vote and the top two will be part of an interactive “create your own adventure” video premiering this fall!

Find out more here: <https://bit.ly/3taqrEV>

## Midwest Youth Photography Challenge

Calling all youth photographers! The Capture What’s Great in Midwest States 4-H Photography Challenge is all about exploring what makes your town, county, state or the Midwest great! Submissions due June 30. Learn more: [z.umn.edu/Midwest-states-photo-challenge](https://z.umn.edu/Midwest-states-photo-challenge)



## Upcoming Dates

- May 31 DEADLINE: State 4-H Public Speaking Contest Submissions Due
- June 5 4-H Shooting Sports Leader Training at 4-H Memorial Camp
- June 5 State Public Speaking Contest
- June 6-8 4-H Family Camp Session #1
- June 18-20 4-H Family Camp Session #2
- June 21 State 4-H Livestock Judging Contest
- June 27 – July 1 Illini Summer Academies (Virtual)
- July 1-3 Camp Corral Family Camp
- July 9-11 4-H Family Camp Session #3
- July 24 4-H Shooting Sports Leader Training at Camp Gardner in Hull
- July 25 – August 1 ISF Junior Horse Show
- July – August In-Bound Exchange Program Summer 2021



### **Register & Report How 4-H is Making a Difference!**

4-H members are making a difference in communities every day so remember you can still register service outreach efforts that have or will be happening in **March, April, May and June**. **State supported service efforts are included on the** registration site. Register [here](#).

Also, make sure you REPORT about what you did on the Clubs page of the Illinois 4-H website: <https://4h.extension.illinois.edu/clubs>

University of Illinois • U.S. Department of Agriculture • Local Extension Councils Cooperating  
University of Illinois Extension provides equal opportunities in program and employment.  
If you need a reasonable accommodation to participate in a program,  
please contact your local Extension office.