



Embryology Poultry Fun Facts: Did You Know?





- Ken Koelkebeck
 - Extension Specialist, Poultry
 - University of Illinois Extension



Vital Statistics

- Maximum life span:
8-10 years 35?
- Body temperature:
107° F
- Respiratory rate:
12-36 breaths/min.
- Heart rate:
250-450 beats/min.





Chicken Senses

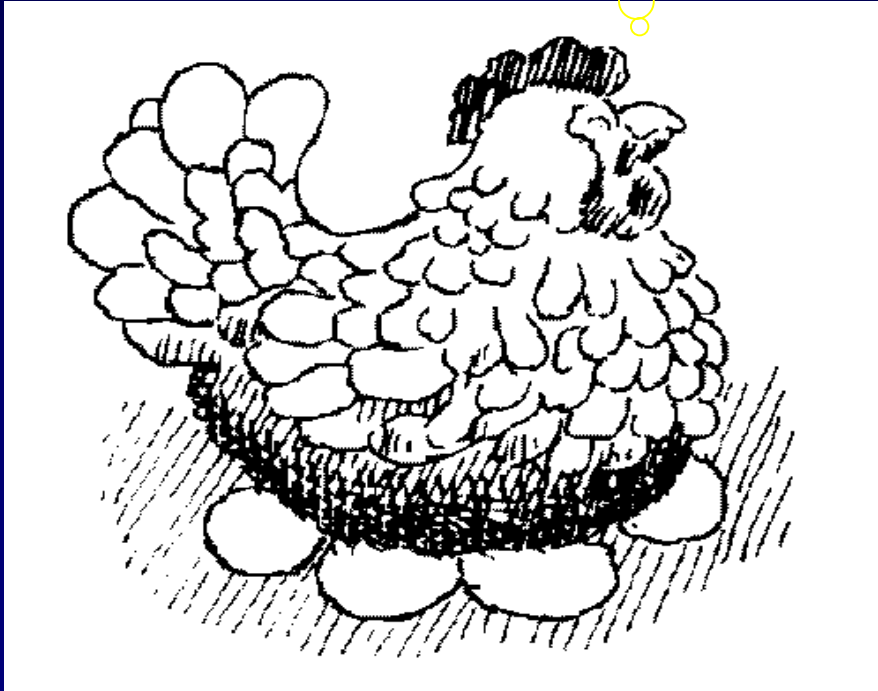


- Humans have about 9,000 taste buds - chickens have 24.
- Chickens can make about 22 different sounds.
- Eyesight is the most developed sense in the chicken.

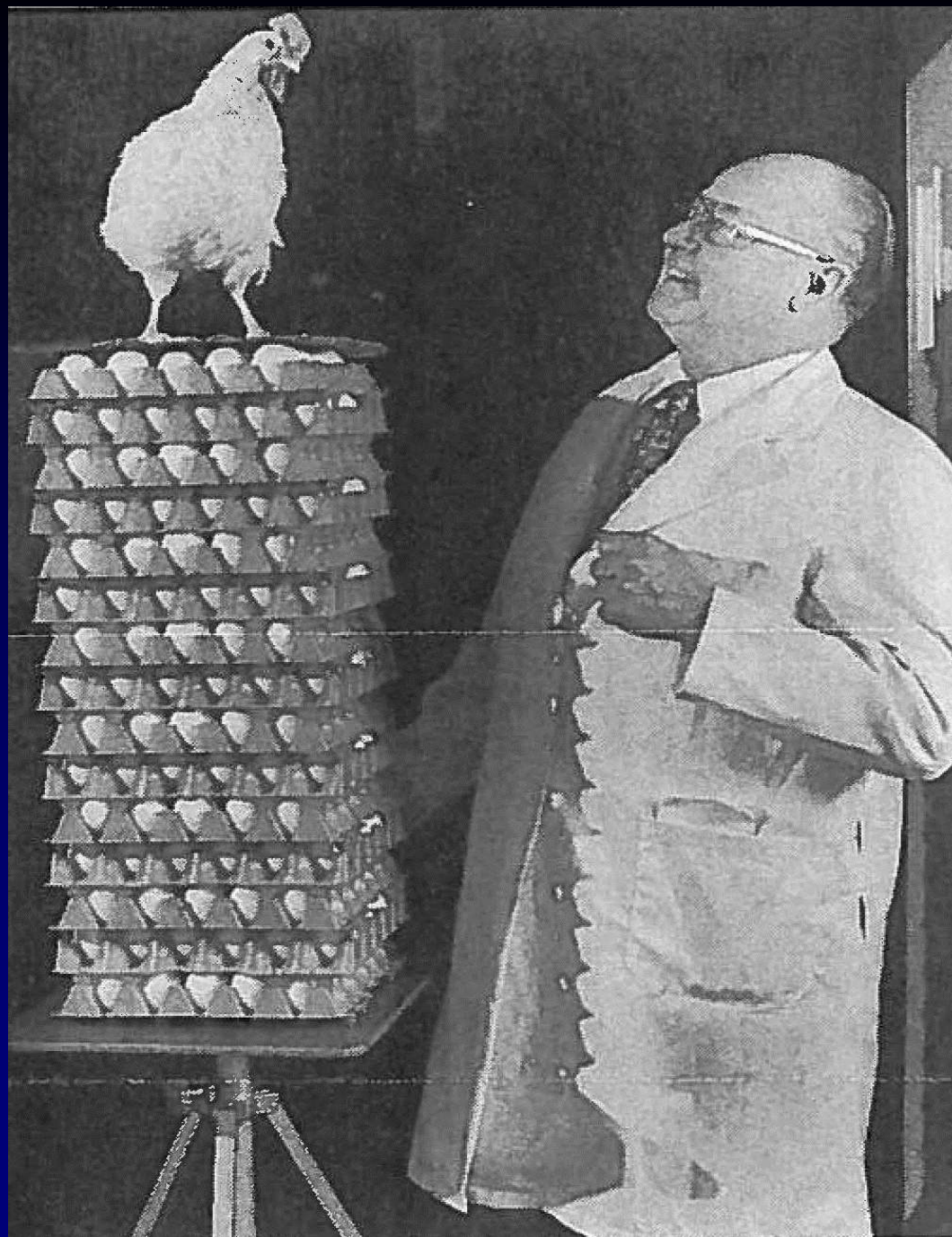


Poultry Power!

A hen's work is never done!



- The average hen lays between 280 and 325 eggs per year.
- In 1979, a Leghorn hen laid 371 eggs in 365 days - that's more than an egg a day on average!

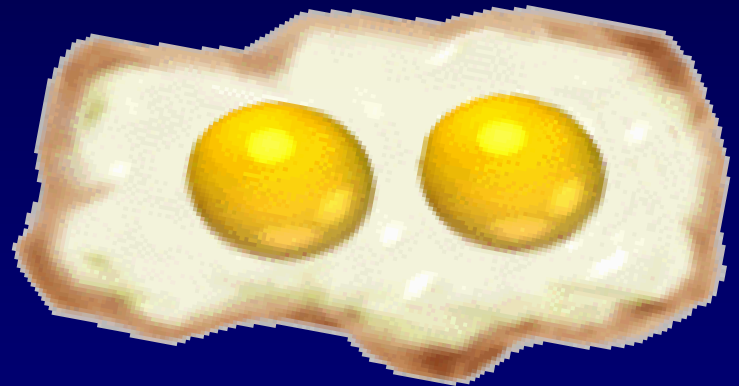




Poultry Power!

- The record for most yolks ever found in one egg is nine.
- Two hens tied this record in the US in 1971, another hen in the former Soviet Union in 1977.

Overachievers!?!?

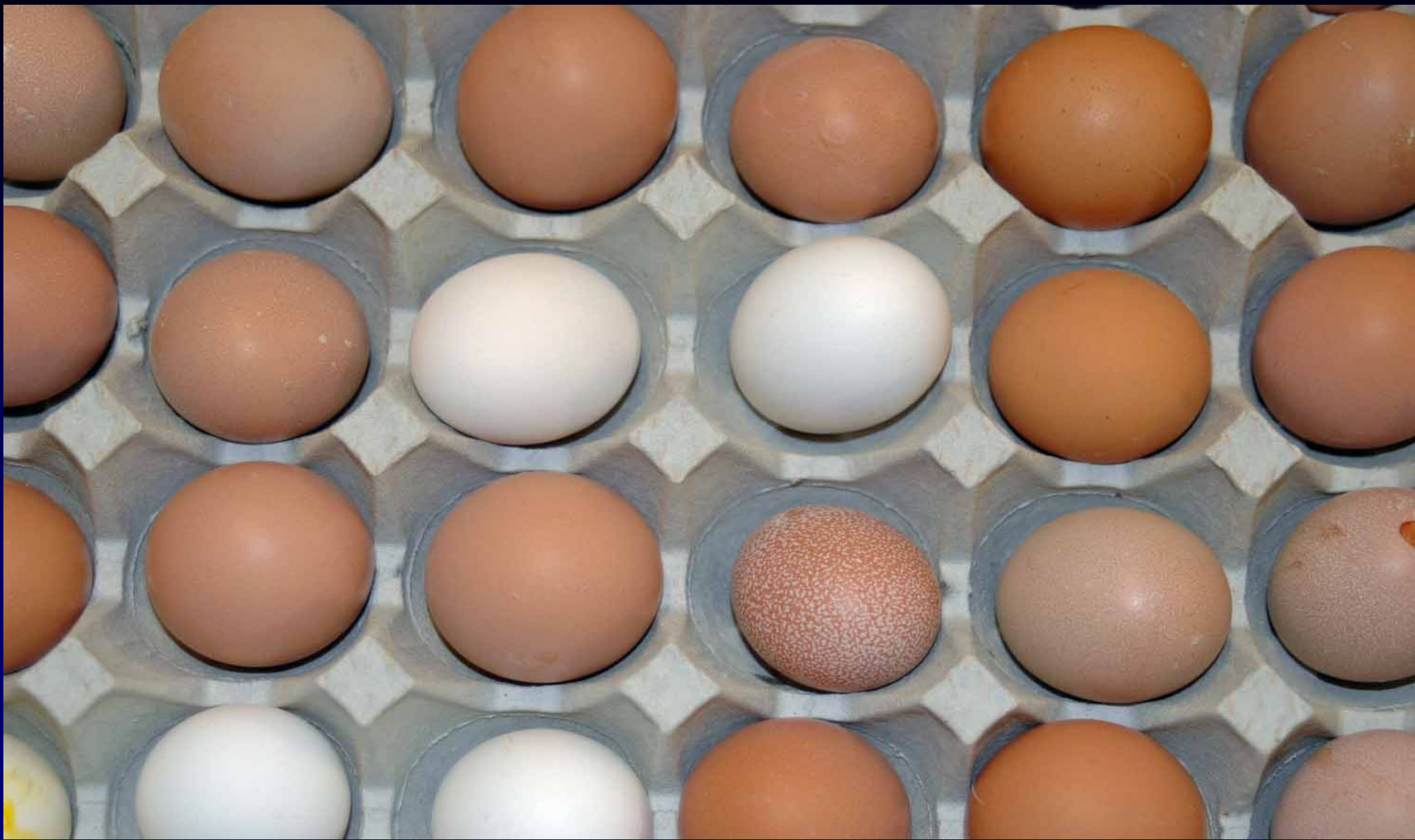




Egg Type

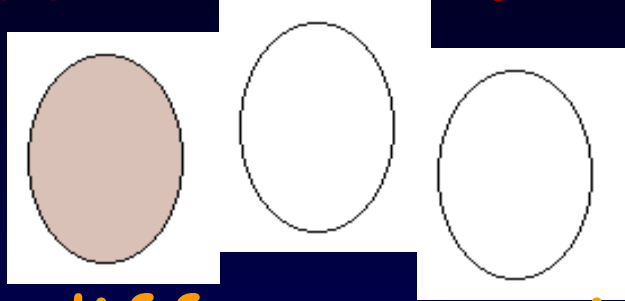


- Breed - White Leghorn
- Especially noted for the production of eggs.
- The most common egg laying breed with white shelled eggs.





Brown versus White

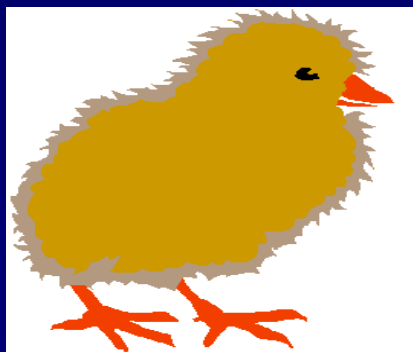


- There is no difference in taste or nutritional composition between brown and white eggs.
- Chickens with red earlobes lay brown eggs.
- Chickens with white earlobes lay white eggs.



Color Sexing

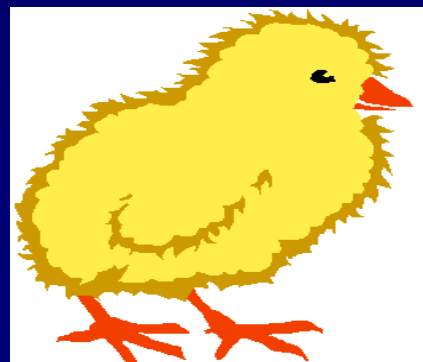
- Sexing chicks is difficult - using color is much easier.
- The crossing of Plymouth Rock Columbian hens with New Hampshire roosters produces:



Brown Coloring



Female



Yellow Coloring



Male



You could win a Little Egg Chicken Tractor!

Enter now for your chance to win a Little Egg Chicken Tractor from www.GardenEggs.com. The Little Egg

Chicken Tractor has an attached run that measures 105 inches long, 26 inches wide and 24 inches tall. The coop measures 25 inches wide, 32 inches long and averages 33 inches tall and has two roosts and accommodates up to five hens. The Little Egg will fit through most standard yard gates. Approximate retail value \$375.

GRIT
gear



www.Grit.com/Grit-gear

NO PURCHASE NECESSARY. A PURCHASE WILL NOT INCREASE YOUR CHANCES OF WINNING. OPEN TO LEGAL RESIDENTS OF THE UNITED STATES OR CANADA (EXCLUDING QUEBEC, WHERE THE PROMOTION IS VOID). ENTRANTS MUST BE 18 YEARS OF AGE OR OLDER. VOID IN PUERTO RICO AND WHERE PROHIBITED. SWEEPSTAKES BEGINS 4/8/10 AND ENDS 6/8/10. SEE OFFICIAL RULES ONLINE AT WWW.GRIT.COM. SPONSOR: GRIT, 1503 SW 42ND ST., TOPEKA, KS 66609.













University of Illinois Poultry Farm & Program

- Three breeds - New Hampshire, Plymouth Rock Columbian, White Leghorn
- Approximately 3000 egg laying hens.
- Approximately 900 breeding birds.



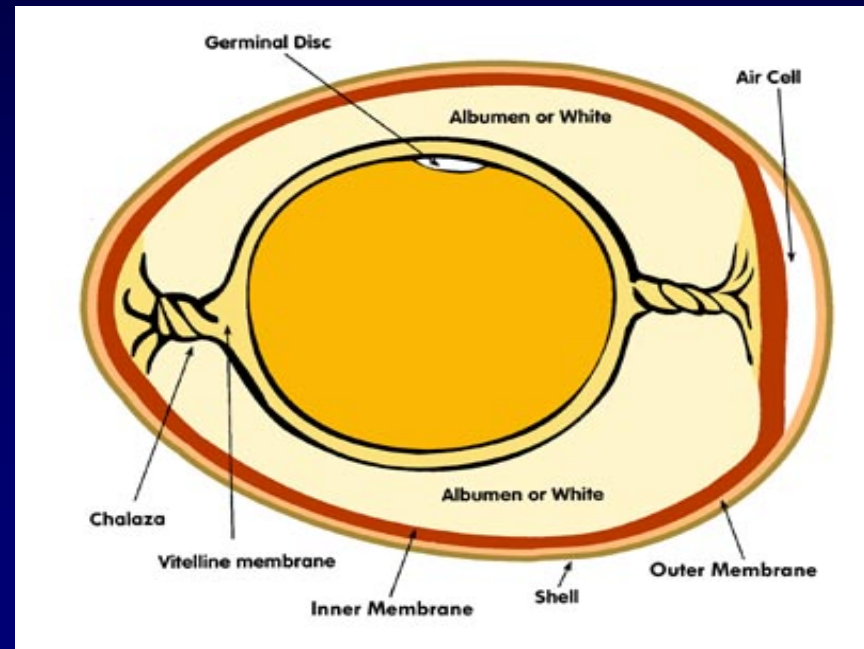




Video

- An Incredible Egg Making Machine

- Meat spot
- Blood spot
- Parts of fresh egg
- Fertilization

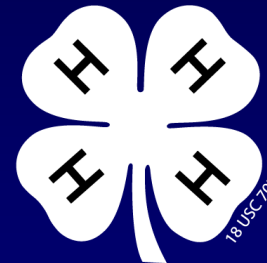




I ILLINOIS

Extension

**COLLEGE OF AGRICULTURAL, CONSUMER
& ENVIRONMENTAL SCIENCES**



University of Illinois ~ U.S. Department of Agriculture ~ Local Extension Councils Cooperating
University of Illinois Extension provides equal opportunities in programs and employment.

If you need a reasonable accommodation to participate in any program, please contact the county Extension Office. Issued in furtherance of Cooperative Extension work, Acts of May 8 and June 30, 1914, in cooperation with the US Department of Agriculture by the Director, Cooperative Extension Service, and University of Illinois.

© Copyright 2018 University of Illinois Board of Trustees