

CARROLL County 2024



Drawing by
Adalyn
Chadwick Achievers

Carroll County 4-H 2024 Cloverbud Showbook

Carroll County 4-H Show
August 3-10 | 2024
Fairgrounds, Milledgeville



Illinois Extension
UNIVERSITY OF ILLINOIS URBANA-CHAMPAIGN

UNIVERSITY OF ILLINOIS EXTENSION STAFF

Karla Belzer, County Director
Martha Ebbesmeyer, 4-H Youth Development Educator
Danielle Gapinski, 4-H Youth Development Educator
Jane Shaw, 4-H Program Coordinator

Mary Sheridan, Office Support Specialist
Bruce Black, Horticulture Educator
Susan O'Connor, Marketing Program Coordinator
Jean Eggemeyer, Office Support Associate

UNIVERSITY OF ILLINOIS EXTENSION COUNCIL

Lee Reese
Deann Kramer
Karen Stenzel
Marcia Zell
Jennifer Lang

Daniel Swihart
Emily Zimmerman
Melissa Feit
Teresa Galloway
Gordon Kelm

AJ Segneri
Eileen Piper
Cilvia Rivera
Mark Ward
Abbey DeShane

University of Illinois Extension, Carroll County
642 S East St, Mt Carroll IL 61053
(815) 244-9444 janeshaw@illinois.edu

If you need a reasonable accommodation to participate in the 4-H Show, please contact the Carroll County 4-H office at least two weeks prior to the event.

2023-2024 4-H CLUBS & LEADERS

Carroll County Kids

Shelley Turnbaugh
Melinda Merboth
Kelly Kruse

Chadwick Achievers

Sandy Imel
Lindsay Ebersole

Clever Clovers

Taylor Carroll
Stephanie Schultz
Augusta Witt

Milledgeville Hotshots

Sara Thorngren
Bryan Hollewell

Thomson Sandburrs

Teresa Duggan
Marc Johnson



Illinois Extension
UNIVERSITY OF ILLINOIS URBANA-CHAMPAIGN

COLLEGE OF AGRICULTURAL, CONSUMER AND ENVIRONMENTAL SCIENCES
University of Illinois | U.S. Department of Agriculture | Local Extension Councils Cooperating
University of Illinois Extension provides equal opportunities in programs and employment.
If you need a reasonable accommodation to attend, call the registration office.
Early requests are strongly encouraged to allow sufficient time to meet your needs.



Illinois Extension
UNIVERSITY OF ILLINOIS URBANA-CHAMPAIGN

University of Illinois Extension
Carroll County
642 S East St
Mt Carroll IL 61053
(815) 244-9444
www.extension.illinois.edu/clw

Dear 4-H Cloverbud Members, Leaders and Parents,

The 2024 4-H fair season is upon us!

We understand that fair season is a very exciting, but sometimes stressful time of the 4-H year. The 2024 Cloverbud Show Book is a resource that will help you as you prepare to showcase your Cloverbud project. This tool includes: general Cloverbud information, the 4-H show schedule, and what to expect the day of the show. The Cloverbud years are all about exploring new things and trying new ideas. As far as picking a project, almost anything goes. Choose a topic or a pet they love and do a poster or a 3D model. Sewing, crafts, hobbies and drawings are all good ideas. Really, anything they have done and can talk about to the judge is good. Still need inspiration, contact the Extension office for more ideas and resources.

Our staff is always here to support you. If you have any questions, feel free to call the Extension Office. We are here to help you! Reading this book in advance, being familiar with our show guidelines and seeking clarification helps you build a better show experience for everyone.

We are looking forward to a great season of 4-H shows! Remember, judging is a learning experience. Showing your project at the show is not the end of your learning, nor does it measure all the learning or fun you experienced in the 4-H project. The show is only one measure of success. Recognizing how much you have learned and being proud of your accomplishments are important rewards. We are proud of you and your accomplishments and hope you are too! We encourage you to invite your family and friends to witness your 4-H accomplishments at the show.

Good Luck & See you at the fair!

Sincerely,

Jane Shaw
4-H Program Coordinator
Carroll County

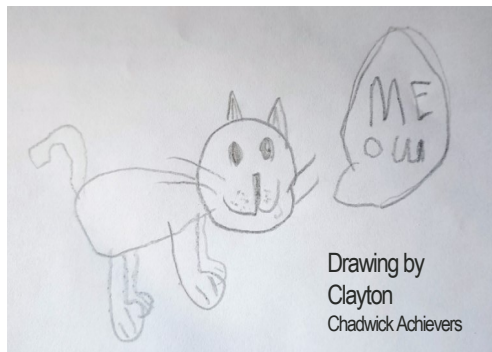
University of Illinois at Urbana-Champaign

College of Agricultural, Consumer & Environmental Sciences
University of Illinois, U.S. Department of Agriculture, Local Extension Councils Cooperating
University of Illinois Extension provides equal opportunities in programs and employment.

extension.illinois.edu

TABLE OF CONTENTS

- 4-H Show Schedule.... pg 5
- General Information.... pg 7
- Fair Entry Instructions.... pg 8
- 4-H Code of Conduct.... pg 9
- 4-H Emblem, Motto and Slogan.... pg 11
- 4-H Pledge.... pg 11
- What to expect on Show day.... pg 12



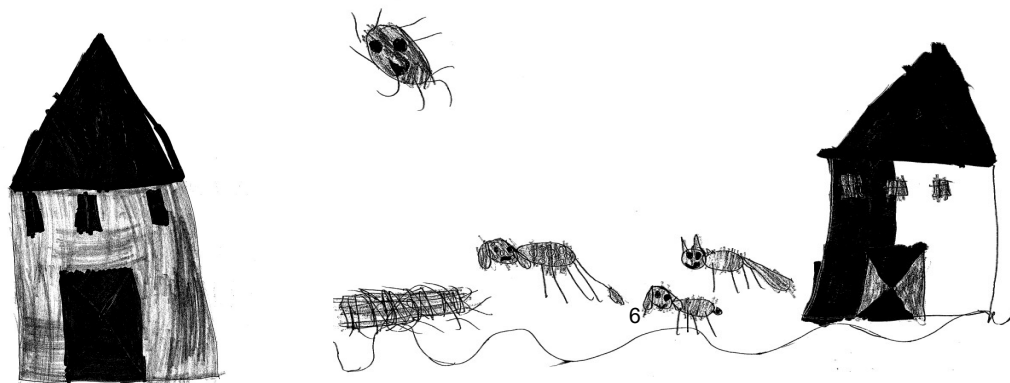
2024 4-H Schedule

Schedule is subject to change.

ALL ages are as of Sept 1, 2023

	<u>Saturday, June 29</u>
9:00 am	Dog Judging – Granny Rose Center, Dixon
	<u>Thursday, July 11</u> (Rain Date: Sun July 14)
8:00 am	Horse & Pony Check-in – Whiteside County Fairgrounds
8:30 am	Horse & Pony Judging
	<u>Monday, July 29</u>
6:30 am	Final Weigh-In for Beef Carcass Class – Mville Vet Clinic
	<u>Friday, August 2</u>
7:00 am	Beef Carcass Judging – Johnson Processing Chadwick
	<u>Saturday, August 3</u>
8:00-8:30 am	Cloverbud Projects Check-In - Commercial Building
8:45 am	Cloverbud Judging
8:00-8:30 am	General Projects Check-In – 4-H Building
8:45 am	General Projects Judging
	State Fair winner Information Table Open following judging
	<u>Sunday, August 4</u>
1:00 pm	Poultry must be on grounds - health papers will be checked
1:30 pm	Poultry Judging – Poultry Barn
5:00 pm	All beef must be on grounds, except Bucket Calf
5:00-6:00 pm	Beef Feeding Weigh-In - health papers will be checked
6:00 pm	All swine must be on grounds
6:00-7:00 pm	Swine weigh-in and check health papers
	Outstanding Swine Exhibitor: phases 2,3,4
	<u>Monday, August 5</u>
7:30 am	Beef Bucket Calves must be on grounds
7:45 am	Beef Bucket Calf Records Due to Committee
8:00 am	Beef Breeding Judging Followed by Beef Bucket Calf Project Followed by Beef Feeding Followed by Carcass Class Awards Beef Showmanship: (8-18 yrs old ONLY) Master Showmanship Contest – Part 1
9:15 am	Cats must be on grounds
9:30 am	Cat Judging – Pavilion across from 4-H Building

	All ages are as of Sept 1, 2023
10:45-11:00 am	Rabbit Check-In
11:00 am	Rabbit Judging – Rabbit Barn
12:00 pm	Goats must be on grounds
12:30 pm	Goats Judging – Sheep Barn Open Showmanship – any 4-H member (8-18 yrs old ONLY)
1:00 pm	Sheep must be on the grounds; weigh-in
1:30 pm	Sheep Judging – Sheep Barn (follows goat show) Open Showmanship – any 4-H member (8-18 yrs old ONLY) Master Showmanship Contest – Part 2
2:00-3:00 pm	Committee Meeting; post weights Outstanding Swine Exhibitor Class
3:30 pm	Swine Judging – Swine Barn Open Showmanship - any 4-H member (8-18 yrs old ONLY) Master Showmanship Contest – Part 3 Outstanding Swine Exhibitor : Phase 1
7:00 pm	Livestock & Small Animal Auction: Sponsored by: Carroll County Youth In Ag Foundation – Swine Show Ring
Noon	Wednesday, August 7 **Exhibits going to State Fair are released
8:30 am	Thursday, August 8
9:00 am	Dairy must be on grounds
	Dairy Judging
	Friday, August 9
All Details have been shared with those who qualified	Carroll County’s Day at State Fair – Springfield, IL
	Saturday, August 10
7:00 pm	All exhibits are released; pick up exhibits at the 4-H Building

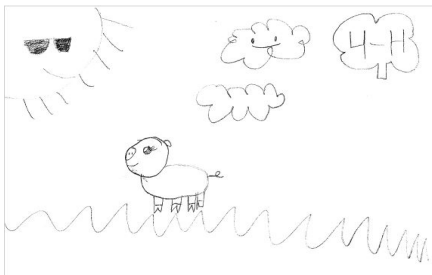


Drawing by
Ashton
Chadwick Achievers

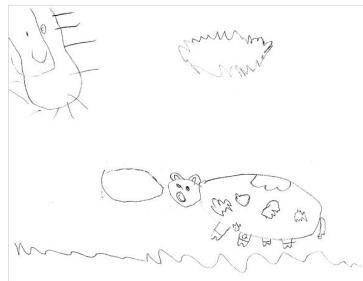
General Information for Cloverbud Exhibits

1. The Cloverbud 4-H year is from September 1 to August 31.
2. Any youth who is at least 5 and not yet 8 years of age as of September 1 of the current program year can enroll in the 4-H Cloverbud program.
3. To be able to exhibit a Cloverbud project, members must be enrolled in *Zsuite* with the *Cloverbud Project* selected.
4. Family members and leaders are encouraged to assist Cloverbud members with their projects, but not do the projects for them.
5. Cloverbud members can exhibit one project at the 4-H fair. This project will be submitted in *Fair Entry* between May 15 - July 1.
(See instructions on following page).
6. Cloverbud members do not participate in competitive judging. All participants will receive a participation ribbon.
7. Cloverbud exhibits are not eligible for premiums.
8. Cloverbud members are NOT allowed to show live animals and under no circumstances are they allowed into a show ring with live animals.
9. Exhibits should be made during the current 4-H year (between September 1 and the Cloverbud Show date).
10. Cloverbud members will participate in conference interaction (telling a "judge" about their project and answering questions).
11. If a Cloverbud needs a reasonable accommodation to participate, call the office (815) 244-9444.
12. University of Illinois Extension staff or their volunteers do not assume liability for loss, theft or damage to any exhibit.

Drawing by Dylan
Chadwick Achievers



Drawing by Payton
Chadwick Achievers





FairEntry.com

4-H Fair ENTRIES - Deadline to enroll in the General Projects and Animals/Livestock **July 1**

Family Instructions to Enroll in Exhibits

1. Go to FairEntry Website: <http://carroll4-hfair.fairentry.com>
2. Go to "Create a FairEntry Account". *Note: If you receive a message that your email already has an account, go back to the sign in screen and choose "Forgot your password?". This will reset your account and allow you to continue.*
3. Enter the email address you wish to use for this account. *Note: Our enrollment and entry systems no longer integrate.*
4. Use your family's last name as account name.
5. Complete the account information, including your cell phone number, and create a password.

SECTION 1 – EXHIBITORS TAB

1. Once logged in and on Welcome screen, select "Begin Registration."
2. Click on "Individual" on the next screen and you will then need to complete the required information as requested. Click "Continue" to move through the screens.
3. Once personal data is entered, click on the green "CONTINUE" box.
4. **IMPORTANT!! THIS DOES NOT MEAN THAT YOU ARE REGISTERED FOR FAIR! YOU MUST CONTINUE THROUGH THE FOLLOWING STEPS AND CHOOSE CLASSES YOU PLAN TO EXHIBIT!**
5. Click green "Continue" box in bottom right corner.
6. If all information is correct, click green "Continue to Entries" in top right corner.

SECTION 2 – ENTRIES TAB -- MAKING AN ENTRY

1. Click on the green "Add an Entry" or "Begin work on a new invoice".
2. Follow the screens to continue selecting your project entry.
3. Click "Back to Entries."
 - o You have three options: 1) Add another entry for the same 4-H member OR, 2) Register another exhibitor OR 3) "Continue to Payment" (Choose this option ONLY if you are done adding entries and exhibitors). **When adding another entry, select "Add another Entry" and then select the light blue "Change" button to choose a new entry. This will NOT impact the previous entry.**

***NOTE: If there are any questions that need to be answered for a class, you will see a light blue box indicating incomplete items. You will need to click on "Review/Complete Outstanding Records" to complete any questions before you can continue to payment.

SECTION 3 – PAYMENT TAB

1. The Carroll County 4-H Fair does not charge entry fees or pen/stall fees. However, please continue with the payment tab to complete your entries.
2. Click the green "Continue" button until you see the green "Submit" button.
3. The Extension Office will approve or reject your entries. You will be sent another email accordingly.

ADDING NEW CLASSES FOR PREVIOUSLY REGISTERED YOUTH

1. Log in to Fair Entry.
2. Choose "Begin work on a new invoice" button.
3. Choose "Create Entry" next to your exhibitor's name.
4. Follow directions starting with SECTION 2 of these directions.



Drawing by Asher Thomson Sandburrs

4-H CODE OF CONDUCT

The opportunity to participate in or attend 4-H activities is a privilege and not a right. All 4-H participants – youth, families, volunteers, and Extension staff – who participate in or attend any activity or event sponsored by the University of Illinois Extension 4-H Youth Development Program are expected to uphold the values of the Illinois 4-H program and conduct themselves according to the following standards. These standards also apply to online 4-H activity, including social media and internet presence. Our first priority is to create a safe, inclusive space for learning, sharing and collaboration that is welcoming to people from diverse backgrounds, cultures, and perspectives. Diversity includes, but is not limited to: race, color, religion, political beliefs, national or ethnic origin, immigration or citizenship status, sex, gender identity and expression, transgender status, sexual orientation, age, marital or family 108 status, educational level, learning style, pregnancy, physical appearance, body size, and individuals with disabilities.

1. **Create a Welcoming Environment for All.** Encourage everyone to fully participate in 4-H. Recognize that all people have skills and talents that can help others and improve the community. Though we will not always agree, we must disagree respectfully. When we disagree, try to understand why.
2. **Bring Your Best Self.** Conduct yourself in a manner that reflects honesty, integrity, self-control, and self-direction. Accept the results and outcomes of 4-H contests with grace and empathy for other participants. Accept the final opinions of judges and evaluators. Be open to new ideas, suggestions, and opinions of others.
3. **Obey the Law.** Commit no illegal acts. Do not possess, offer to others, or use alcohol, illegal drugs, or tobacco products which include e-pens, e-pipes, e-hookah, e-cigars, JUULs, vapes, vape pens or other electronic nicotine delivery systems., . Do not possess or use weapons or firearms except as expressly permitted as part of supervised 4-H shooting sports programming. Do not attend 4- H activities under the influence of alcohol or illegal substances.
4. **Honor Diversity – Yours and Others’.** Respect and uphold the rights and dignity of all persons who participate in 4-H programs.
5. **Create a Safe Environment.** Do not carelessly or intentionally harm or intimidate anyone in any way (verbally, mentally, physically, or emotionally). Do not engage in romantic displays or sexual activities in either public or private situations. Be kind and compassionate toward others. Do not insult, harass, or bully others or engage in other hostile activities. Be considerate and courteous of all persons and their property.
6. **Be a Team Player.** Work cooperatively with all individuals involved in 4-H programs and activities. Be responsive to the reasonable requests of the person in charge. Respect the integrity of the group and the group’s decisions.
7. **Participate Fully.** Participate in and contribute to planned programs, be on time and follow through on assigned tasks/responsibilities in a manner that fosters the safety, well-being, and quality of the educational experience for self and others. Have fun!
8. **Watch What You Wear.** Use good judgment. Wear clothing suited for the activity in which you will participate. Dress in a manner that is respectful to yourself and others. Clothing that displays or promotes violence, obscenity, illegal activities, discrimination, or intimidation is prohibited. Do not wear revealing clothing, such as short skirts or shorts, midriff-baring tops, or anything showing undergarments.
9. **Be a Positive Role Model.** Act in a mature, responsible manner, recognizing you are role models for others and that you are representing both yourself and the University of Illinois Extension 4-H Youth Development Program. Be responsible for your behavior, use positive and affirming language, and uphold exemplary standards of conduct at all 4-H activities.

CONSEQUENCES Any of the following may be used, depending on severity of the situation:

1. Participant will receive a verbal warning.
2. Participant may remain at the event/activity but may be barred from future events.
3. Participant may be asked to leave the event/activity. If the participant is a youth, the parent(s) will be called, and the youth will be sent home.

4-H Club Emblem



The four-leaf clover with the letter "H" on each leaf, which stands for Head, Heart, Hands, and Health.

The colors of the emblem are green and white.

4-H Motto

"To make the best better."

(This motto challenges everyone involved in 4-H to do the very best job they can.)

4-H Slogan

"Learn by doing."

4-H Pledge

I pledge

MY HEAD

to clearer thinking,

(Right hand points to forehead)



MY HEART

to greater loyalty,

(Right hand over heart)

MY HANDS

to larger service, and

(Arms slightly bent, palms up)



MY HEALTH

to better living,

(Arms at side)

for **MY CLUB,**

MY COMMUNITY,

MY COUNTRY,

and **MY WORLD.**

4-H Cloverbud Show

What to Expect on Show Day

YYou have been learning a lot of new things about your 4-H project, either on your own, with a group, or with your family. At the Cloverbud Show, you'll get the chance to show off something you have created this year and tell an adult all about it. It might be a little scary at first, but here is what to expect on Show Day...

WHAT HAPPENS AT THE SHOW?



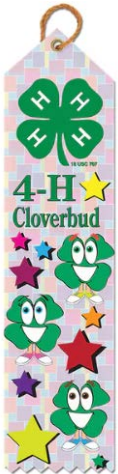
WWhen you arrive at the 4-H Cloverbud Show, check in at the registration table. You will tell the volunteer what project you have brought. Then, you will be given your exhibit tag and directed to your judging area. The tag will need to be attached to your project.

Next: When it is your turn, you will meet individually with the "judge" and talk about your project.

WHAT WILL THE JUDGE ASK?

The judge will probably ask how you made the exhibit, what steps you used, and what materials you used. They may ask you what you learned. They may ask what areas you had trouble with. They may ask if you had fun!

The most important thing is to tell the truth. If you don't know an answer, simply say, "I don't know." If you got help from your family, tell the judge that, too. You are encouraged to work with your club or family on your project.



GETTING A RIBBON

YYou will be spending time working on your exhibit, so 4-H rewards you for all you've learned by giving you a special Cloverbud ribbon.



Connect the

CLOVER

26 ●

27 ●

25 ●

2 ●

4 ●

24 ●

1 ●

5 ●

23 ●

21 ●

22 ●

7 ●

8 ●

6 ●

20 ●

16 ●

13 ●

9 ●

19 ●

17 ●

12 ●

10 ●

18 ●

11 ●

15 ●

14 ●

See you next year!



Illinois Extension

UNIVERSITY OF ILLINOIS URBANA-CHAMPAIGN

Carroll County
642 S East St
Mt Carroll IL 61053
815-244-9444
janeshaw@illinois.edu

go.extension.illinois.edu/clw

University of Illinois College of Agricultural, Consumer and Environmental Sciences
· United States Department of Agriculture · Local Extension Councils Cooperating

University of Illinois Extension provides equal opportunities in programs and employment.
Contact the Extension office if you need a reasonable accommodation to participate in this program.
Early requests are strongly encouraged to allow sufficient time to meet your needs.