



Lawrence County 4-H Clover Chatter

February 2022

To Make the Best
BETTER



Tara Buerster
County Director

Samantha Gaither
Youth
Development Educator

4-H Program
Coordinator

Debbie Buchanan
Office Support Assistant

Lawrence County:

10722 Cherry Blvd

Lawrenceville, IL 62439

618-943-5018

[http://
extension.illinois.edu/
elrww](http://extension.illinois.edu/elrww)

**Unit #25—Lawrence,
Richland, Edwards,
Wabash & Wayne**

University of Illinois— U.S.
Department of Agriculture—
Local Extension Councils
Cooperating University of
Illinois Extension provides
equal opportunities in
programs and employment. If
you need reasonable
accommodation to participate
in this program please contact
the Lawrence County
Extension office at 618-943-
5018.



4-H Happenings

February 2	Snowstorm in a Jar (Cloverbud series)
February 9	Making Snow (Cloverbud series)
February 12	Beef Weigh-in
February 14	4-H in a Bag—Crystal Snowflakes
February 16	Exploding Snowman (Cloverbud series)
February 23	Melting Snowman (Cloverbud series)
February 23	Public Speaking Workshop
February 28	Federation Meeting (3 pm)
February 28	Deadline for Farm Credit Scholarships And Grants

**Congratulations to Samantha Gaither on her
promotion to Youth Development Educator!**

*Samantha will continue to cover the
Lawrence County 4-H Office until a Program
Coordinator is hired.*

*Happy
Valentine's
Day*



Federation News

February 28th

3 p.m. Extension office

We will be planning the unit wide Showmanship Clinic for large animals and discussing the Spring Family Fun event. Please let Samantha know if you can make it. Hope to see you there!



4-H Online 2.0

V2.4honline.com

Registration has passed, but a few of you still need to enroll!! **Hurry and sign-up!**

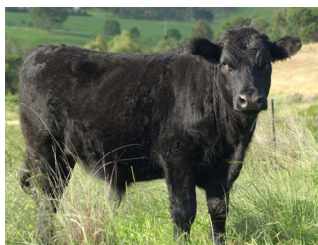
Tips for enrolling:

- 1) You must select your projects (they will not automatically show up).
- 2) \$20 program fee maybe paid by credit card or check to the office.
- 3) For multiple 4-H Members in a family paying with a credit card will need to wait 5 minutes between payments.
- 4) Youth will not be approved until payment is received.
- 6) Once approved an email will be sent to you. We will email you a link to a Google Document to order project manuals from. All manuals must be ordered before May 1, 2021.

If you have questions please contact Samantha at sgaither@illinois.edu or call the office at 618-943-5018.

Beef Weigh-In February 12th at 8 am

Lawrence County Fairgrounds



All youth enrolled in Beef that are going to show market beef at the 2022 Lawrence County fair will need to attend the beef weigh-in on Saturday, February 12. All commercial heifers (crossbreeds) will need to be tattooed during this time. If you cannot make this date, please contact Samantha at the Extension office.



Exhibition Dates

Public Speaking: April 4 Cake Decorating: June 20

Dog Care Class: July 16 General Projects: July 23

2022 Lawrence County 4-H Fair: July 30–August 5

2022 Illinois State Fair: August 11–21

2022 Lawrence County 4-H Day at State Fair: August 12

Join us for Cloverbud Winter Fun Workshops!

Join us every Wednesday in February at 5 pm on the 4-H Lawrence County Illinois Facebook page for a fun interactive workshop about snow. See the following links to register for each workshop and then pick up your supplies on the Friday before the workshop at the office.

February 2 - Snowstorm in a Jar (go.illinois.edu/LCSnowStorm)

February 9 - Making Snow (go.illinois.edu/LCSnow)

February 16 - Exploding Snowman (go.illinois.edu/LCSnowman)

February 23 - Melting Snowman (go.illinois.edu/LCMeltingSnowman)



Livestock Ownership Dates

April 15–Purebred Beef, Dairy, Heifers and Bull Calves

May 1–Market Goats, Sheep, Swine; Purebred and Commercial Does, Ewes, Rams; and all Horses

June 1– All Poultry and Rabbits

All 4-Hers entering these projects must have the animal in their possession by these dates!



4-H in a Bag – Crystal Snowflakes

Registration is now open until January 31. Youth will get all the supplies needed on February 11 at the office. Join us on Monday, February 14 on Facebook live at 2 pm to learn how to make crystal snowflakes.



Please use registration: go.illinois.edu/crystalSnowflakes

FARM CREDIT ILLINOIS AGRICULTURE SCHOLARSHIPS FOR 4-H MEMBERS

4-H members who are Illinois High School Seniors with agricultural career aspiration planning to enroll in an agriculture-based college curriculum next fall can apply for one of 30 \$2,000 scholarships. Two under-represented minority student applicants will be recognized as Diversity in Agriculture Scholars.. **Applications are due February 28, 2022.**

Access the application using the following link: www.farmcreditIL.com/scholarship

COMMUNITY IMPROVEMENT GRANTS AVAILABLE FOR 4-H CLUBS

It is time to roll up your sleeves and make a positive impact in your community! Farm Credit Illinois is inviting 4-H Clubs to apply for a \$500 grant to assist club members in being positive change agents by making their local communities better places to live. Eligible clubs are those located in one of the counties served by Farm Credit Services Illinois in Extension Units in southern & central Illinois. **Applications are due February 28, 2022.**

Access the application using the following link: www.farmcreditIL.com/community

Lawrence County Farm Bureau & Young Leader Scholarship

4-H members who are Illinois High School Seniors and are Farm Bureau (or family) members may apply for this scholarship. Applications can be picked up at the Lawrence County Farm Bureau office or contacting Samantha Gaither for an electronic version. **Applications are due March 10, 2022.**

QAEC- For members enrolled in horses, rabbits, poultry, dogs, and cats:

This would be your first year in one of the above projects.

The Quality Assurance and Ethics training is required for youth in horses, rabbits, poultry, dogs and cats. You only need to take it once in your lifetime. Those who don't complete the training will be removed from the animal science project and will not be eligible to exhibit at county fairs. The website is open year round @ web.extension.illinois.edu/qaec/. NOTE: Youth must be logged on to a computer for this program, either a desktop or laptop; not an iPad or iPhone.

This certification is a one time certification and does not need to be redone every year.

I PLEDGE ... MY HEALTH FOR BETTER LIVING



tention youth enrolled in Beef, Dairy, Goats, Sheep, and Swine! It is that time again to get certified in YQCA. For new members enrolled in these species this is a yearly certification you must complete by June 1, 2022 to exhibit livestock at the 2022 Lawrence County Fair.



There are two ways you can get certified, the first is an online course and second being a face-to-face training. If you pick the online course visit [YQCA.org](https://yqca.org) and select the online course and pay \$12. If picking the face-to-face training also visit [YQCA.org](https://yqca.org) and select in-person training and then find the date you are wanting to attend and register for it online. You must register for an in-person training online and pay the \$3 there.

If you have questions, please contact Samantha for assistance. Check out the three dates Saturday, February 19 at 9 am; Thursday, March 10 at 6 pm; Saturday, April 2 at 9 am. Youth may also attend another location within our county. Wabash County held at Extension office 2/12 at 9 am; 2/22 at 6 pm; 3/5 and 9 am. Edwards County held at Extension office 2/18 at 1 pm; 2/21 at 10 am. Wayne county held at office 1/29 at 9 am; 2/5 at 9 am; 2/10 at 5:30 pm; and 2/21 at 10:30 am.

Public Speaking Workshop

Registration link: <https://go.illinois.edu/PublicSpeakingWorkshop>

Don't freeze up on your next speech. Join us on Wednesday, February 23 at 6 p.m. in the Lawrence County Extension office for a Public Speaking Workshop. You will gain skills to give an amazing public presentation and learn the differences between speaking styles.

Looking for two general projects superintendents.

Do you have a passion for general projects and want the youth of Lawrence County to have the best opportunity and experience in 4-H? How about becoming a general projects superintendent? A superintendent would assist running the general show at the county fair. They would also work with the program coordinator to develop areas in general projects that need attention and create opportunities for youth to excel and show mastery in their projects. If you would like more information please contact Samantha at sgaither@illinois.edu

Public Speaking Workshop

Wednesday, February 23

At 6:00 PM
In Lawrence County Extension office

More Information
618-943-5018

REGISTER NOW

Illinois Extension



NOTE DATE CHANGE: (program moved from Feb. to Mar.)

Special Workshop - Intro to 4-H Air Rifle Competitions

New Date: March 19, 2022 Take your existing 4-H air rifle club to a new level! Competition training for 4-H Rifle Club leaders and up to three 4-H Club members. 10am-5pm at Central Illinois Precision Shooters in Bloomington, IL.

Contact Curt Sinclair at sinclair@illinois.edu for flyer and/or register at: go.illinois.edu/4HAirRifleTraining



2022 4-H Shooting Sports Adult Volunteer Certification Trainings

Contact your local UofI Extension office 4-H professional and they will process your registration. Certifications in Archery, Shotgun, Rifle, Pistol, Coordinator, and Hunting/Outdoor Skills (May 7 only) offered. One discipline per day/per person. All programs run 9am-6pm and are active range time instruction.

Sat., March 26, 2022 Tombstone Range, Marion, IL (southern Illinois)



GET YOUR TACKLE READY - 2022 4-H Sport Fishing Virtual Monthly Challenges Coming Soon!


Open to all current year 4-H members, but new rod & reel prizes only for 4-H members registered in the 4-H Sport fishing project for the 2021-2022 year. [Link to tournament details published in March!](#)

April – Crappie State 4-H Tournament

May – Largemouth Bass 4-H State Tournament

June – Channel Catfish 4-H State Tournament

Hint: *Sign up for 4-H Sport fishing project now*, and begin preparing for crappie contest in April by going here to begin learning about crappie: <https://www.ifishillinois.org/species/CRP.php>





Illinois 4-H
presents


VIRTUAL TOWN HALL

TUESDAY, MARCH 1 | 7:00 PM
Register by February 21: <https://go.illinois.edu/4htownhall>
Attendees will be able to submit questions as part of registration process.


FEATURED SPEAKERS



Dr. Robert Jones
Chancellor, University of Illinois
& National 4-H Council Board of Trustees



Dr. Shelly Nickols-Richardson
Associate Dean & Director
Illinois Extension



Dr. Lisa Bouillion Diaz
Assistant Dean & Director
Illinois 4-H

Illinois Extension

Save the Date – March 1, 2022



Illinois 4-H Town Hall Meeting

Join us for the first Illinois 4-H Town Hall Meeting on Tuesday, March 1 at 7:00 pm, to be held virtually. We look forward to sharing updates regarding the National 4-H Board of Trustees, Illinois Extension, and Illinois 4-H from Chancellor Robert Jones of the University of Illinois; Dr. Shelly Nickols-Richardson, Associate Dean & Director of Illinois Extension; and Lisa Bouillion Diaz, Assistant Dean & Director of Illinois 4-H. Attendees will be able to submit questions for discussion. Registration will open on February 1. Register by February 21 – <https://go.illinois.edu/4htownhall>.



Applications are now OPEN for the 2023 #4HYouthinAction Awards! Now is the chance for 4-H'ers ages 15-19 to tell their 4-H story of impact, leadership, and purpose.

Four selected recipients will:

-  earn a \$5K scholarship
-  serve as a national youth spokesperson

...and much more!

Every February, people in the United States celebrate the history and the achievements of African Americans as a part of Black History Month. Here are some ideas of how you and your club can help celebrate this month: <https://go.illinois.edu/BlackHistoryMonthFlier>.



4-H Memorial Camp- Summer Youth Camp

Are you ready to get back to camping at 4-H Memorial Camp? We are! We are planning on having four (4) Summer Youth Camps in the summer of 2022. New this year, we will have an early registration period for 4-H Members only. Watch for additional information to be shared on the 4-H Memorial Camp [website](#) and on our Facebook [page](#).

Registration Dates:

Jan. 24-Feb. 6, 2022 4-H Members Only

Feb. 7, 2022- until full 4-H Members and non-members



Camp Dates:

June 5-9, 2022

June 12-16, 2022

July 5-9, 2022

July 17-21, 2022

4-H Memorial Camp- Summer Employment

Summer camp employees wanted! If leading activities for youth campers, being a role model, working outdoors and interacting with your peers sounds like your kind of job, then you may be one of the people we are looking for. Apply to work with us this summer as we get back to Summer Youth Camping. We start accepting applications for the following positions January 1, 2022.

Summer Program Staff (18 years old minimum)

Summer/Seasonal Assistant Camp Director

Lead Male/Female Counselors

Lifeguards

Outdoor Education Director

Arts & Crafts Director

Creation Station (S.T.E.M.) Director

Recreation Director

Climbing Tower Director

Cabin Counselors (16 years old minimum)

Additional details and application materials can be found on the 4-H Memorial Camp [website](#) towards the bottom of the page under 4-H Resources.

Contact Andy Davis ardavis1@illinois.edu, (217) 762-2741 with any questions.

