

4-H FAMILY

MADISON COUNTY

DECEMBER 2024 AND JANUARY 2025

NEWS



Hello 4-H Families,

It's already December! I'm not sure where November went, but I hope you had the chance to spend time with family and friends. The 4-H staff for Unit 22 is very grateful to have you as part of our Madison County 4-H family. Happy holidays and best wishes as we head into the new year!

A reminder to submit your 4-H enrollment as soon as possible. Please send a thank-you card to our two sponsors: Madison County Farm Bureau - 900 Hillsboro Ave. Edwardsville, IL, and Southwestern Electric Cooperative - 525 US Route 40 Greenville, IL 62246 (Attn: Susan File, VP of Member Services).

More information and instructions on how to enroll are listed below.

Please don't hesitate to contact me at 618-344-4230 with any questions!

Thank you,

Meghan Cope | 4-H Program

Coordinator Serving Madison and St. Clair Counties | mawolff@illinois.edu

TABLE OF CONTENTS

Page 1-21: County info
Page 22: Calendar of events

Office Hours:

Monday- Friday: 8:00 a.m. – 4:30 p.m.
Closed Noon to 1:00 p.m. for lunch

Monroe County Office

901 Illinois Ave., PO Box 117
Waterloo, IL 62298
618-939-3434, 618-939-7708 Fax

Madison-St. Clair County Branch Office

900 Hillsboro Ave
Edwardsville, IL 62025
618-344-4230

University of IL Extension at the JJK

FAN Innovation Center

2051 Lynch Ave
East St. Louis, IL 62204
618-875-8939, 618-875-8786 Fax

Extension County Director

William Catalano

4-H Youth Educator

Emily Reece

Madison & St. Clair 4-H

Coordinator

Meghan Cope

Office Support Specialist

Nicole Hellon

Visit our website:

extension.illinois.edu/mms

Like us on Facebook:

University of Illinois Extension:
Madison County 4-H

University of Illinois Extension-
Madison, Monroe and St. Clair Unit

Follow us on Instagram:

Madison, Monroe, St. Clair- IL

2024-2025 4-H HANDBOOK

For more information about...

- Project selection
- 4-H Shows
- Member expectations
- Livestock requirements
- Where to go for questions



Check out the Madison County 4-H Handbook:

<https://go.illinois.edu/MadisonCounty4-HHandbook>.

2024-2025 4-H MEMBERSHIP POLICIES

Youth **five through seven years of age, on or before September 1** of the current 4-H year, may enroll in 4-H Cloverbud groups.

Youth who are **eight years of age and have yet to reach their nineteenth birthday on or before September 1** may enroll in 4-H clubs.

A youth who enrolls in a Madison County 4-H club must:

- **Attend at least four meetings** to be called a 4-H member. Youth who do not comply are not eligible to participate in 4-H exhibitions, receive 4-H premiums, or other 4-H awards and recognitions available to 4-H members. **(College students can be enrolled when they live away from home and must attend at least one meeting when they are home on breaks or virtually.)**
- **Present a talk or demonstration at a club meeting during the project year.**
- **Youth enrolled in a livestock market class must turn in a livestock record book by September 15. If not completed by September 15, the youth cannot participate in a livestock market class the following year.**
- Complete enrollment by **January 15 to exhibit projects at 4-H shows**. Youth may enroll after this date but are not eligible to exhibit projects at shows. Projects can be added up to this deadline, but the addition of projects is not accepted online after this date (except for SPIN Clubs).



4-H Enrollment Information

Enrollment for the 2024-2025 4-H year is OPEN!

We will again be using the Z-Suite platform to collect enrollment information.

New members, please use the instructions below to create a household account for your family and enroll youth members. Returning members, please use the same login information as last year. Adults who are screened volunteers must enroll in Z-Suites, too. If you have any questions, please email Meghan at mawolff@illinois.edu or call 618-344-4230.

There is a \$20 fee for all youth enrolled in the Illinois 4-H program. Enrollment fees will be sponsored by **Madison County Farm Bureau** - 900 Hillsboro Ave. Edwardsville, IL, and **Southwestern Electric Cooperative** - 525 US Route 40 Greenville, IL 62246 (Attn: Susan File, VP of Member Services). 4-H Clubs and Families are encouraged to send a **THANK YOU** note to both sponsors for their generosity. A \$10 out-of-county fee exists for members who do not live in Madison County.

Z-Suites

<https://4h.zsuite.org/>

Instructions to enroll:

New Members: <https://go.illinois.edu/MadisonCountyZSuiteQuickStartGuide>

Returning Members: <https://go.illinois.edu/MadisonCountyZSuiteReenrollmentInstructions>

Leaders: <https://go.illinois.edu/MadisonCountyZSuiteClubLeaderManagementGuide>

Please mark all the projects they are interested in on the youth's account. When Fair Entry comes out in April/May, that is when they will commit to what project from Z-Suites they plan to show at the 2025 fair.

The deadline to enroll to be able to show during the 2025 fair season is **January 15, 2025**. If **they are not enrolled by January 15, youth cannot show any projects for the 2025 fair season**. **4-H members can still sign up to participate in 4-H after the deadline but are not allowed to show up in the 2025 fair season.**



Check out the UPDATED Madison County Foundation's 4-H Event Scholarship!

Interested in trying a new 4-H experience but not sure about the cost? Think about applying for a 4-H Event Scholarship! The Madison County Extension Education Foundation is offering up to five half-fee scholarships for this 4-H program year for members to help cover costs to attend 4-H events such as the 4-H camp, the Illini Summer Academies, Outdoor Adventures Camp, or the Jr. Leadership Conference. Maximum scholarship amounts are \$100.

This is a “post-event” scholarship, meaning you must register, attend the event, and complete the requirements before receiving the funds for the scholarship. Applications are due 2 weeks PRIOR to an event’s registration deadline, along with a separate reference letter from your 4-H leader. (Restrictions on who can serve as a reference are noted on the application.) If a member is selected for a scholarship, they must attend the event and then, within 2 weeks following the event, provide a follow-up report on the event, what they learned, and how they plan to share the information.

Registrations for Memorial 4-H Camp will open January 13, so if you are interested in applying for the camp scholarship, the new application should be available shortly via the Madison County 4-H webpage: [4-H in Madison County | Serving Madison, Monroe, and St. Clair Counties | Illinois Extension | UIUC](#). Scroll down to Scholarships and click on the Madison County Foundation 4-H Event Scholarship link.

4-H members can only be accepted for one scholarship each program year. Should a member be selected for a scholarship but not complete the requirements, that member will not be eligible for future scholarships. Please remember that a limited number of scholarships are available each 4-H program year.





Illinois Extension



MADISON COUNTY 4-H LIVESTOCK CLINIC

Tuesday, January 28 | 6 pm
Highland Expo Hall 2025 Park Hill Dr, Highland, IL 62249 |
Cost: Free | Pizza will be provided
Register on ZSuites under events or follow the link :
<https://4h.zsuite.org/event-registrations/34487>

Requirements: closed-toe shoes
Please dress for the weather.

Learning about the following:

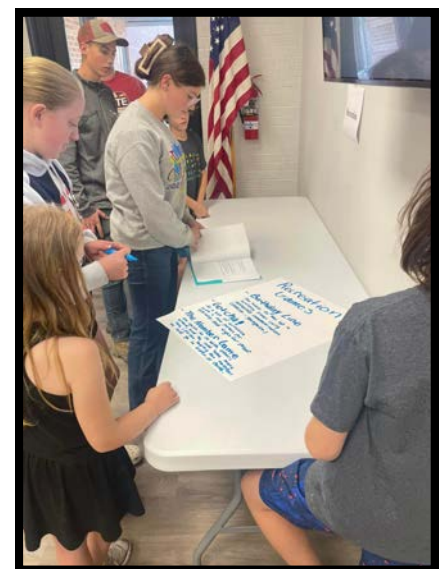
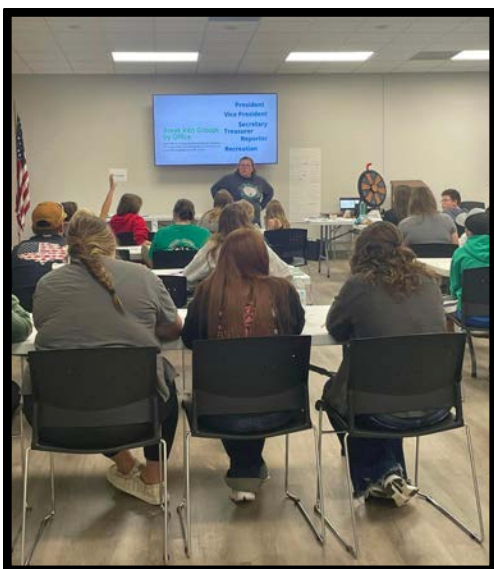
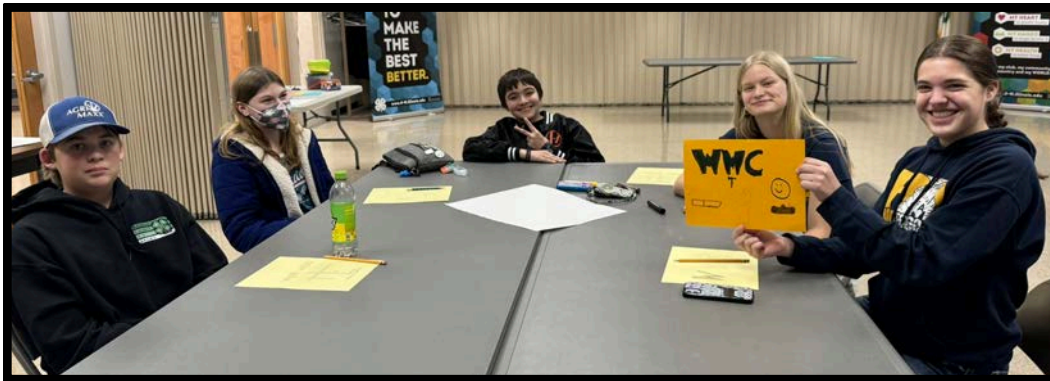
- Swine Project
- Goat Project
- Beef Project
- Ethics and Health Papers
- Livestock Records



4-H Officer Training



4-H Club Officers were invited to an Officer Training on November 11 and 25. Participants learned about leadership skills, parliamentary procedures, and more to help them become successful club officers. 4-H Youth Development Educator Emily Reece led the training.



Club Spotlight

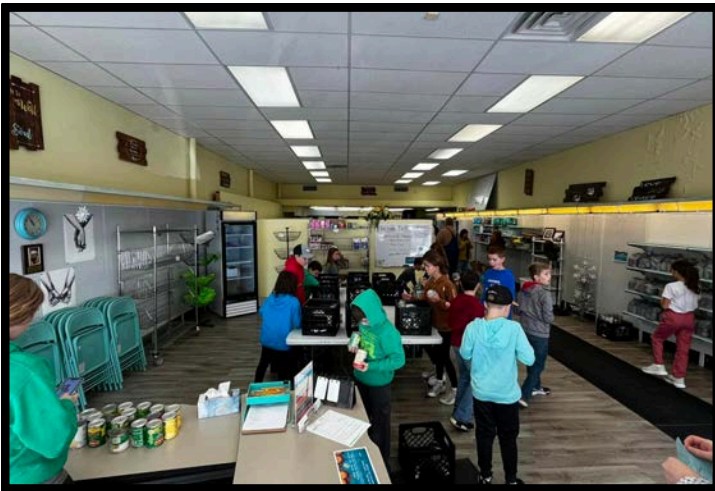
Grant Prairie held its Annual Achievement Night on November 10. Club members and their families gathered for a meal to receive their awards for the past year. It sounds like it was a fantastic night for Grant Prairie!



Club Spotlight

Prairie Youth 4-H Club volunteered at Helping Hands Food Pantry in mid-November. They worked hard to organize food items in preparation for the holidays. Great job!

**KEEP
IT
UP!**



Club Spotlight

Cloverbuds and 4-H members from Cloverleaf Ag 4-H Club enjoyed making an edible snack with graham crackers, icing, and candies to decorate at their November Meeting.



having fun



Madison County 4-H

Steer Weigh-In

Saturday, February 1 | 9 a.m. - 11:00 a.m.

Kusterman Farm
3637 Hill Rd, Highland, IL 62249



Questions: Call 217-244-4385
or email mawolff@illinois.edu

RSVP to Meghan by
January 29 by email
mawolff@illinois.edu



University of Illinois • College of Agricultural • Consumer & Environmental Sciences
University of Illinois • U.S. Department of Agriculture • Local Extension Councils Cooperating
University of Illinois Extension provides equal opportunities in programs and employment. If you need a reasonable accommodation to participate, please contact 217. 762. 2191. Early requests are strongly encouraged to allow sufficient time for meeting your access needs.

**Illinois
Extension**





March 10, 2025 at 6 pm at the Madison County Farm Bureau Auditorium

Madison & St. Clair 4-H Public Speaking Show

Illinois
Extension



I



PUMPKIN PAINTING CONTEST

Winner Announcement

Age category: Cloverbuds 5-7



1st Place

Brooke M.

Prairie Youth Cloverbuds
Madison County

2nd Place

Jack S.

Pin Oak Progressors
Cloverbud
Madison County

3rd Place

Waylon M.

Prairie Youth Cloverbuds
Madison County

**Illinois
Extension**

*Thank you for participating in the 4-H Pumpkin Painting Contest for
Madison and St. Clair Counties*



I



PUMPKIN PAINTING CONTEST

Honorable Mention

Age category: Cloverbuds 5-7



St. Jacob Cloverbuds
Madison County



Grant M.
Pin Oak Progressors
Cloverbuds
Madison County



Lizzie S.
Turkey Hill Cloverbuds
St. Clair County

**Illinois
Extension**

*Thank you for participating in the 4-H Pumpkin Painting Contest for
Madison and St. Clair Counties*



I



PUMPKIN PAINTING CONTEST

Winner Announcement

Age category: 4-H Member 8-18



1st Place

Makenna D.

Marine Stars Jr. Ag
Madison County



2nd Place

Abigail O.

Creative Critters
St. Clair County



3rd Place

Emma W.

Cloverleaf Ag
Madison County

*Thank you for participating in the 4-H Pumpkin Painting Contest for
Madison and St. Clair Counties*

**Illinois
Extension**



I



PUMPKIN PAINTING CONTEST

Honorable Mention

Age category: 4-H Member 8-18



Emma, Ava and Bryce M.

Grant Prairie
Madison County



Elsie L.

Fosterburg Ag
Madison County



Levi M.

Prairie Youth
Madison County

**Illinois
Extension**

*Thank you for participating in the 4-H Pumpkin Painting Contest for
Madison and St. Clair Counties*



Madison County Shooting Sports 4-H Clubs



Are you interested in joining a Madison County 4-H Shooting Sports Club? Below are our clubs that you can join. If you have any questions, contact Meghan Cope via email at mawolff@illinois.edu.

▼ Grant Prairie Shooting Sports

Meeting: Seasonal
Discipline- Shotgun
Location: New Douglas
Leader: Jennifer Mucklow
(j.mucklow07@yahoo.com)

▼ Open Sight Shooting Sports Club

Meeting: Seasonal
Description: Archery
Meeting Date: Every other Friday at 2:30 pm in Dorsey
Leader: Mindy Cory
(mindy.j.cory@gmail.com)

▼ Iron Sight Shooting Sports Club

Meeting Date: Seasonal
Discipline- Rifle
Location: Alton
Leader: Darrell Chrisenberry
(darrell.chrisenberry59@gmail.com)

▼ Staunton Road Rangers Shooting Sports Club

Meeting Date: Seasonal
Discipline- Pistol, Rifle, and Shotgun
Location: Edwardsville
Leader: Max and Tamsey Bremer
(maxandtams@gmail.com)



EDWARDSVILLE OFFICE UPDATE:

THE MADISON COUNTY EXTENSION OFFICE IN EDWARDSVILLE WILL BE UNDER IRREGULAR AND LIMITED OFFICE HOURS WHICH ARE SUBJECT TO CHANGE UNTIL FURTHER NOTICE.

OUR UPDATED HOURS ARE AS FOLLOWS:

 **MONDAY, WEDNESDAY, THURSDAY:**
(8:00 AM - 4:30 PM) (CLOSED FOR LUNCH 12-1 PM)

 **TUESDAY & FRIDAY:**
(BY APPOINTMENT ONLY)

FOR ANY QUESTIONS OR TO SCHEDULE AN APPOINTMENT, YOU CAN REACH US AT 618-344-4230 OR EMAIL US AT UIE-MMS@ILLINOIS.EDU.

WE THANK YOU FOR YOUR PATIENCE AND APOLOGIZE FOR ANY INCONVENIENCE.



Illinois Extension

UNIVERSITY OF ILLINOIS URBANA-CHAMPAIGN



4-H Holiday Photography Contest

Submit your digital holiday photograph by Dec. 16 to Meghan Cope via email mawolff@illinois.edu

Rules:

- Take a picture with a holiday theme.
- Photograph must be taken by 4-H member.
- 2 age groups- Cloverbuds age 5-7 & 4-H members age 8-18
- One entry per member
- Open to Madison and St. Clair County 4-H
- Prizes for 1st, 2nd, and 3rd place for both age groups!

Questions should be directed to Meghan at mawolff@illinois.edu

Winners announced and pictures displayed on county 4-H Facebook page.



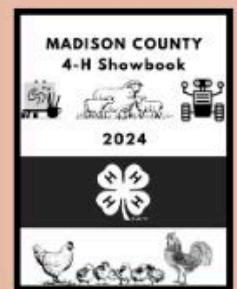
Madison County 4-H Showbook Cover Design Contest



Entries are due **Feb. 3, 2025** to Meghan Cope via email mawolff@illinois.edu.

Entry Requirements:

- "Madison County 4-H Showbook" and the year "2025" must be shown somewhere in your design.
- Use any 4-H fair or project theme.
- Must be a 4-H member. This includes Cloverbuds.
- Your artwork must be drawn or printed in black ink only.
- Your entry must be on white unlined paper.
- No entries with trademark characters/symbols other than the 4-H clover are accepted.
- Put your name and club on the back of your design in pencil.
- Design must be vertical.
- One entry per person



Illinois Extension



*Madison County Fair
Chicken Fundraiser Dance*

February 1, 2025 at 6:30 PM



Live Auction, Raffles, 50/50 & More!

Madison County Fair Expo Hall
2025 Parkhill Drive, Highland, IL 62249



Madison County 4-H shirts are available in the Edwardsville Office for \$15 per shirt!

The office is open Monday, Wednesday, and Thursday 8:00 am - 4:30 pm and closed for lunch 12 pm - 1 pm.

Tuesday and Friday!
By appointment only.

Madison County 4-H shirts available in the Edwardsville Office!



Front

Back

\$15 per shirt

There is a limited amount of youth and adult sizes.

Cash or Check ONLY

Illinois Extension



CALENDAR OF EVENTS

December 2024

- December 16 - Holiday Photography Contest Due
- December 24-Jan. 1 OFFICE CLOSED for the Holidays

January 2025

- January 15: ZSuites enrollment closes

February

- February 1 - Steer Weigh-In
- February 3 - Showbook Cover Contest Due

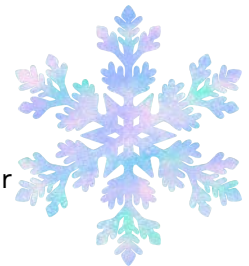
March

- March 10 - Public Speaking Contest

HAPPY
Holidays!

4-H PROGRAM WEATHER POLICY:

When Madison County schools are closed due to inclement weather, county 4-H activities will also be closed unless otherwise notified. If the weather gets bad in the evening before the event, please watch your email and Facebook for cancellations.



What's going on with Illinois 4-H?

Find out here:

<https://emails.illinois.edu/newsletter/42/1495356942.html>



Illinois Extension

UNIVERSITY OF ILLINOIS URBANA-CHAMPAIGN

COLLEGE OF AGRICULTURAL, CONSUMER & ENVIRONMENTAL SCIENCES
University of Illinois | U.S. Department of Agriculture | Local Extension Councils Cooperating
University of Illinois Extension provides equal opportunities in programs and employment. If you need a reasonable accommodation to attend, call the registration office.

