

ILLINOIS

Extension

COLLEGE OF AGRICULTURAL, CONSUMER
& ENVIRONMENTAL SCIENCES

Boone County 4-H Times

<http://web.extension.illinois.edu/bdo>



May/ June 2019

Boone County Office

205 Cadillac Ct., Suite 3
Belvidere, IL 61008
Phone: 815/544-3710
Fax: 815/544-4606

Boone 4-H Staff:

Melissa Irwin
4-H Program Coordinator
mmirwin@illinois.edu

Kelli Morrow
Office Support Assistant
kmorrow@illinois.edu

Araceli Lopez King
4-H Latino Coordinator
aracelil@illinois.edu

Unit 2 Youth Educators:

Johnna Jennings
jbjennin@illinois.edu

Unit 2 County Director:

Heather Coyle
heatherc@illinois.edu

If you need a reasonable accommodation to participate in any program offered in this newsletter, please contact the Boone County Office at (815) 544-3710.

Making Your 4-H Show Entries

It is time to start thinking about the busy summer months. Along with that comes the time to submit your 4-H Show entries. This year, all members will submit their entries online.

Boone County 4-H Fair Entry -- <https://boone4-hfair.fairentry.com/>
Entry Deadline: June 1

Club leaders have received the 2019 Boone County 4-H Show books and will be distributing those along with the Quick Tips Sheet to you at your next meeting.

So here are a few tips and notes:

- Link for 2019 4-H Show Book -- <http://web.extension.illinois.edu/bdo/downloads/42896.pdf>
- All non-livestock/non-animal projects will be listed under General Projects Day.
- Animal Science Displays — If you are in an animal project and wish to bring a poster/display to GPD, you will need to register for that under GPD-Animal Science.
- Swine Exhibitors – please have your premise id number available when making entries. This will be one of the first questions asked prior to making entries. Also, ear notches will be recorded online as well.
- Rabbit Exhibitors – please record your ear tattoos when prompted.
- This process is for 4-H entries ONLY. You must submit your Junior & Open Show Fair entries through the Boone County Fair Association.

Please call the Extension Office (815) 544-3710 or email kmorrow@illinois.edu for assistance.

2019 4-H Camp

The dates for 4-H Camp are **June 10-14** at Rock River Christian Camp in Polo, IL. There are only 4 boy spots left and a girls waiting list. Call Ogle Co. (815-732-2191) today to register.



The Boone County 4-H Program would like to extend a very special "THANK YOU" to:
Busch Farms, Belvidere, IL
for their generosity in sponsoring the funds to purchase our member's 4-H Publications for the 2018-2019 4-H year.

Help Illinois 4-H Win \$20,000



Illinois 4-H is in a national contest to win \$20,000 for Illinois 4-H members. We need YOU, YOUR FAMILY and YOUR FRIENDS to vote online. It's simple. Go to: <http://4-h.org/raise-your-hand>, Select ILLINOIS and complete the online form. The state with the most "hands raised" during this campaign wins \$20,000. So, spread the word and tell all your friends... **tweet it, post it, chat it, email it....** you can even speak it aloud!

COLLEGE OF AGRICULTURAL, CONSUMER & ENVIRONMENTAL SCIENCES

University of Illinois | U.S. Department of Agriculture | Local Extension Councils Cooperating
University of Illinois Extension provides equal opportunities in programs and employment.



Help Honor the VetsRoll Convoy

All 4-H families are invited to join the 4-H Federation to welcome home our Veterans on **Wednesday, May 22** from their Vets Roll trip to Washington, D.C. We will gather at the Belvidere Walmart at 7:45 p.m. FIND ME by the colorful 4-H Clover banner. The buses are expected to make their brief stop around 8:30 p.m. Please feel free to make your own sign or banner to welcome them home or thank them for their service. Federation will provide a few small flags as well.



FEDERATION

Date: **Wednesday, May 29 **NOTE CHANGE**
 Time: 6:30 p.m.
 Place: Boone County Extension, Suite 5

Leaders Meeting

Date: **Thursday, May 30 Please RSVP by May 28**
 Time: 6:30 p.m.

Dog Obedience Classes

Remember Dog Obedience and Showmanship classes start on May 16 at the Fairgrounds.

Class Times:

Showmanship—6:00-7:00 p.m.

Obedience — 7:00-8:00 p.m.

Classes will be every Wednesday from May 16 through July 18 with the Dog Show being held on Saturday, July 20. We will not be meeting on July 4. Anyone still needing to turn in proof of dog vaccinations, please so do prior to May 16.



State Dog Show Info

The State 4-H Dog Contest will be held Saturday, Aug. 24 at Granny Rose K-9 Enrichment Center, Dixon, IL. The show is open to 4-H members only. Members must have a “qualifying score” in their county show in order to compete at state. For more information, contact the office or check out this link: <https://4h.extension.illinois.edu/events/illinois-4-h-state-dog-show>

State Leadership Opportunities

- **Illinois 4-H Livestock Ambassador Team** — currently 10 spots available for a 2-year term (Ages 16-21). For more information and the application: <https://4h.extension.illinois.edu/sites/4h.extension.illinois.edu/files/LAT%20Application%202018-2019.pdf> Deadline: June 1st
- **Illinois State 4-H Youth Leadership Team** — currently about 5 spots available for a 2-year term (Ages 16-19). <https://4h.extension.illinois.edu/sites/4h.extension.illinois.edu/files/programs/documents/leadership/ylt-application-2017-19-typeable.pdf> Deadline according to interview location: June 7 (Illini Academies) or July 19 (Illinois State Fair)

Rabbit Clinic

Saturday, June 22 at the Extension Office Meeting Room



- Juniors Ages 8-11 Noon-1 p.m.
- Intermediates Ages 12-14 2 p.m. -3 p.m.
- Seniors Ages 15-18 4 p.m. – 5 p.m.

Come and learn about caring for and showing rabbits. **Emily Schell** will be presenting about how to prepare yourself as well as your rabbit for showmanship. The workshop has been divided by ages so that 4-H'ers will learn about what is expected at the various age levels. If a family has youth in more than one age group and you would like to attend just one session, please plan to attend the workshop for the younger member. If you need your rabbit tattooed, please bring it to the workshop, we have allowed time between the workshops for rabbits to be tattooed. If you can't make June 22, we have a make-up workshop scheduled for Saturday, July 20 from 2-3 p.m. Please call the Extension Office at 815-544-3710 to register for the clinics so we have handouts and materials for everyone.

4-H Records Workshop

Date: **Tuesday, May 14**

Other Dates: *June 10 and August 28*

Time: 7:00 p.m.

Place: Boone County Extension, Suite 5

****RSVP Required — 815-544-3710****

The workshop will be cancelled if no one is registered. Record books may not be due until September, but the time to start them is now! *4-H records are a requirement for completing the 4-H year and achieving.* Come to the records workshop and find out what you need to complete and how to fill it out. You will also learn how you can take your records to the next level and apply for county awards as well. *All members, parents, and leaders are encouraged to attend a records workshop.*





Barnyard Beat



Exhibitors of

Beef Steers • Dairy Steers • Sheep Wethers •
Goat Wethers • Swine Poultry • Market Rabbits

REQUIRED for 2019

<http://yqca.org>

Please remember that YQCA certification is REQUIRED for Boone County 4-H members raising and selling market animals. So, if you plan to auction an animal in the Livestock Auction or Fur & Feather Auction, you must complete this training. Members will be required to complete the online training by June 1st. There is a fee of \$12. When signing in, please be sure to use your 4-H Online username and password.

Note: Swine members with a valid (unexpired) Youth PQA certification may submit a copy of your certification prior to June 1st. If your PQA has expired, you MUST take the YQCA. Due to the swine show being terminal, all swine exhibitors will need to complete this requirement. If you have any questions, please feel free to contact the office, (815) 544-3710.



Beef Committee Regular Meeting & Show Planning Mtg.

Date: **Thursday, June 6**
Time: **7:00 p.m.**
Place: **Extension Office**

Boone County Beef Showdown

The Boone County 4-H Beef Committee is sponsoring a *junior* beef show on **July 14** at the Boone County Fairgrounds. Check in will be from 6:30-8:30 a.m. Showmanship will be held at 9:30 a.m. and at 10:30 a.m. the heifer show will start and that will be followed by market animal classes. Please contact the office if you are interested in volunteering at the event.

Dairy



Dairy Identification Papers—Grade & Registered

- If you will be exhibiting female grade dairy animals at the fair this year, please remember to turn in your Grade Dairy Animal Identification Forms by June 1st. The forms can be picked up at the office or found online at: <http://web.extension.illinois.edu/bdo/boone4h/2414.html>
- If you are showing registered animals you will need to turn in copies of your registration papers.

All paperwork for Grades & Registered animals is due to the Extension Office by JUNE 1.

Harvard Milk Days Dairy Show — www.milkdays.com

Dates: **Sunday, June 2**

Place: **Harvard Milk Days Grounds**

Swine Exhibitors Need Premises Id#



Premises Identification numbers will be required for all 4-H Swine Exhibitors for the 2019 Boone County 4-H Show.

Master Showmanship Competition

Friday, August 9, 5:00 P.M. ♦ Livestock Show Arena

To qualify, you must be the first place winner in the *Senior Showmanship* classes from the following species: **Beef, Dairy Cattle, Dairy Goats, Dairy Steers, Sheep and Swine**. For the general rules, please see page 53 of the 2019 Boone County 4-H Show Book.

This opportunity will give the participant a chance to broaden their knowledge about other species and showcase their showmanship abilities in the 5 species (dairy steers will not be included in the animal line up).

A special thank you to the Boone County Auction Association, NFP, Inc. for sponsoring this event. Please come out and support the participants!

Let's Get Ready to Exhibit

Requirements to Exhibit

The following requirements must be met to be eligible to exhibit at the Boone County 4-H General Projects Day and/or Boone County 4-H Fair Show:

- ✓ Enrolled in project by deadline.
- ✓ **Attendance Policy-- 4-H'ers must attend 2/3 of club meetings after enrollment, with exceptions of excused absences of illness, school or church activity. We will be checking with leaders to make sure Attendance has been met.**
- ✓ Dog & Cat Exhibitors — 1st time exhibitors — must complete QAEC online training
- ✓ Horse Project Members ONLY -- 1st time exhibitors — must complete QAEC and attend Horse Safety Clinic
- ✓ Livestock (Beef, Dairy Steers, Sheep, Swine, Poultry & Rabbits) — Members NOT selling in an auction and it's your 1st year you must complete the QAEC online training.
- ✓ Livestock (Beef, Dairy Steers, Sheep, Swine, Poultry & Rabbits) — Members who are planning to auction an animal must complete the YQCA training (exception: swine exhibitors may turn in a VALID/UNEXPIRED Youth PQA card).

4-H Premium Notice

"The Department of Agriculture shall use its best efforts to secure sufficient appropriations to fund premiums. In any year for which the General Assembly of the State of Illinois fails to make an appropriation sufficient to pay such premiums, premium amounts may not be accurately reflected in this Premium Book."

4-H Premiums - Premiums will be paid using an "X" factor based on the amount of premium money available from the state. Premium values will be based on the following "X" factors:

Animal Exhibits —

Blue	Red	White	
7X	6X	5X	Beef, Dairy, Goats, Sheep & Swine
5X	4X	3X	Dogs, Horses, Poultry, Rabbits

General Exhibit —

Blue	Red	White	
4X	3X	2X	Aerospace, Animal/Veterinary Science, Bicycle, Civic Engagement, Clothing & Textiles, College/Career Readiness, Communications, Computer Science, Consumer Education, Crops, Electricity, Entomology/Beekeeping, Floriculture, Foods & Nutrition, Forestry, Geology, Geospatial, Health, Horticulture, Intercultural, Interior Design, Leadership, Maker, Natural Resources, Photography, Plant & Soil Science, Public Robotics, Shooting Sports, Small Engines, Theatre Arts, Tractor, Video/Filmmaking, Visual Arts, Weather, Welding, Woodworking

Understanding IRS regulations —

Program Participants (including minors) will be required to provide their social security number or foreign national tax ID number prior to receiving a prize, gift or award to ensure proper IRS reporting as required by law. This sensitive information is kept confidential and handled through security protected software (PEAR). Participants will not be eligible for prize, gift or award if social security or foreign national tax ID information is not provided. *This is not a 4-H or University of Illinois directive; this is a requirement of the Internal Revenue Service.*

General Projects Day — July 13, 2019

Volunteer @ GPD

Highlights and Changes @GPD

- **Food Exhibitors** — Exhibit requirements have changed in all of the foods areas. Some of the project areas now requires an activity to be completed along side your food item. Please be sure to read the 4-H Show Book (pages 23-25).
- **Photography Exhibitors** — Exhibit requirements have changed. All photos MUST be accompanied by details of the camera settings. Please be sure to read the 4-H Show Book (pg. 30-31)
- Don't forget the "new" **Maker** class. Details on page 11 of the Show Book. Available to all exhibitors in any project area.



LEADERS, PARENTS & TEEN 4-H'ers

Secretaries and Aides Needed — We are looking for help at General Projects Day on Saturday, July 13. We need parents, leaders or your friends to help us from 8:00 a.m. to 1:30 p.m. with being a secretary for our judges or an aide in the project areas to help display the projects. If you are interested, please contact the office (phone or email kmorrow@illinois.edu) by June 1st. Please consider helping. We would really appreciate the help!

Boone County Fair – August 6-11, 2019



Highlights, Changes & Reminders:

- Animals shown in pairs classes for 4-H must be owned by one exhibitor. Family members cannot combine animals to make a pairs class.
- The Illinois 4-H Code of Conduct standards apply to online 4-H activity including social media. Read page 5 of the 4-H Show Book.

Exhibiting in the Ring

All animals must be exhibited in the show ring by the 4-H owner. See page 43 of the 4-H Show Book.

Fair Time

Swine Exhibitors

For 2019:

- Pen assignments will be **2 pigs per pen!**
- **No tack pens** allowed. All tack must be stored above the pens.



The 4-H office has always followed the policy of assigning two pigs per pen; however, upon arrival at the fairgrounds many exhibitors have taken more pens than assigned. Since, we do not have enough pens for each pig to have an individual pen, we will be enforcing 2 pigs per pen. If you have an issue housing your pigs together, you will need to figure out a way to divide your pen.

If upon arrival at the fair, 4-H staff, Swine Superintendents or Livestock Superintendents find that you have pigs in individual pens, you will be asked to move your pigs together. Thank you for your cooperation. Open and Junior Show exhibitors will be required to follow the same requirements as stated above.



State Judging Contests

Livestock

State Livestock Judging Contest will be held Monday, June 17 at the Stock Pavilion in Urbana (1402 West Pennsylvania Ave.) beginning with registration at 8:30 a.m. All participants must be checked in by 9:30. The contest will begin at 10. Get all the rules and details online @ go.illinois.edu/4HLivestock. If you are not currently participating with the Boone County Livestock Judging Team, but are interested in competing at the State Contest, please contact the Extension Office at (815) 544-3710.

Dairy

State Dairy Cattle Judging Contest. Registration begins at 9 a.m. Aug. 17 at the Illinois State Fairgrounds, and the contest begins at 10.

Poultry

State Poultry Judging Contest will be Wed., Aug. 7. Registration begins at 4 p.m. in Building 105 of the Illinois State Fairgrounds.

Contact the office (815) 544-3710 for more information!

Fair Shows & Auctions Dress Code

In order to promote a professional appearance by 4-H members, ALL 4-H members are to follow the dress code while in the show ring and sale ring. Deviations from the dress code will result in a request to change before you show or sell your animal. This dress code is not subject to personal interpretation and will be strictly adhered to. Please refer to the 4-H Show Book, page 45, for the complete dress code.

Please remember that you need to dress appropriately during all aspects of the 4-H events (weigh in, show ring and sale ring). **Good rule of thumb if you aren't allowed to wear it to school (short-shorts, spaghetti straps, etc.) then you should not wear it during a 4-H event.** Parents please help your child/young adult make the appropriate clothing decision. Thank you for your cooperation.

Annual Farm Breakfast Volunteer Opportunities Available

The 22nd Annual Boone County Farm Bureau® Foundation Farm Breakfast will be held **Saturday, June 29** at the Luckey Farm, 1704 Kelly Rd., Caledonia, IL. Breakfast will be served from 6:30 a.m. until 11 a.m.

If you or your club would like to volunteer at this year's breakfast, please contact the Extension Office, (815) 544-3710 or Ann Marie Cain, Manager at the Winnebago-Boone Farm Bureau office at (815) 962-0653.





State Fair Premium Books

The 2019 Illinois State Fair Junior Livestock Premium Book has been posted on the Illinois State Fair website: <https://www.illinois.gov/statefair/competitions/premium-books/Pages/default.aspx>

Please Note: All JUNIOR entries MUST be signed by the Extension Office prior to you sending the entries in. Please complete the forms and have them signed prior to the deadline. The following are the postmark dates entries are due to the

State Fair Entry Department Deadlines:

Horses – June 1; Livestock – July 1

Win \$1,000!

The **Superior Young Producer Scholarship Program** is offered by the Illinois State Fair to 4-H members in beef, sheep, swine, dairy, and horses as an

educational activity at the Illinois State Fair to promote youth development and personal growth. Three \$1,000 scholarships will be provided in horses, and three \$1,000 scholarships will be provided in dairy. A total of nine \$1,000 scholarships will be provided in a combined contest for beef, sheep, and swine contestants. The SYPA contest is open to 4-H members who are 14 years of age or older doing project work in the species area for which they are entering. 4-H age is determined as of January 1, 2019. Participants do not have to be exhibiting animals at the Illinois State Fair to participate in the SYPA contest. Check out the dates of each contest:

- **HORSE CONTEST:** 6 p.m., Wednesday, July 24 at the Horse Arena. Send registrations to Debra Hagstrom, U of I Extension Horse Specialist, 386 Animal Science Lab, 1207 W. Gregory Dr., Urbana
- **BEEF, SHEEP & SWINE CONTEST:** 6 p.m., Wednesday, Aug. 7 at the Livestock Center. Send registrations to Dan Jennings, U of I Extension Animal Science Educator, 1100 E. Warrenville Rd., Suite 170, Naperville, IL 60563
- **DAIRY CONTEST:** 8 a.m., Saturday, August 17 at the State Fair Livestock Center. Send registration to Dave Fischer, retired U of I Extension Dairy Specialist, 901 Oak Hill St., Trenton, IL 62293.

The contest is supported by the Illinois 4-H Foundation and its sponsors. Go to Illinois State Fair Premium Book for more information.

Boone County's Exhibit Day @ ISF – Monday, August 12

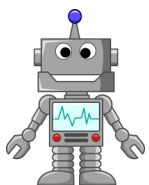
Once again, all 4-H **general** project exhibits will be housed in the Orr Building on the state fairgrounds.

WHAT WILL HAPPEN:

- **DROP OFF** your exhibit anytime from 8 to 9:30 a.m. at the Orr Building. **YOU WILL NOT NEED TO CHECK IN WITH ANYONE.**
- **CHECK THE BOARD** to see what time you should be back for judging. Members must be present for conference judging.
- **LEAVE YOUR EXHIBIT** on display throughout the day. You cannot remove it before the release time at 3:30.
- **PICK UP YOUR EXHIBIT** from 3:30 to 4:30 p.m. following the Clover Celebration. We hope all families will honor the 3:30 release time....pretty please.

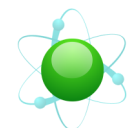
State fair age

All 4-H members (youth who were **8 to 18** years of age as of Sept. 1, 2018) can exhibit at the state fair in livestock and non-livestock project. 4-H members exhibiting in the General Project Show at Illinois State Fair must be selected as a delegate at their county 4-H show.



Robotics Camps

The Flaming Monkeys 4-H Robotics Club is sponsoring several Science & Technology based summer camps. For more information, pick up a flyer at the Extension Office or go to the Boone County 4-H website: <http://web.extension.illinois.edu/bdo/boone4h/>. All camps will be held at the Belvidere Township Building (lower level). **All ages below are as of 9/1/2018



Space STEM Camp — June 17-21	Time: 10 a.m-Noon	Ages: 8-13	Cost: \$120
LEGO Robotics Camp — June 17-21	Time: 1-4 p.m.	Ages 8-13	Cost: \$110
SCIENCE Camp — July 15-19	Time: 10 a.m.-Noon	Ages: 8-13	Cost: \$120
LEGO Robotics Camp — July 15-19	Time: 1-4 p.m.	Ages 8-13	Cost: \$110

May 2019

Sun	Mon	Tue	Wed	Thu	Fri	Sat
			1	2	3	4 Sheep Weigh 10 AM Goat Tattoo- 11AM
5	6 Driving Drill	7 Riding Drill	8	9	10	11
12	13 Driving Drill	14 Records Workshop @7PM Riding Drill	15	16 Dog Training	17	18
19	20 Driving Drill	21 Riding Drill	22 Vets Roll @7:45 PM, Walmart	23 Dog Training	24	25
26	27 Office Closed Memorial Day	28 Riding Drill	29 Federation Mtg @ 6:30 PM	30 Dog Training Leaders Meeting @ 6:30 PM	31	

June 2019

July/August 4-H Newsletter

Looking ahead to the summer months, our office will not be mailing a copy of the July/August newsletter. This issue will be emailed to all families and posted on our website.



Sun	Mon	Tue	Wed	Thu	Fri	Sat
						1 4-H Show Entry Deadline
2	3 Driving Drill	4 Riding Drill	5	6 Beef Commit- tee Mtg @ 7PM Dog Training	7	8
9	10 Records Workshop @7PM Driving Drill	11 2019 4-H CAMP Riding Drill	12 at Rock River Christian	13 Camp in Polo, IL	14	15
16	17 State 4-H Livestock Judging Driving Drill	18 Riding Drill	19	20 Dog Training	21	22 4-H Rabbit Clinics
23	24 Horse Com. Mtg. @ 6:30 PM Driving Drill	25 Riding Drill	26	27 Dog Training	28	29 Dairy Breakfast
30						