

# The 4-H Times



Marshall-Putnam

December 22– January 23

## 4-H Enrollment is Open

In order to receive premiums and /or awards at the 4-H Show in July, you must be registered in Zsuite: <https://4h.zsuite.org/> by March 1, 2023.

Members need to be enrolled in order to participate in workshops or activity days. Meeting attendance is a requirement to show at the 4-H Show in July!

## Do Registration Deadlines Apply to Me?

Whiteside County Extension answered this question. “Most definitely! We try to offer a diversity of opportunities. However, you can miss out on these if you don’t sign up or read your newsletter thoroughly. **Be sure to sign up for all workshops and project days by or before the deadline.** Deadlines are set for a reason. If there are not enough registered by the deadline, an event may be canceled. If you do not sign up, you will not know if that event is canceled, or enough materials may not be prepared when you arrive. Please help make every event this year a success - sign up in advance.”

### Why you should enroll early:

1. Your books are ordered before the first of the year
2. You are on the email list for the newsletter
3. You do not miss out on receiving information on upcoming events
4. You are covered by insurance
5. You are eligible for premiums
6. You do not forget

**Risk forms must be completed on Zsuites and Payment must be made before you will be approved.**

### PLEASE REMEMBER the State 4-H

#### Policy for Active Membership

All youth that enroll in a 4-H club/group, but fail to attend meetings, tours, workshops, or other activities sponsored by the club/group cannot be viewed as a 4-H participant/member. Therefore, the youth is not eligible to take part in 4-H exhibitions, receive 4-H premiums, or other 4-H awards and recognitions.

**Office will be closed** : November 24 and 25,  
December 22 thru Jan 3,

# Federation News

Federation will hold their next meeting on January 22 at 4pm. We will meet at the Extension office in Henry. All 4-H members 4-H ages 13-18 are invited to attend. Please contact a current member or Anne for more information. [amscheel@illinois.edu](mailto:amscheel@illinois.edu)



Registration is open for all disciplines of Shooting Sports. **Rifle, Archery, Pistol, Shotgun and Hunting and Wildlife.** Registration forms and calendar are in Zsuite. Registration, health paper and payment must be turned in the office before you will be enrolled. Mail all papers and payment to 509 Front St. Henry, Il. 61537.

## YOUTH FOR THE QUALITY CARE OF ANIMALS (YQCA)

The YQCA is a livestock quality assurance program.. It also replaces the Quality Assurance & Ethics (QAEC) program for youth in the following species; **dairy cattle, beef cattle, swine, sheep, and goats.** All 4-H exhibitors of these animals will be required to certify in the YQCA program yearly. Youth must either attend a face to face class or certify on-line via the website <https://yqcaprogram.org/>

The YQCA program is for youth ages 8-21. The online version is broken into age divisions as follows: juniors 8-11, intermediate 12-14, senior 15-18, and young adults 19-21. This certification is annual with test out options of 1-3 years.

**Please send a copy of your certificate if you did not attend an in person training. Proof of completion is required to show your animal at the 4-H Show.**

## QUALITY ASSURANCE & ETHICS (QA&E):

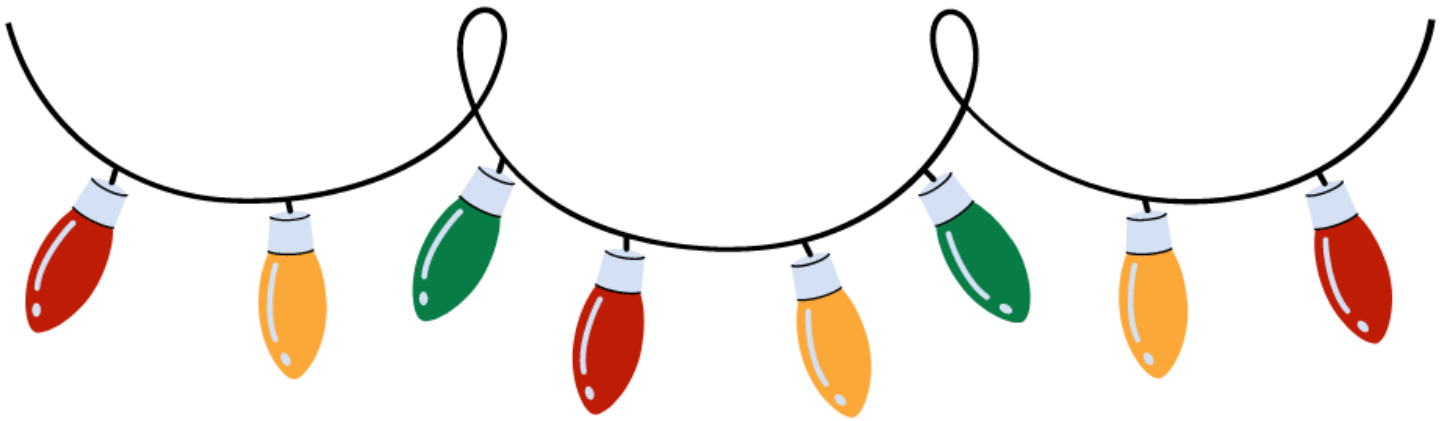
The Quality Assurance and Ethics training is required for all youth that enroll in horses, **rabbits, poultry,** dogs, and cats. Members must take the training whether they own a live animal or not. It is advised that they complete this one time as soon as they are enrolled in the project area. Counties will monitor completion of this. Failure to complete QA&E will result in the member's animal science project enrollment being cancelled and they will be ineligible to exhibit at county fairs. The website is open year round @ <http://web.extension.illinois.edu/qaec/>

NOTE: Youth must be logged on to a computer for this program, either a desktop or laptop; not an iPad or iPhone. The program cannot capture the information for county staff to see when it is completed using iPads, iPhones or cell phones.



## Dog Training

Training is required if you are planning to show your dog in Obedience, Pre-novice, Novice, Graduate novice, Pre-open, Open and Graduate open, at this year's 4-H show. Dates have not yet been selected. All members enrolled in the Dog project will be notified of dates.

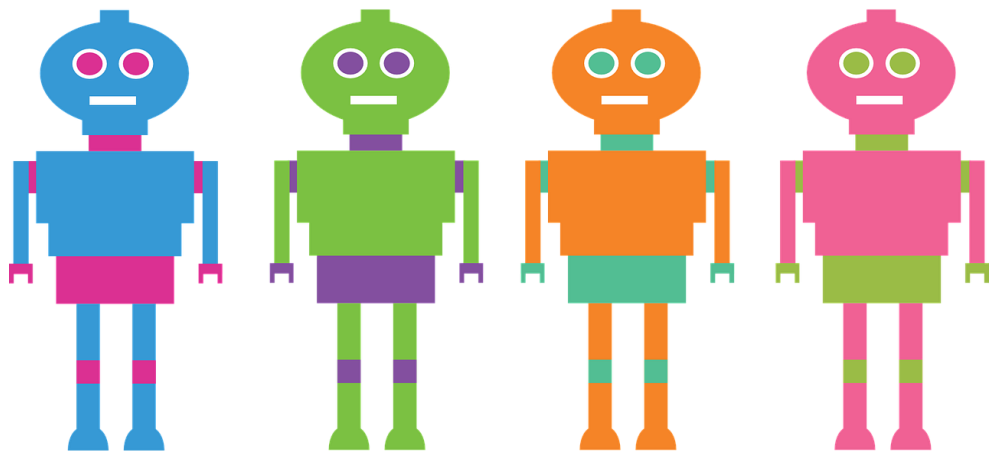


# Cloverbud Christmas!

Cloverbud Christmas for Marshall-Putnam  
4-H Cloverbuds 5-7. Join us for a Christmas  
party December 17, 10-11am. Register at  
<https://4h.zsuite.org/>. Registration is  
required. Space is limited.



Robotics season is fast  
approaching! If your  
youth is interested in  
being part of the  
2022/2023 Robotics  
Competition Team,  
and you have not yet  
received an email  
about upcoming open  
lab days and this  
year's competition  
season, please email  
Aaron at  
[ALind83@illinois.edu](mailto:ALind83@illinois.edu)



**Illinois Extension**  
UNIVERSITY OF ILLINOIS URBANA-CHAMPAIGN

If you need a reasonable accommodation to participate, please contact the event coordinator.  
University of Illinois, U.S. Department of Agriculture, Local Extension Councils Cooperating.  
University of Illinois Extension provides equal opportunities in programs and employment.