



**Illinois Extension**  
UNIVERSITY OF ILLINOIS URBANA-CHAMPAIGN

# NEWSFLASH



January 13, 2022

*Find Your Spark!*

Stephenson County  
2998 W. Pearl City Rd  
Freeport, IL 61032  
P: (815) 235-4125  
F: (815) 232-9006  
Website:  
[go.illinois.edu/jsw](http://go.illinois.edu/jsw)

• **Margaret Larson**  
County Extension  
Director

• **Brenda Heimann**  
Program Coordinator  
4-H Youth  
Development

• **Julie Miller**  
Office Support  
Assistant

Happy New Year's 4-H Families, Leaders, & Volunteers,

I hope everyone enjoyed their holiday break and are ready to start off the new year on a positive note! There are lots of 4-H things planned for this upcoming year, and I hope that you will find that right project, event or club that helps you find your spark in 4-H.

Upcoming deadlines:

- SKI DAY– Deadline to pre-register & pay is TODAY!!!- Link is enclosed.
- Poultry Clinic & Forestry Club Deadline to sign up is this Friday, January 14th. Info inside this newsletter.
- Robotics Club– If you are interested in joining our Robotics Club, call Brenda ASAP– 815-235-4125.
- 4-H Camp Counselor Application Deadline is January 28th by 4p.m.
- Beef Weigh –In pre-registration is due by January 31st..

Please make sure you are reading the Calendar of Events in each E-News. When an event is added or changed I am highlighting it in YELLOW to help bring it to your attention. If you have any questions regarding your projects feel free to reach out to your leaders or myself, we will be happy to help.

Till Next Time,

*~Brenda*



Find us on  
[Facebook!](#)



# STEPHENSON COUNTY 4-H NEWS

If you need to **ADD or DROP** a 4-H project for this year— the deadline is **February 1st**. After this date if you want to ADD a project



you will not be eligible for top honors at the 4-H show.

You can add/drop projects by logging into your 4honline account and go to your projects tab.

Any questions, please call Brenda at the Extension Office, 815-235-4125.



## 4-H Club Meetings— Attendance Policy

All 4-H members must attend 1/3 of their club meetings for the year, from the time of their enrollment, in order to show at the 4-H shows this summer. If you have questions on this, please reach out to your 4-H leader!

# STEPHENSON COUNTY NEWS

## BEEF WEIGH IN– FEBRUARY 5th

At the Lena Vet Clinic, Lena, IL

- **ALL STEERS** will need to be weighed at this time if you are showing them in the Rate of Gain class at the local shows & if you plan to take your steer to the State Premiere or non Premiere shows.
- **PRE-REGISTRATION** for a time slot is required by January 31st!

<https://go.illinois.edu/beef>



**Ownership Date for Beef Steers is  
February 1st!**

(No paperwork has to be turned in for this.)

## STEPHENSON COUNTY 4-H NEWS

# QAEC TRAININGS

**Quality Assurance and Ethics Training—** The Quality Assurance and Ethics training is required for all youth that enroll in **horse, rabbit, poultry, dog, cavy (guinea pigs), and cat**. Members must take the training whether they own a live animal or not. It is advised that they complete this as soon as they are enrolled in the project area. 4-H Members only have to complete a QAEC training once in their 4-H career, when showing a live animal or doing animal science with the above breeds.

Counties will monitor completion of this. Failure to complete QAEC will result in the member's animal science project enrollment being cancelled and they will be ineligible to exhibit at county fairs. The website is open year round at: <https://web.extension.illinois.edu/qaec/>

**Deadline is June 1st, 2022**





# STEPHENSON COUNTY 4-H NEWS

## YQCA TRAINING

It's that time of year again! If you are a 4-H Member showing: **sheep, swine, dairy, goats, or beef** you will need to do your Youth for the Quality Care of Animals (YQCA) training again BEFORE the June 1st deadline. This is for all members ages 8-18 showing livestock for a 4-H show. There are two ways you can get the training:

- 1) **You can take the online training** ( there is a test at the end) and the cost is \$12, per student. The link to do that is : [yqca.learngrow.io](http://yqca.learngrow.io)
- 2) You **MUST** use your 4-H Online information to create an account and gain access to the course. **DO NOT** use the FFA/Independent sign-in. Once completed please print 2 copies of your certificate— 1 needs to be given to the Extension office before June 1st, and the other one travels with the 4-H member to the shows.
- 3) **Instructor-led training— there will be two in-person trainings held again this year. Locations are being worked out still. The dates will be February 26th and March 26th—in the A.M.** Cost is \$3, per student and **MUST** be paid at the time of registration. **You only need to attend 1 of these in-person trainings.**
- 4) **WATCH** for more details in the next few weeks—for the in-person trainings!





## 2021-2022 Stephenson County 4-H Calendar of Events

**\*\*Some dates/times subject to change\*\***

### JANUARY 2022

1	Beef Performance Cows, Dairy Cows, & Milking Dairy Goat ownership (No paperwork to Ext. Office)
5	Extension Office Back to work from the holidays
16	Ski Day, Chestnut Mountain 1pm - close, pre-registration due Jan 13 <sup>th</sup> .
17	Extension Office Closed for Martin Luther King, Jr. Day
22	SC 4-H Ambassador Meeting, 1-2:30 p.m., HCC- Building R
22	Poultry Clinic at Farm Bureau, 10-11 a.m.
23	Ski Day- SEVERE Weather date
28	4-H Camp Counselor Applications due by 4p.m.
29	Leader's Super Saturday, at Farm Bureau from 9am-12pm
31	Program Book Artwork Contest Deadline
31	Beef Weigh in sign up deadline

### FEBRUARY 2022

1	<b>New Member Enrollment deadline</b>
1	<b>Add/Drop Project Deadline for all members</b>
1	<b>Beef Steers – Ownership (no paperwork to Ext. office)</b>
5	Beef Weigh-In, Lena Vet Clinic, 9-11am - pre-registration required
12	Inclement weather date for Beef weigh-in, Lena Vet Clinic
19	4-H State Horse Judging Contest – at Blackhawk East, Galva, IL

### MARCH 2022

16	Leader's Meeting, HCC, Building R 6 p.m.
19	Ambassadors Meeting, Rm 153- 1-2 p.m.
30	Dog Show Kick-Off Meeting, 6:30 pm, HCC, BLDG- R, 153
31	<b>Public Speaking Contest, 6 p.m. HCC</b>

### APRIL 2022

6,13,27	<b>Dog SPIN Club at the Fairgrounds, 6pm</b>
18-24	National Volunteer Week
23-24	4-H State Hippology, Horse Bowl & Speech at UIUC Campus
30	State 4-H Public Speaking Contest, Parkland Community College, Champaign, IL

### MAY 2022

1	Ownership/ Lease Deadline for Horse Show- Due to Ext. Office
4, 11, 18, 25	<b>Dog SPIN Club at the fairgrounds, 6pm</b>
15	Ownership for Sheep Wethers and ALL Meat Goats
30	Extension Office closed for Memorial Day

### JUNE 2022

1	<b>Deadline for YQCA &amp; QAEC Certification</b>
1	<b>Dairy Lease paperwork due to Extension office</b>
1	Ownership/ Lease Deadline for Dog Show- Due to Extension Office
1	Swine Ear Notch form deadline- Due to Extension Office
1	



## 2021-2022 Stephenson County 4-H Calendar of Events

**\*\*Some dates/times subject to change\*\***

1	Ownership deadline: Beef Heifers, Beef Bucket Calves, Swine- gilts & barrows, Dairy Goat Kids, Dairy Goat Yearling (not in milk), ALL Pygmy Goats, Dairy Calves & Heifers, All Poultry, Rabbits & Cavies (No paperwork to Ext. Office)
1	Dog Show SPIN Club, 6 pm, Stephenson County Fairgrounds,
14-16	4-H Camp, Daycamp- Rock River Christian Camp, Polo, IL
15	Dog SPIN CLUB – Optional Class, 6pm - Stephenson County Fairgrounds
25	Breeding Sheep Ownership deadline

### JULY 2022

4	Extension Office Closed for Independence Day
8	Dog Show SPIN Club- Final practice, 6 pm, Stephenson County Fairgrounds
9	<b>Stephenson County 4-H Dog Show, 9 am, Stephenson County Fairgrounds</b> <b>4-H Cat Show, 10 am, Stephenson County Fairgrounds, Foresight Commercial Building</b>
19	<b>Set-up at Fairgrounds for general Projects Day &amp; Fair week</b>
20	<b>General Projects Day, 8 AM at Fairgrounds</b>
22	<b>Clothing &amp; Textiles, Food Decorating, &amp; Flower Arranging Shows At Highland Community College, building TBD</b>
24-30	<b>State Fair Jr. Horse Show</b>
25	<b>4-H Shows: Crops, Foods, &amp; Horticulture 9 AM</b> <b>Stephenson County Fairgrounds- Foresight buildings</b>
25	<b>4-H Show: Cloverbuds- 1PM- Stephenson County Fairgrounds Foresight building</b>
26	<b>Stephenson County 4-H Livestock shows-Poultry, Goat, Dairy, Swine, Sheep, Beef, &amp; Rabbit / Cavy Stephenson County Fairgrounds</b>
27-30	<b>Stephenson County Fair, Stephenson County Fairgrounds</b>
30	<b>Master Showmanship Contest – 1:30 p.m. Swine Show Ring</b>

### AUGUST 2022

11-21	Illinois State Fair, Springfield, IL
13	Stephenson County State Fair Exhibition Day



# JSW 4-H SKI DAY



SUNDAY, JANUARY 16, 2022

1 PM- CLOSE

CHESTNUT MOUNTAIN SKI RESORT- GALENA, IL

4-H STAFF WOULD LIKE TO INVITE ALL JO DAVIESS, STEPHENSON, AND WINNEBAGO COUNTY 4-HERS AND THEIR FAMILIES TO EXPERIENCE A LITTLE WINTER FUN AT A DISCOUNTED PRICE.

**PURCHASE YOUR TICKETS BY:**

**STEP 1: VISIT** <https://web.extension.illinois.edu/registration/?RegistrationID=24855>

**STEP 2: ENTER THE NAME OF EACH SKIER/SNOWBOARDER AND 4-H CLUB**

**STEP 3: SELECT HOW MANY TICKETS AND WHICH PACKAGE YOU NEED**

**STEP 4: PAY BY CREDIT CARD**

**GROUP RATES: (ONCE PURCHASED YOU WILL GET A CONFIRMATION EMAIL)**

**COST TO 4-HER OR FAMILY MEMBER**

LIFT ONLY- \$40

LIFT, RENTAL, & LESSON- \$55

LIFT, RENTAL, HELMET, & LESSON- \$61

YOU MUST REGISTER AND BUY YOUR TICKETS USING OUR REGISTRATION SITE.  
(YOU WILL NOT BE ABLE TO GET THIS PRICE AT THE TICKET BOOTH)

ONLY 4-HERS AND THEIR FAMILIES ARE INVITED. IF YOU ARE MEETING NON 4-HERS AT THE RESORT, THEY WILL NEED TO PURCHASE TICKETS THROUGH CHESTNUT.

FAMILIES MUST CHECK-IN AT THE 4-H TABLE INSIDE THE RENTAL AREA ONCE THEY ARRIVE.  
(CHECK-IN WILL BE BETWEEN 12:45 PM-3:00 PM)

REFUNDS WILL ONLY BE GIVEN IF SKI DAY MUST BE POSTPONED DUE TO WEATHER OR IF YOU BECOME SICK OR MUST QUARANTINE.

IN CASE OF BAD WEATHER- EACH FAMILY WILL RECEIVE A PHONE CALL, TEXT, AND/OR EMAIL BY 8 AM SUNDAY.

## Deadline January 13

\*Bad weather date: January 23



# What you need to know before you go!



**COVID POLICIES: PLEASE READ THE FULL LIST @**  
[HTTPS://WWW.CHESTNUTMTN.COM/COVID-POLICIES/](https://www.chestnutmtn.com/covid-policies/)

- Face coverings are required in any indoor space throughout the entire resort. Face coverings outdoors are optional.
- Bars and restaurants are open. Face coverings are required to enter restaurants. At the table, they are not.
- Vista or cafeteria is open for people to just sit and wait or warm up. Face coverings are required to enter restaurants. At the table, they are not.
- Expect occupancy reduction in bars, restaurants, and the cafeteria.
- Parents may bring in coolers and snacks for their families but may only enjoy them in the vista or cafeteria area only.
- Physical distancing will be mandatory in all Chestnut buildings.

**PLEASE CALL BRENDA @ 815-235-4125 OR BY EMAIL AT**  
[BHEIMANN@ILLINOIS.EDU](mailto:BHEIMANN@ILLINOIS.EDU) **FOR QUESTIONS.**

**FOR MORE INFORMATION ABOUT CHESTNUT MOUNTAIN CONTACT**  
**SHERA BY EMAIL AT** [SHERA@CHESTNUTMTN.COM](mailto:SHERA@CHESTNUTMTN.COM) **OR 815-777-4674.**

If you need a reasonable accommodation to participate in this program, please contact the Extension Office at 815-858-2273. Early requests are strongly encouraged to allow sufficient time for meeting your access needs.



University of Illinois Extension provides educational programs and researchbased information to help Illinois residents improve their quality of life, develop skills and solve problems. If you need a reasonable accommodation to participate in this program, please call the U of I Extension office. University of Illinois Extension provides equal opportunities in programs and employment.

University of Illinois College of Agricultural, Consumer and Environmental Sciences – United States Department of Agriculture – Local Extension Councils Cooperating



# 4-H Forestry Club



**4-H "Forestry" Club will provide participants with unique, hands-on experiences which will spark youth's excitement about trees, nature, and environmental stewardship.**

**Who: Any youth currently in the 5th- 12th grades.**

**4-H Membership is not required.**

**When: Six times between March and August 2022.**

**Where: Meeting locations will vary**



**The Forestry club will help youth learn to identify trees & leaves, how to tell the age of a tree, & learn about the growth & measure of trees. If you enjoy being outdoors this club is for you!**

**Some of the highlights for the youth will be taking a hike, visiting a local sawmill & planting oak trees to simulate a savanna in a local forest!**

**To register for the Forestry Club- go to: [go.illinois.edu/forestryclub](https://go.illinois.edu/forestryclub) or call 815-235-4125.**

**Deadline to register is January 14, 2022**

If you need a reasonable accommodation to participate in this program, please contact the Extension Office at 815-235-4125. Early requests are strongly encouraged to allow sufficient time for meeting your access needs.



**Illinois Extension**  
UNIVERSITY OF ILLINOIS URBANA-CHAMPAIGN

College of Agricultural, Consumer, and Environmental Sciences  
University of Illinois, U.S. Department of Agriculture, Local Extension Councils  
Cooperating. University of Illinois Extension provides equal opportunities in programs and employment.



# Stephenson County News

## Program Cover Contest

**DEADLINE: January 31st**

Each year we have a program book that is put together for our 4-H shows that are held in the summer. The 2021-2022 theme is **FIND YOUR SPARK!!** Start planning now to help us create a new cover for our program book! The guidelines to follow are:

A fine point black marker or dark pencil works best for copying your picture, so please do NOT use colored pencils. The program book is printed in black and white.

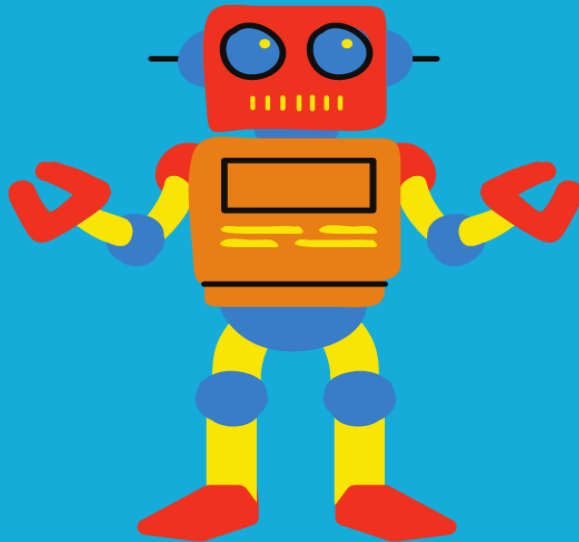
- Please make sure you have the theme title AND the current year somewhere in your drawing.
- Please make sure your text is legible and spelled correctly.
- You may bring your hard copy to the Extension Office or you can scan and email it to me. Please do NOT fax or send it as a picture.
- If you are submitting a hard copy, please include name, age, and club on the back lightly in pencil. If you are emailing it to me, please include the information in the email.



- 1st place will receive a 4-H Baseball Cap and their Picture will go on the front of our Program Book.
- 2nd place will receive a 4-H Beanie and their picture will be on the back of our Program Book.
- The rest of the pictures will be used as needed within our program book!

Let's make our Program Book look beautiful!

# ROBOTICS 4-H SPIN CLUB



Stephenson County is starting a Robotics Spin Club in January 2022!

We are looking for youth to join this club!  
Participants do NOT have to be enrolled in 4-H.  
This year's State Competition revolves around a space mission & the challenge will be held  
April 16, 2022.

Please reach out to Brenda by e-mail: [bheimann@illinois.edu](mailto:bheimann@illinois.edu) or phone: 815-235-4125 with questions or to reserve your place in the club. There are limited spaces.



**Illinois Extension**

UNIVERSITY OF ILLINOIS URBANA-CHAMPAIGN

University of Illinois Extension provides educational programs and research-based information to help Illinois residents improve their quality of life, develop skills and solve problems. If you need a reasonable accommodation to participate in this program, please call the U of I Extension office. Early requests are strongly encouraged to allow sufficient time for meeting your access needs. University of Illinois Extension provides equal opportunities in programs and employment. University of Illinois College of Agricultural, Consumer and Environmental Sciences - United States Department of Agriculture - Local Extension Councils Cooperating.



# NATIONAL 4-H CONGRESS CONFERENCE

National 4-H Congress is a once in a lifetime experience for 4-H'ers. You must be chosen as an Illinois State 4-H Award Winner in order to be asked to 4-H Congress. We had 1 Stephenson County 4-H'er that was chosen to attend this year's National 4-H Congress Conference - Michelle Marck of the Freeport Fantastics 4-H Club!!! Congratulations, Michelle on this incredible 4-H achievement!

The Conference was held in Atlanta, GA November 26-30th, 2021. The teens attended educational workshops focused on diversity, cultural experiences, leadership, team development and network with 4-H members from across the United States. They also had the opportunity to listen to and learn from nationally recognized speakers. As well as spending time doing Community Service projects in the Atlanta Metro communities.

**Congratulations, Michelle!**



# Stephenson County 4-H News

## Manual Ordering for 2021-2022!

New this year, All manuals will be ordered by the parents! Illinois 4-H has made a pop-up shop online and almost all manuals are able to be ordered through this shop. If you did not receive the instructions in the mail, please reach out to me!

If you have any questions regarding manuals, please call me direct at 815-235-4125 or [bheimann@illinois.edu](mailto:bheimann@illinois.edu)



**Are you looking for more ways to help your child learn & engage with 4-H?**

**Illinois 4-H has many resources that can help!!**

Check out the 4-H Spark Sheets—

<https://4h.extension.illinois.edu/project-spark-sheets>

And 4-H At Home—

<https://4h.extension.illinois.edu/>







STEPHENSON COUNTY 4-H

# POULTRY CLINIC

**SATURDAY, JANUARY 22, 2022  
10- 11 A.M.  
STEPHENSON COUNTY FARM BUREAU  
210 W. SPRING ST.  
FREEPORT, IL**

The day will focus on the basics of starting your  
poultry project!

The following will be covered:

- Preparing for chicks
- Feeding
- Getting started with pigeons
- Lots of general information

For more information contact Rita Koch at 815-449-2910  
Please RSVP to the Stephenson County Extension Office at <http://go.illinois.edu/jsw>  
or call (815) 235-4125 by Friday, January 14 by 4 p.m.



**Illinois Extension**

UNIVERSITY OF ILLINOIS URBANA-CHAMPAIGN

University of Illinois Extension provides educational programs and research-based information to help Illinois residents improve their quality of life, develop skills and solve problems. If you need a reasonable accommodation to participate in this program, please call the U of I Extension office. Early requests are strongly encouraged to allow sufficient time for meeting your access needs. University of Illinois Extension provides equal opportunities in programs and employment. University of Illinois College of Agricultural, Consumer and Environmental Sciences - United States Department of Agriculture - Local Extension Councils Cooperating.

# LENA LUCKY CLOVERS

## 4-H REPORT for January



Meeting was held on January 4. Enrollment and project change are due by February 1.

February 4 is going to be our hands on night. Any one interested in running a station let Jamie or Kristi know. No more than 2 or 3 leaders per station.

Poultry clinic is January 22. Emails will be sent out.

February 5 is beef weigh in at nine, snow date is February 12. Registration is due on February 3 March is super Saturday sign in will full fill up fast.

We broke up into groups and the first half the second half played flip cup TicTacToe. No one did talks or demos.

Franklin Leverton  
4-H Reporter





# 4-H Camp—June 14, 15, 16

## NORTHERN ILLINOIS 4-H SUMMER DAY CAMP



**Illinois Extension**  
UNIVERSITY OF ILLINOIS URBANA-CHAMPAIGN

**JUNE 14, 15, 16**

ROCK RIVER CHRISTIAN  
CAMP  
POLO, IL



**SAVE THE DATES**  
**COME JOIN THE FUN IN 2022**  
**ATTEND ONE, TWO OR THREE DAYS!**

**4-H Camp Counselor Applications** are being taken

NOW-January 28th at 4:00pm.

Any teens ages 15 (by June 14th, 2022) on up may apply.

Please contact Brenda at 815-235-4125 for an application ASAP!





**Illinois Extension**

UNIVERSITY OF ILLINOIS URBANA-CHAMPAIGN

# *I Made That!*

## *Show Your Some Love!*

*University of Illinois Extension and 4-H have put together fun, interactive educational kits designed to inspire the inner chef and to celebrate American Heart Month this February!*

**Each kit is \$5 and includes:**

- February "I Made That!" booklet
- Fun activities to keep your heart healthy
- Heart-healthy recipes
- Select ingredients for your recipes
- Chocolate exploration and taste-test!



**Kits will be available for pick-up beginning February 7 at one of our Extension offices in Elizabeth, Freeport or Rockford, IL.**

**Register for your kit at:**

**[go.illinois.edu/jswIMadeThat](http://go.illinois.edu/jswIMadeThat)**

Jo Daviess County 4-H   Stephenson County 4-H   Winnebago County 4-H  
University of Illinois Extension College of Agriculture Consumer & Environmental Sciences



University of Illinois Extension provides equal opportunities in programs and employment. If you need a reasonable accommodation to participate, contact our office at (815) 235-4125.

# SCHOLARSHIPS

Pearl City Elevator offers 2 scholarships—

1) Agriculture First Scholarship and

2) Jim Vondra Memorial Scholarship. Go to:

<http://pce-coops.com/resources/scholarships/>

to apply.

Deadline is January 19th.





# ILLINOIS STATE HORSE 4-H NEWS



*Save the Date*

**4-H State Horse Judging  
February 19th, 2022  
Blackhawk East - Galva**



**Illinois Extension**  
UNIVERSITY OF ILLINOIS URBANA-CHAMPAIGN



*Save the Date*

**State Horse Bowl, Hippology & Horse Speaking Contests  
April 23 & 24, 2022  
UIUC Campus**



**Illinois Extension**  
UNIVERSITY OF ILLINOIS URBANA-CHAMPAIGN



# ILLINOIS STATE 4-H NEWS

- **YOUTH MEAT JUDGING SERIES**– the 1st meet is January 22nd at Eickman's in Seward, IL . Registration is onsite and starts at 8:30a.m. Instructions start at 9:15a.m.
- Junior Division: 8<sup>th</sup> Grade and Younger. Senior Division: High School
- Awards for top Individuals & Teams in both divisions sponsored by Illinois Farm Bureau
- More Information:

<https://pontiacffa.com/meats-judging-series/>

**COMING  
2022**

## YOUTH MEAT JUDGING SERIES

Illinois Association of Meat Processors and University of Illinois Meats Judging are collaborating to launch a youth meat judging series in spring 2022. Open to 4-H & FFA Youth. Following the outline of Illinois FFA Contest. Each contest is an invitational and will include a clinic. More information to come.

- January 22 - Eickman's Processing, Seward, IL
- February 5 - Coach workshop @ U of I
- February 12 - Raber Packing Company, West Peoria, IL
- February 19 - Wenneman Meat Company, St. Libory, IL
- March 5 - State Contest at University of Illinois (not affiliated with the series)

Questions contact: Jesse Faber [jfaber@pontiac90.org](mailto:jfaber@pontiac90.org)



# ILLINOIS STATE 4-H NEWS

**Do you have a 4-H Story you would like to tell? –**

## **Join the *Speaking for Illinois 4-H* Team**

We're looking for 4-H members interested in spreading the great news about 4-H. 4-H members 14 years of age or older can join the *Speaking for Illinois 4-H* team. There will be a virtual training offered on **Saturday, January 16 from 9-11 a.m.**

This virtual training, provided by the Illinois State 4-H Youth Leadership Team, gives you the chance to explore your own 4-H history and why you are involved, put that story into words, and learn the best ways to approach donors, civic groups, elected officials, and others to talk about 4-H. Learn why 4-H believes in Positive Youth Development and how we emphasize the essential elements of Belonging, Independence, Generosity and Mastery. All of this – and more – is a part of *Speaking for Illinois 4-H*! Once you're trained, you'll receive an invitation to be a part of our Legislative Connection events.

Members of this team will meet a minimum of four times throughout the year virtually as a team to remain on the team.

Registration is open NOW @: <https://4h.extension.illinois.edu/events/speaking-illinois-4-h-training>. Registration will close January 13.



Save the date!  
**STATE  
PUBLIC  
SPEAKING  
CONTEST**  
April 30, 2022



# INTERNATIONAL 4-H

Host an international youth this summer.....

International students come to IL each summer and stay with a host family for about 4 weeks. Host a Japanese or South Korean youth this summer through States' 4-H International! Expand your family's cultural understanding, learn about new foods and customs, and possibly learn a new language, all while sharing your own. Your children will build life-long friendships and will gain new perspectives on their own country, too! Families are needed for July 23 through August 18 (tentative dates). Applications are accepted until all placements are made. There is no cost for this program.

Students are matched with a host sibling by age gender and interests. So families hosting, must have a child the between 12-18

*Host family selection is dependent on completion of an application and screening process, as well as student availability and personality compatibility.*

For more information or to apply, visit: <http://www.states4hexchange.org>.





# EXTENSION NEWS

## **Master Gardener program offers hybrid training**

The University of Illinois Extension is pleased to announce that Master Gardener Training will be held in Stephenson County starting in February. Interested people can apply now for the training. Applications can be obtained by calling the office at (815) 235-4125 or on the web at [go.illinois.edu/jsw](http://go.illinois.edu/jsw).

The training includes videos, a Master Gardener manual, reading materials, and quizzes. Participants will complete videos and reading assignments on their own and then meet in-person on Tuesday mornings at the University of Illinois Extension-Stephenson County for discussion, review, and follow-up. Training consists of 11 sessions conducted on Tuesdays, starting on February 15, and concluding April 26, from 9 a.m. to Noon

## **Time to prune the fruit trees.....**

University of Illinois Extension will be offering it's popular "Intro to Fruit Tree Pruning" class on three different dates, two of the programs will be in person and one will be offered as a Zoom webinar. The in-person programs are Tuesday, February 1 from 1 to 3 p.m. at the Elizabeth Community Building, HWY 20 W. Elizabeth, IL, and Tuesday, February 8 from 10 a.m.to Noon at the Freeport Public Library, 100 E. Douglas Street, Freeport, IL. The Zoom webinar will be offered on Friday, February 11 from 3 to 5 p.m. Cost for the class is \$5. For more information and to register, please visit [go.illinois.edu/jsw](http://go.illinois.edu/jsw) or call 815-235-4125.

