

# I ILLINOIS

## Extension



### 4-H Newsletter

December 2019/ January 2020

#### I ILLINOIS

Extension



#### University of Illinois Extension Staff in

##### **RICHLAND COUNTY**

306 S Fair St  
Olney, IL 62450  
Phone: 618.395.2191

##### **Office Hours:**

Monday-Friday  
8:00 a.m. to 4:30 p.m.  
Closed 12 to 1:00 p.m.

##### **Stacy Woodyard**

Interim - County Extension Director

*Extension Educator, 4-H Youth  
Development*

##### **Jessica Ochs**

*Extension Program Coordinator, 4-H*

##### **Sheri Pitts**

*Office Support Assistant*

### Calendar of events

*(Dates are tentative and subject to change)*

#### December

- 4 Jr Federation Meeting @ 3:30 pm
- 8 Federation Meeting @ 1:00
- 10 Re - Enrollment Deadline!
- 12 County Board Meal - Ridge Runners
- 20 PJ Christmas Movie Night - Extension Office @ 6:00 pm
- 21 Shooting Sports - Veterans Hall @ 1:00 pm
- 24 - Jan 1 Office Closed - Happy Holidays!

#### January

- 9 County Board Meal—Southern Smilers
- 11 Shooting Sports - Veterans Hall @ 1:00 pm
- 18 New Member Workshop - Extension Office @ 1:00 pm
- 20 Martin Luther King - Office Closed!
- 25 Beef Weigh - Fairgrounds @ 8:00 am

#### February

- 8 Shooting Sports - Veterans Hall @ 1:00 pm
- 13 County Board Meal - Hilltoppers

---

### **Enrollment Date Deadlines**

- **December 10th - Re-enrollment Deadline**
  - **January 1st - Livestock Deadline**
- **March 1st - To be able to show at fair**



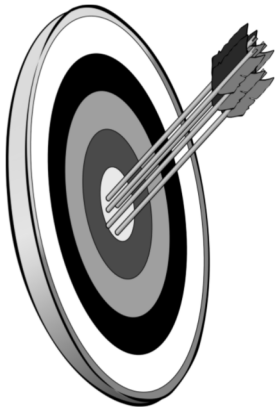
**Richland County  
Illinois 4-H**

COLLEGE OF AGRICULTURAL, CONSUMER  
& ENVIRONMENTAL SCIENCES

# Richland County 4-H



## Shooting Sports Schedule



November 16

December 21

January 11

February 8

Veterans Hall @ 1:00 pm

## ENROLL NOW!

Registration is now open for the 2019-2020 4-H year at <https://il.4honline.com>. Use your email address and password you used to enroll last year. If you can't remember your password, just click the forgot password and a new one will be assigned to you. If you can't remember what email you used please contact the Extension office and we can look it up for you. There are a few reminders to re-enrolling this year please see the list below:

1. Your projects you had last year are still listed. If you want to continue to take that project leave them there. If not, please delete them. Some projects are no longer being offered, and there are new projects (please check in this newsletter for those listings).
2. After you have selected your project, please make sure to check the drop down box for a manual (only if you need it for your project).
3. There is not a \$20 program fee, again, this year. Please continue through the invoicing process and check the box that says 4-H Check.
4. You will have received a Risk Form from your leader. We need these forms filled out and sent back as soon as you get them. (**FOR NEW MEMBERS ONLY**)
5. Deadline for Re-enrollment is **DECEMBER 10, 2019**.

We are looking for a family or a couple of families that would be interested in helping with a research project for the University of Illinois! It would include watching for owls for a couple of weeks and building a couple of different kinds of nesting boxes!



## 4-H Federation

The Richland County 4-H Federation is for all Richland County 4-H members of 8th grade age and older. The next meeting will be **Sunday, Decem-**

December Meeting

- T-Shirt Designs
- 4-H Week Discussion

**ber 8 at 1:00 p.m. at the Richland County Extension Office.** All 8th grade age and older members are welcome. Join us to make plans for the upcoming year!

**New Member Works**

# YQCA LIVESTOCK YOUTH

BEEF, SWINE, GOAT, SHEEP, AND DAIRY ONLY!!

**In Person**



**Online**

- **Cost - \$3/ pay online**
- **Must register online**
- **Take every year**
- **Nationally Recognized**
- **Must do to show at fair!!!**

- **Cost - \$12/ pay online**
- **Must register online**
- **Take every year/ can test out**
- **Nationally Recognized**
- **Must do to show at fair!!!**

- Website <http://yqca.org/>
- MUST sign-in with 4-H Online log in information
- If you are wanting to do in person please..Please call the office to add your name to the list so we have an idea of a number of how many want in person training.

**ILLINOIS**  
Extension



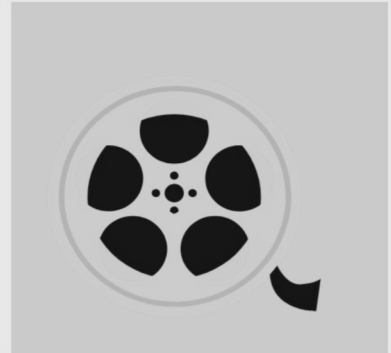
COLLEGE OF AGRICULTURAL, CONSUMER  
& ENVIRONMENTAL SCIENCES



JR FEDERATION INVITES YOU



# PJ & MOVIE PARTY



Watch a Christmas Movie & Enjoy time with your  
Friends!

**DEC. 20 • 6PM • EXTENSION OFFICE**  
**306 S FAIR ST**

**RSVP EXTENSION OFFICE 618-395-2191**

University of Illinois Extension provides equal opportunities in programs and employment.  
If you need a reasonable accommodation to participate in this program, please contact 618-842-3702.  
Early requests are strongly encouraged to allow sufficient time for meeting your access needs.

# Illinois 4-H

**I ILLINOIS**  
Extension



**REGISTER NOW**  
[go.illinois.edu/4HJL](http://go.illinois.edu/4HJL)



**BE THE LEADER  
YOUR CLUB NEEDS!**

## BOOK YOUR TRIP TODAY

Only 100 spots available  
*Registration closes January 24  
(or at capacity)*

**COST: \$170**

**SCHOLARSHIPS AVAILABLE ONLINE**

## February 22-23

ARRIVE 10 - 11 AM Saturday, Feb. 22  
DEPART by 11:30 AM Sunday, Feb. 23

**Keller Convention Center**

1202 Keller Drive | Effingham

**7th & 8th grade 4-H members**

**COLLEGE OF AGRICULTURAL, CONSUMER & ENVIRONMENTAL SCIENCES**

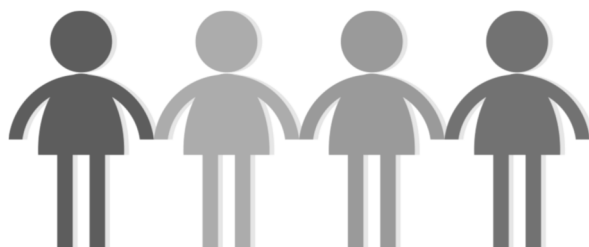
University of Illinois | U.S. Department of Agriculture | Local Extension Councils Cooperating

University of Illinois Extension provides equal opportunities in programs and employment.

If you need a reasonable accommodation to attend, call the registration office.

### Get cash to help improve your community

Looking for funding support to conduct community service outreach in your community? Farm Credit Illinois is ready to help Illinois 4-H clubs and FFA chapters bring positive and visible change to Illinois communities! Fifty \$500 Community Improvement Grants are available. Clubs must be located in one of the 60 central and southern Illinois counties served by Farm Credit Illinois. Check if your club is eligible and apply after November 1 at [farmcreditIL.com](http://farmcreditIL.com). **Be sure to contact your LOCAL EXTENSION OFFICE BEFORE applying for this grant to ensure you follow all fiscal requirements!**



### Take the next step in your leadership journey

February 22 & 23 | Effingham, IL

You'll laugh.  
You'll make  
new friends.  
You'll even  
learn cool



ideas to take back to your own 4-H Club at this year's Illinois 4-H Junior Leadership Conference. The conference is open to 4-H members in 7<sup>th</sup> and 8<sup>th</sup> grade. Registration will open in November at [go.illinois.edu/4Hjlc](http://go.illinois.edu/4Hjlc). This year's conference will be held at the Holiday Inn in Effingham!

### Join inspiring Illinois 4-H teen in service to others

Illinois 4-H member and 2020 Miss Central Illinois Outstanding Teen Elizabeth Weidner of Effingham County is inviting members and clubs to help with an amazing service project. Elizabeth wants to provide needed personal items to families whose children are being treated at Children's Miracle Network hospitals and Ronald McDonald houses. She is asking your help collecting:

- Shampoo and conditioner
- Shower gel/soap/moisturizer
- Deodorant
- Razors and shaving cream
- Toothbrush/toothpaste/mouthwash
- Combs/brushes
- Baby wash



These items will be stocked in nurse stations and available to families who need items. In addition, Elizabeth is collecting:

- Pre-packaged snacks, cereals, oatmeal, chocolates, and hard counties
- Small packets of teas, coffee, creamer, sugar, sweetener
- Packages of hot chocolate, teas, juice boxes

Learn more @ <https://www.facebook.com/crownsfightcancer>. Elizabeth is a stage IV high risk neuroblastoma cancer warrior survivor and patient of Children's Miracle Network hospitals. For more information, one may call 217-925-5700. Elizabeth wants to deliver her items in late fall, so plan your campaigns soon!

# Illinois 4-H

## Take a trip across the globe

Visit exciting new places as part of the 2020 States' 4-H International Exchange program. Check out this line-up:

**Costa Rica:**

June 18 – July 17. Cost \$1,775 (plus airfare \$800 to \$1,300). Ages: 15 – 18.

**Japan:**

July 8 – August 6. Cost \$2,725 (plus airfare \$1,700 to \$2,600). Ages: 12 – 18.

**Japan:**

June 18 – August 6. Cost \$3,875 (plus airfare \$1,700 to \$2,600). Ages: 12 – 18.

**Norway:**

June 24 – July 24. Cost \$2,200 (plus airfare \$1,300 to \$2,000). Ages 15 – 18.

**South Korea:**

July 15 – August 13. Cost \$2,430 (plus airfare \$1,300 to \$2,300). Ages 12 – 18.

**Taiwan:**

June 28 – July 28. Cost \$2,200 (plus airfare \$1,300 to \$2,300). Ages 12 – 18.

**Romania:**

June 24 – July 24. Cost \$1,775 (plus airfare \$1,300 to \$2,000). Ages 15 – 18.



The first deposit and application are due December 1. Second deposit is due February 1. For more information, check out their website @ [states4hexchange.org/](http://states4hexchange.org/).

---

## Here's help to pay for college

### FARM CREDIT ILLINOIS SCHOLARSHIPS

High school seniors planning careers in agriculture may apply for a \$2,000 scholarship. Farm Credit Illinois will provide 30 scholarships to youth who live or farm in one of the 60 counties in their service area. The first \$1,000 will be distributed for the Fall 2019 semester, and the second \$1,000 will be applied during the Fall 2021 semester. Apply online at [farmcreditIL.com](http://farmcreditIL.com) before March 1. Are going to University of Illinois College of Agricultural, Consumer, and Environmental Sciences? The college is MATCHING this scholarship, dollar for dollar! Double your money while getting a great ag education!

### TEACH OUTDOOR SCHOLARSHIP

A \$500 Scholarship will be awarded to a student who will be a freshman or sophomore in college or trade school during the 2020-2021 school year. Applicants must be a current high school or home school student. Applications are due January 1 and can be downloaded @ <http://www.teachoutdoors.org/scholarship.html>.

### JOYCE BETZ MEMORIAL SCHOLARSHIP

A \$1,000 Scholarship will be awarded to a 4-H member who will be a freshman or sophomore in college or trade school during the 2020-2021 school year. Applicants must be a current high school or home school student. Applications are due January 1 and can be downloaded @ <http://www.teachoutdoors.org/scholarship.html>. Joyce was a 4-H club leader in Will County.

# FAMILY LEGACY FUTURE



More than **\$875,000**  
in scholarships are awarded annually  
through the Illinois Farm Bureau  
and County Farm Bureaus.  
Visit [www.iaafoundation.org](http://www.iaafoundation.org)

Application Period: **December 1, 2019 - February 1, 2020**

University of Illinois • U.S. Department of Agriculture • Local Extension Councils Cooperating  
University of Illinois Extension provides equal opportunities in program and employment.  
If you need a reasonable accommodation to participate in a program,  
please contact your local Extension office.