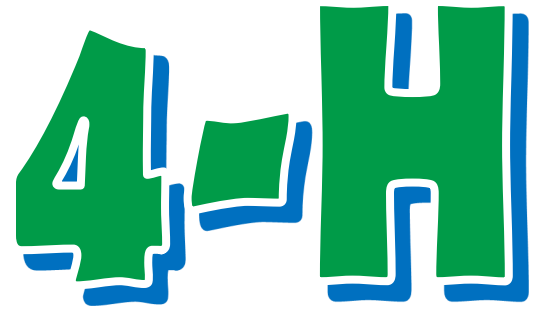




# Shelby County



# March News



**Federation Members attend Leadership Training**



**Stew-Stras Cloverbuds Holds "Valenswine" Themed Meeting**



**Coldspring Copperheads 4-H Club met in February and made Valentine's Day Cards for the Herrick Meals on Wheels Program.**

# Calendar of events

### March

- 4.... Robotics SPIN Club, 6-8 p.m. Extension office
- 7.... Enrollment & project changes deadline in order to exhibit at the Shelby County 4-H & Jr. Fair
- 11.... Federation meeting, 7 p.m. Extension office
- 18.... Robotics SPIN Club, 6-8 p.m. Extension office
- 16-23.... Shelby County 4-H Week
- 25.... Rabbit Workshop, 6:30, 4-H Center
- 30.... Spring Clean up at the Fairgrounds

### April

- 1.... Robotics SPIN Club, 6-8 p.m. Extension office
- 2.... Tailwaggers, 6:30 registration, practice at 7 p.m. Fairgrounds
- 6.... Jewelry Workshop, 9-10:30 a.m. Extension office
- 6.... Livestock & Showman Clinic, 8:45 a.m. Edgar County Fairgrounds, Paris
- 15.... Robotics SPIN Club, 6-8 p.m. Extension office
- 15.... County Public Speaking Contest 7 p.m., 4-H Center
- 27.... National True Leaders in Service Day
- 29.... Robotics SPIN Club, 6-8 p.m. Extension office

### May

- 1.... Horse/Pony/Donkey/Mule ownership & lease papers due into the Extension office
- 11.... State Robotics Competition, Bloomington

### June

- 1.... Deadline for Quality Assurance & Ethics
- 3.... 4-H & Jr. Fair Entries are due, Extension office
- 8.... 4-H State Public Speaking Contest, Decatur
- 22.... 4-H BBQ (tentative)
- 17.... 4-H State Livestock Judging, Champaign
- 23-29.... Illini Summer Academies, Champaign

### July

- 13.... Fair Clean-up at 8 a.m.
- 17.... Misc. General Projects judging, 9 a.m. 4-H Center
- 21-24.... Shelby County 4-H & Jr. Fair
- 22-28.... State Junior Horse Show

### Aug

- 8-18.... IL. State Fair
- 11.... General Projects judging for Shelby County at

## Federation Spotlight

The March Federation Spotlight member of the month is Jerimiah Depew. Jerimiah is a six year member of the Shelby Showstoppers 4-H Club. This is Jerimiah's first year in Federation.



Jerimiah joined Federation because he had heard through friends and family that Federation is fun and he would learn lots of new things.

Jerimiah's favorite things are helping 4-H'ers at county events and learning new things.

## Enrollment deadline

Thursday, March 7

In order to exhibit at the Shelby County 4-H fair, Shelby County 4-H members must be enrolled in 4H Online by March 7. March 7 is also the deadline to add or delete projects. The \$10 program fee is also due by this date.

## Shelby County Jr. Fair Board meeting

Monday, February 25 at 7 p.m.

The Shelby County Jr. Fair Board will hold it's next meeting on February 25 at 7 p.m. at the 4-H Center.

## Spring Clean-up

Saturday, March 30 at 8 a.m..

Spring Clean-up at the fairgrounds is scheduled for March 30 at 8 a.m. Bring drills, rakes, shovels, leaf blowers, ladders, etc. We will be raking leaves from the barns, picking up sticks and making minor repairs as needed. This will count as a county activity.

## Shelby County 4-H Week—March 16-23, 2019

“4-H’ers on the Move in Shelby County 4-H” is the theme for the 2019 4-H Week.

### 4-H Fire-Up

Saturday, March 16

Want to learn more about 4-H projects and have fun at the same time? 4-H Fire-Up is the answer! Federation members are planning 4-H Fire-Up on March 16 from 9 to 11 a.m. at the 4-H Center. Everyone is welcome to come learn. This is a great workshop for Cloverbuds, first and second year members to experience projects they may not know about. Parents are welcome. Please **RSVP by March 8** so we can purchase supplies for those who sign up.



### Attend a church of your choice

Sunday, March 17

Some of our 4-H’ers traditionally attend church as a group during 4-H Week and say a few words about 4-H during the service.

### International Night

Tuesday, March 19

New location for 2019! International Night will be held at the Shelbyville Nazarene Church gym located at the corner of North 3rd and Will Streets. There will be a sign on Rt. 128 with an arrow directing families. Serving will begin at 6 p.m. Federation will provide drinks and table service.

Bring your change and dollar bills to vote for the "Best Country's Cuisine" at International Night. 1 penny = 1 vote, \$1 = 100 votes. The winning club will receive 25% of the total amount collected and Federation will receive 75% to be used to sponsor future workshops.



### Skating Party

Sunday, March 17

The All-Family Skating party will be at Silver Stars Skating Center in Mattoon from 5 to 7:30 p.m. There will be a \$1 charge for those needing skates; otherwise the event is free. Friends and family are welcome to attend. There is also concessions available for purchase.



### Food Collection

Tuesday, March 19

Bring your food donations for Munchies Ministry (formerly Blessings in a Back Pack) to help youth in the Cowden Herrick school district. Help your club earn money! Federation will give each club \$20 for bringing at least 25 to 49 items and will give \$30 for 50 or more non-perishable items for the Cowden Herrick Back Pack program. If another time would be convenient to bring the food items, please contact Yolanda at the Extension office.

Donations needed include: individual portions of soup, macaroni & cheese, fruit cups, cereal, granola bars, peanut butter crackers, etc. All items need to be non-perishable.



### Window Display

Monday, March 18

Window displays must be in place by 9 a.m. on Monday, March 18. Each club display must include the club name, members’ and leaders’ names, focus on the 4-H theme, and information about joining 4-H is also beneficial. Winners will be announced at International Night. Call the Extension office with the location of your display.



### Shelby County 4-H Week—March 16-23, 2019

“4-H’ers on the Move in Shelby County 4-H” is the theme for the 2019 4-H Week.

#### Promote 4-H

Wednesday, March 20

Wear your Shelby County 4-H T-shirt to school to promote 4-H. Email or send a Facebook message to Shelby County IL 4-H of you wearing your 4-H shirt by 2 p.m. on March 20 and your name will be entered into a drawing for a free prize. Pictures will be posted on the Facebook page.

#### Community Service

Thursday, March 21

Clubs are encouraged to do a community service project to give back to others and promote 4-H. For those clubs who do a community service project during the month of March, Federation will pay the club \$25. Send pictures to Yolanda at [nation2@illinois.edu](mailto:nation2@illinois.edu) so your community service project can be shared with others.

#### Rabbit Workshop

Monday, March 25

A rabbit workshop will be held on Monday, March 25 at 6:30 p.m. at the 4-H Center for those interested in learning more about caring, raising and exhibiting rabbits.

4-H members are encouraged to bring a rabbit with them. There is no cost to attend. Judge Butch Hall will be leading the workshop.

RSVP by March 22. by calling the Extension office or emailing Yolanda.

#### Family Fun Night

Friday, March 22



Family Fun night will be held at the Shelbyville Nazarene Church gym and will be from 6:30-8 p.m. There will be a bounce house, face painting, bingo, games, prizes and snacks. Come join us for an evening of FUN!

#### Spring Craft Day

Saturday, March 23

The workshop will start at 9 a.m. and end at 11 a.m. There is a \$5 fee for 4-H members and \$8 for non 4-H members to help cover the cost of supplies. 4-H’ers might even be able to exhibit some of their crafts in the Jr. Fair. **RSVP and fee is due by March 15.** Space is limited so register soon!

We only purchase enough supplies for those who have pre-registered. Craft Day pre-registration is due March 15. Call 217-774-9546 to register.

Help is needed! Older 4-H members and adult volunteers, we need your help. RSVP if you are available to help.



#### Jewelry Workshop

Saturday, April 6

A jewelry workshop will be held on Saturday, April 6 from 9-10:15 a.m. at the Extension office. A second workshop will be held from 10:30-12. 4-H’ers will learn how to make a stretchable bracelet and wire necklace.



Projects can be exhibited in the 4-H Fair as Visual Arts - Glass & Plastic and in the Jr. Fair in jewelry making.

There is a \$5 fee to help cover the cost of materials. Starla Stillwell be leading the workshop. 4-H members must RSVP and pre-pay by March 29. This workshop is limited to 6 members so don’t delay in signing up!

## 4-H Visual Arts Project Changes for 2019

4-H members must be enrolled in the various types of Visual Arts projects and not just Visual Arts like in past years.

The types of Visual Arts projects available are:

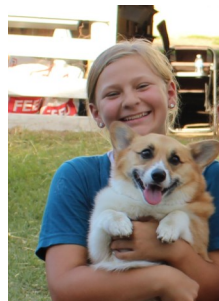
- Chalk, carbon, pigment
- Clay
- Computer generated art
- Fiber
- Glass & Plastic
- Heritage Arts
- Metal
- Nature
- Paper
- 3-Dimensional
- Wood

*Verify your projects with your club leader as they should have an enrollment listing or go into 4H Online and confirm what you have enrolled in. If you aren't sure which projects you are interested in, you should sign-up because after March 7 you will not be allowed to add projects.*

## 4-H Dog Obedience Classes Starting April 2, 2019

Registration for Dog Obedience Classes will start at 6:30 p.m. on April 2. 4-H Dog Obedience Classes will start on Tuesday, April 2 from 7 to 7:30 p.m. at the Shelby County Fairground Show Arena. Dogs should be at least 6 months old. You must bring proof of your dog's RABIES and DISTEMPER-PARVO vaccinations with you to registration. Bring a parent for the registration and your dog. There is a \$9 fee for the training collar and lead to be used only for dog obedience.

New members are welcome to enroll. Youth who are 8 years of age and have not reached their 19th birthday on or before September 1, 2018 are eligible to enroll. Members are required to pay the \$10 program fee but the fee is only paid by members once. Tailwagger only members need to pay the \$10 fee on April 2. This is an 8 week series with a graduation at the end of the series. After the 8 weeks, practice will continue until the fair. For more information contact Sandy Brix or Beth Weber at 774-5464. Classes are sponsored by Shelby County Tailwaggers 4-H Club.



## Advertising/Marketing Opportunity

The Shelby County Jr. Fair Board is looking for older 4-H members and adult volunteers to help with advertising and marketing for the fair board. A workshop will be held for those who are interested in taking action photo's, creating advertising flyers, working with social media, etc. If you would be interested in volunteering to help with this opportunity, contact the Extension office to sign-up. The Fair Board wants to promote the fair to share all the hard work that Shelby County youth have invested in their projects as well as advertising activities throughout the year.

## Shelby County 4-H County and Parent T-shirts

T-shirts will be available for purchase at 4-H Fire-Up, International Night and Spring Craft Day. \$12 for youth thru Adult XL and \$14 for 2XL.

Sizes are limited so don't miss out! 4-H'ers can show off their county 4-H shirt on Wednesday, March 20 to promote 4-H Week!





# County Public Speaking Contest

Monday, April 15 at 7 p.m. 4-H Center



Shelby County 4-H members enrolled in Public Speaking will receive their public speaking entry form in mid March. Entry forms will be due into the Extension office by April 1. Exhibitors are limited to one entry. If you have questions, contact Yolanda at the Extension office at 774-9546.

### **Formal Speech | Self-written | Notes Allowed | No props | Individual | 4-8 minutes**

Formal Speeches share the presenter's own unique view and are intended to motivate, persuade, or inform an audience and may include a call to action. Youth deliver a speech on any topic they wish (Original Oratory), or choose one of these four topics on which to speak (Topical Response):

- Welcome to the Digital Age
- What is My Connection to the Global Community?
- Power: Who Has It, Who Doesn't, and Does It Matter?
- If I Could See tomorrow...

### **Illustrated Speech | Self-written | Notes allowed | Illustrations Required | Individual | 4-8 minutes**

Illustrated Speeches may be used to inform, persuade, or motivate the audience while using a visual aid. Visual aids may be two dimensional, three-dimensional, or digital. Youth may include audience participation. Digital visual aids must be stored on a USB flash drive. Illustrated speeches may be:

- How-to demonstrations which show the audience how to do something.
- Object lessons which use objects as metaphors to share a message.
- Educational models where drawings or diagrams help explain a topic.

### **Original Works | Self-written | Notecards allowed | Props and Costumes Allowed | Individual or 2-Person Team | Manuscripts sent in Advance | 4-8 minutes**

Original works must be written entirely by the presenter. It may be presented as an individual or a two-person team entry. Manuscripts must be sent in advance to the contest. Presentations may be designed for TV, radio, or online media and must be presented live. The types of entries could include:

- Prose and Short Stories
- Poetry
- Broadcast Media Program
- Theatrical
- Combined Program: Combine any number of the above elements along with other creative presentation forms

### **Oral Interpretation | Published work | Props and Costumes Allowed | Individual or 2-Person Team | Manuscripts sent in Advance | 4-8 minutes**

Presentations in Oral Interpretation must be published works, and manuscripts or transcripts must be submitted prior to the event. They may be presented as an individual or a two-person team entry. The types of entries could include:

- Prose and Short Stories
- Poetry
- Theatrical Interpretation
- Published Speech Recitation: Excerpt from a spoken presentation delivered by a public figure, such as Winston Churchill, Dr. Martin Luther King, Jr., or Maya Angelou
- Combined Program: Combine any number of the above elements along with other creative presentation forms

## **Shelby County Farm Bureau Scholarships**

### **Now Available!**

As of January 11, 2019 scholarships were made available to all high school seniors and current college students studying or preparing to study agriculture or a science-related topic. Scholarships can be found from a guidance counselor, an ag teacher, or an FFA advisor. Scholarships are also available on Shelby County Farm Bureau's Facebook Page in the group titled "SCFB Scholarships" and on our website at [www.shelbycofb.com](http://www.shelbycofb.com). All scholarships will be due to the Farm Bureau office by March 15, 2019, by 4 PM, no exceptions. Call our office for any questions at 217-774-2151.

**2019 AVAILABLE SCHOLARSHIPS – see application for more details and eligibility**

- **Chris Barker Memorial Scholarship** *(Four \$1,000 scholarships awarded)*
- **Buffett Scholarship** *(Five \$2,000 scholarships awarded)*
- **John Culumber Memorial Scholarship** *(Four \$1,000 scholarships awarded)*
- **Shelby County Farm Bureau Scholarship** *(Ten \$1,000 scholarships awarded)*
- **Richard, Lefern, and Peggy Soldner Scholarship** *(Three \$3,500 scholarships awarded)*
- **Hunter Legacy Scholarship** *(One \$1,500 scholarship awarded)*

### **Online ethics certification required for everyone taking 4-H animal projects First year animal exhibitors - take note!**

All 4-H members enrolled in an animal project area are required to complete the online **Quality Assurance and Ethics course** one time in order to stay enrolled in an animal project area. The certification must be done if you are enrolled in one of the following projects: beef, dairy, cats, dogs, goats, horses, poultry, rabbits, sheep, and swine. Members who don't complete the certification before the show will be removed from the project and not be allowed to show. Anyone who has already taken the certification does not need to retake the test. The local office has a list of those already certified. Go to [go.illinois.edu/4Hqaec](http://go.illinois.edu/4Hqaec). **This rule applies to 4-H members who exhibit live animals AND poster exhibits. June 1 is the deadline!**

### **New/changes to the 2019 Shelby County 4-H & Jr. Fair**

**Donkey's and Mules will have exhibit opportunities during the Horse/Pony show.** There are classes specifically for donkey's/mules in halter, country pleasure, western pleasure and horsemanship.

**Dairy Show -** The Dairy Show will be held on Tuesday July 23 at 1:00 p.m. in the Show Arena.

### **Horse, Pony, Donkey, Mule Ownership and Lease Papers**

Due Wednesday, May 1, 2019

#### **NO EXCEPTIONS!!!**

Horse, pony, donkey, and mule lease and ownership papers are DUE in the Extension office by Wednesday, May 1, 2019. Two pictures (each side) of horse to be shown or as a back-up horse must accompany lease/ownership papers.

If you are planning to show at the State Fair as well as the Shelby County 4-H & Jr. Fair, TWO sets of pictures must be turned in. The correct lease and ownership papers are on the Shelby County web site or available at the Extension office.

### 4-H Membership Policies for Shelby County 4-H

Youth who are at least 8 years of age and have not reached their 19th birthday on or before September 1, 2018 may enroll in 4-H. Youth who are 5 through 7 years of age on or before September 1, 2018 may enroll in 4-H Cloverbud groups. Membership eligibility for home schooled youth should be determined by age and not school grade.

#### 4-H Program Fee

4-H members will be responsible for the \$10 program fee for 2018-2019. Once an enrollment form has been turned in to the office, the member is responsible to pay the program fee. Up to 5 project manuals will be provided to each member free-of-charge. Members who need more than the 5 “freebies” will be asked to pay for the additional books.

- ➔ 4-H member **MUST attend 3 of their own club meetings.** There is an exemption to college students who must attend 2 club meetings; and
- ➔ 4-H member MUST present a talk or demonstration at their own club meeting (NOT on a farm tour) **about a 4-H project** (member doesn't have to be enrolled in the project); and
- ➔ 4-H member MUST participate in a county activity.

A youth who enrolls in a 4-H club but fails to do ALL of the above will NOT be eligible to take part in county 4-H exhibitions, receive 4-H premiums or other awards and recognition. Leaders track this information.

#### Approved County Activities

Each 4-H member is required to participate in an approved county activity in order to exhibit at the County Fair.

The following is a list of approved county activities:

<b>Fall/Winter</b>	Scarecrow Daze Parade, Winter Craft Day
<b>March</b>	4-H Fire-Up, helping your club design and put up a Window Display, International Night (participating with your club, not just attending), Family Fun Night, Spring Craft Day, Rabbit Workshop
<b>April</b>	Jewelry Workshop
<b>June</b>	4-H Barbecue, 4-H Camp, Illini Summer Academies, County workshops

Any workshops sponsored by Shelby County 4-H are also included as a county activity.

Only 1 activity is required, but the hope is 4-H members will attend many of the activities and workshops so they can make their 4-H experience the best it can be.





## Shelby County 4-H Clubs Meetings

### *Coldspring Copperheads*

March 4, 6 p.m. Herrick Grade School

### *F.A.R*

March 16, 1 p.m. CF & H Insurance

### *Findlay Feeders*

March 10, 3 p.m. Findlay Community Building

### *Ful-O-Pep*

March 4, 6:30 Summers Residence

### *John Jordan Jaybirds*

March 5, 6:30, Shelby Electric Coop

### *Moweaqua Rustlers*

March 10, 2 p.m. Moweaqua First Baptist Church

### *Oconee Eager Beavers*

March 7, 6:30 p.m. Oconee School

### *Shelby County Cloverbuds*

March 9, 10 a.m. Shelby County Senior Center

### *Shelby Showstoppers*

March 11, 6 p.m. 4-H Center, Shelbyville

### *Shelby Sparklers*

March 2, 8:30 a.m. at Martha Hoene's residence.

### *Silver Spurs*

March 13, 7 p.m. Tower Hill Lions Building

### *Stew- Stras Cloverbuds*

March 15, 3:15-4:30, Stew-Stras School

### *Strasburg Tailtwisters*

March 10, 7 p.m. St. Paul's Lutheran Church, Strasburg

## 4-H Records Update for March

Mark your records if you attended or helped!

### *My Activities Record (Tan Sheet):*

#2—*International Night*

#3—*Window Display*

#6—*Skating, Spring Craft Day, Family Fun Night*

#8—*If your club did a community activity.*

### *IL Experience:*

#### *Participation in a county*

*activity:* Any of the activities that were recorded on the tan sheet for March may be listed in this area. Be sure to list in the correct boxes - if you participated in two to four activities, list the activities in that box.

## Two ways to give to 4-H

**Paper Clover Campaign returns in March:** It's never been easier to support 4-H. March 27 – April 7, you can donate to 4-H at your Shelbyville Tractor Supply stores as part of the Paper Clover campaign. Money donated at your store stays right in the county where it's given! Last fall, the campaign raised \$1 million!

**Federation incentive to 4-H Clubs and members . . .** Federation wants to encourage 4-H clubs and their members to set up a table/display of 4-H projects, pass out cookies, hold a petting zoo, etc. during the Paper Clover Campaign at the Shelbyville Tractor Supply. 4-H Clubs that provide at least two members and work for at least one hour will receive \$15 from Federation. This is a great way to promote Shelby County 4-H. If your club wants to participate during the Paper Clover Campaign, contact Yolanda to set up a date and time and what your club would like to do.

**Get your Clover at JOANN stores:** Between March 1 and April 30, you can donate to 4-H at your local JOANN store. Purchase either a \$1 or \$4 Clover for Kids at the register. \$4 clovers have a coupon for \$4 off your next visit to the store.

## Reading Project

Did you know that 4-H has a reading project? This is a county only project so there isn't premium money, but 4-H'ers will receive ribbons. There will also be a trophy awarded this year for the best reading project due to a generous donation.

The reading project can be found in 4H Online under county -career and leadership. Sign up by March 7!



## Shelby County 4-H — March 2019



### 2019 4-H DAY WITH THE CARDINALS

Saturday, May 11, 2019

**Ticket Orders Must be Postmarked by April 1, 2019!**



4-H members, alumni, families and their friends are invited to join us for 4-H Day with the St. Louis Cardinals, Saturday, May 11. The Cardinals will be playing the Pittsburgh Pirates in a 1:15 p.m. game in Busch Stadium. Prior to the game, 4-H members and their parents/leaders can take part in a parade around the ball field—that's right, participants will actually get to go down on the field and march one time around the stadium behind their state or county 4-H banner. Also, everyone who orders a ticket on this form will receive a specially designed t-shirt featuring the 4-H and Cardinals logos to commemorate the day. **Note: Groups of families or county groups that wish to sit together must send their orders in one package.** Tickets usually sell out, so order early. Tickets and t-shirts will be mailed on April 29.

#### **You could throw out the first pitch of the game, get an autographed baseball, or win other great prizes!**

4-H members who participate in the 4-H raffle will have a chance to be selected to throw out the first pitch, and other family members, alumni, and guests can win other great prizes. Each person who completes Section B of the order form will receive one chance to be selected for every \$1 they donate to the 4-H Day with the Cardinals Raffle Fund. The order form can be found at: <https://web.extension.illinois.edu/ccdms/shelby4h/5904.html>. For more information: (636) 528-7038, <http://www.4h.missouri.edu/4h-day-with/4h-day-with-cardinals>

### **Speaking for Illinois 4-H Training Opportunities**

Teens have an opportunity this spring to be trained as an Illinois 4-H spokesperson through the *Speaking for Illinois 4-H* program.

Speaking for Illinois 4-H training is open to 4-H members who are 14 and older. Both will be all-day training experiences to prepare teens to support our local 4-H program by soliciting donors, speaking to community groups, and updating county boards or other community governing bodies about local 4-H impact. On a state level, those attending a training can register for 4-H Legislative Connection events at the State Capitol where they will tell their story to Illinois legislators. The registration cost is \$12.

**LOGAN COUNTY:** Attend training on Saturday, April 27 at the Logan County Extension office, 980 N. Postville Dr., Lincoln. Register online @ [go.illinois.edu/sfi4h](http://go.illinois.edu/sfi4h) after March 28.

### **Host an international youth this summer**

Host a Japanese or Korean youth this summer through States' 4-H International! Expand your family's cultural understanding, learn about new foods and customs, and possibly learn a new language all while sharing your own. Your children will build lifelong friendships and will gain new perspectives on their own country, too!

Be aware:

- Families hosting a youth must have a child the same gender and approximate age (12-18) as the incoming youth.
- Youth must have a separate bed; a separate room is not required.
- Host family selection is dependent on completion of an application and screening process as well as student availability and personality compatibility.
- Applications are due April 1.

For more information, visit: <http://www.states4hexchange.org>, or contact Illinois representatives Miriam Rosenbohm @ [rosenbohm07@comcast.net](mailto:rosenbohm07@comcast.net) or Elisha Hughes @ [ehugh2@illinois.edu](mailto:ehugh2@illinois.edu)

## Livestock & Showman Clinic

Beef, Swine, Sheep  
Saturday, April 6, 2019

Learn how to be a master showman or a master of your species from experts in their field. The day will start at 8:45 a.m. with a delicious breakfast and conclude by noon. Cost is \$5 for 4-H'ers and \$10 for parents and non-4-H'ers. The event will be held at the Edgar County 4-H Fairgrounds in Paris, IL. Minimum of 25 participants must be registered to host event. Register by March 20 by calling 217-465-8585 or online at [go.illinois.edu/livestockmastershowmanclinic](http://go.illinois.edu/livestockmastershowmanclinic)

### Clinic Speakers:

- Emily Schilling - Beef Specialist from 3G Ranch & Nebraska College of Technical Agriculture
- Jared Whitcomb - Sheep Specialist from Whitcomb Club Lambs
- Kaylee Keppy - Swine Specialist and Feed Specialist from ShowTec
- Jennifer Livermore - Nutrition Specialist from Hueber Show Feeds

## Paid camp counselor positions open, male applicants encouraged to apply

Earn a starting salary of \$1,925 while you work outside and lakeside for seven weeks this summer! Counselors, minimum age 16, are needed at 4-H Memorial Camp near Monticello. You will live onsite at Memorial the following days: June 4-13, June 16-20, June 30 - July 4, July 7 - 12, and July 28 - Aug. 1. Meals are provided. Counselors receive a week of training prior to the start of camp. Training dates will be set later according to school schedules. Materials available online at <https://4h.extension.illinois.edu/programs/camping/4-h-memorial-camp>.

## Plant your own pollinator garden

You can receive free seed to help establish habitats for honey bees and other pollinators with the help of the GROWMARK System. Growing the number of pollinator gardens this year will help provide even more habitat for bees and other beneficial pollinator species. Here's how: Find a public place and get permission to plant a pollinator garden before you apply. Complete the online application by April 1 @ [www.bit.ly/2019GMKPollinator](http://www.bit.ly/2019GMKPollinator) If you have questions, contact Karen Jones, [kjones@growmark.com](mailto:kjones@growmark.com) or 309-557-6184. You'll receive enough seed to plant a 700-square foot area. GROWMARK will provide educational signage you are asked to post.

## Let's go fishing

With the lake fully stocked, 4-H Fish Camp is back at 4-H Memorial Camp near Monticello. Fishing begins at 10 a.m. Saturday, May 4 and lasts until 2 p.m. Sunday, May 5. Learn how to catch largemouth bass, crappie, bluegill, and channel catfish. Learn about fishing tips, lures, bait, equipment, knots, fish behavior, fish management, and fish cleaning. Each group registered will be assigned their own log cabin for lodging with single bunks. Participants must bring their own bedding and toiletries.

A fee of \$50 per person covers the complete program, lodging, boat, bait, and three buffet meals, including Saturday lunch and supper and a Sunday brunch. You'll also have fresh fish fillets to take home! Pre-registration and payment is required. To register, contact 4-H Memorial Camp at (217) 762-2741 or send an email to Curt Sinclair at [sinclair@illinois.edu](mailto:sinclair@illinois.edu).

## Get your poultry tested

The Illinois Department of Agriculture is again enforcing a clear pullorum test for all 4-H and county poultry in shows lasting longer than one day. The rule was suspended in 2018 due to a shortage of antigen. Be sure to allow adequate time and consult with your local veterinarian. This rule does not apply to waterfowl that normally swim, such as ducks and geese, per the county exhibition guidelines. 4-H and FFA shows lasting only one day are also exempt.

**I ILLINOIS**  
Extension



**Shelby County**  
1125 W. N. Second Street  
Shelbyville, IL 62565

Non-Profit  
Organization  
U.S. Postage  
Permit No. 210  
Shelbyville, IL 62565

Bulk Third Class

## Step up on National 4-H Day of Service

4-H members do service better than everyone else! Join us for National 4-H Day of Service Saturday, April 27. The goal of National 4-H Day of Service is to encourage 4-H members in every county to make a positive difference. Service projects can be done by individuals or as an entire county 4-H program. No matter what the project, this will be a day to make a difference.



Can't make it April 27? That's okay; plan something for any day in April.

Here's how to participate:

1. Go to <https://4-h.org/get-involved/true-leaders-in-service/> and register your event.
2. Go to [go.illinois.edu/4Hservice](http://go.illinois.edu/4Hservice) and find helpful resources.
3. Do your event and promote on social media using #thats4H and #TrueLeaders.
4. Go to [go.illinois.edu/4Hservice](http://go.illinois.edu/4Hservice) after your event and submit a report on what you did. We'd love to see your photos, too.

**I ILLINOIS**  
Extension



**Shelby County**  
1125 W North 2nd Street  
Shelbyville, IL 62565  
Phone: 217-774-9546 FAX: 217-774-9549

**Office Hours:**  
**Monday - Friday**  
8 a.m. to 4:30 p.m.  
*Closed from Noon to 1 p.m.*

Danna Lewis, County Director  
**Yolanda Nation**, 4-H Program Coordinator  
[nation2@illinois.edu](mailto:nation2@illinois.edu)

MaryBeth Massey, Program Coordinator, SNAP-Ed  
Penny Hood, Community Worker, SNAP-ED  
Diana Litteral, Office Support Assistant

**If you need a reasonable accommodation to participate, please contact the Shelby County Extension Office.**

The 4-H Name and Emblem are protected under federal statute Title 18, U.S. Code 707

University of Illinois ~ U.S. Department of Agriculture ~ Local Extension Councils Cooperating

University of Illinois Extension provides equal opportunities in programs and employment.