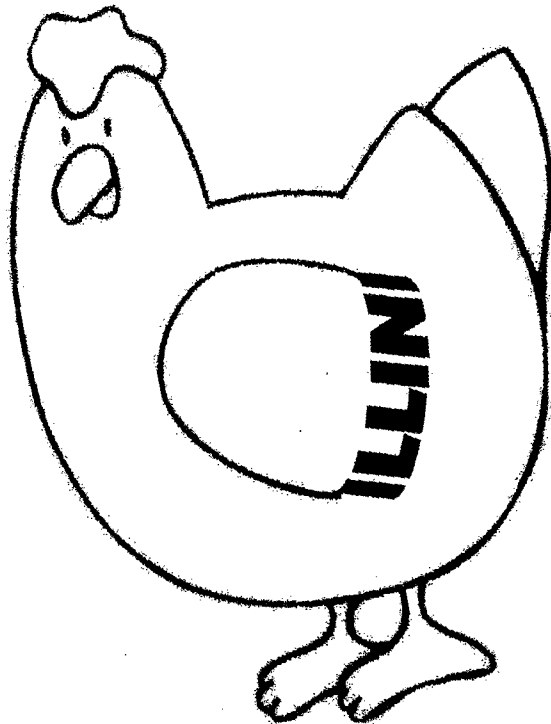
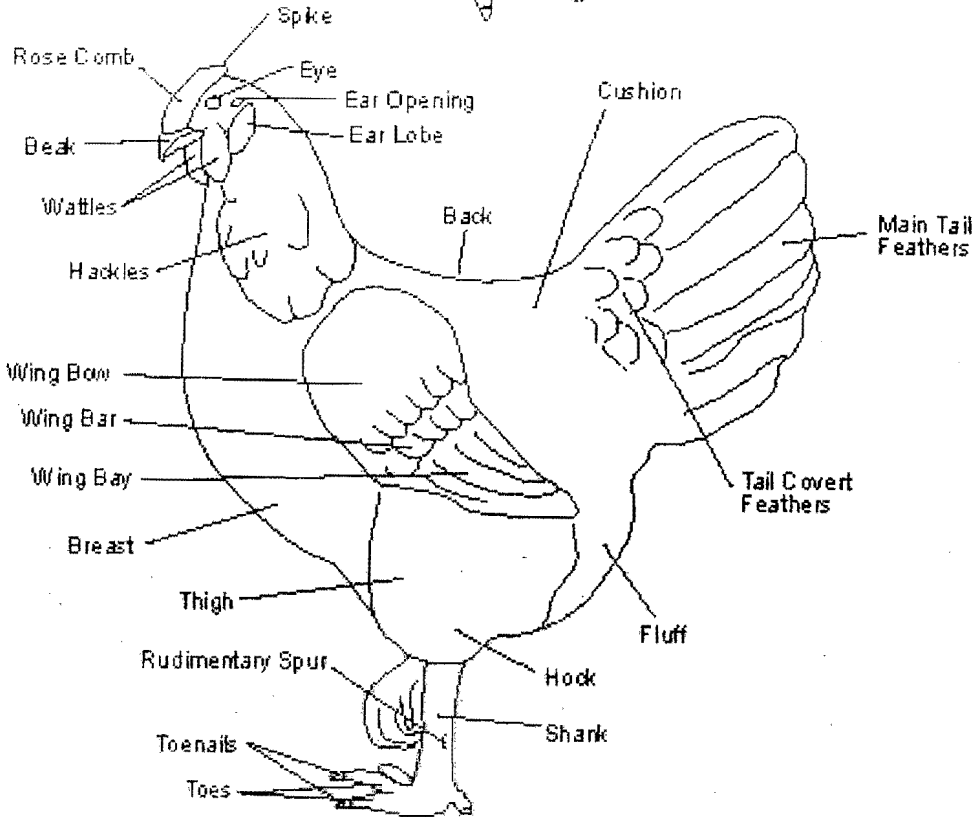
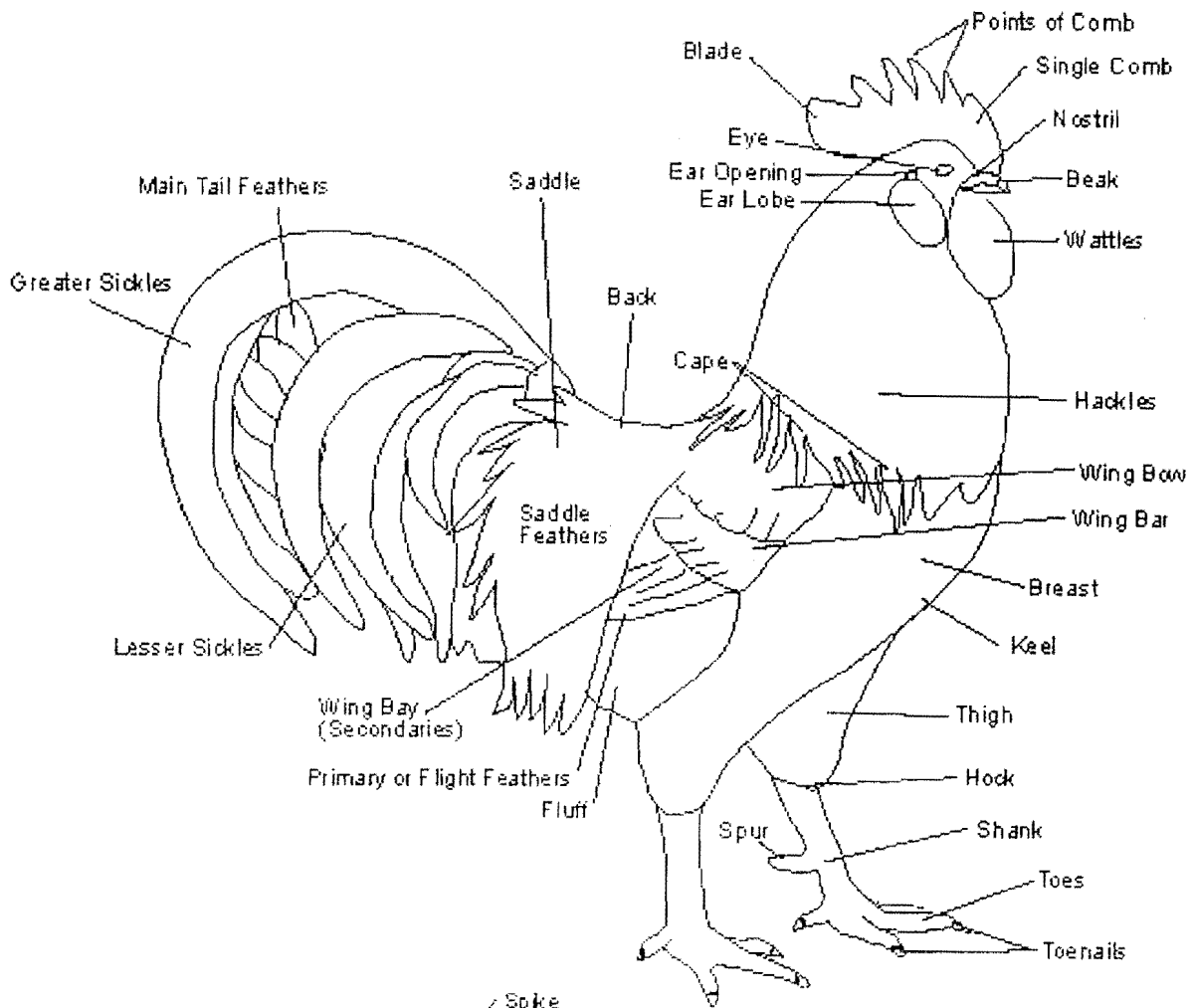




University of Illinois Poultry Program Fact & Fun Book







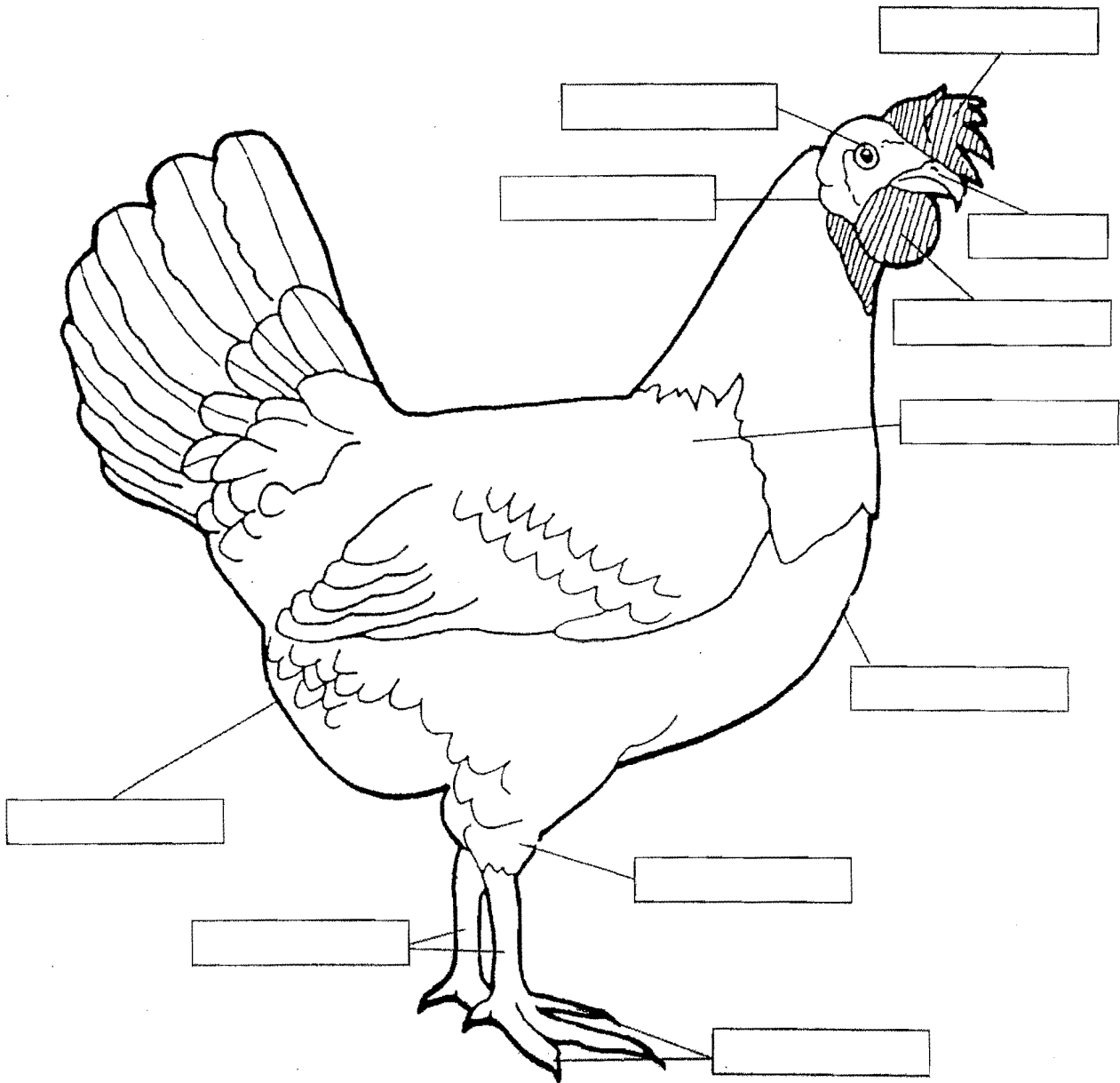
What Can Poultry Scientists Do?

They can tell you.....

- ★ why some poultry are not successful at reproducing
- ★ which housing and bedding are best for chickens, ducks, turkeys, or other poultry
- ★ how to manage poultry to prevent disease
- ★ how to select poultry by genetic potential
- ★ what to do with poultry waste products
- ★ why poultry are susceptible to disease
- ★ how poultry provide food and by-products
- ★ how to alter the genetics of poultry
- ★ how poultry utilize their food
- ★ why poultry eat or do not eat
- ★ how to care for the chick, duckling or poult
- ★ how poultry reproduce
- ★ or how to feed chickens, ducks, turkeys, or other poultry when they are growing, when they are laying eggs, or when they are mature.....
- ★ **And MUCH MUCH MORE!!!!**

Parts of a Chicken

Color and label the parts of a chicken.



Use each word only once:

beak
eye
toes

breast
hock
vent

comb
shanks
wattles

ear lobe
shoulder

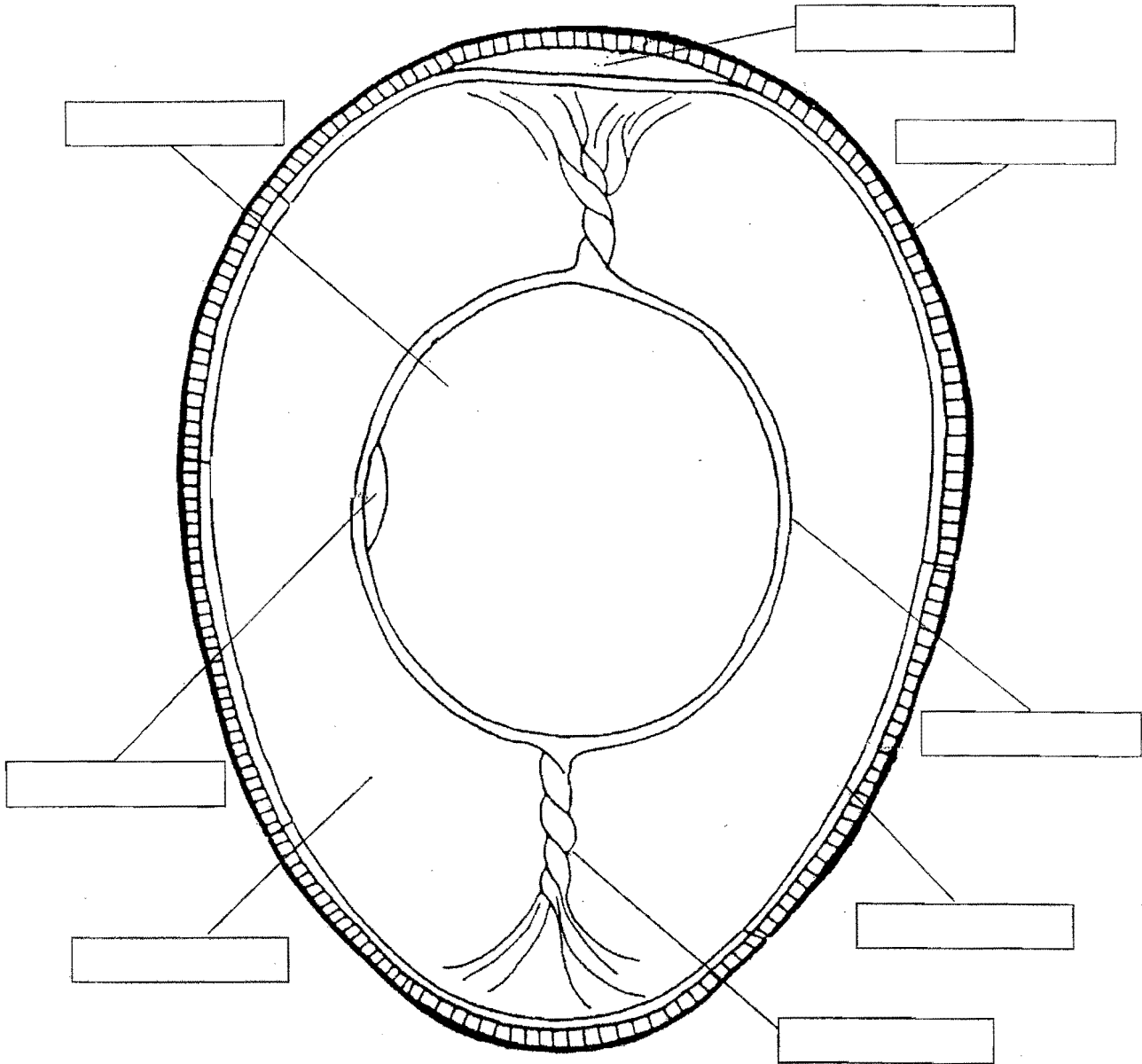


Fun Egg Facts

- ☞ Hens lay *600 billion eggs*, worldwide, each year - enough to circle the equator more than 760 times.
- ☞ Generally, chickens with *red earlobes* lay *brown eggs* and chickens with *white earlobes* lay *white eggs*.
- ☞ Araucanas & Ameraucanas lay colored eggs....light greens, blues, and pinks!
- ☞ To produce one egg, it takes 24-26 hours, and to do this the hen needs 5 oz. of food and 10 oz. of water. Thirty minutes later she starts all over again!
- ☞ *Yolk color depends on the diet of the hen.* Feed with corn or alfalfa produces medium yellow yolks while sorghum or wheat produces very light yolks.
- ☞ Between *70 and 80%* of all chicken eggs are laid before noon.
- ☞ The egg shell may have as many as *17,000 tiny pores*. Through them the egg can absorb flavors and odors. Storing eggs in cartons keep them fresh.
- ☞ Eggs are placed in the carton *large end up* to keep the air cell in place and the yolk centered.
- ☞ Eggs age more in *one day at room temperature* than in *one week in the refrigerator*.
- ☞ Eggs contain the *highest quality food protein* known. It is second only to mother's milk for human nutrition.
- ☞ The heaviest chicken egg ever laid weighed *1 pound* with a *double yolk* and *double shell*!!!
- ☞ May is "National Egg Month".

Egg Parts

Color each part of the egg a different color and label each part of the egg.

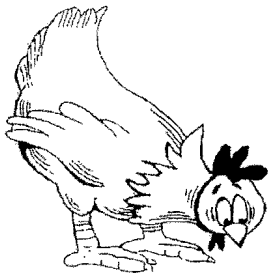


Use each word only once:

air cell
germinal disc
vitelline membrane

albumen or white
membranes
yolk

chalaza
shell



Chicken Word Search



Find & circle the following list of poultry terms. They may be found in any direction - up, down, backwards, forwards, and diagonal.

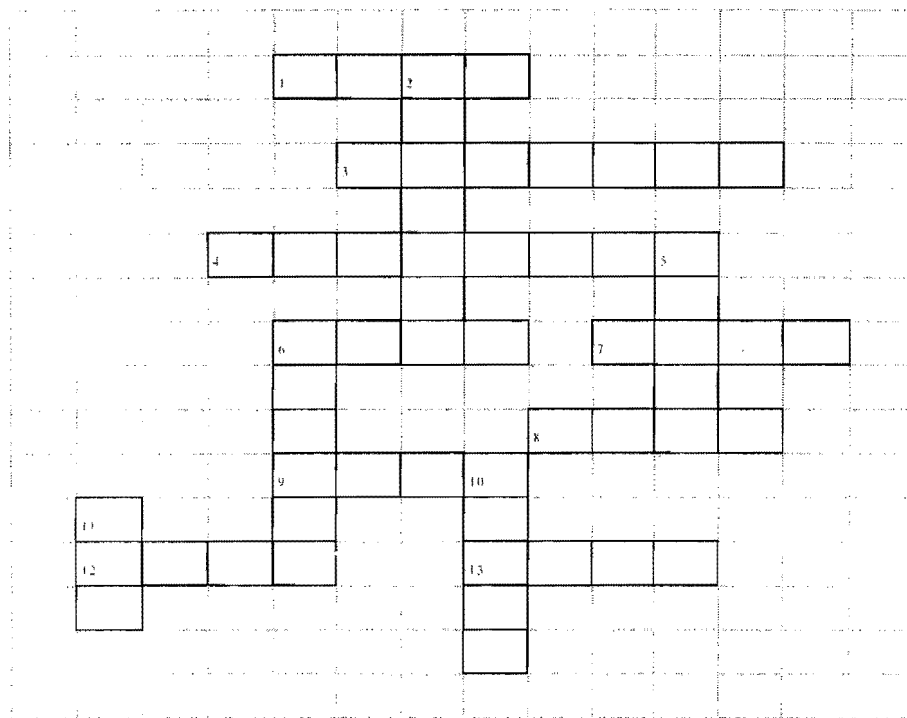
B	N	H	Y	T	B	E	B	T	C	A	E	R	S	T	E	L	L	U	P
G	I	O	L	D	E	R	R	D	U	P	W	Z	X	H	Q	U	L	T	Y
J	K	D	F	Y	B	J	O	E	A	O	B	G	J	A	Z	C	E	N	N
D	E	W	Z	C	V	Y	O	I	Q	Y	T	E	R	T	F	I	H	E	D
L	S	K	C	I	H	C	D	E	L	F	W	N	J	C	C	D	O	W	U
I	T	F	R	W	V	Y	E	H	U	E	F	W	I	H	A	E	G	H	L
W	R	F	G	H	E	I	R	N	C	A	R	M	C	W	E	G	G	A	M
H	I	D	E	D	T	Y	U	O	P	T	S	C	V	U	S	I	U	M	Q
G	H	O	U	R	T	G	L	E	G	H	O	R	N	H	O	T	W	P	D
J	R	V	O	C	W	K	I	L	P	E	E	X	B	M	O	C	N	S	L
N	T	O	I	N	K	E	R	O	G	R	O	P	S	Q	G	R	L	H	S
N	E	R	H	P	C	W	U	Q	X	H	J	R	I	E	T	Y	L	I	N
J	V	K	E	W	B	L	Y	O	P	E	E	R	S	T	G	H	I	R	O
W	H	O	C	D	T	Z	Q	U	I	T	T	U	R	K	E	Y	L	E	O
R	Y	I	L	I	R	S	B	H	S	E	Y	M	L	E	Q	A	S	J	D
I	K	R	B	Y	H	W	N	O	I	O	S	N	A	E	B	Y	O	S	A
G	A	H	O	U	W	C	O	C	G	H	E	N	Q	Y	I	N	M	X	O
U	E	T	P	E	V	R	X	A	U	M	V	H	S	T	B	R	A	H	H
J	B	E	Y	P	Q	B	L	E	D	O	Y	R	T	L	U	O	P	P	N
L	E	I	C	O	C	K	E	R	E	L	S	R	B	H	U	C	P	C	I

BEAK
BROILER
BROODER
CHICKEN
CHICKS
COCKEREL
COMB
CORN

DUCK
EGG
FEATHER
GOOSE
HATCH
HEN
LEGHORN
NEW HAMPSHIRE

POULT
POULTRY
PULLET
ROOSTER
SNOOD
SOYBEANS
TURKEY

Poultry Crossword

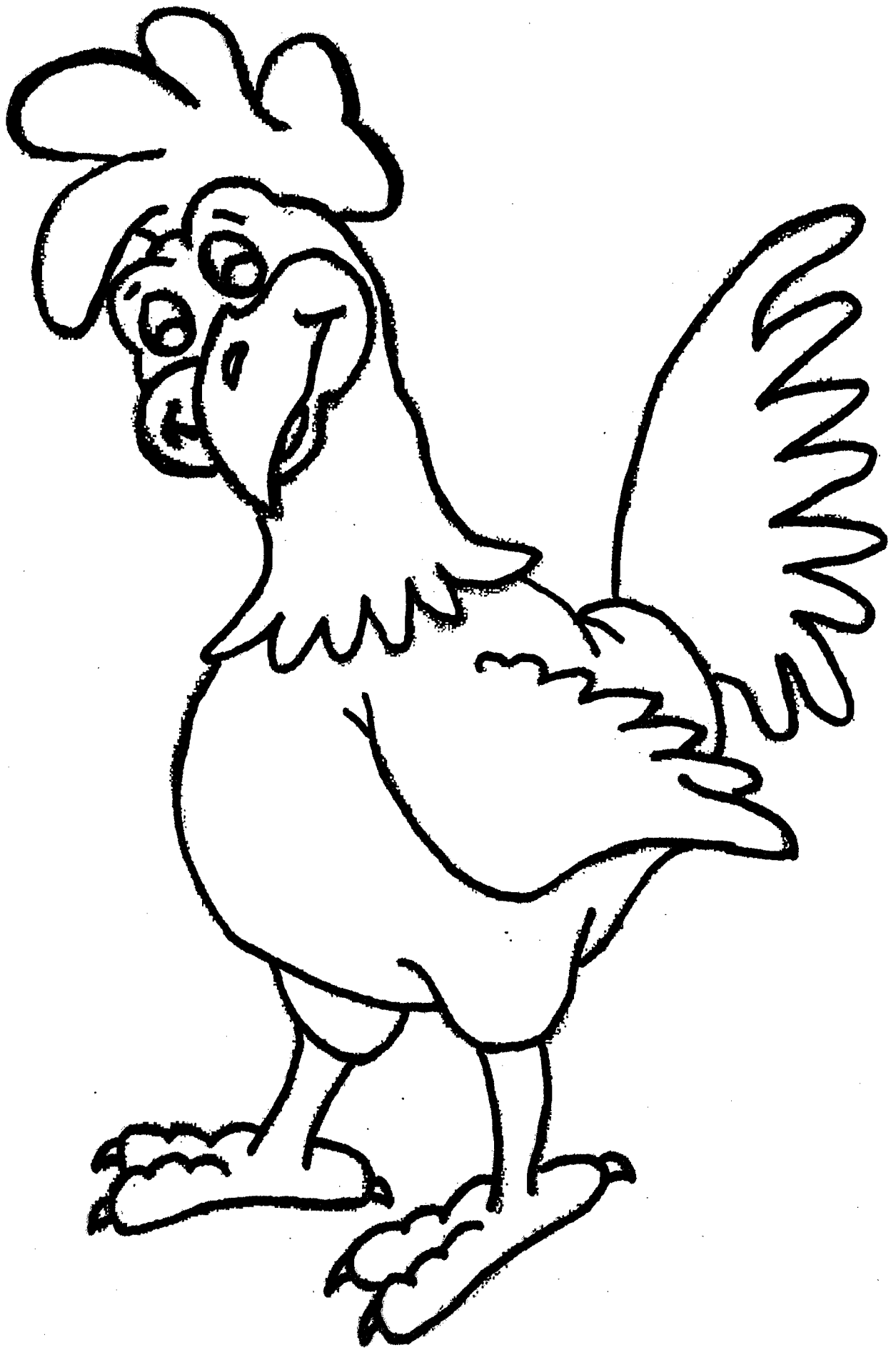


Across

1. Where poultry live
3. Chickens, ducks, turkeys
4. Covers outside of chicken
6. Chicken feed
7. Chicken mouth
8. Yellow part of egg
9. Rooster sound
12. What hen lays
13. Where hen lays egg

Down

2. Male chicken
5. Covering of egg
6. Baby chickens
10. Used to fly
11. Female chicken

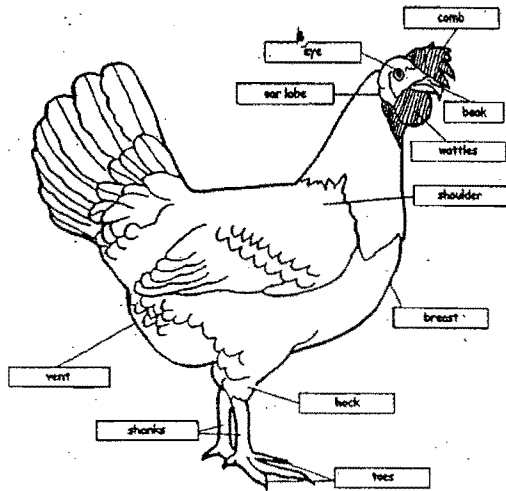


Answers

KEY

Parts of a Chicken

Color and label the parts of a chicken.



Use each word only once:

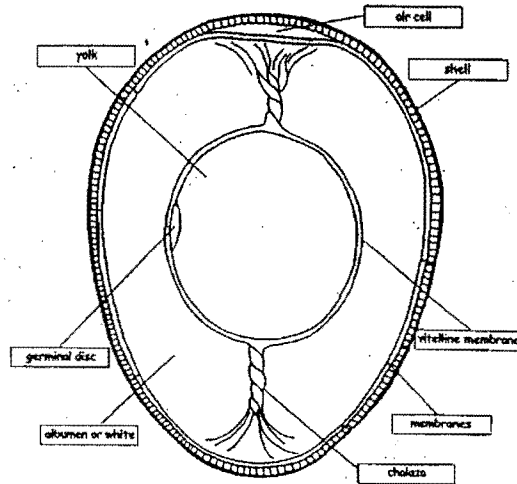
- beak
- breast
- comb
- ear lobe
- eye
- hock
- shank
- wattle
- vent
- shoulder

This worksheet is a part of the Introduction and Entomology Project developed under the leadership of the University of Illinois Extension, 1997.

KEY

Egg Parts

Color each part of the egg a different color and label each part of the egg.



Use each word only once:

- air cell
- albumen or white
- chalazae
- germinal disc
- membranes
- shell
- vitelline membrane
- yolk

This worksheet is a part of the Introduction and Entomology Project developed under the leadership of the University of Illinois Extension, 1997.

B	N	H	Y	T	E	T	C	A	E	R	S	T	E	L	U	P
G	I	O	L	D	E	D	U	P	W	Z	X	Q	U	L	T	Y
J	K	D	F	Y	B	J	E	A	O	B	G	J	Z	C	E	N
D	E	W	Z	C	V	Y	Q	Y	T	E	R	F	I	H	E	D
L	G	H	I	J	K	L	M	N	O	P	Q	R	S	T	U	V
I	T	F	R	W	V	Y	H	U	F	W	I	A	E	G	H	L
W	R	F	G	H	E	I	N	C	M	C	W	X	Y	Z	A	M
H	I	D	E	D	T	Y	U	O	P	S	C	V	U	I	U	Q
G	H	O	R	T	G	I	N	O	P	Q	R	S	T	U	V	D
J	R	V	O	R	T	G	I	N	O	P	Q	R	S	T	U	D
J	R	V	O	R	T	G	I	N	O	P	Q	R	S	T	U	D
N	T	O	I	N	E	R	G	O	P	S	Q	R	L	M	N	L
N	R	H	P	C	W	Q	X	H	J	I	E	T	Y	L	M	N
J	V	E	W	B	Y	O	P	E	R	S	T	G	H	I	J	L
W	H	O	D	Z	Q	U	I	E	M	L	E	Q	A	S	J	L
R	Y	I	L	R	S	B	H	E	Y	M	L	E	Q	A	S	J
I	R	B	Y	W	N	I	O	P	Q	R	S	T	U	V	W	A
G	H	O	U	W	C	G	N	Q	Y	I	M	X	O	P	N	L
U	T	P	E	V	X	A	U	M	V	H	S	T	B	A	H	H
J	E	Y	P	Q	B	L	E	D	O	S	R	B	H	U	P	N
L	E	I	J	K	L	M	N	O	P	Q	R	S	T	U	V	W

			B	A	R	N										
					O											
					P	O	U	L	T	R	Y					
						S										
				F	E	A	T	H	E	R	S					
						E					H					
						C	O	R	N		B	E	A	K		
						H						L				
						I					Y	O	L	K		
						C	R	O	W							
H						K					I					
E	G	G	S								N	E	S	T		
N											G					
											S					