



Illinois Extension

UNIVERSITY OF ILLINOIS URBANA-CHAMPAIGN

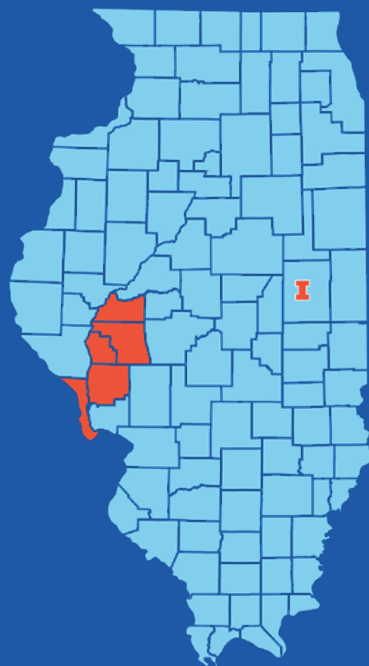


2020 IMPACT REPORT

University of Illinois Extension
Calhoun, Cass, Greene, Morgan, and Scott Counties

Illinois Extension

University of Illinois Extension provides practical education you can trust to help people, businesses, and communities solve problems, develop skills, and build a better future. Based in the College of Agricultural, Consumer and Environmental Sciences, Extension is the statewide outreach program of the University of Illinois at Urbana-Champaign.



Remote Learning	3
Community & Economic Development	4
4-H Youth Development	5
Agriculture & Natural Resources	7
Horticulture	8
Environment & Natural Resources	9
SNAP-Ed	10
Staff Directory & Finances	11



A Message from the Chancellor

The University of Illinois at Urbana-Champaign is an economic engine and a driver of innovation, deeply rooted in the Illinois prairie and engaged statewide, from Cook County to Cairo. Illinois Extension brings the university to your doorstep. Extension

educators live and work alongside you in every county, allowing the university to support local leaders, businesses, farmers, and residents to address grand challenges and everyday problems with practical, research-based solutions. As a youth, my own 4-H experience inspired a rewarding career in agricultural research and higher education. Today, it's an honor to lead this great public university and deepen its commitment to serve the people of Illinois.

Robert J. Jones
Chancellor, University of Illinois



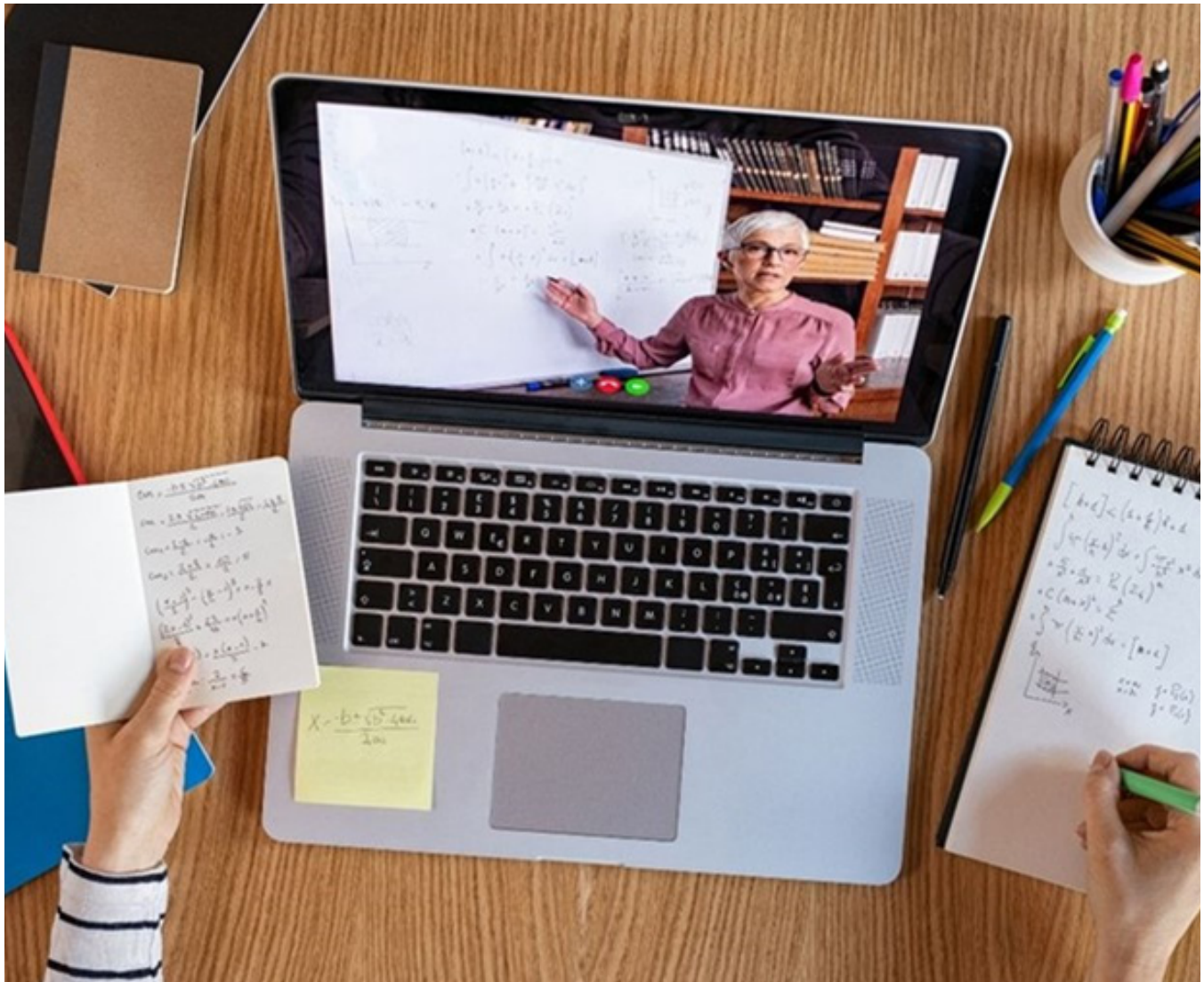
A Note From the County Director Extension's Goal Remains the Same: Inspire, Challenge, and Motivate

I believe that we, as Extension workers, are obligated to inspire, challenge, and motivate others! I believe it is my role as county director to challenge our staff to create and deliver programs for our communities that are significant, have an impact on people's lives, and that will inspire our participants to say, "Do it again!"

It is an honor for me to share how unique our staff is and to provide you with a sampling of their talents and moments of significance. I am a firm believer that the programming success stories highlighted in this report are a direct reflection of our staff's shared passion and purpose to serve others, even during the pandemic of 2020. We have all faced and embraced the unexpected this past year and, in doing so, I believe that we have all learned a great deal from the experience and are better prepared for our next life lesson.

I am proud to serve as the County Director in Calhoun, Cass, Greene, Morgan, and Scott counties and I ask that you take a moment to enjoy the highlights of this report.

Aaron Dufelmeier
County Extension Director



Working Together to Provide Remote Learning Opportunities

When early signs of COVID-19 arrived in Illinois, families and businesses across the state were forced to confront a reality unlike anything they could have imagined. With schools transitioning to virtual learning, parents were hungry for information about managing the physical and emotional health of their at-home learners. Families suddenly found themselves together at home more, where they explored new hobbies, such as gardening and food preservation. Farmers needed to navigate the numerous challenges facing both local and global food supply chains. Almost overnight, restaurants and retail stores had to rethink their business models or risk becoming irrelevant in a suddenly virtual world.

As the challenges mounted, the Illinois Extension network emerged as an effective method for creating and sharing timely, research-backed solutions to many of the most pressing issues we were grappling with.

I really enjoyed your presentation and so did the kids. We spent time on the website looking up all kinds of things. My students were very impressed and so was I.

CLASSROOM TEACHER

As schools searched for ways to keep students engaged in remote learning, Extension educators worked collaboratively to create and present remote programs on topics of interest. When Winchester schools requested a program on weather, Educator Duane Friend used a website showing Earth's winds in real time to engage eighth grade classes. Winds were shown at ground level and at multiple elevations above Earth, showing how high and low pressure systems work and what type of weather they bring.

There was a hurricane in the Caribbean Sea at the time of the presentation, providing an additional point of interest. Several handheld anemometers were loaned to the classes for students to examine wind speed outside the classroom.



SCALING UP

ILLINOIS RESTAURANT OPERATIONS FINANCIAL CONSIDERATIONS



Extension Helps Restaurants Adjust to Shifting COVID-19 Restrictions

As local restaurants prepared to reopen in Illinois, Extension hosted a two-part webinar series, *Scaling Up Illinois Restaurant Operations*. In the first broadcast, Gretchen Ernst of Gordon Food Service discussed how supply and demand during the pandemic was affecting restaurant food and kitchen supplies. University of Illinois experts Jorden Brotherton, clinical assistant professor of hospitality management, and Carter Phillips, instructional chef and quantity food manager, provided menu analysis and recipe costing. Dustin Allen, chef at Edge in Peoria, shared his personal experience dealing with the impact of COVID-19 on his restaurant.



Watch the first webinar:
<https://go.illinois.edu/restaurant>

During the second session, Larry Lynch, senior vice president of the National Restaurant Association, provided state-specific restaurant re-opening guidance, including information on food safety, cleaning and sanitizing, employee health and hygiene, and social distancing. Brotherton returned to discuss safety and the guest experience, touching on topics like measuring the perception and effectiveness of safety procedures with a set of “fresh eyes,” enabling frontline staff to look for service failures, and putting safety practices on display. The final speaker was Tristan Popadziuk, chief operating officer of CxT Roasting Company, who stressed additional safety precautions and shared how he modified operations to enhance curbside and takeout orders, while using social media to boost online sales.



Watch the second webinar:
<https://go.illinois.edu/restaurant2>



LGE Local Government Education

Our local government education programs increased outreach in response to the COVID-19 crisis and developed a critical partnership with the Illinois Office of Broadband's initiative to extend high-speed internet access across the state.



go.illinois.edu/communitybroadband

The 2020 Leadership Academy pivoted to a virtual platform, offering county officials online workshops on a variety of topics, including crisis communications, managing economic development initiatives, finding and using data, leadership styles, managing change, ethical considerations, fiscal and economic impacts of COVID-19, and reversing population decline.



go.illinois.edu/leadershipacademy

Statewide Webinar Reach



37
Webinars in 2020



1,706
Reached In Community Involvement
and Leadership Webinars



926
Reached in Diversity, Equity,
and Inclusion Webinars



5,182
Reached in Economic and
Financial Stability Webinars



1,115
Reached in Community Resiliency Webinars

The University of Illinois Extension's community and economic development team helps communities build capacity for creative and informed decision-making to enhance their quality of life.



<https://go.illinois.edu/LGE>

HEALTH! ROCKS!

INSPIRED TO BE SUBSTANCE FREE

4-H Adapts to a Virtual Platform

4-H youth development programs easily adapted to the needs of virtual classrooms in 2020. Health Rocks, which helps youth make healthy decisions about drug and alcohol use, in addition to teaching communication, relationship, and overall life skills, was provided to seventh and eighth grade students in Winchester and North Greene. Seventh graders at North Greene also participated in the Be Safe program, which creates environments that are physically and emotionally safe.

4-H Hall of Fame Honorees

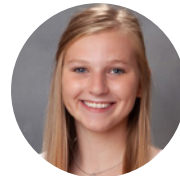


Todd Burrus
Cass County



Jay Harris
Morgan County

State 4-H Scholarship and Award Winners



Katie White
Morgan County
Legacy of Leadership Scholarship
State Leadership Award



Anne Becker
Morgan County
Legacy of Leadership Scholarship
Key Award
LCP Award
Youth Leadership Team



Austin Dufelmeier
Morgan County
Legacy of Leadership Scholarship
State Leadership Award



4-H members become videographers for their 4-H projects.

Pandemic Changes, but Doesn't Stop the Show

4-H members in Calhoun, Cass, Greene, Morgan, and Scott counties faced more than a few challenges this exhibit season, but they stepped up to meet them all. Cancellation of traditional fairs meant a change in the way projects were exhibited. Pictures and reports replaced face-to-face conversations with judges. Livestock, usually primped and pampered, remained at home on the farm. Videos were taken. There were 650 livestock videos judged, and more than 300 pictures and reports. To say we are proud is an understatement.

View the Virtual Fair results:

<https://extension.illinois.edu/ccgms/4-h-calhoun-cass-greene-morgan-and-scott-counties>

Thriving youth are the core of healthy, robust communities. Our mentorship-based youth development model applies a holistic development framework. It focuses on social competence, academic success, career development, and community connection. The 4-H club experience creates opportunities and environments for all youth to thrive — today and tomorrow.



Follow us on Facebook:
facebook.com/UofIExtensionCCGMS



Timber Seminar Helps Landowners Determine Value

A timber harvesting and taxes seminar was held in Carrollton on February 15, 2020. Extension State Forester Jay Hayek presented information for forest land owners on selling and marketing their timber, establishing a basis for tax purposes, and optimizing timber value.

The natural wonder of Illinois is more than just its beautiful scenery. The land provides recreation for residents and visitors, habitat for pollinators and wildlife, pastures for grazing livestock, fields for growing food, and the safe water that is essential for all living things. Threats to our land, air, and water can be managed with the identification, promotion, and adoption of environmentally-sustainable policies and practices.

Carefully developed green spaces and natural assets help youth and adults improve learning and enhance physical and mental wellness. Sound environmental and agricultural policies contribute to a sustainable and diverse environment, increase comfort, reduce government costs, and enhance property values.

Water, land, and air quality have significant implications for our survival. These shared resources must be managed through ecological balance and sustainable practices. Our future depends on our ability to effectively steward these resources for generations to come.

As a new timber land owner, realizing the need to have a forester evaluate the property and create a basis and a depletion figure is a huge advantage.

All the information was extremely helpful and informative. Pricing, contracts, and values all extremely valuable. Wish we had more time. It was great.



A timber sales and marketing seminar held in February helped landowners understand time value.



Insects and Cover Crops

Several cover crop and non-cover crop experimental plots are located across the region. As part of a two-year statewide study on cover crops and insects, Extension Educators Ken Johnson and Duane Friend obtained insect samples from the plots. These samples were delivered to Extension Entomologist Nick Seiter for identification and reporting. The data will add to a statewide report on insect populations in cover crops, seeking to determine the benefit and harm in order to provide insect scouting and termination timing for cover crops. The current recommendation is to terminate cover crops a week or two ahead of planting to avoid creating a “green bridge” for insects.



Read more on the Extension forestry website:
<https://extension.illinois.edu/forestry>



Good Growing Gives Gardeners Answers for Healthier Plants

Good Growing is a multi-faceted media platform featuring print media, a blog, podcasts, videos, and webinars, making it a robust and modern source for Extension information. Nearly 700 subscribers receive a weekly email with links to that week's blog post and podcast, as well as past articles that are relevant to the time of year. The onset of the pandemic created a surge in home gardening interest. Americans were buying seeds, plants, and equipment in record numbers. Subscriptions to the email newsletter grew an astonishing 417%. The Good Growing team recognized a need for more resources to be conveyed in new ways.

They increased their output, publishing 72 posts in 2020. Horticulture Educator Ken Johnson contributed 25 posts that were viewed 13,000 times. In total, the Good Growing blog had over 98,000 total page views last year.

In March, the team launched two new initiatives. Starting a Garden, a series of educational articles for beginning gardeners, took readers step-by-step through the entire process from planning through harvest. It also included articles outlining how to grow popular vegetable crops. In total, the 26 articles in this series were viewed over 16,000 times.



The Good Growing team embodies the very reason that Extension exists - to serve the communities across Illinois, whatever their needs.



In recognition of their accomplishments in 2020, the Good Growing team received a University of Illinois Extension Team Excellence Award.

The team also began a weekly Good Growing podcast, marking a whole new delivery method for Extension home gardening information. Extension educators or specialists were invited to talk about their area of expertise and to answer home gardening questions. The podcast's RSS feed is linked to major platforms, such as iTunes, Google Podcast, and other third-party podcast apps, making it widely accessible (just ask your smart speaker to "play the Good Growing podcast."). In 2020, the Good Growing team produced 38 episodes that have been played more than 4,700 times. In November, they added video, recording each podcast and uploading the videocasts to YouTube. Eight videos were produced in 2020 and have been viewed over 1,100 times.

The team's efforts serve as a shining example of the impact achieved by creative and dedicated Extension educators during the pandemic.

This webinar was fantastic. It was very informative. I learned a great deal and plan to watch it again. I've paid for webinars that weren't nearly as good as this one. I hope my tax dollars are going towards this program. It is worth every penny. Thank you!

GOOD GROWING WEBINAR PARTICIPANT

Check out these popular Good Growing videos!

- Growing Garlic: youtu.be/NwzuCqchqqQ
- Making Terrarium Ornaments: youtu.be/2-uuOwERDK0
- Making Ornamental Balls : youtu.be/wjENT9UexwM



Everyday Environment Webinar Series Provides Practical Ways to Enhance Our Natural Resources

To provide valuable environmental education throughout the pandemic, Duane Friend, energy and environmental stewardship educator, co-created Everyday Environment, a weekly environmental webinar series demonstrating small ways that people can have a positive impact on the environment. The webinars ran from April through June and drew 150 - 300 participants per session, ranging from local to international.

Webinar topics included:

- Explaining the Greenhouse Effect
- Coyotes
- Woodpeckers
- Pollinators
- Constructing a Farm Pond
- Nutrient Loss Reduction
- Stormwater Management

I have been watching for your webinar on YouTube. It was just an awesome program. I believe the Environmental Series is so far the best and most informative series that Extension has offered in some time. Thank you so much. Looking forward to the rest of the series.

EVERYDAY ENVIRONMENT VIEWER



Prairie Restoration

ILLINOIS EXTENSION
COLLEGE OF AGRICULTURAL, CONSUMER
& ENVIRONMENTAL SCIENCES

As part of the Everyday Environment series, Duane Friend discussed Illinois' vast prairies of the past and the need for prairie management, including guidelines for controlled burns.



EVERYDAY ENVIRONMENT WEBINAR SERIES

ILLINOIS EXTENSION
COLLEGE OF AGRICULTURAL, CONSUMER
& ENVIRONMENTAL SCIENCES



EVERYDAY ENVIRONMENT WEBINAR SERIES

ALL ABOUT CLOUDS

1 PM | JUNE 25

ILLINOIS EXTENSION
COLLEGE OF AGRICULTURAL, CONSUMER
& ENVIRONMENTAL SCIENCES



EVERYDAY ENVIRONMENT WEBINAR SERIES

SKY SPECTACLES

1 PM | APRIL 9

ILLINOIS EXTENSION
COLLEGE OF AGRICULTURAL, CONSUMER
& ENVIRONMENTAL SCIENCES



EVERYDAY ENVIRONMENT WEBINAR SERIES

PLANNING A POND

1 PM | JUNE 4

ILLINOIS EXTENSION
COLLEGE OF AGRICULTURAL, CONSUMER
& ENVIRONMENTAL SCIENCES



Prairies and Controlled Burns:
<https://www.youtube.com/watch?v=Lln79LAlj7Q>



SUPPLEMENTAL NUTRITION ASSISTANCE PROGRAM EDUCATION

SNAP-Ed works with Illinois families in need to make the healthier choice an easier choice. Through classes, workshops and collaboration with community partners to adopt research-based solutions encouraging healthier nutrition and activity choices, SNAP-Ed positively affects families and communities.

In 2020, SNAP-Ed virtual education and resources:



Addressed community partner needs by providing resources and collaboration opportunities



Provided live, virtual classes families could join from their own phone, tablet, or computer



Distributed print materials to families on topics such as recipes made with common pantry ingredients



Increased reach via social media, text, and e-news with relevant nutrition and activity information



Created a new community food resource map, Find Food Illinois, on the Eat. Move. Save. website

During our virtual lesson on shopping for fruits and vegetables on a budget, a participant shared she did not know she could use her SNAP benefits at the local farmers market. At the next class, she said she started doing this and enjoyed purchasing and cooking with the in-season produce.

- Tina Miller and Rebecca Schafer, SNAP-Ed community workers

SNAP-Ed Community Partnerships



10
K-12 Schools



5
Early Childhood



14
Agencies or Community Centers



5
Emergency Food Sites

SNAP-Ed Programming Goes Virtual

Over two million Illinois residents rely on the Supplemental Nutrition Assistance Program for food assistance, according to May 2020 totals from Illinois Department of Human Services, with a 14% spike in the latter half of the year associated with the effects of COVID-19. Issues with access to and affordability of healthy food options can perpetuate chronic illness. Healthy people and communities require safe, nutritious, and abundant food and the education to make every food choice and every food dollar count. The SNAP-Ed team continuously shares resources to increase food security in our communities and to provide families with relief during these challenging times.

Adult nutrition classes, combining nutrition education and food resource management principles, encourage families to make healthy food choices on a limited budget. In both Cass and Morgan counties, Community Workers Tina Miller and Becky Schafer made sure these resources stayed available to families during the pandemic. The virtual classes were very successful. Participants were eager to share with community workers the diet changes they adopted while staying at home. Morgan County also conducted virtual nutrition education for children.

Melinda Vortman, SNAP-Ed program coordinator, and Abby Rose, Extension educator, worked with local agencies to adopt practices supporting healthy environments. They provided healthy recipe cards for food pantries to distribute to clients, introduced more nutritious menu items to schools, and created attractive produce displays in schools and food pantries. Vortman and Rose also hosted meetings for Healthy Jacksonville Coalition's Food/Nutrition Workgroup via Zoom, allowing local agencies to actively address food insecurity during a time in which families faced financial challenges caused by the pandemic. The coalition's work resulted in two food giveaways in Jacksonville.





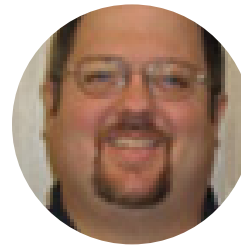
Aaron Dufelmeier
County Extension
Director



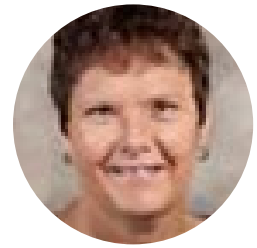
Georgi Flowers
Office Support Associate



Duane Friend
Energy and
Environmental
Stewardship Educator



Dustin Fritsche
CED Program
Coordinator



Tanya Hetelle
4-H Program
Coordinator



Ken Johnson
Horticulture Educator



April Littig 4-H Youth
Development Educator



Tina Miller
Community Worker
SNAP-Ed



Brenda Robinson
Office Support Associate



Abigail Rose
SNAP-Ed Educator



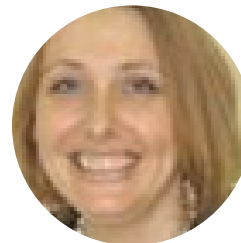
Jennifer Russell
Community & Economic
Development Educator



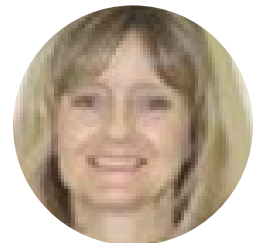
Becky Schafer
Community Worker
SNAP-Ed



Michelle Berg Vogel
ANR Program
Coordinator

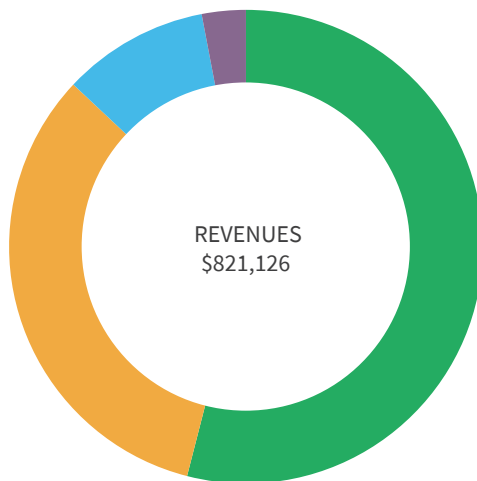


Melinda Vortman
SNAP-Ed Program
Coordinator

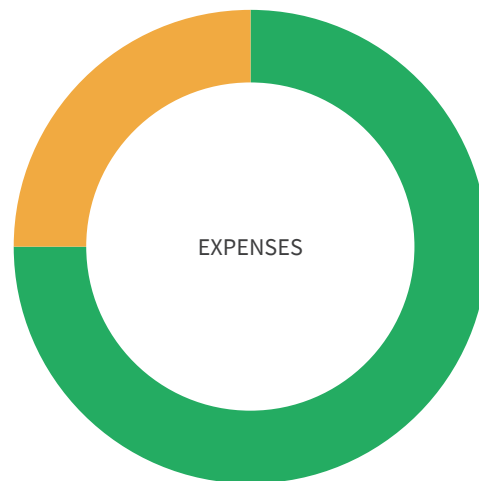


Terri Wilson
Office Support Specialist

FINANCIAL REPORT



54% Local
33% State
10% Federal
3% University



75% Personnel
25% Non-Personnel

EXTENSION COUNCIL MEMBERS

Will Andras, Scott County
Kirby Ballard, Greene County
Caroline Bartz, Morgan County
Jamie Behrends, Cass County
Todd Behrends, Cass County
J.R. Blair, Cass County

Mary Crawford, Calhoun County
Jack Liddick, Cass County
Sally Mansfield, Greene County
Tim Preston, Morgan County
Bob Schaefer, Cass County
Robert Schafer, Scott County

Lance Steckel, Scott County
Diane Stelbrink, Calhoun County
Cass Wessell, Cass County
Tammy White, Morgan County

OFFICE INFORMATION

Morgan County

104 N. Westgate
Jacksonville, IL 62650
217-243-7424
Fax: 217-243-1544
uie-ccgms@illinois.edu
Mon. - Fri. 8 a.m. - 4:30 p.m.
Closed noon - 1 p.m.

Calhoun County

818 S. Park, P.O. Box 366
Hardin, IL 62047
618-576-2293
Fax: 618-576-8013
Tues. & Thurs. 8 a.m. - 4:30 p.m.
Closed noon - 1 p.m.

Cass County

651 S. Job
Virginia, IL 62691
217-452-3211
Fax: 217-452-7260
Mon., Wed., & Fri. 8 a.m. - 4:30 p.m.
Closed noon - 1 p.m.

Greene County

RR 3, Box 129C
Carrollton, IL 62016
217-942-6996
Fax: 217-942-3827
Mon. & Wed. 8 a.m. - 4:30 p.m.
Closed noon - 1 p.m.

Scott County

401 N. Walnut
Winchester, IL 62694
217-742-9572
Fax: 217-742-3582
Tues. & Thurs. 8 a.m. - 4:30 p.m.
Closed noon - 1 p.m.

ONLINE



facebook.com/UoflExtensionCCGMS/



extension.illinois.edu/ccgms

Illinois Extension

College of Agricultural, Consumer & Environmental Sciences

University of Illinois, U.S. Department of Agriculture, Local Extension Councils Cooperating.
University of Illinois Extension provides equal opportunities in programs and employment.



If you need a reasonable accommodation to participate, please contact the event coordinator. Early requests are strongly encouraged to allow sufficient time to meet your needs.

The Illinois Nutrition Education Programs are funded by the Supplemental Nutrition Assistance Program (SNAP) and Expanded Food and Nutrition Education Program (EFNEP).

Issued in furtherance of Cooperative Extension work, Acts of May 8 and June 30, 1914, in cooperation with the US Department of Agriculture by the Director, Cooperative Extension Service, and University of Illinois.