

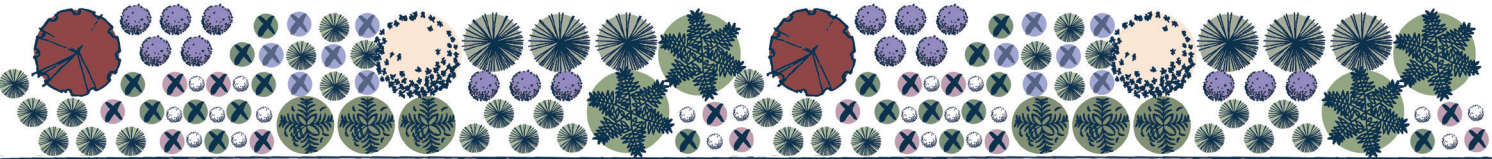
WET WOODLAND GARDEN

It’s no secret that grass can be difficult to grow in wet, shaded areas of the yard. Luckily, Illinois is home to dozens of plant species adapted for exactly this situation. Instead of a traditional lawn, homeowners can mix shade- and water- loving groundcovers, like sedges and ferns, with taller, blooming plants and spring ephemerals that flourish.

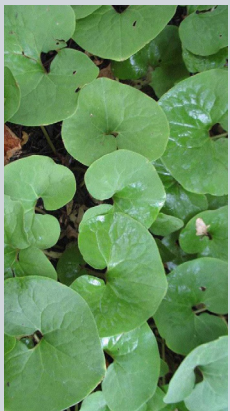
This guide features a planting plan focused on natives typically found in wet Illinois woodlands. The plan creates year-round interest for homeowners and extends the foraging season for pollinators. Additionally, the trees and native plants help reduce stormwater runoff. Keep in mind that while only native plants are used in this example, non-natives can also benefit pollinators. For more information, visit the University of Illinois Extension Horticulture website.

ADDITIONAL PLANTING OPTIONS

If you have more space, you can take the basic planting plan and repeat it, as such.




If you have less space, below are groupings that are suitable for smaller beds.



WILD GINGER

☀️ 🌧️ 🌑


💧 💧 💧



GREAT BLUE LOBELIA

☀️ 🌧️ 🌑


💧 💧 💧



TUFTED HAIRGRASS

☀️ 🌧️ 🌑

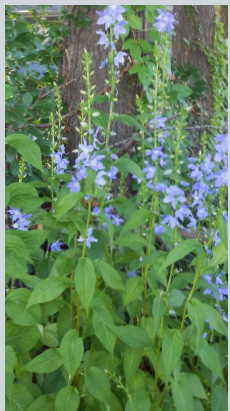
💧 💧 💧



WILD GERANIUM

☀️ 🌧️ 🌑


💧 💧 💧



TALL BELLFLOWER

☀️ 🌧️ 🌑

💧 💧 💧



CHRISTMAS FERN

☀️ 🌧️ 🌑

💧 💧 💧

WHERE TO FIND PLANTS AND MORE INFORMATION

The plant palette is inspired by the Red Oak Rain Garden: www.redoakraingarden.org. The Illinois Native Plant Society webpage lists sources of native plants. For more information about plants, see the University of Illinois Extension Horticulture website.

PUT YOUR NATIVE PLANT GARDEN ON THE MAP

You can be part of a network of native plantings by registering your Illinois native plant garden or rain garden. This helps build community and encourage native plant use.

Add your native plant garden to the map: <http://go.illinois.edu/GardenMap>

ACKNOWLEDGMENTS

Funding provided by Illinois Environmental Protection Agency and Illinois-Indiana Sea Grant.
Produced by C. Eliana Brown, University of Illinois Extension.
Researched and designed by Layne Knoche with contributions from Kate Gardiner, University of Illinois Extension.
Edited by Irene Miles and Joel Davenport, Illinois-Indiana Sea Grant.



WET WOODLAND GARDEN

NATIVE ILLINOIS PLANTS FOR WET AND SHADED GARDENS

PLANTING PLAN

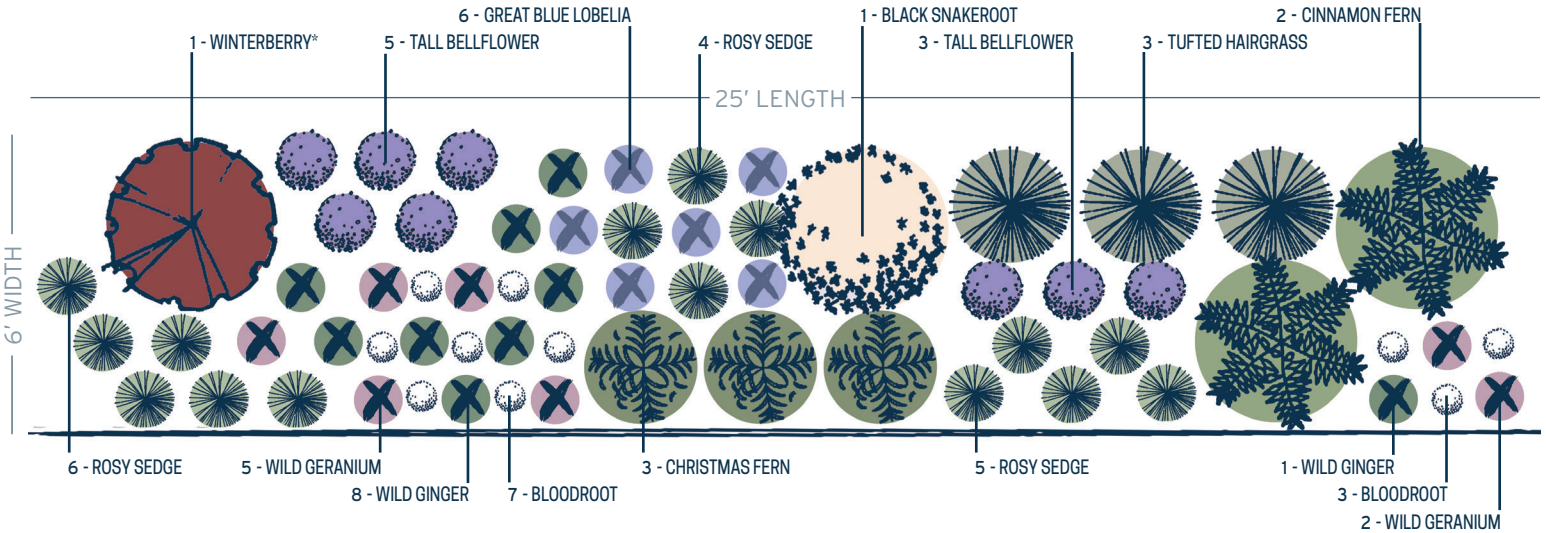
Category Common Name (Total quantity in design)

GROUNDCOVER: Rosy Sedge (15), Wild Geranium (7), Wild Ginger (9), Christmas Fern (3), Tufted Hairgrass (3)

SEASONAL: Bloodroot (10), Tall Bellflower (8), Great Blue Lobelia (6)

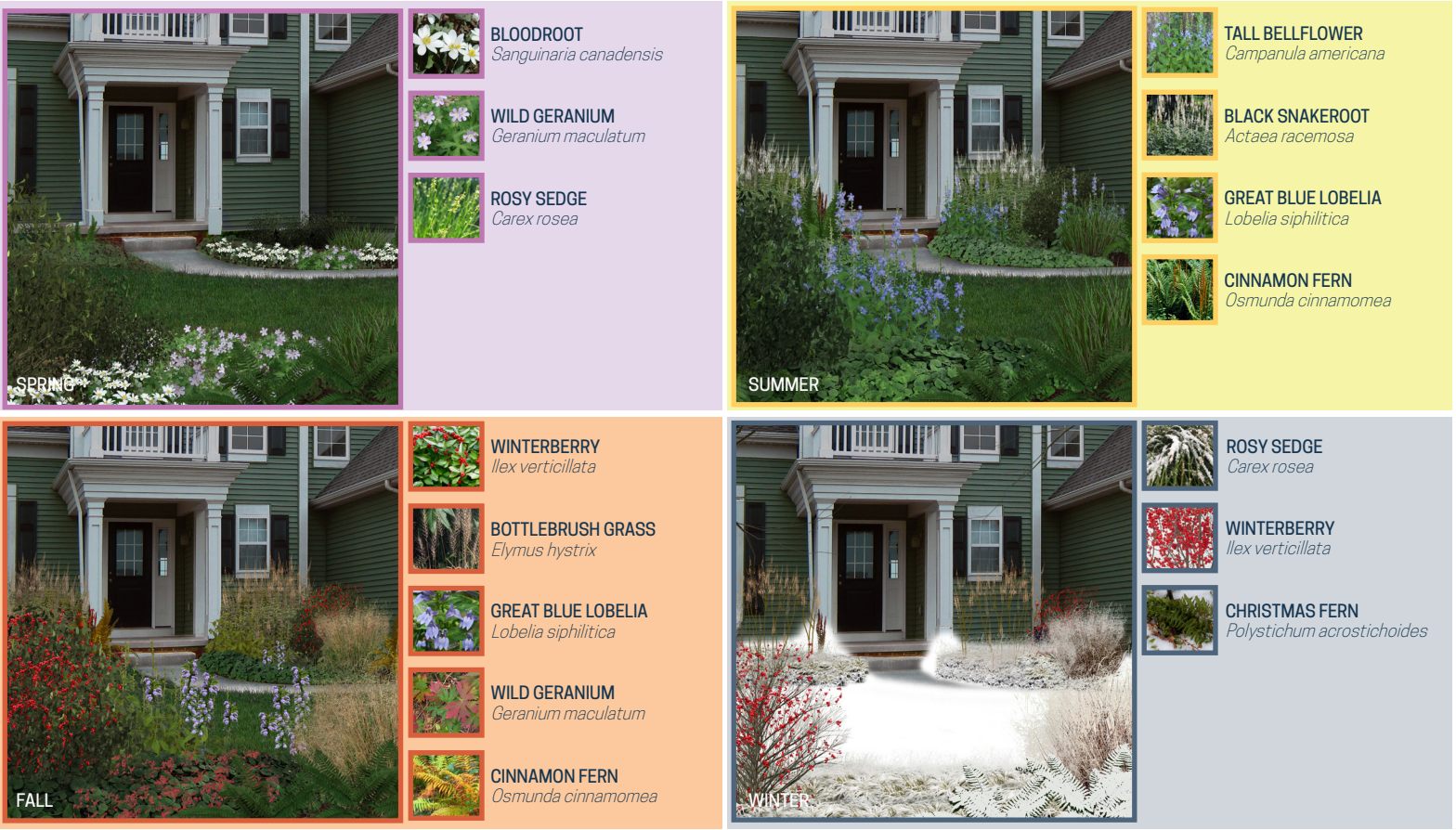
STRUCTURAL: Winterberry* (1), Black Snakeroot (1), Cinnamon Fern (2)

See the Red Oak Rain Garden Brochure for information related to the Groundcover, Seasonal, and Structural categories.



FORBS ORGANIZED BY BLOOM TIME		SPRING	SUMMER	FALL	WINTER
BLOODROOT <i>Sanguinaria canadensis</i>					
WILD GINGER <i>Asarum canadense</i>					
WILD GERANIUM <i>Geranium maculatum</i>					
TALL BELLFLOWER <i>Campanula americana</i>					
BLACK SNAKEROOT <i>Actaea racemosa</i>					
GREAT BLUE LOBELIA <i>Lobelia siphilitica</i>					
OTHERS ORGANIZED BY HEIGHT					
ROSY SEDGE <i>Carex rosea</i>					
CHRISTMAS FERN <i>Polystichum acrostichoides</i>					
CINNAMON FERN <i>Osmunda cinnamomea</i>					
TUFTED HAIRGRASS <i>Deschampsia caespitosa</i>					
SHRUBS					
WINTERBERRY* <i>Ilex verticillata</i>					

FOUR SEASON INTEREST



SUNLIGHT	HEIGHT	MOISTURE	PREFERRED SOIL TYPE	COMMON ECOSYSTEM	ATTRACTIONS	DROUGHT TOLERANCE	SPACING	
		1/2'-1'		FERTILE LOAM	WOODLAND OPENING			1/4'-1/2'
		1'-2 1/2'		LOAM	WOODLAND			1'-1 1/2'
		1'-1 1/2'		LOAM	WOODLAND			1'-1 1/2'
		2'-6'		FERTILE LOAM	WOODLAND			1'-2'
		3'-7'		FERTILE LOAM	WOODLAND			2'-4'
		2'-3'		FERTILE LOAM	LOW WOODLAND			1'-1 1/2'
		1/2'-1'		LOAM	WOODLAND			1'-2'
		1 1/2'-2 1/2'		LOAM, ROCKY	LOW WOODLAND			1'-2'
		2'-4'		SANDY, ACIDIC	LOW WOODLAND			2'-3'
		2'-3'		LOAM	WOODLAND			1'-2'
		3'-6'		ACIDIC LOAM	LOW WOODLAND			3'-5'

* For a female Winterberry to produce the best display of fruit, a male Winterberry should be planted within 15 feet for optimal pollination.

SOURCES
ILLINOIS WILDFLOWERS - <http://www.illinoiswildflowers.info/>
PRAIRIE MOON NURSERY - <https://www.prairiemoon.com/gardener-experience>

LEGEND

- PART SUN
- SHADE
- WET SOIL
- MOIST SOIL
- MESIC SOIL
- ATTRACTS BEES
- ATTRACTS HUMMINGBIRDS
- ATTRACTS BIRDS
- ATTRACTS A VARIETY OF BUTTERFLIES
- ATTRACTS MONARCH BUTTERFLIES
- ATTRACTS CATERPILLARS
- DROUGHT TOLERANT
- SEMI-DROUGHT TOLERANT
- NOT DROUGHT TOLERANT