

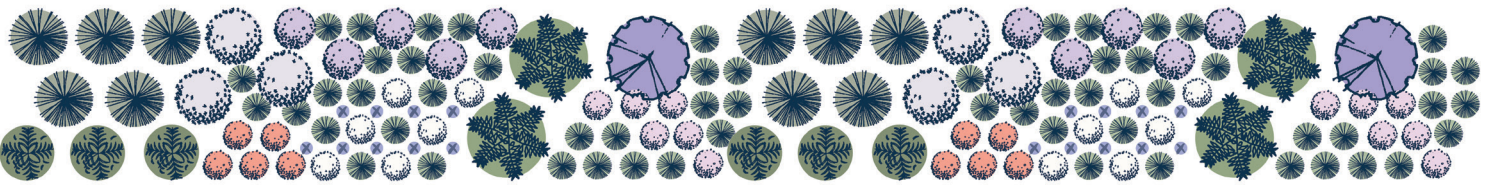
WOODLAND BORDER GARDEN

It’s no secret that grass can be difficult to grow in shaded areas of the yard. Luckily, Illinois is home to dozens of plant species adapted for exactly this situation. Instead of a traditional lawn, homeowners can mix shade-loving groundcovers, like sedges and ferns, with taller, blooming plants and spring ephemerals that flourish.

This guide features a planting plan focused on natives typically found in Illinois woodland borders. The plan creates year-round interest for homeowners and extends the foraging season for pollinators. Additionally, the trees and native plants help reduce stormwater runoff. Keep in mind that while only native plants are used in this example, non-natives can also benefit pollinators. For more information, visit the University of Illinois Extension Horticulture website.

ADDITIONAL PLANTING OPTIONS

If you have more space, you can take the basic planting plan and repeat it, as such.



If you have less space, below are groupings that are suitable for smaller beds.

					
BLUE WILD INDIGO	ANISE HYSOP	BOTTLEBRUSH GRASS	WILD GERANIUM	HAIRY WOOD MINT	SMOOTH BLUE ASTER
  	  	  	  	  	  
  	  	  	  	  	  

WHERE TO FIND PLANTS AND MORE INFORMATION

The plant palette is inspired by the Red Oak Rain Garden: www.redoakraingarden.org. The Illinois Native Plant Society webpage lists sources of native plants. For more information about plants, see the University of Illinois Extension Horticulture website.

PUT YOUR NATIVE PLANT GARDEN ON THE MAP

You can be part of a network of native plantings by registering your Illinois native plant garden or rain garden. This helps build community and encourage native plant use.

Add your native plant garden to the map: <http://go.illinois.edu/GardenMap>

ACKNOWLEDGMENTS

Funding provided by Illinois Environmental Protection Agency and Illinois-Indiana Sea Grant.
Produced by C. Eliana Brown, University of Illinois Extension.
Researched and designed by Layne Knoche with contributions from Kate Gardiner, University of Illinois Extension.
Edited by Irene Miles and Joel Davenport, Illinois-Indiana Sea Grant.



WOODLAND BORDER GARDEN

NATIVE ILLINOIS PLANTS FOR PARTLY SHADED GARDENS

PLANTING PLAN

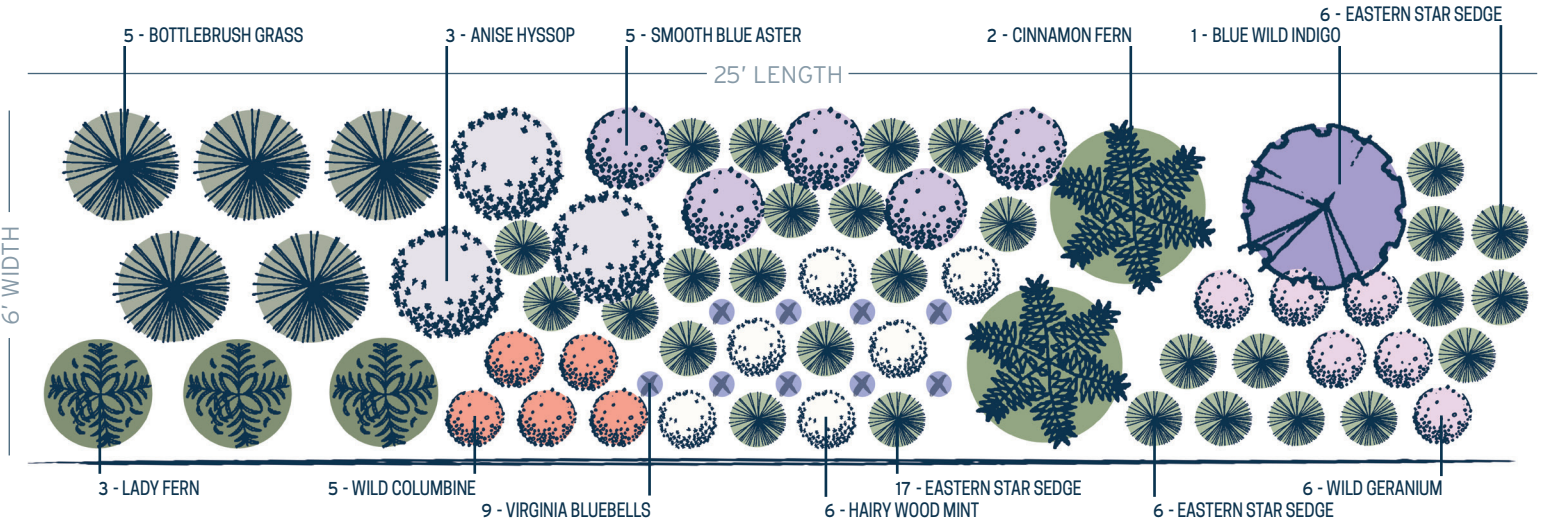
Category Common Name (Total quantity in design)

GROUNDCOVER: Eastern Star Sedge (29), Wild Geranium (6)

SEASONAL: Virginia Bluebells (9), Wild Columbine (5), Hairy Woodmint (6), Smooth Blue Aster (5), Lady Fern (3)

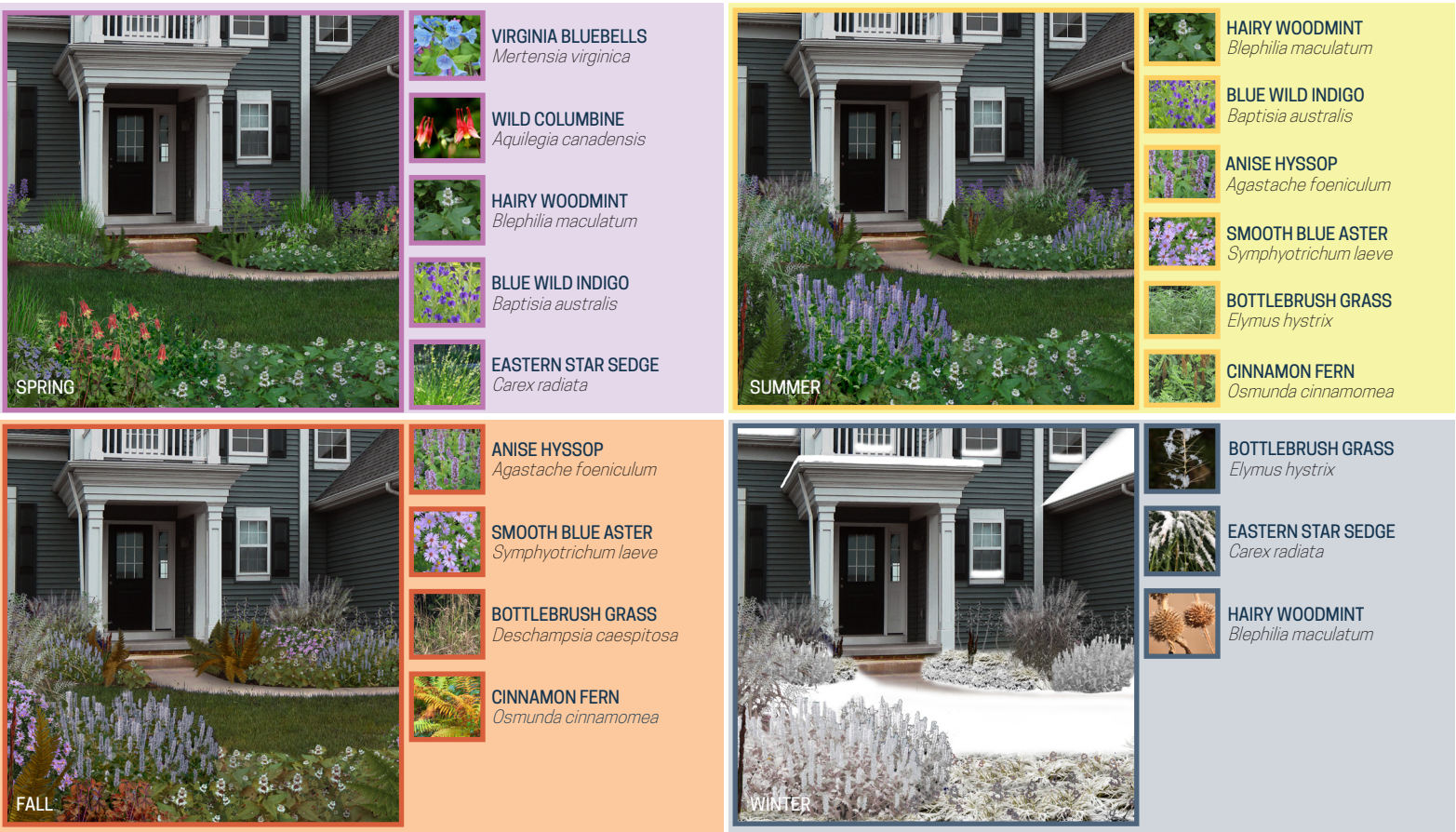
STRUCTURAL: Blue Wild Indigo (1), Bottlebrush Grass (5), Cinnamon Fern (2)

See the Red Oak Rain Garden Brochure for information related to the Groundcover, Seasonal, and Structural categories.



FORBS ORGANIZED BY HEIGHT		SPRING	SUMMER	FALL	WINTER
VIRGINIA BLUEBELLS <i>Mertensia virginica</i>					
WILD COLUMBINE <i>Aquilegia canadensis</i>					
WILD GERANIUM <i>Geranium maculatum</i>					
HAIRY WOODMINT <i>Blephilia hirsuta</i>					
BLUE WILD INDIGO <i>Baptisia australis</i>					
ANISE HYSSOP <i>Agastache foeniculum</i>					
SMOOTH BLUE ASTER <i>Symphyotrichum laeve</i>					
EASTERN STAR SEDGE <i>Carex radiata</i>					
BOTTLEBRUSH GRASS <i>Elymus hystrix</i>					
LADY FERN <i>Athyrium filix-femina</i>					
CINNAMON FERN <i>Osmunda cinnamomea</i>					

FOUR SEASON INTEREST



SUNLIGHT	HEIGHT	MOISTURE	SOIL TYPE	COMMON ECOSYSTEM	ATTRACTIONS	DROUGHT TOLERANCE	SPACING
	1'-2½'		LOAM	WOODLAND			1'-1½'
	2'-3'		SANDY, ROCKY, ACIDIC	WOODLAND			1'-1½'
	1'-1½'		LOAM	WOODLAND			1-1½'
	1'-3'		LOAM	WOODLAND OPENING			¾-1½'
	3'-4'		ROCKY, LOAM	WOODLAND OPENING			3-4'
	2½'-3'		LOAM, CLAY-LOAM	WOODLAND OPENING			1½'-3'
	2'-4'		LOAM, CLAY	WOODLAND BORDER			2'-3'
	1'-2'		LOAM	WOODLAND			1'-2'
	2½'-5'		LOAM	WOODLAND			1-1½'
	1'-3'		LOAM	WOODLAND			1-2½'
	2'-4'		SANDY, ACIDIC	LOW WOODLAND			2'-3'