

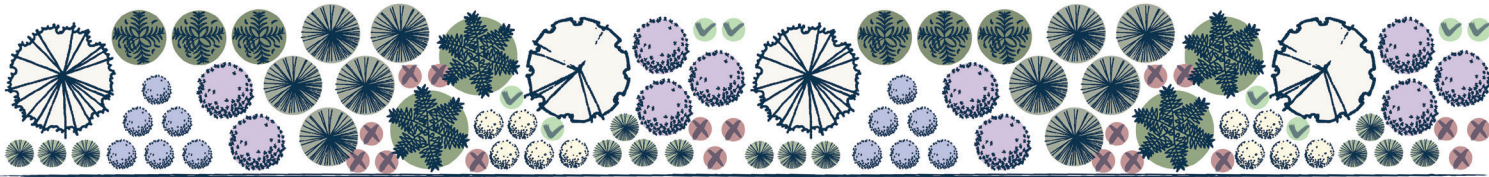
WOODLAND GARDEN

It’s no secret that grass can be difficult to grow in shaded areas of the yard. Luckily, Illinois is home to dozens of plant species adapted for exactly this situation. Instead of a traditional lawn, homeowners can mix shade-loving groundcovers, like sedges and ferns, with taller, blooming plants and spring ephemerals that flourish.

This guide features a planting plan focused on natives typically found in Illinois woodlands. The plan creates year-round interest for homeowners and extends the foraging season for pollinators. Additionally, the trees and native plants help reduce stormwater runoff. Keep in mind that while only native plants are used in this example, non-natives can also benefit pollinators. For more information, visit the University of Illinois Extension Horticulture website.

ADDITIONAL PLANTING OPTIONS

If you have more space, you can take the basic planting plan and repeat it, as such.



If you have less space, below are groupings that are suitable for smaller beds.



JACOB'S LADDER

☀️ 🌧️ 🌑

💧 💧 💧



GOAT'S BEARD

☀️ 🌧️ 🌑

💧 💧 💧



CINNAMON FERN

☀️ 🌧️ 🌑

💧 💧 💧



TUFTED HAIRGRASS

☀️ 🌧️ 🌑

💧 💧 💧



POKE MILKWEED

☀️ 🌧️ 🌑

💧 💧 💧



SMOOTH BLUE ASTER

☀️ 🌧️ 🌑

💧 💧 💧

WHERE TO FIND PLANTS AND MORE INFORMATION

The plant palette is inspired by the Red Oak Rain Garden: www.redoakraingarden.org. The Illinois Native Plant Society webpage lists sources of native plants. For more information about plants, see the University of Illinois Extension Horticulture website.

PUT YOUR NATIVE PLANT GARDEN ON THE MAP

You can be part of a network of native plantings by registering your Illinois native plant garden or rain garden. This helps build community and encourage native plant use.

Add your native plant garden to the map: <http://go.illinois.edu/GardenMap>

ACKNOWLEDGMENTS

Funding provided by Illinois Environmental Protection Agency and Illinois-Indiana Sea Grant.
Produced by C. Eliana Brown, University of Illinois Extension.
Researched and designed by Layne Knoche with contributions from Kate Gardiner, University of Illinois Extension.
Edited by Irene Miles and Joel Davenport, Illinois-Indiana Sea Grant.



WOODLAND GARDEN

NATIVE ILLINOIS PLANTS FOR SHADED GARDENS

PLANTING PLAN

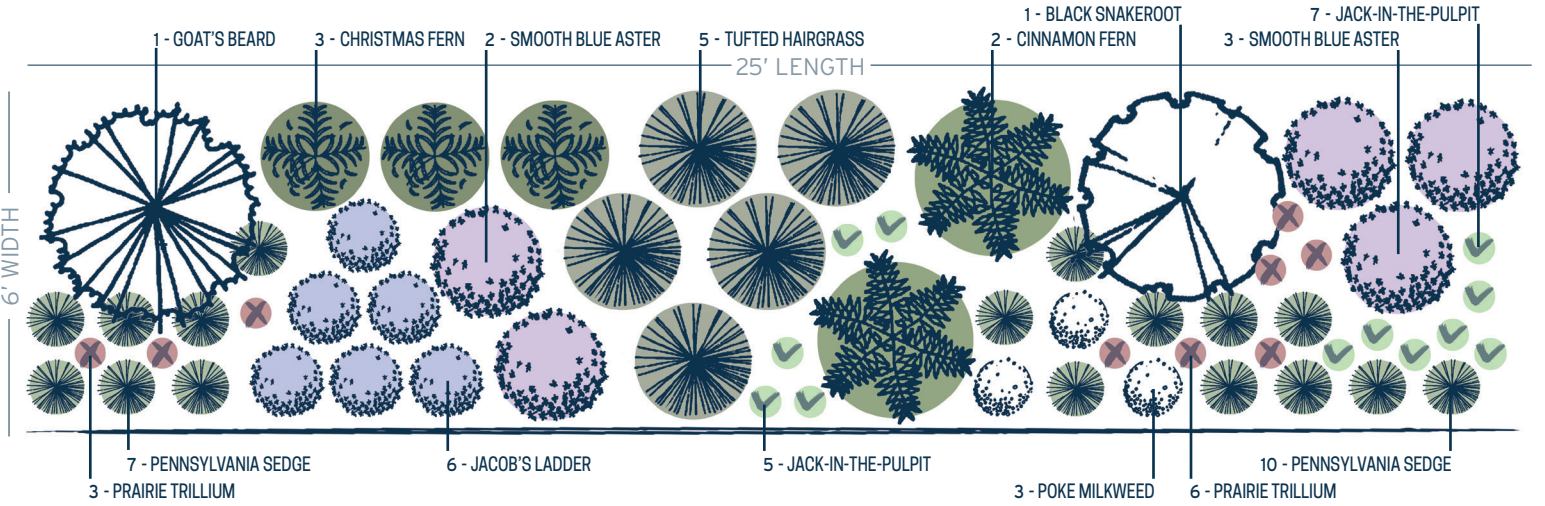
Category Common Name (Total quantity in design)

GROUNDCOVER: Pennsylvania Sedge (17), Jacob's Ladder (6), Tufted Hairgrass (5), Christmas Fern (3)

SEASONAL: Prairie Trillium (9), Jack-in-the-Pulpit (12), Poke Milkweed (3), Smooth Blue Aster (5)

STRUCTURAL: Goat's Beard (1), Black Snakeroot (1), Cinnamon Fern (2)

See the Red Oak Rain Garden Brochure for information related to the Groundcover, Seasonal, and Structural categories.



FORBS ORGANIZED BY HEIGHT				SPRING	SUMMER	FALL	WINTER
JACK-IN-THE-PULPIT <i>Arisaema triphyllum</i>							
PRAIRIE TRILLIUM <i>Trillium recurvatum</i>							
JACOB'S LADDER <i>Polemonium reptans</i>							
GOAT'S BEARD <i>Aruncus dioicus</i>							
BLACK SNAKEROOT <i>Actaea racemosa</i>							
POKE MILKWEED <i>Asclepias exaltata</i>							
SMOOTH BLUE ASTER <i>Symphyotrichum laeve</i>							
OTHERS ORGANIZED BY HEIGHT							
PENNSYLVANIA SEDGE <i>Carex pensylvanica</i>							
CHRISTMAS FERN <i>Polystichum acrostichoides</i>							
TUFTED HAIRGRASS <i>Deschampsia caespitosa</i>							
CINNAMON FERN <i>Osmunda cinnamomea</i>							

FOUR SEASON INTEREST

SPRING

- JACK-IN-THE-PULPIT
Arisaema triphyllum
- PRAIRIE TRILLIUM
Trillium recurvatum
- JACOB'S LADDER
Polemonium reptans
- GOAT'S BEARD
Aruncus dioicus

SUMMER

- JACOB'S LADDER
Polemonium reptans
- GOAT'S BEARD
Aruncus dioicus
- BLACK SNAKEROOT
Actaea racemosa
- POKE MILKWEED
Asclepias exaltata
- TUFTED HAIRGRASS
Deschampsia caespitosa
- PENNSYLVANIA SEDGE
Carex pensylvanica
- CINNAMON FERN
Osmunda cinnamomea

FALL

- GOAT'S BEARD
Aruncus dioicus
- SHORT'S ASTER
Symphyotrichum shortii
- TUFTED HAIRGRASS
Deschampsia caespitosa
- CINNAMON FERN
Osmunda cinnamomea

WINTER

- GOAT'S BEARD
Aruncus dioicus
- TUFTED HAIRGRASS
Deschampsia caespitosa
- CHRISTMAS FERN
Polystichum acrostichoides
- PENNSYLVANIA SEDGE
Carex pensylvanica

SUNLIGHT	HEIGHT	MOISTURE	SOIL TYPE	COMMON ECOSYSTEM	ATTRACTIONS	DROUGHT TOLERANCE	SPACING
	1'-2'		LOAM	WOODLAND			1'-1½'
	1-1½'		LOAM	WOODLAND			¾'-1'
	1'-3'		LOAM	WOODLAND			1'-1½'
	4'-6'		LOAM	WET WOODLAND			2'-4'
	3'-7'		LOAM	WOODLAND			2'-4'
	2'-6'		LOAM	WOODLAND OPENING			1'-2'
	2'-4'		LOAM, CLAY	WOODLAND BORDER			2'-3'
	½'-1'		SANDY LOAM	WOODLAND			1'-2'
	1½'-2½'		LOAM, ROCKY	WOODLAND			1'-2'
	2'-3'		LOAM	WOODLAND			1'-2'
	2'-4'		SANDY, ACIDIC	LOW WOODLAND			2'-3'